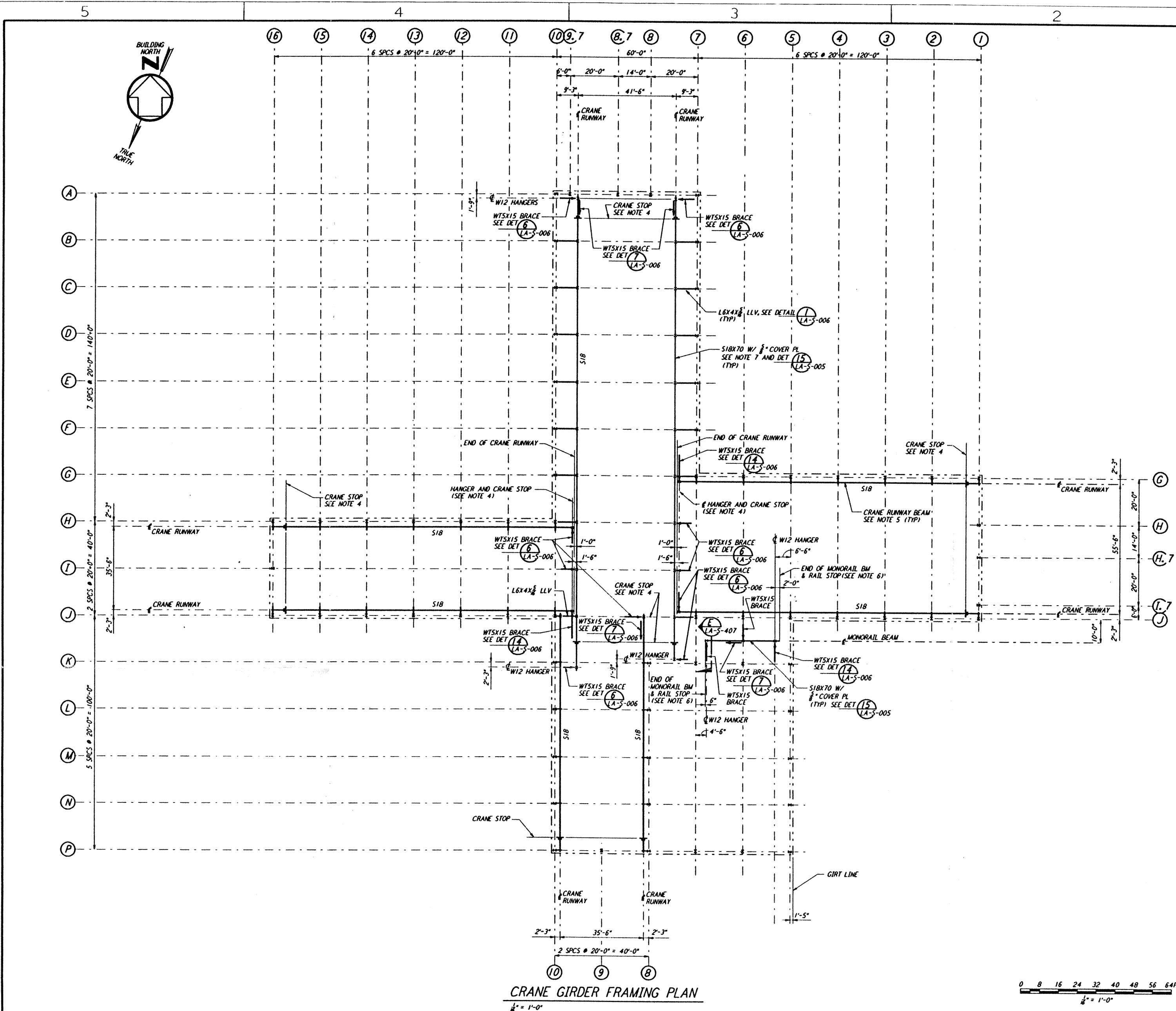


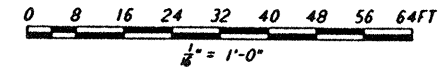
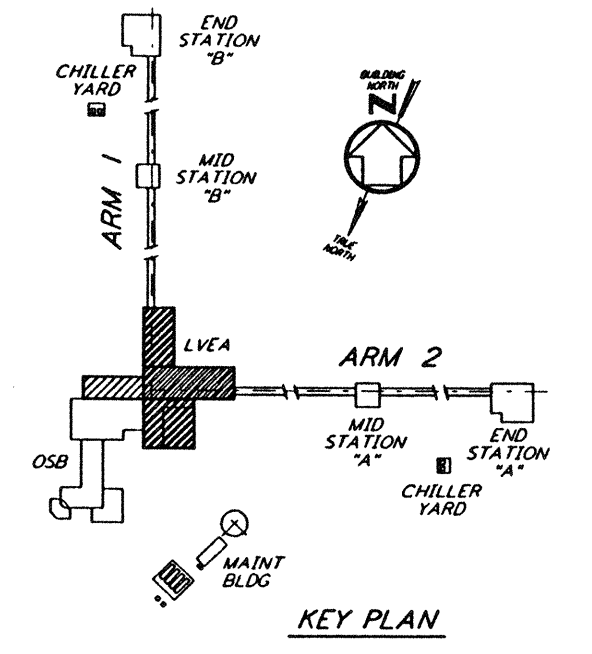
Mon Jul 22 17:26:29 1996 S3-V18B2 J:\PLOTS\QUEUES\18B2\ST106.PRF

This document and the design it covers are the property of PARSONS. They are loaned only with the borrower's expressed written agreement that they will not be reproduced, copied, loaned, exhibited, or used in any other way, except by written consent from PARSONS to the borrower.



CRANE GIRDER FRAMING PLAN  
 1/4" = 1'-0"

- NOTES:**
- FABRICATOR SHALL STAGGER THE SPLICES IN CRANE RUNWAY GIRDERS.
  - DENOTES WTS BRACE AND POINTS TO LOW END.
  - FOR CRANE STOP, SEE DETAIL LA-S-005
  - ALL CRANE STOPS SHALL BE FIELD LOCATED TO ACHIEVE CRANE HOOK COVERAGE AS SPECIFIED IN THE SPECIFICATIONS SECTION 14630, BRIDGE CRANES.
  - CONTRACTOR HAS OPTION TO HAVE CRANE VENDOR SUPPLY CRANE RUNWAY BEAMS. THE CRANE RUNWAY BEAMS MAY BE PROPRIETARY SECTION ENGINEERED BY CRANE VENDOR.
  - CONTRACTOR SHALL VERIFY THE LENGTH OF MONORAIL REQUIRED TO CLEAR THE ROLLED-UP DOOR HOUSING.
  - ROLLING SURFACE OF CRANE RAILS SHALL BE POLISHED TO PROVIDE "FLAKE FREE" OPERATION.



NO.	DATE	BY	CHKD	ENGR	PROJ	DESCRIPTION
C	7-24-96	MCS	BDW	BP	TDW	ISSUED FOR BID
B	6-14-96	MCS	DDM	BP	TDW	FINAL DESIGN REVIEW
A	10-31-95				TDW	PRELIMINARY DESIGN REVIEW

DRAWN	MCS
CHECKED	
ENGINEER	
PROJ	

**PARSONS**  
 100 WEST WALNUT STREET  
 PASADENA, CALIFORNIA

**LIGO**  
 CALIFORNIA INSTITUTE OF TECHNOLOGY  
 MASSACHUSETTS INSTITUTE OF TECHNOLOGY

LASER INTERFEROMETER  
 GRAVITATIONAL-WAVE OBSERVATORY  
 SITE NO. 2 - LIVINGSTON, LOUISIANA

STRUCTURAL  
 CORNER STATION  
 LVEA CRANE SUPPORT  
 FRAMING PLAN

AS NOTED PP150969 8094  
**LA-S-106**