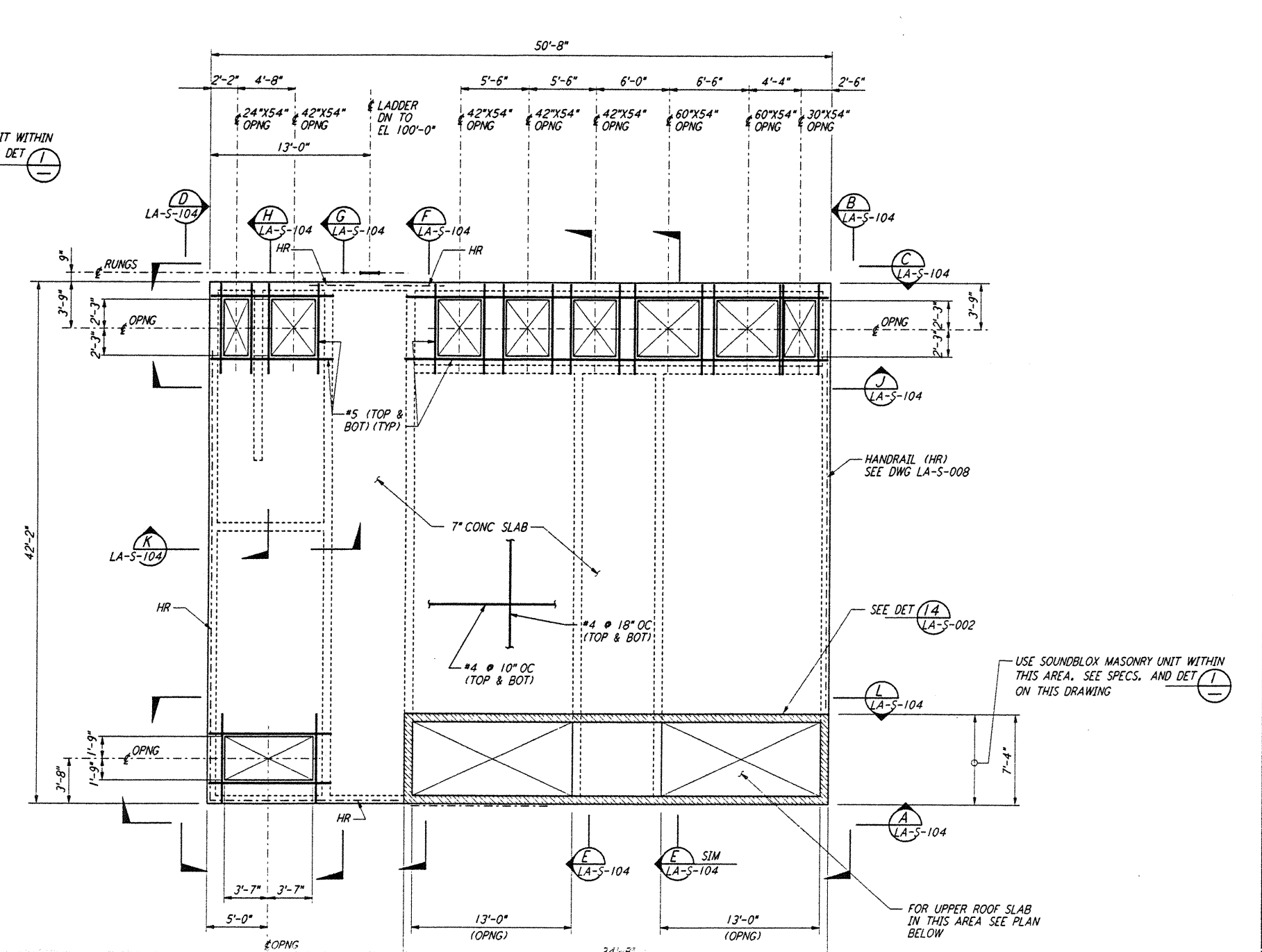
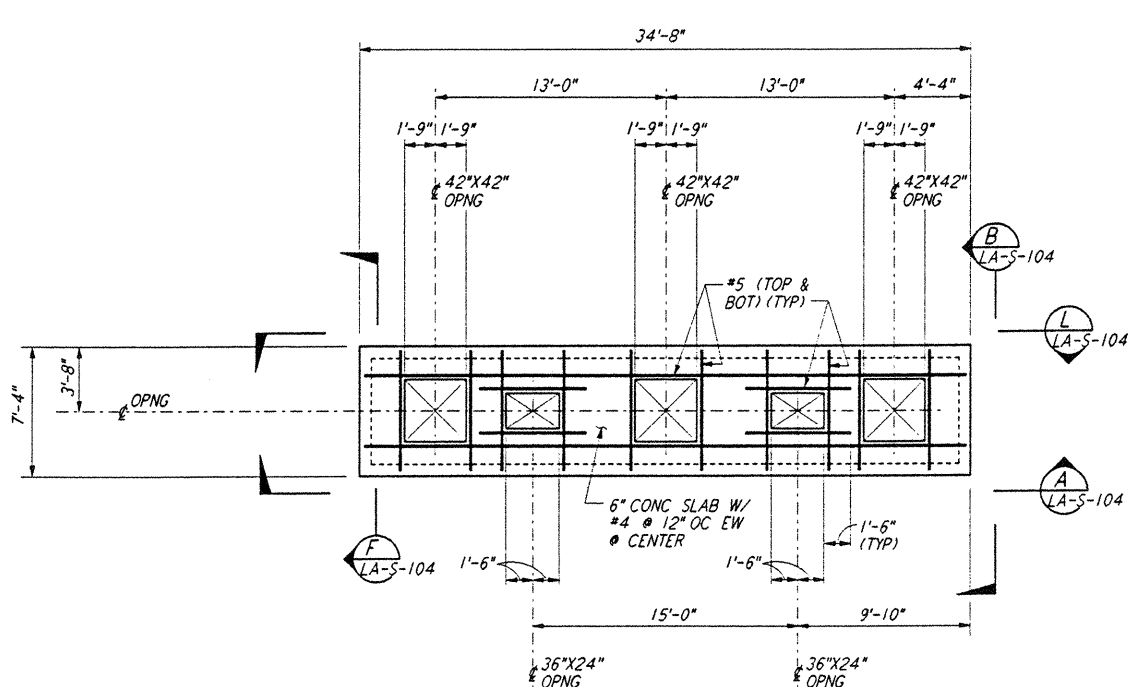


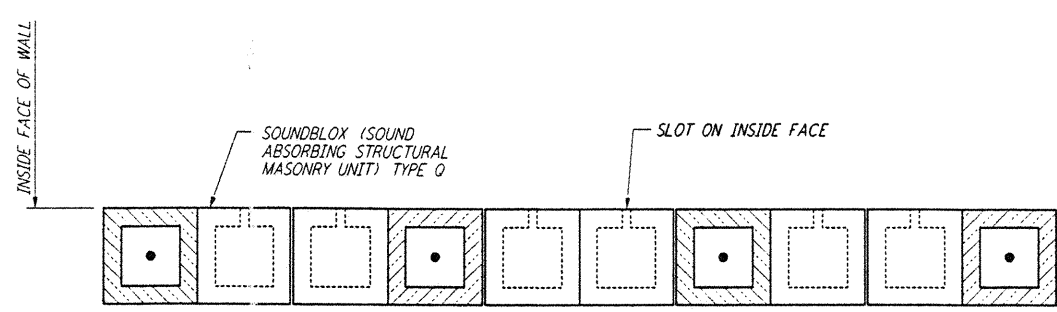
**AIR HANDLING UNIT STRUCTURE  
 FOUNDATION PLAN**  
 $\frac{1}{8}'' = 1'-0''$



**AIR HANDLING UNIT STRUCTURE  
 LOWER CONCRETE ROOF SLAB PLAN**  
 $\frac{1}{8}'' = 1'-0''$   
 TOC EL 110'-7"

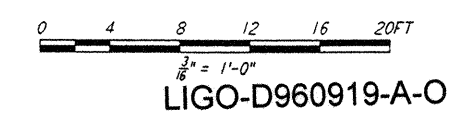


**AIR HANDLING UNIT STRUCTURE  
 UPPER CONCRETE ROOF SLAB PLAN**  
 $\frac{1}{8}'' = 1'-0''$   
 TOC EL 115'-2"



**TYPICAL SECTION OF SOUNDBLOX MASONRY WALL**  
 DETAIL 1  
 $\frac{1}{2}'' = 1'-0''$

- NOTES:**
1. FOR GENERAL NOTES, ABBREVIATIONS & SYMBOLS SEE DRAWING LA-S-001.
  2. CONTRACTOR SHALL ADJUST LOCATION AND SIZE OF ALL EQUIPMENT PADS TO SUIT ACTUAL VENDOR EQUIPMENTS.



not be reproduced, copied, loaned, exhibited, or used in any other way, except by written consent from PARSONS to the borrower.

This document and the design it covers are the property of PARSONS. They are loaned only with the borrower's expressed written agreement that they will

NO.	DATE	BY	CHKD	ENGR	PROJ	DESCRIPTION
A	6-14-96	MCS	DM	DM	DM	FINAL DESIGN REVIEW

DRAWN	MCS
CHECKED	
ENGINEER	
PROJ	

**PARSONS**

100 WEST WALNUT STREET  
 PASADENA, CALIFORNIA

**LIGO**

CALIFORNIA INSTITUTE OF TECHNOLOGY  
 MASSACHUSETTS INSTITUTE OF TECHNOLOGY

LASER INTERFEROMETER  
 GRAVITATIONAL-WAVE OBSERVATORY  
 SITE NO. 2 - LIVINGSTON, LOUISIANA

STRUCTURAL  
 CORNER STATION  
 AIR HANDLING UNIT  
 ENCLOSURE PLAN

AS NOTED PPI 50969 8094

**LA-S-103**

JUN 13 1996 11:16:53 AM 31.4 MB 31.4 MB 31.4 MB

JUN 13 1996 11:16:53 AM 31.4 MB 31.4 MB 31.4 MB