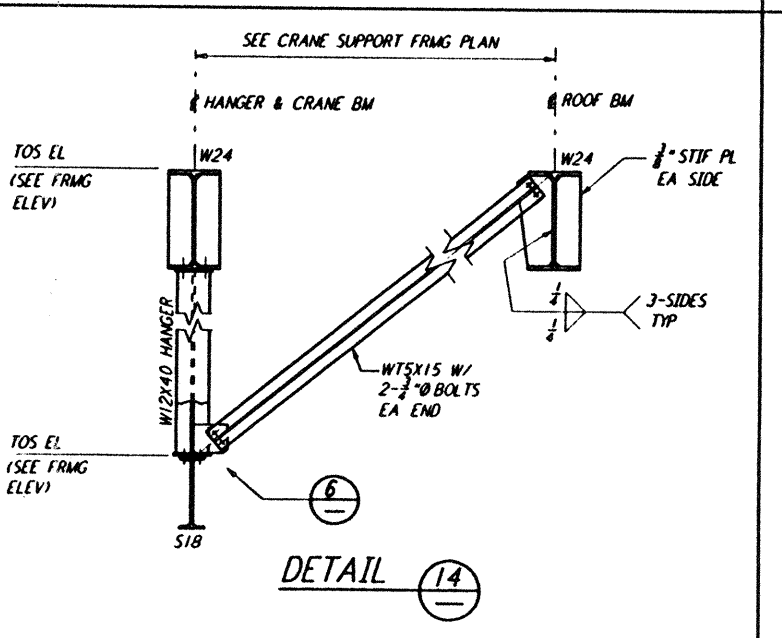
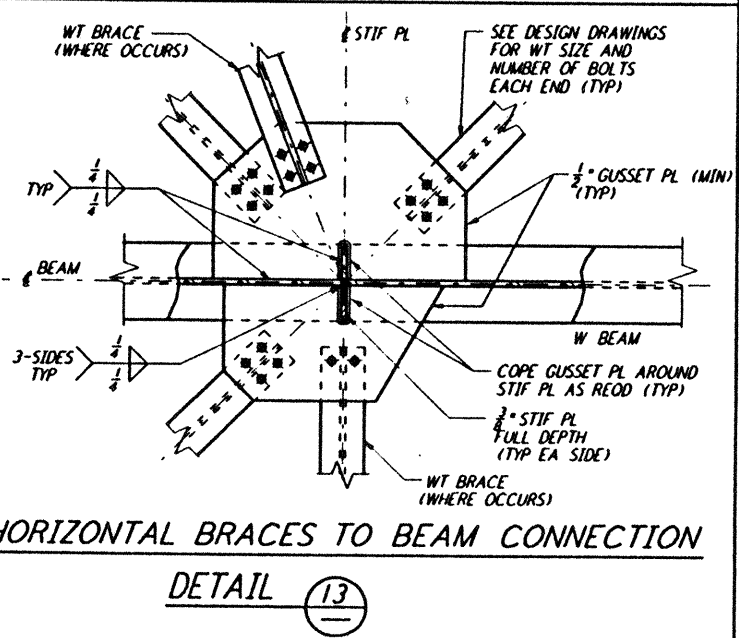
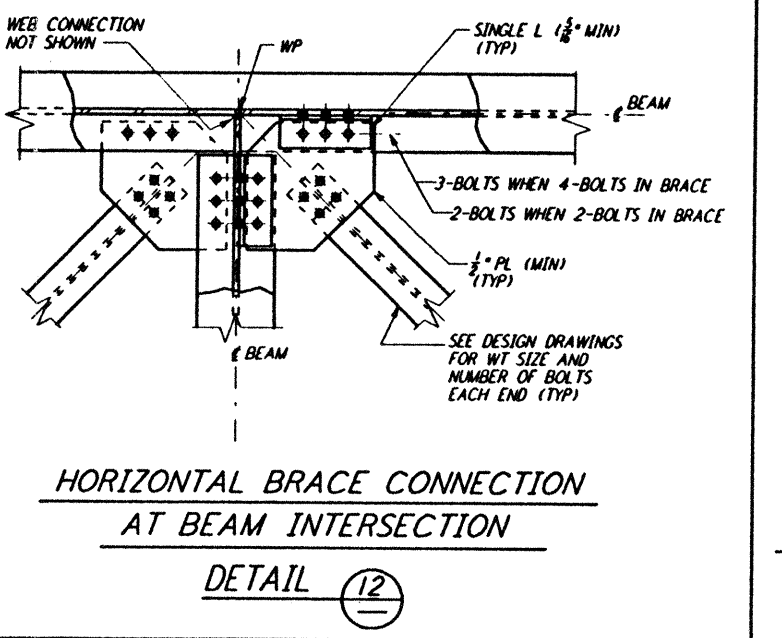
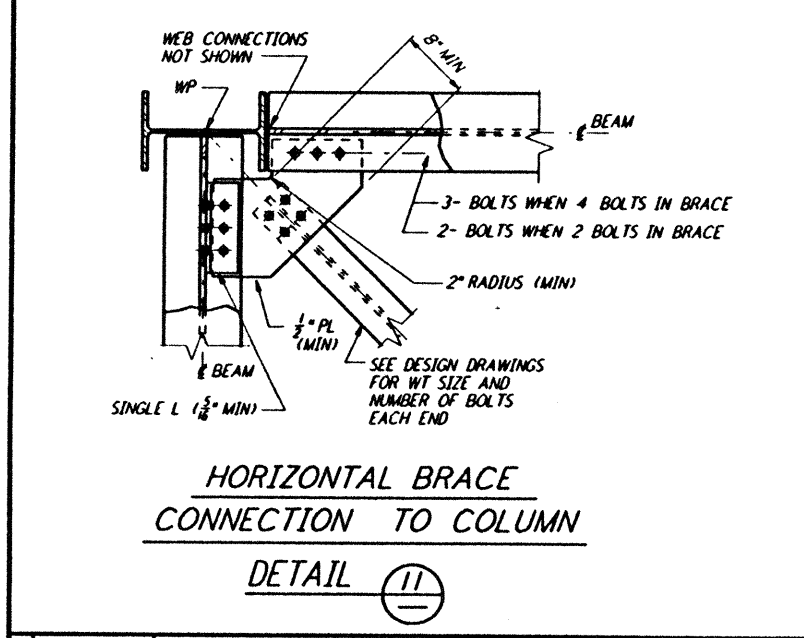
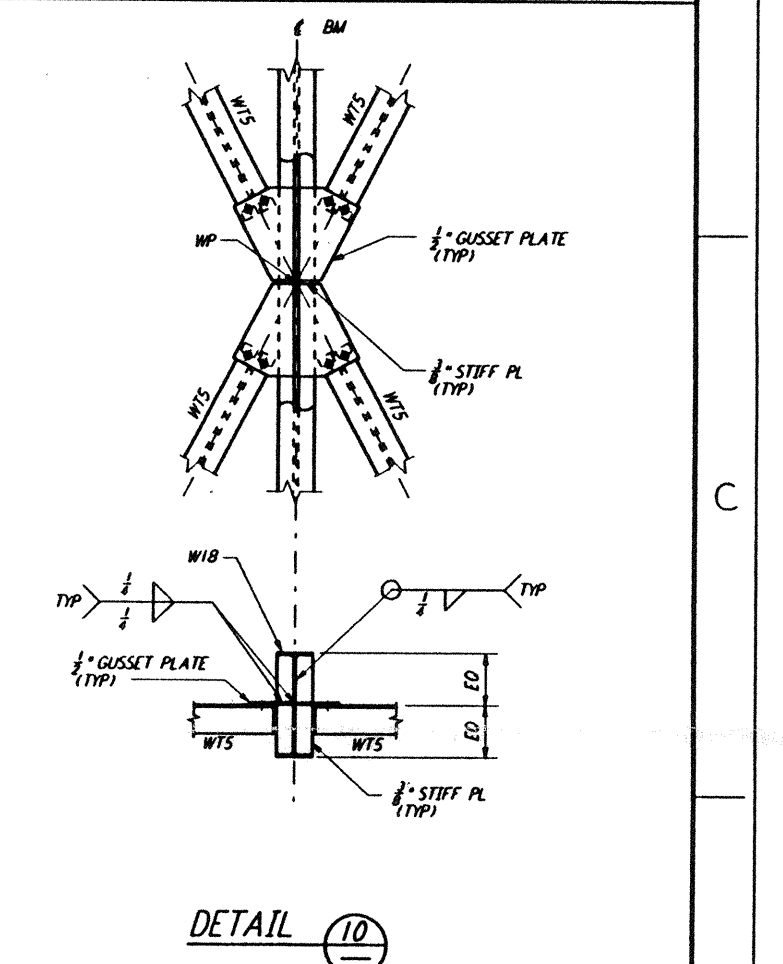
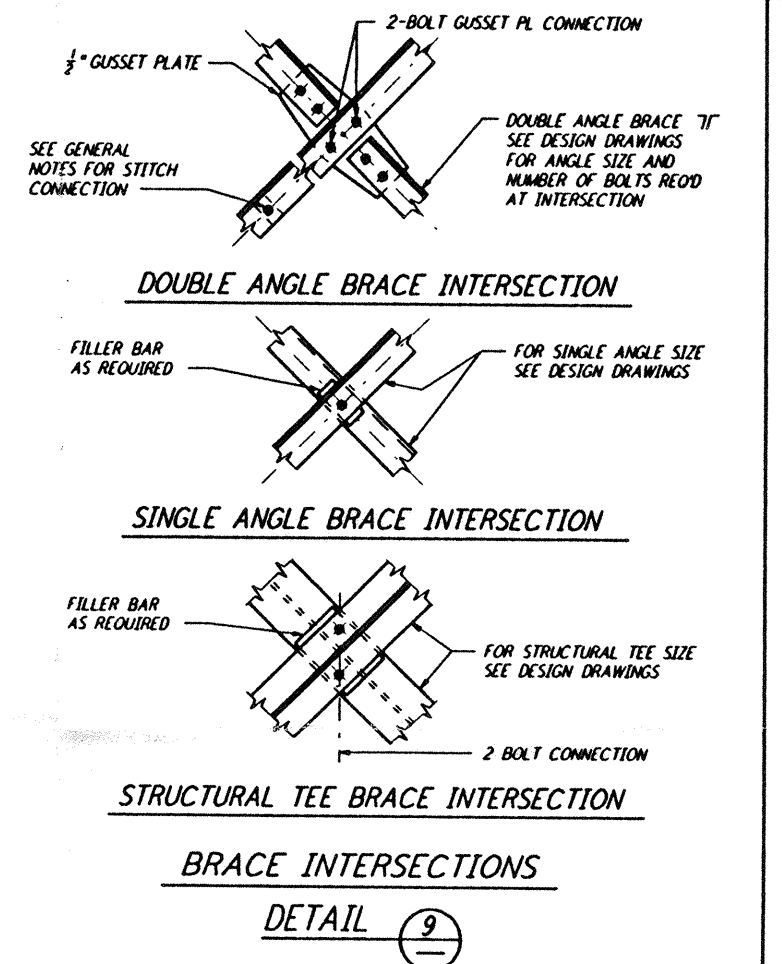
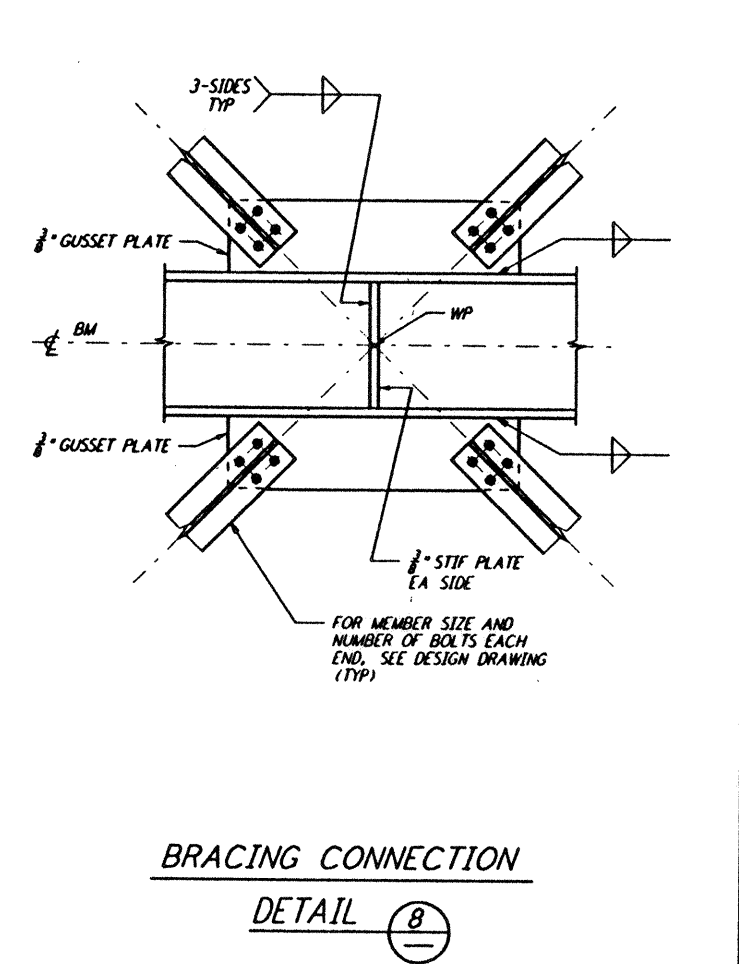
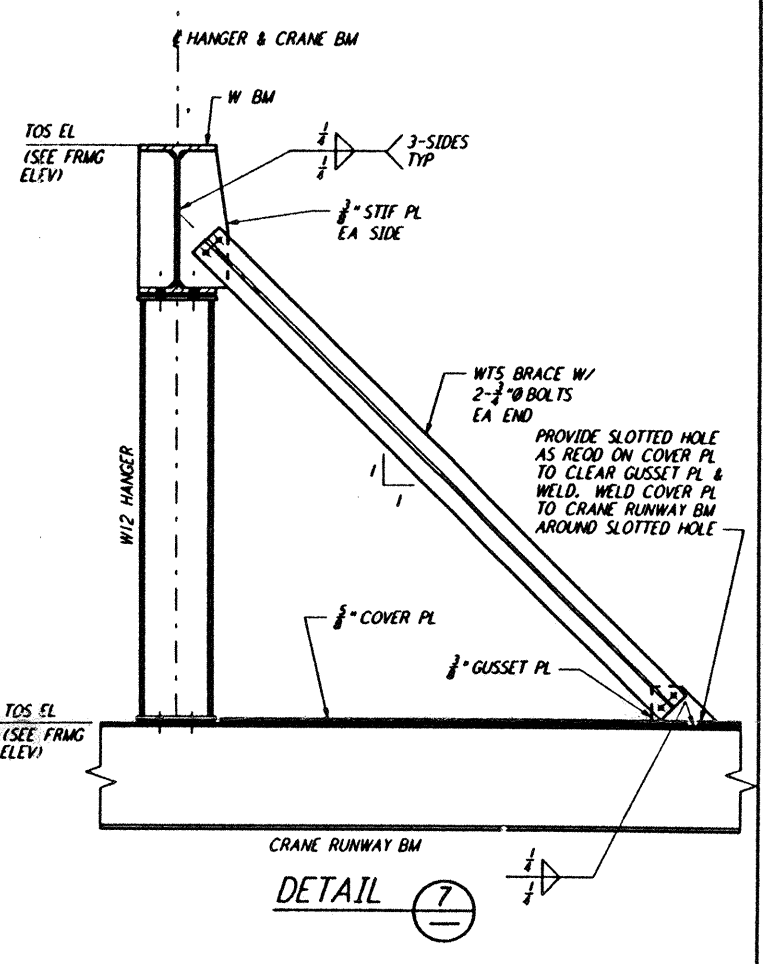
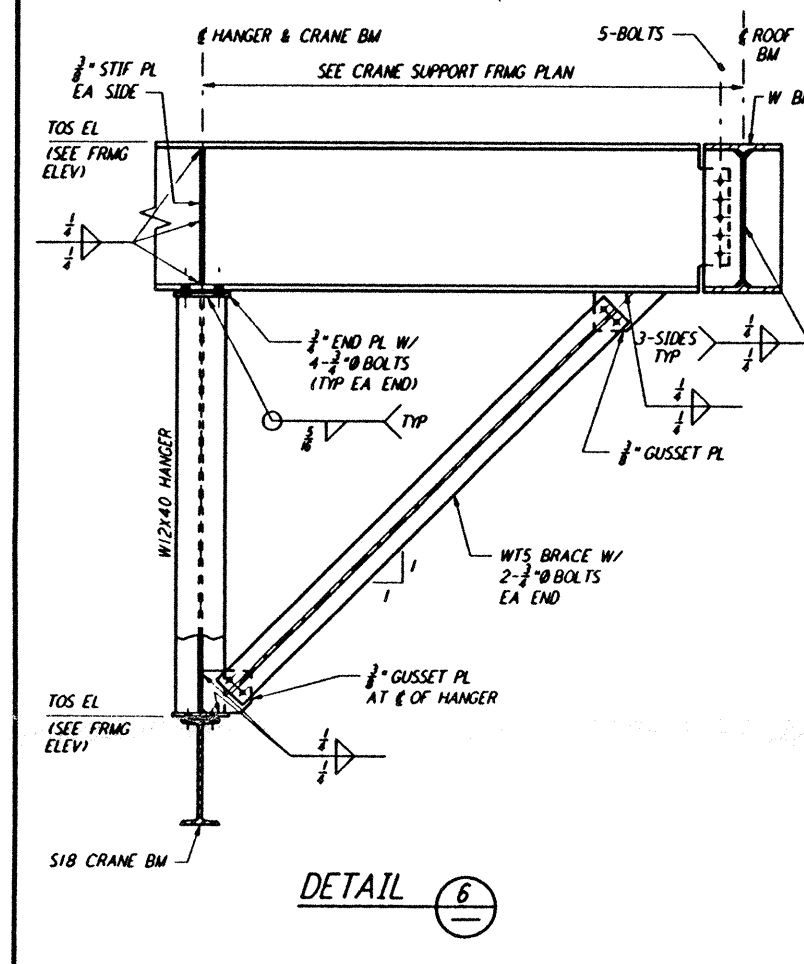
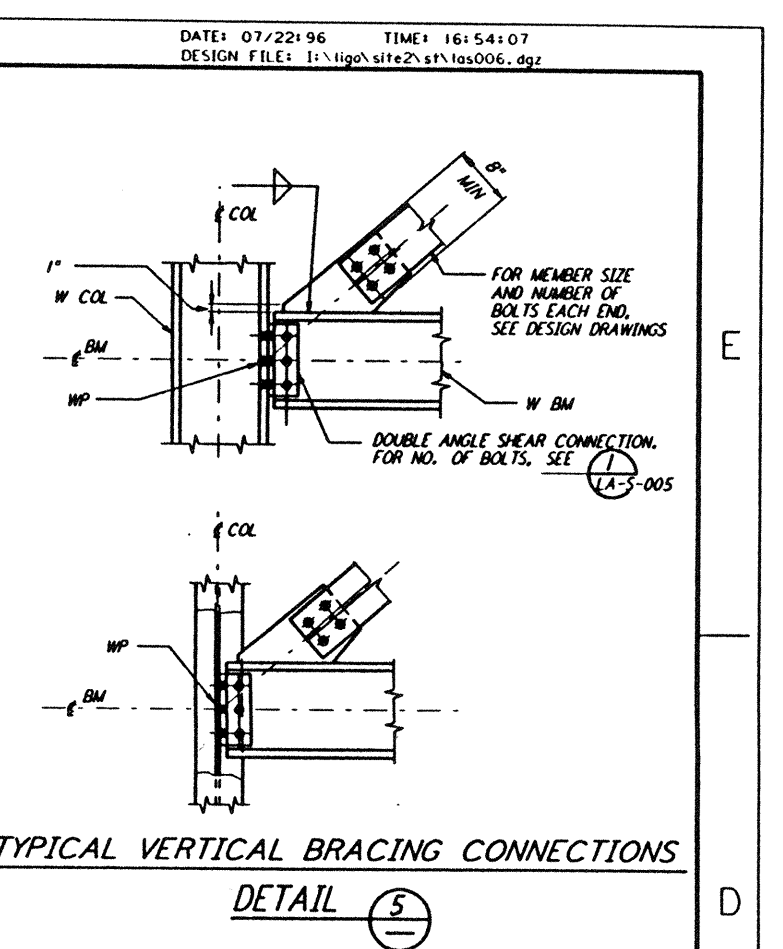
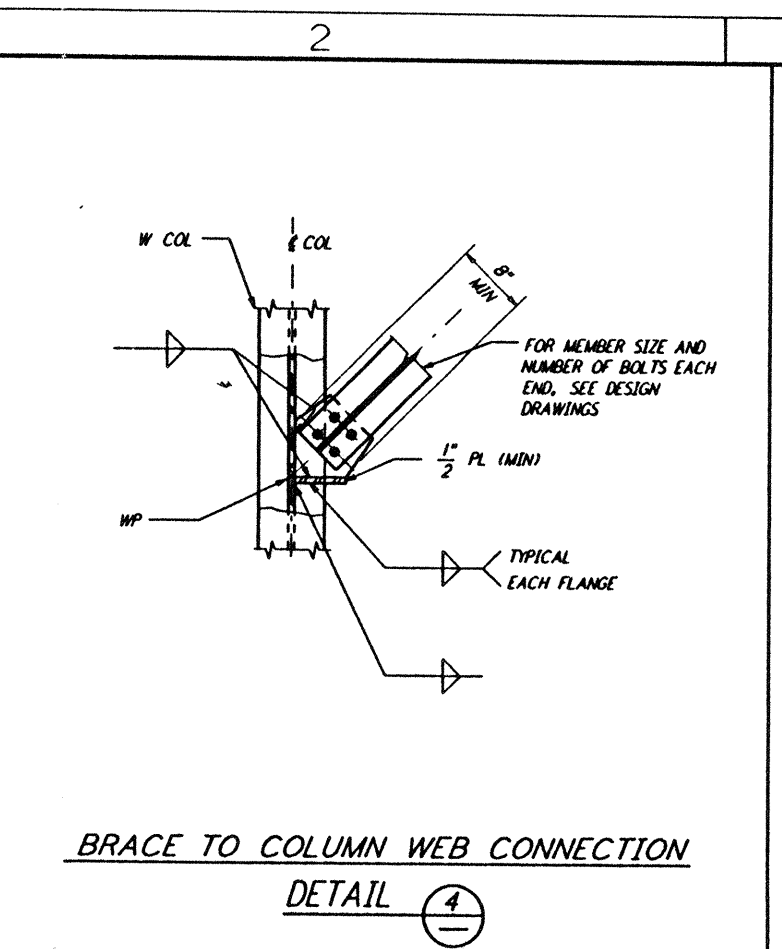
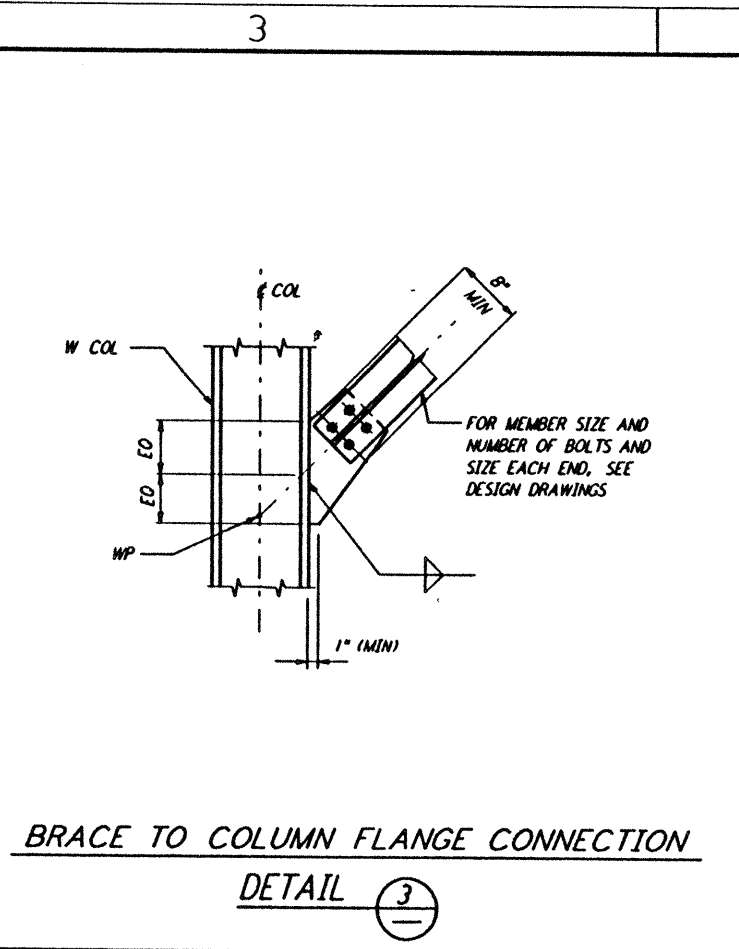
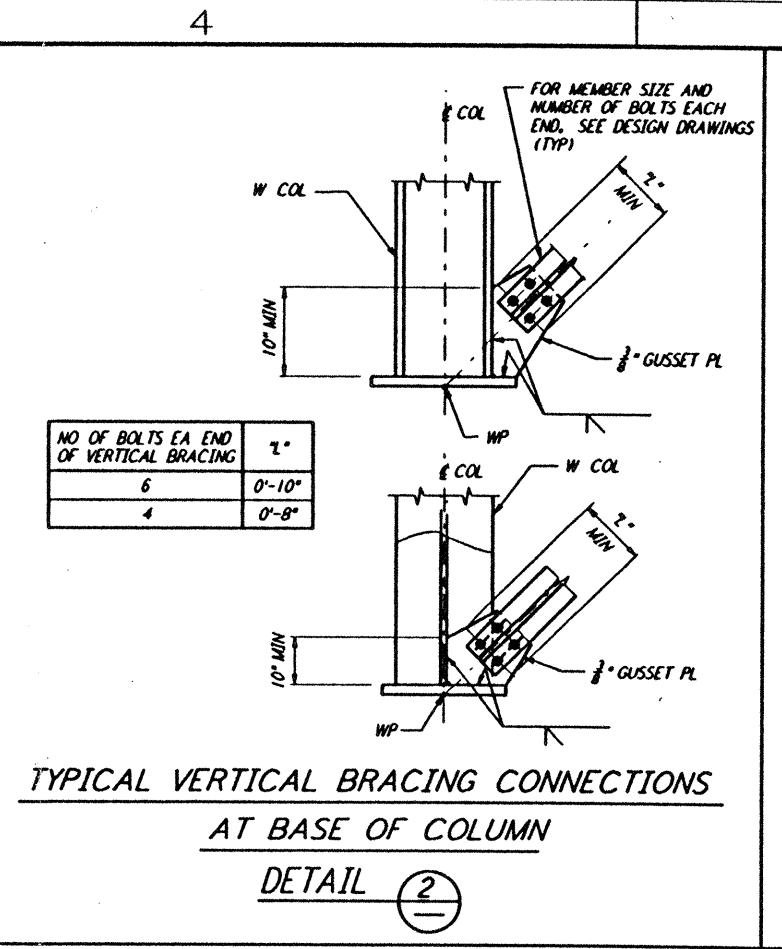
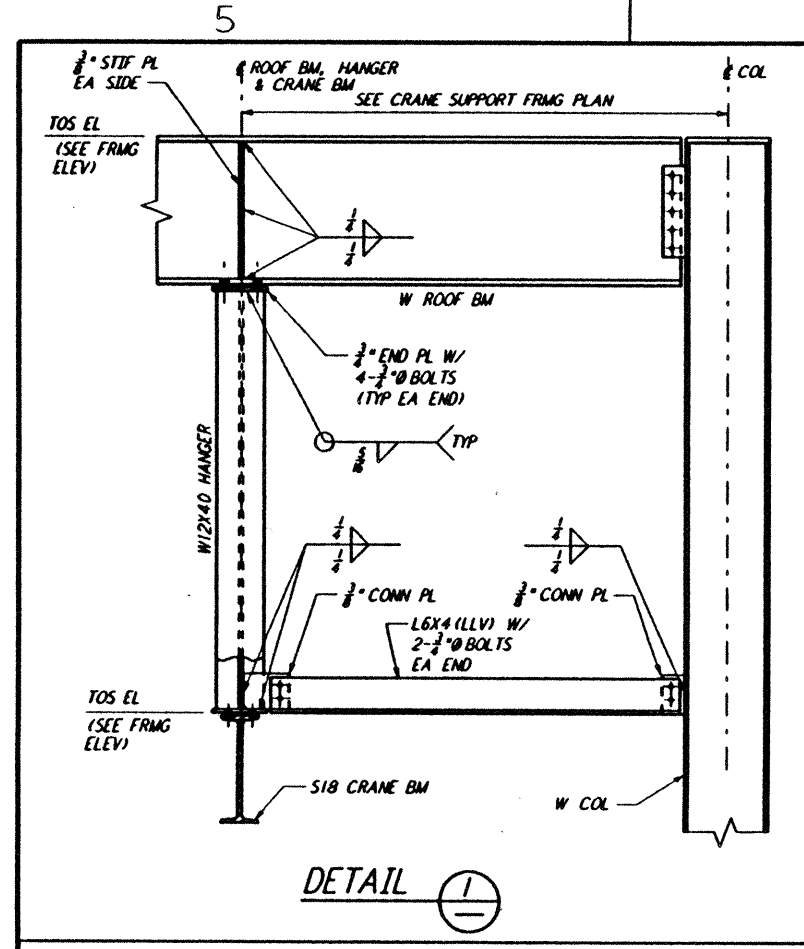


Mon Jul 22 16:53:15 1996 53-V18B2 J:\PLOTS\QUEUES\18B2\ST006.PRF

This document and the design it covers are the property of PARSONS. They are loaned only with the borrower's expressed written agreement that they will not be reproduced, copied, loaned, exhibited, or used in any other way, except by written consent from PARSONS to the borrower.

DATE: 07/22/96 TIME: 16:54:07
 DESIGN FILE: J:\lgo\site2\stn\lso06.dgz



NOTES:
 1. FOR GENERAL NOTES, ABBREVIATIONS AND SYMBOLS SEE DRAWING LA-S-001.
 2. ALL ANGLE VERTICAL BRACING END CONNECTIONS SHALL HAVE TWO BOLTS EACH END UNLESS NOTED OTHERWISE ON THE DESIGN DRAWINGS.

NO.	DATE	BY	CHKD	ENGR	PROJ	DESCRIPTION
C	7-24-96	MCS	BP	BP	TMO	ISSUED FOR BID
B	6-14-96	MCS	DOM	BP	TOM	FINAL DESIGN REVIEW
A	10-31-95				TDM	PRELIMINARY DESIGN REVIEW

DRAWN	MCS
CHECKED	
ENGINEER	
PROJ	

PARSONS
 100 WEST WALNUT STREET
 PASADENA, CALIFORNIA

LIGO
 CALIFORNIA INSTITUTE OF TECHNOLOGY
 MASSACHUSETTS INSTITUTE OF TECHNOLOGY

LASER INTERFEROMETER
 GRAVITATIONAL-WAVE OBSERVATORY
 SITE NO. 2 - LIVINGSTON, LOUISIANA

TITLE	SCALE	PROJECT NUMBER	PROJECT NUMBER
STRUCTURAL STANDARD	NONE	PP150969	8094
STRUCTURAL STEEL CONNECTION DETAILS SHEET 3			

LA-S-006