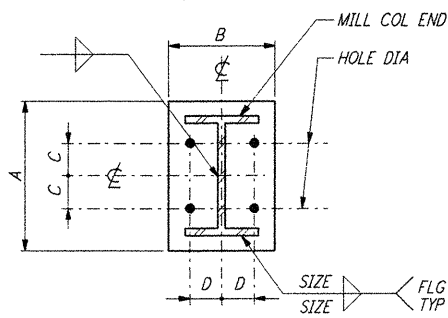


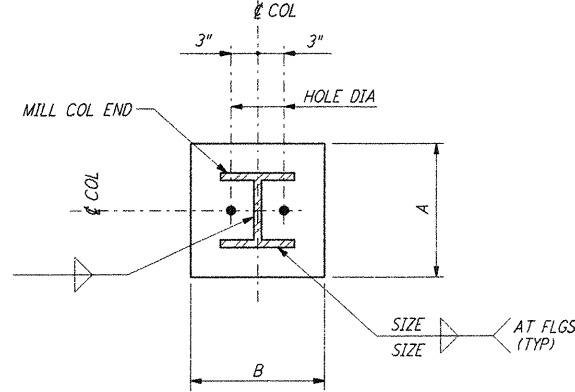
5



| BASE PLATE SCHEDULE | | | | | | |
|---------------------|-------|--------|--------|--------|----------|-----------|
| MEMBER SIZE | A | B | C | D | PL THICK | SIZE WELD |
| WB | 1'-0" | 0'-11" | 2 1/2" | 2 1/2" | 1" | 5/8" |
| W10 | 1'-0" | 0'-11" | 3" | 3" | 1" | 5/8" |
| W12 | 1'-2" | 0'-11" | 3 1/2" | 3 1/2" | 1 1/2" | 5/8" |
| W14 | 1'-4" | 1'-4" | 3 1/2" | 3 1/2" | 1 1/2" | 5/8" |
| W16 | 1'-6" | 1'-4" | 3 1/2" | 3 1/2" | 1 1/2" | 5/8" |

BASE PLATE DETAILS (1)

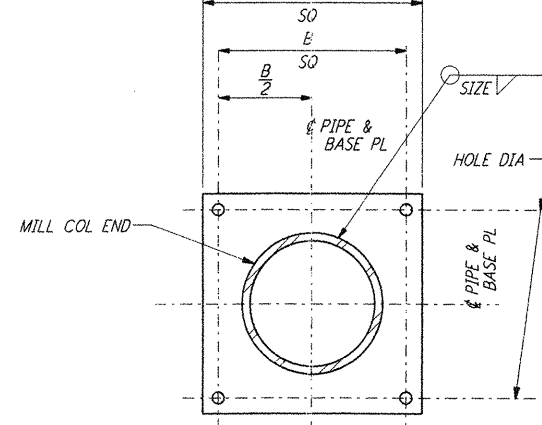
4



| BASE PLATE SCHEDULE | | | | |
|---------------------|--------|--------|----------|-----------|
| MEMBER SIZE | A | B | PL THICK | SIZE WELD |
| WB | 0'-10" | 0'-10" | 3/4" | 1/2" |
| W10 | 1'-0" | 0'-10" | 1" | 5/8" |
| W12 | 1'-2" | 0'-10" | 1" | 5/8" |
| W14 | 1'-4" | 0'-10" | 1 1/2" | 5/8" |
| W16 | 1'-6" | 0'-10" | 1 1/2" | 5/8" |

BASE PLATE DETAIL (2)

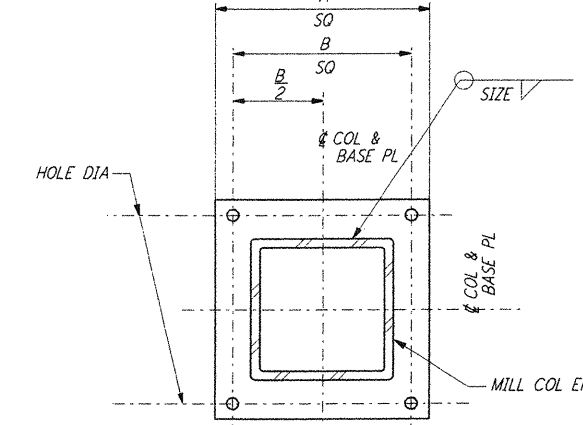
3



| BASE PLATE SCHEDULE | | | | |
|---------------------|-------|--------|----------|-----------|
| PIPE DIA | A | B | PL THICK | SIZE WELD |
| 3" | 1'-0" | 0'-6" | 3/4" | 1/2" |
| 4" | 1'-0" | 0'-8" | 1" | 1/2" |
| 5" | 1'-2" | 0'-10" | 1 1/2" | 1/2" |
| 6" | 1'-4" | 1'-0" | 1 1/2" | 5/8" |
| 8" | 1'-4" | 1'-0" | 1 1/2" | 5/8" |

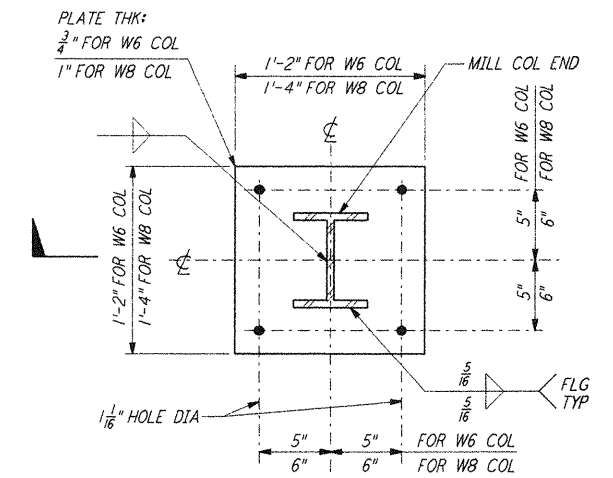
PIPE BASE PLATE DETAIL (3)

2



| BASE PLATE SCHEDULE | | | | |
|---------------------|-------|--------|----------|-----------|
| COL SIZE | A | B | PL THICK | SIZE WELD |
| TS4X4 | 1'-0" | 0'-8" | 1" | 5/8" |
| TS5X5 | 1'-2" | 0'-10" | 1 1/2" | 5/8" |
| TS6X6 | 1'-4" | 1'-0" | 1 1/2" | 5/8" |
| TS7X7 | 1'-6" | 1'-2" | 1 1/2" | 5/8" |
| TS8X8 | 1'-6" | 1'-2" | 1 1/2" | 5/8" |

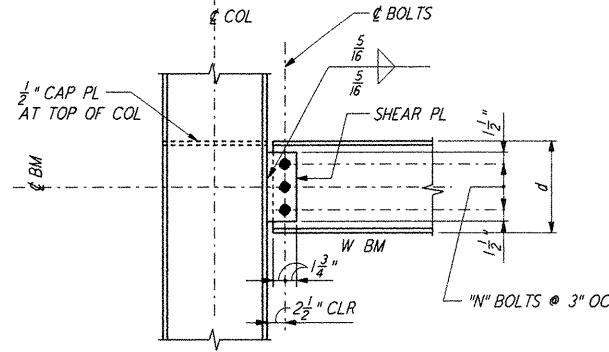
TS BASE PLATE DETAIL (4)



BASE PLATE DETAIL (5)

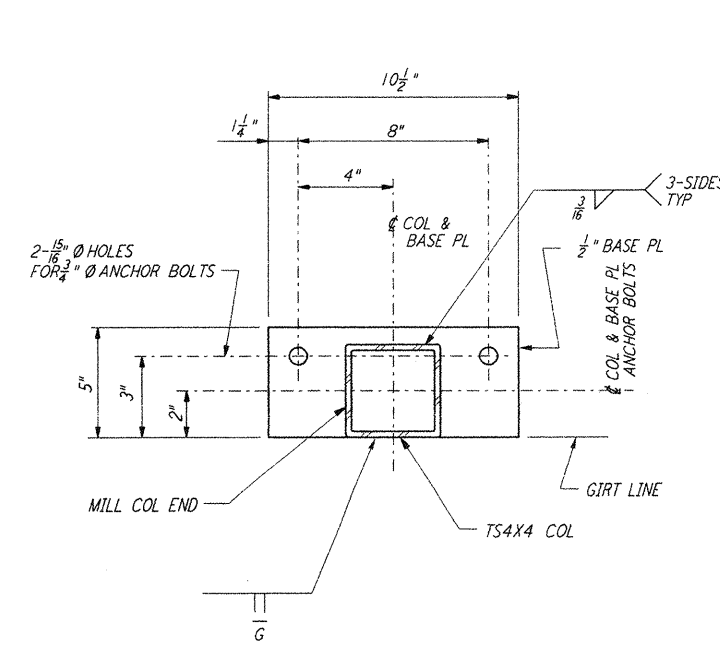
not be reproduced, copied, loaned, exhibited, or used in any other way, except by written consent from PARSONS to the borrower.

This document and the design it covers are the property of PARSONS. They are loaned only with the borrower's expressed written agreement that they will

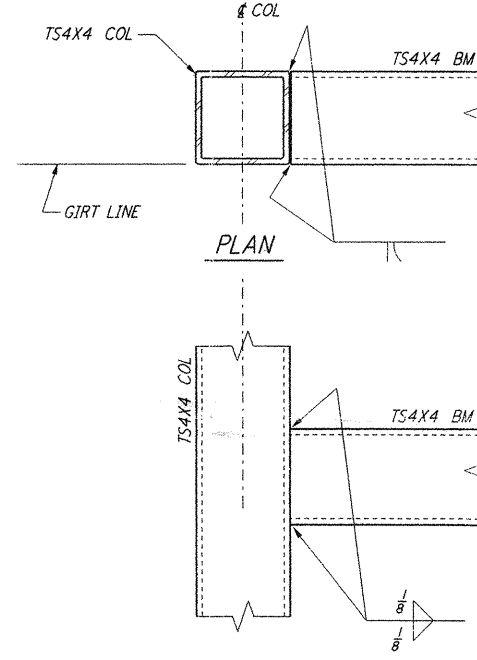


| SCHEDULE | |
|-----------------------|-----------------|
| BEAM DEPTH d (INCHES) | NO OF BOLTS "N" |
| 8, 10 | 2 |
| 12, 14 | 3 |
| 16, 18 | 4 |
| 21, 24, 27 | 5 |
| 30, 33, 36 | 6 |

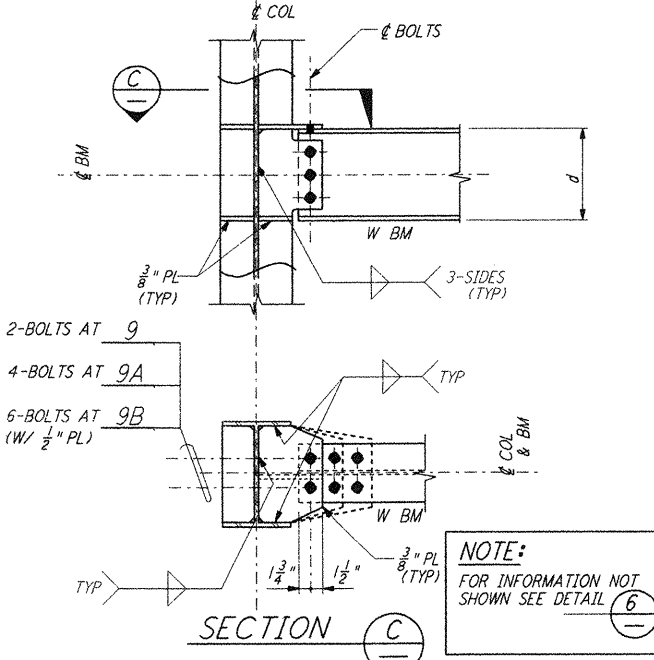
BEAM TO COLUMN CONNECTION DETAIL (6)



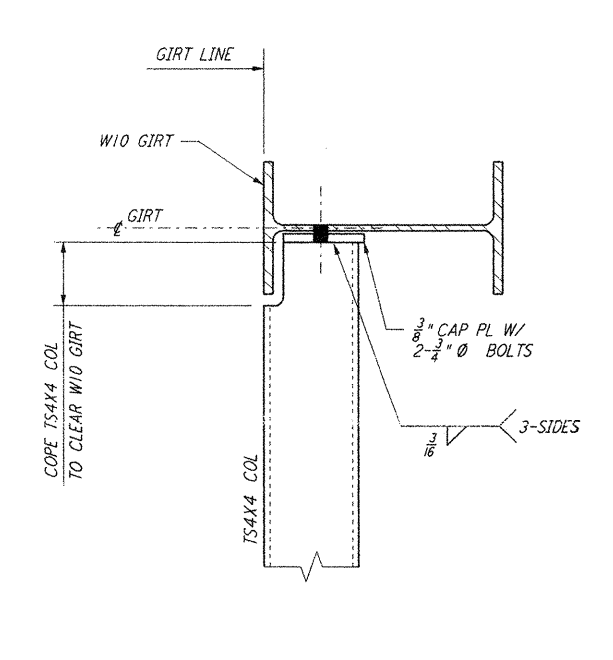
BASE PLATE DETAIL (7)



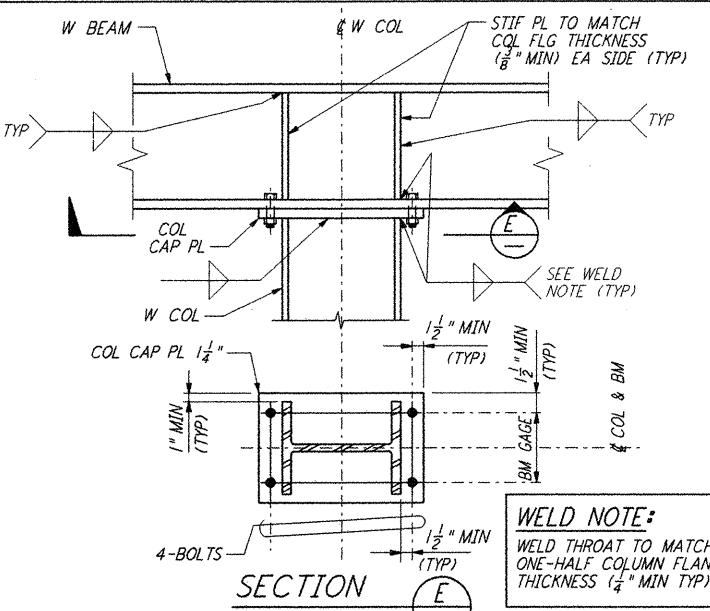
ELEVATION DETAIL (8)



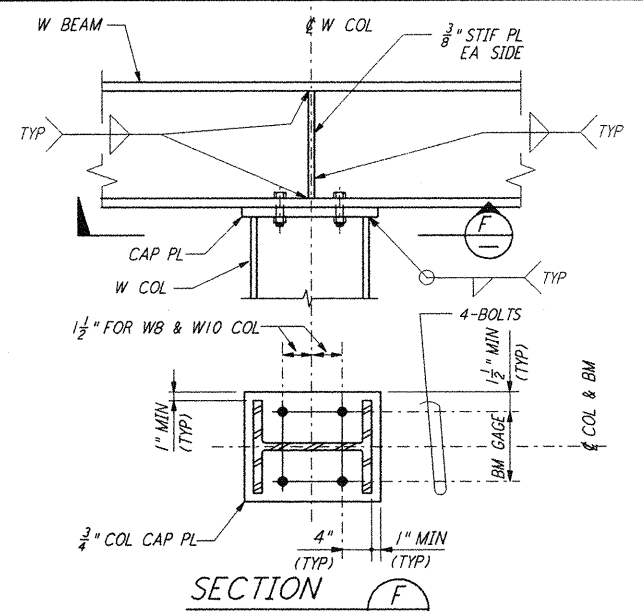
STRUT BEAM TO COLUMN CONNECTION DETAIL (9) (9A) (9B)



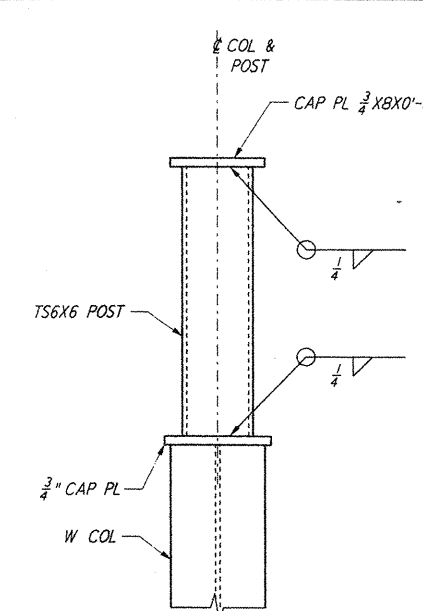
DETAIL (10)



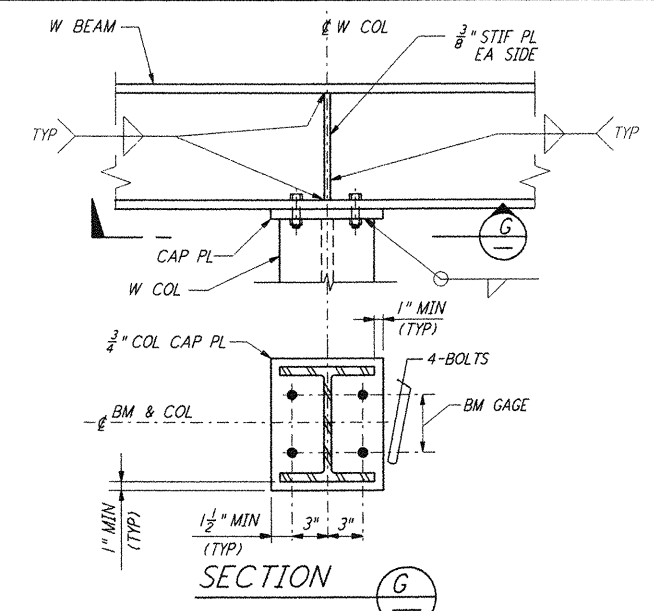
BEAM TO COLUMN BOLTED MOMENT CONNECTION DETAIL (11)



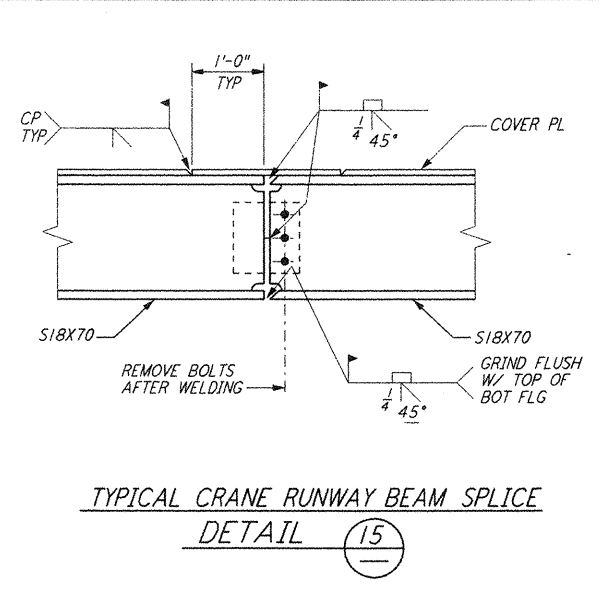
BEAM TO COLUMN BOLTED CONNECTION DETAIL (12)



ROOF PLATFORM SUPPORT DETAIL (13)



BEAM TO COLUMN BOLTED CONNECTION DETAIL (14)



TYPICAL CRANE RUNWAY BEAM SPLICE DETAIL (15)

NOTE:
 1. FOR GENERAL NOTES, ABBREVIATIONS AND SYMBOLS SEE DRAWING S-001.

| NO. | DATE | BY | CHKD | ENGR | PROJ | DESCRIPTION |
|-----|----------|----|------|------|------|---------------------|
| 1 | 08-07-98 | WA | BP | BP | WLU | ISSUED FOR AS-BUILT |

| ISSUED FOR CONSTRUCTION | | |
|-------------------------|-----|----------|
| DRAWN | MCS | 11-15-96 |
| CHECKED | DDM | 11-15-96 |
| ENGINEER | BP | 11-15-96 |
| PROJ | TDM | 11-15-96 |

AS-BUILT DRAWINGS

PARSONS
 100 WEST WALNUT STREET
 PASADENA, CALIFORNIA

LIGO
 CALIFORNIA INSTITUTE OF TECHNOLOGY
 MASSACHUSETTS INSTITUTE OF TECHNOLOGY

LIGO-D960910-01-0
 LASER INTERFEROMETER
 GRAVITATIONAL-WAVE OBSERVATORY
 SITE NO. 2 - LIVINGSTON, LOUISIANA

| | | | |
|---|--------------|-----------------|----------------|
| TITLE | SCALE | CONTRACT NUMBER | PROJECT NUMBER |
| STRUCTURAL STANDARD | NONE | PP150969 | 8094 |
| STRUCTURAL STEEL CONNECTION DETAILS SHEET I | SHEET NUMBER | LA-S-004 | REVISIONS |

5

4

3

2