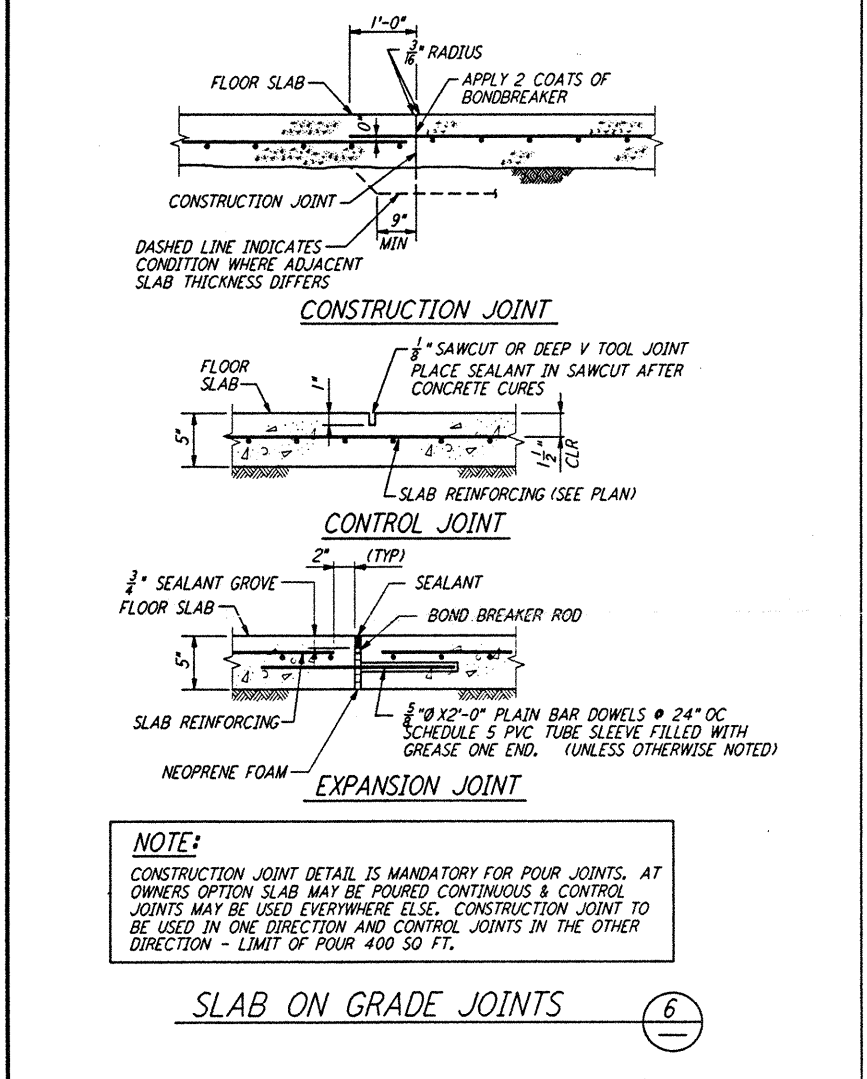
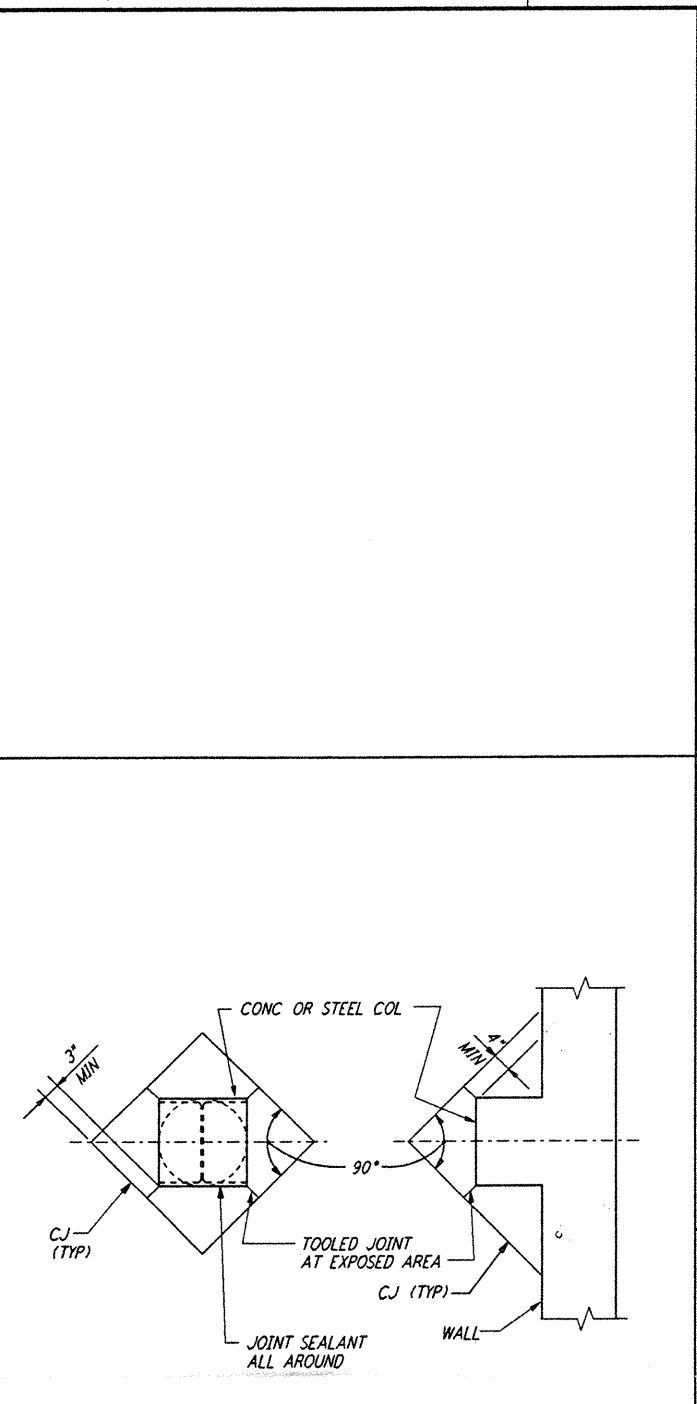


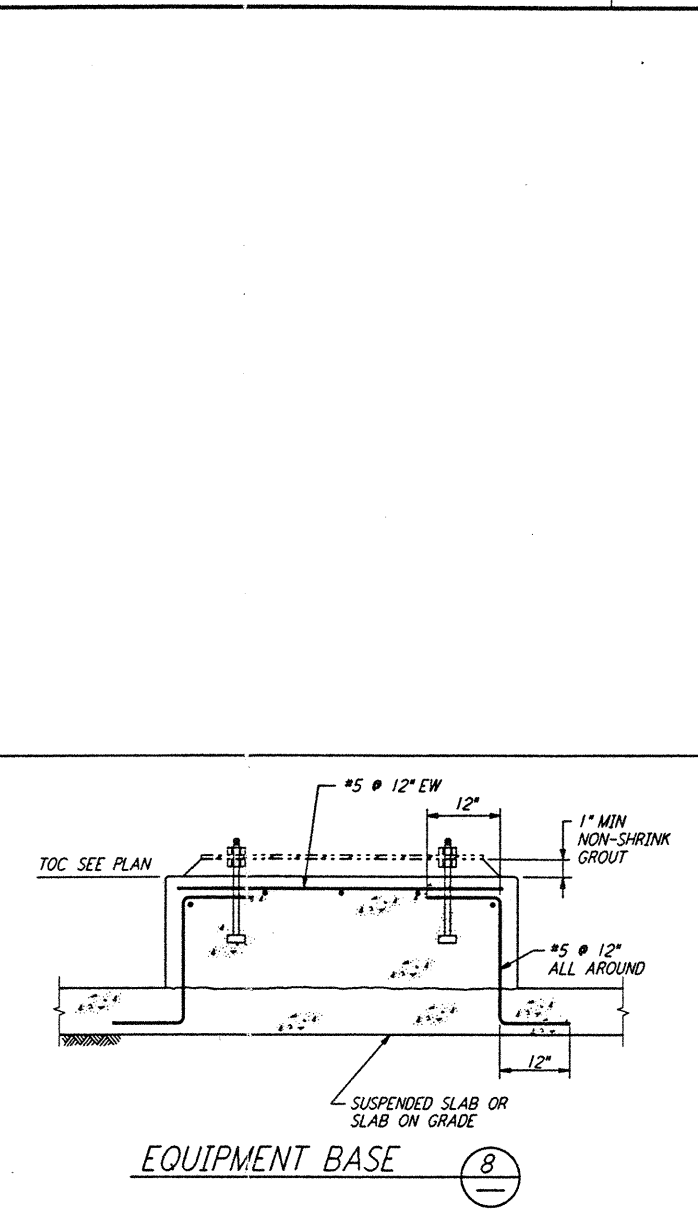
SLAB ON GRADE EDGE (1)



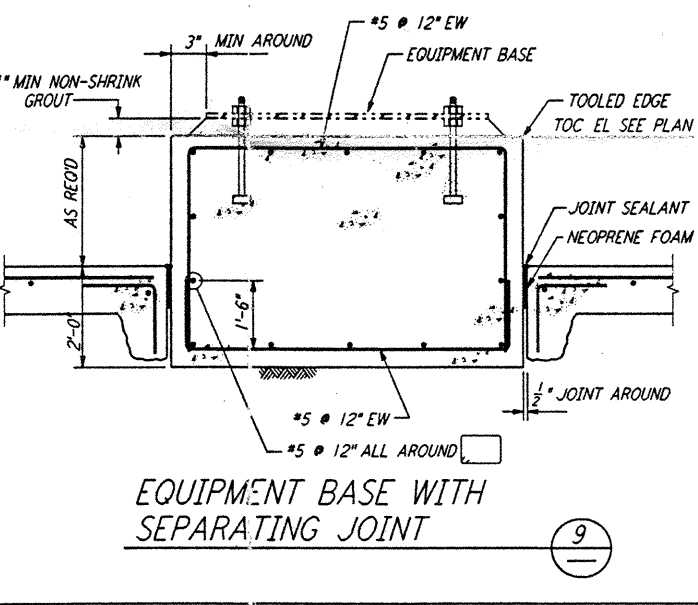
SLAB ON GRADE JOINTS (6)



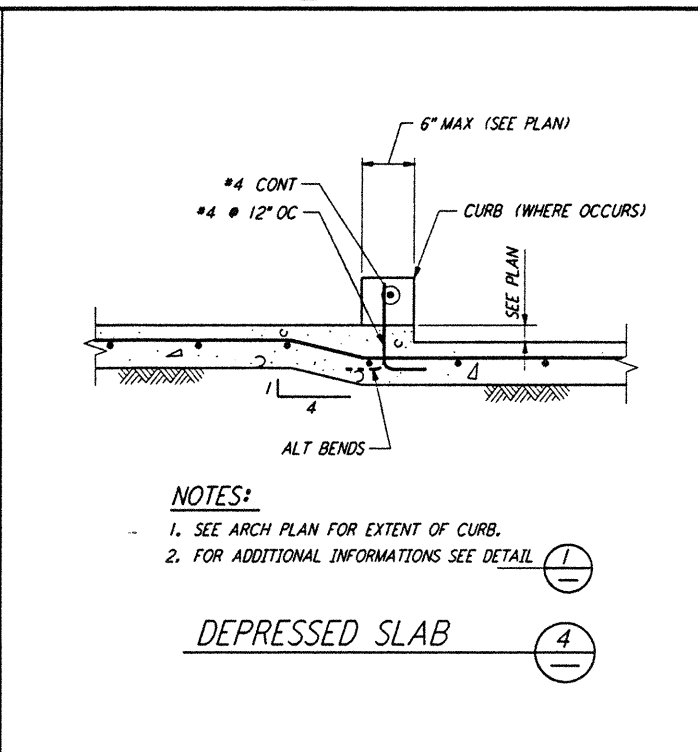
CONSTRUCTION JOINTS AT COL (7)



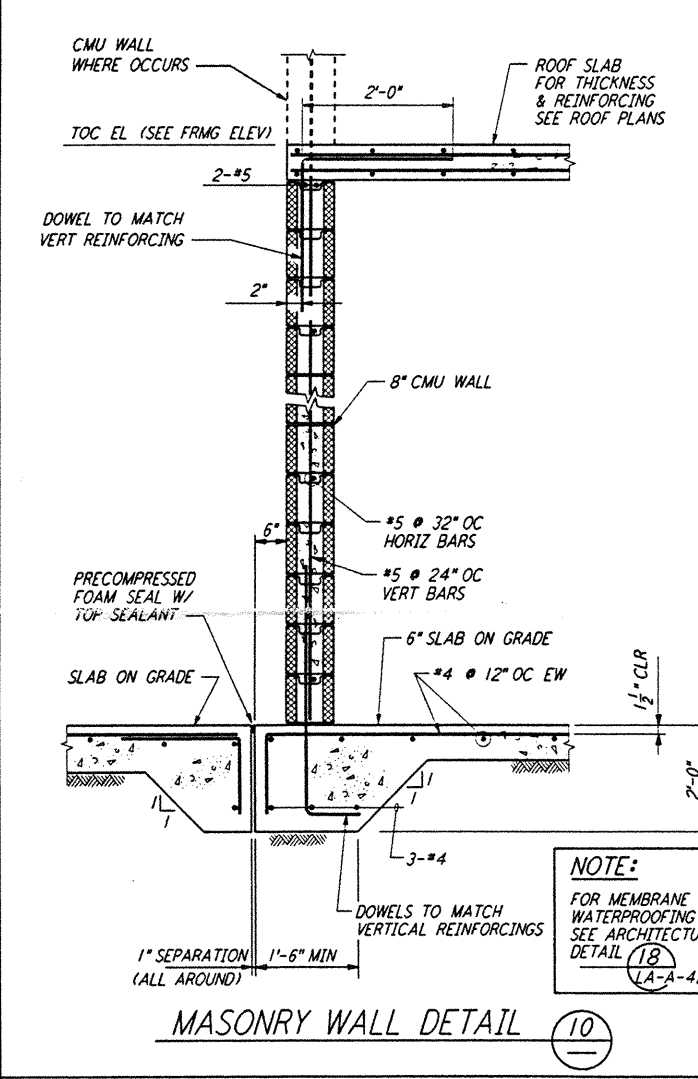
EQUIPMENT BASE (8)



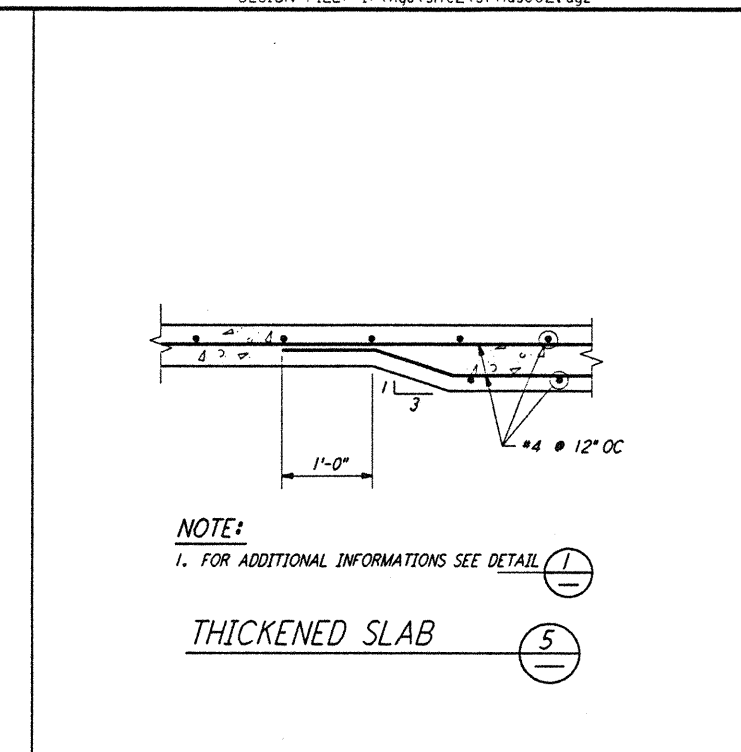
EQUIPMENT BASE WITH SEPARATING JOINT (9)



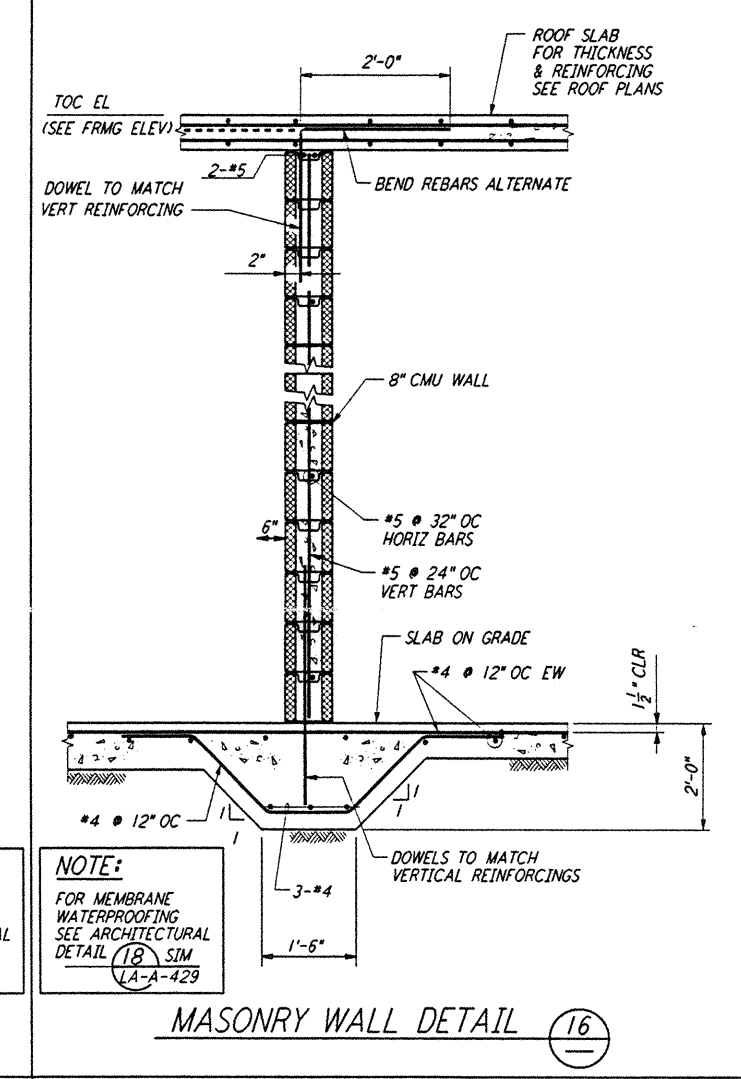
DEPRESSED SLAB (4)



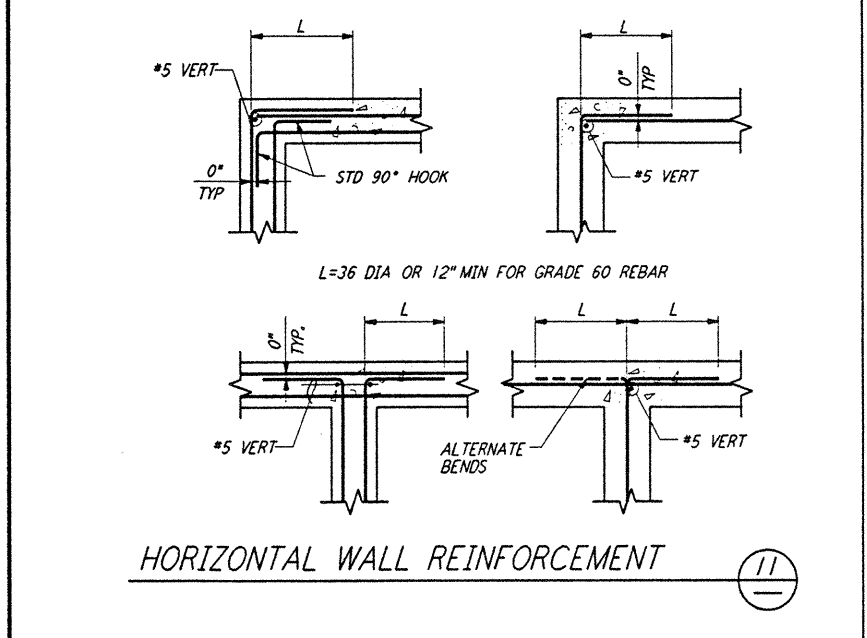
MASONRY WALL DETAIL (10)



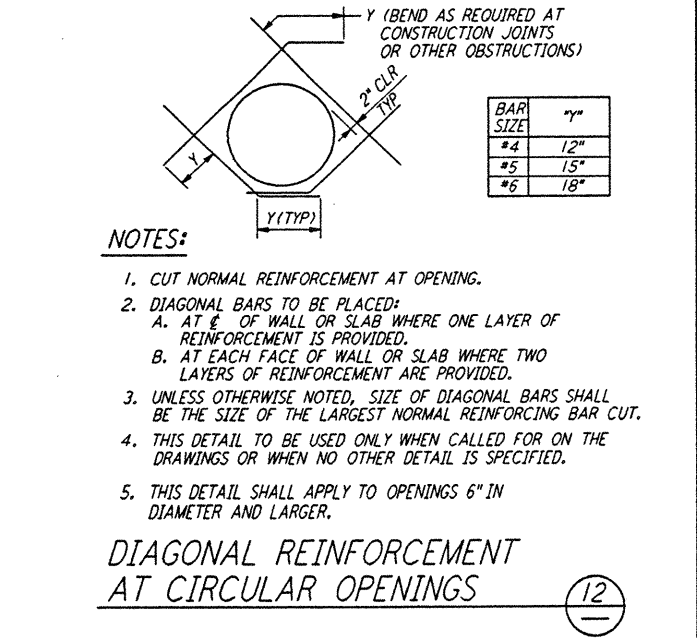
THICKENED SLAB (5)



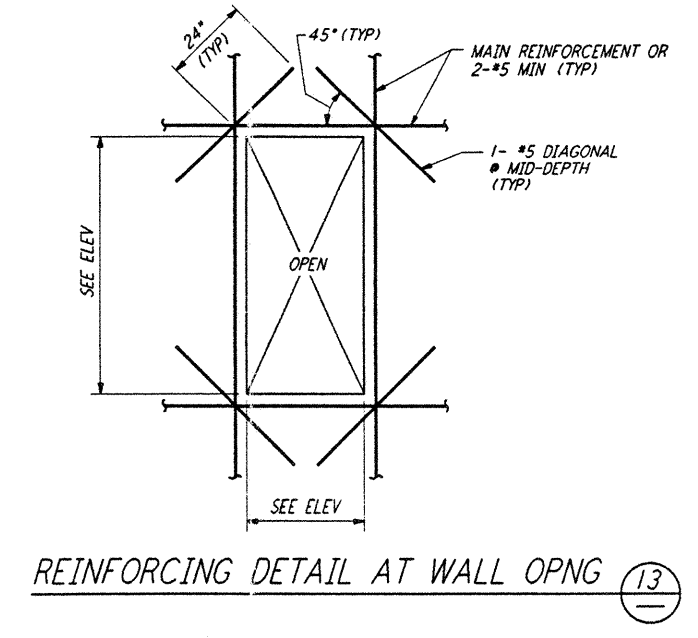
MASONRY WALL DETAIL (16)



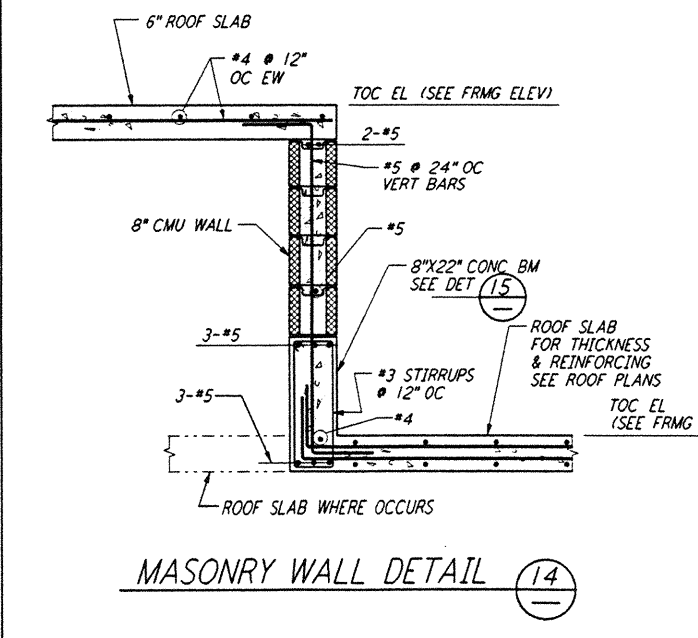
HORIZONTAL WALL REINFORCEMENT (11)



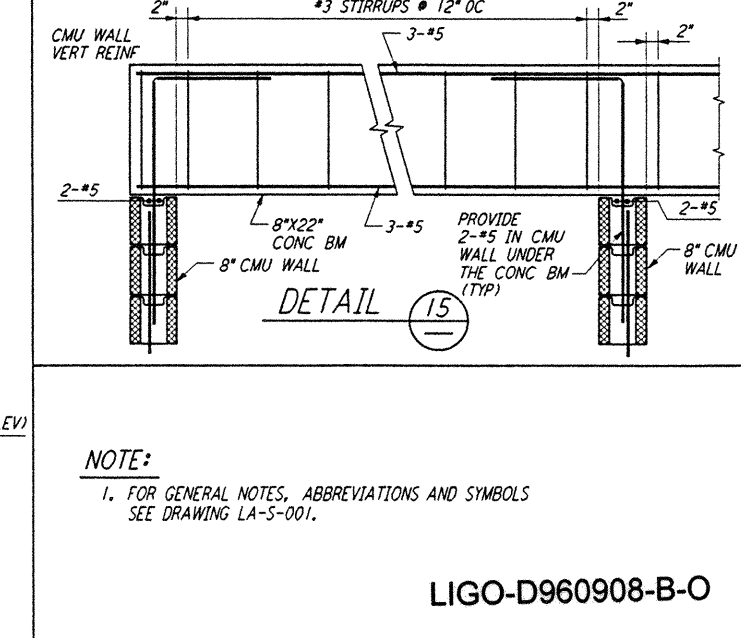
DIAGONAL REINFORCEMENT AT CIRCULAR OPENINGS (12)



REINFORCING DETAIL AT WALL OPNG (13)



MASONRY WALL DETAIL (14)



LIGO-D960908-B-O

NO.	DATE	BY	CHKD	ENGR	PROJ	DESCRIPTION
B	6-14-96	MCS	DM	DM		FINAL DESIGN REVIEW
A	10-31-95					PRELIMINARY DESIGN REVIEW

**PARSONS**  
 100 WEST WALNUT STREET  
 PASADENA, CALIFORNIA

**LIGO**  
 CALIFORNIA INSTITUTE OF TECHNOLOGY  
 MASSACHUSETTS INSTITUTE OF TECHNOLOGY

LASER INTERFEROMETER  
 GRAVITATIONAL-WAVE OBSERVATORY  
 SITE NO. 2 - LIVINGSTON, LOUISIANA

STRUCTURAL STANDARD  
 CONCRETE DETAILS SHEET 1

PP150969 8094  
**LA-S-002**

This document and the design it covers are the property of PARSONS. They are loaned only with the consent of PARSONS to the borrower. PARSONS shall not be reproduced, copied, loaned, exhibited, or used in any other way, except by written consent from PARSONS to the borrower.