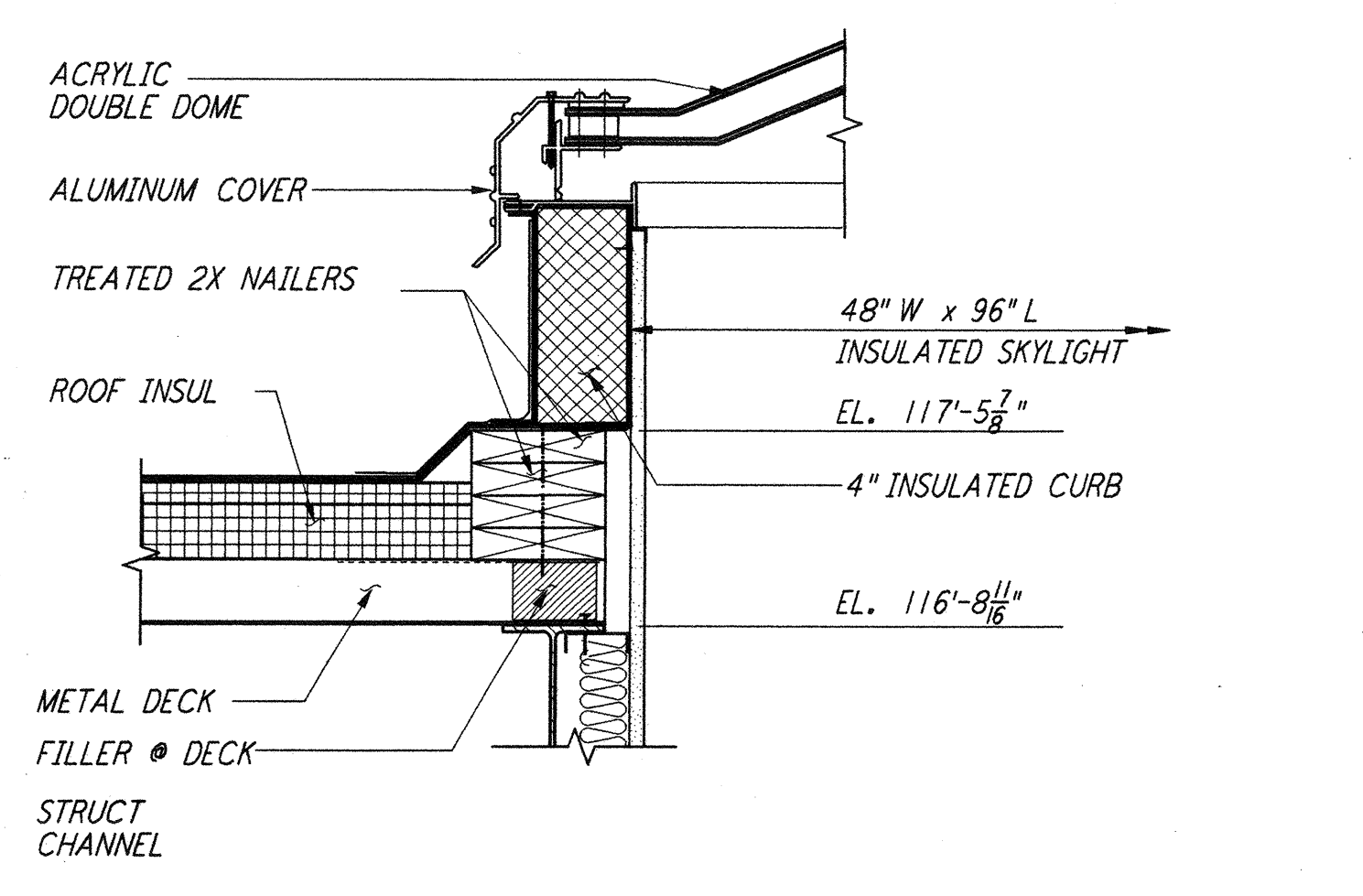
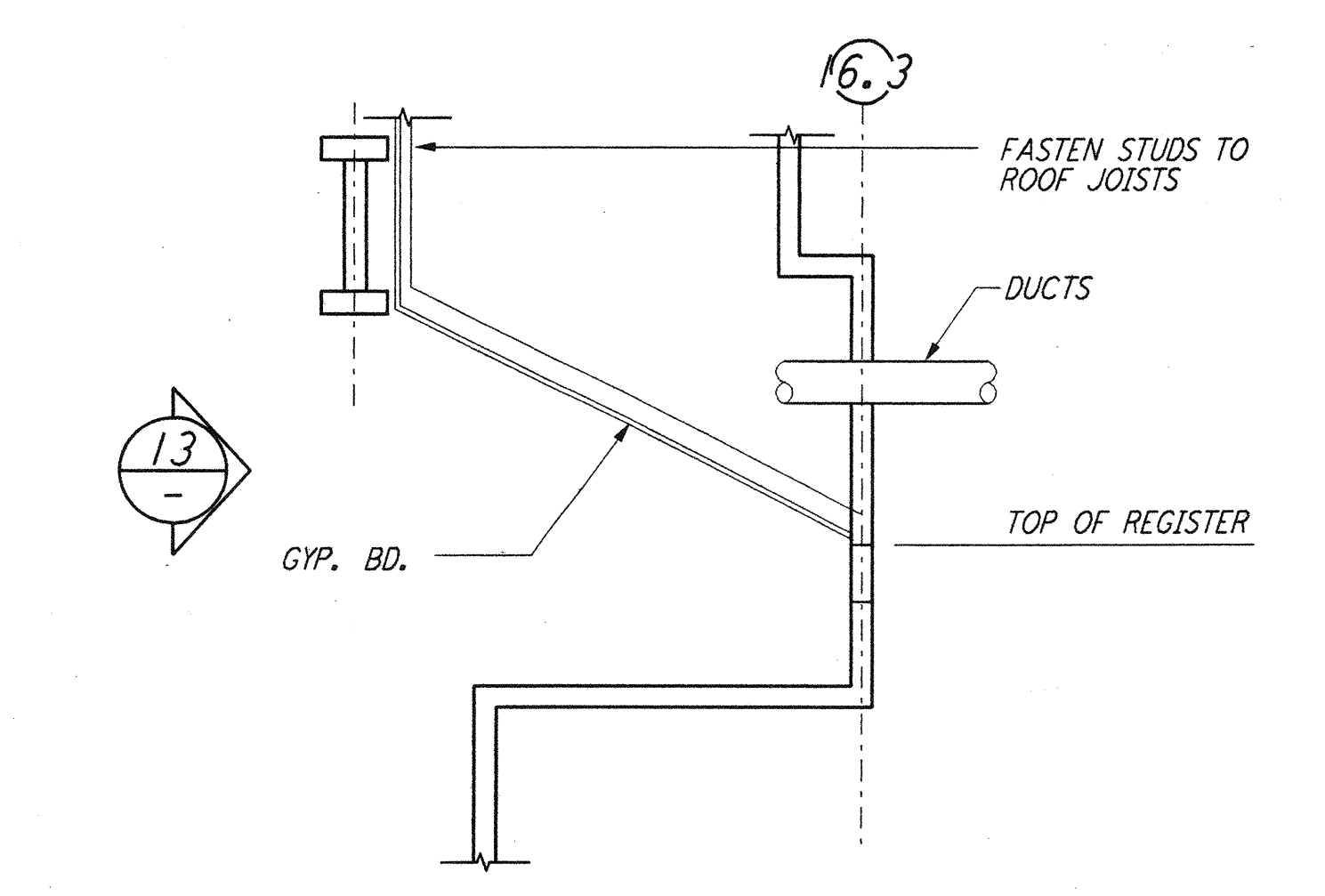


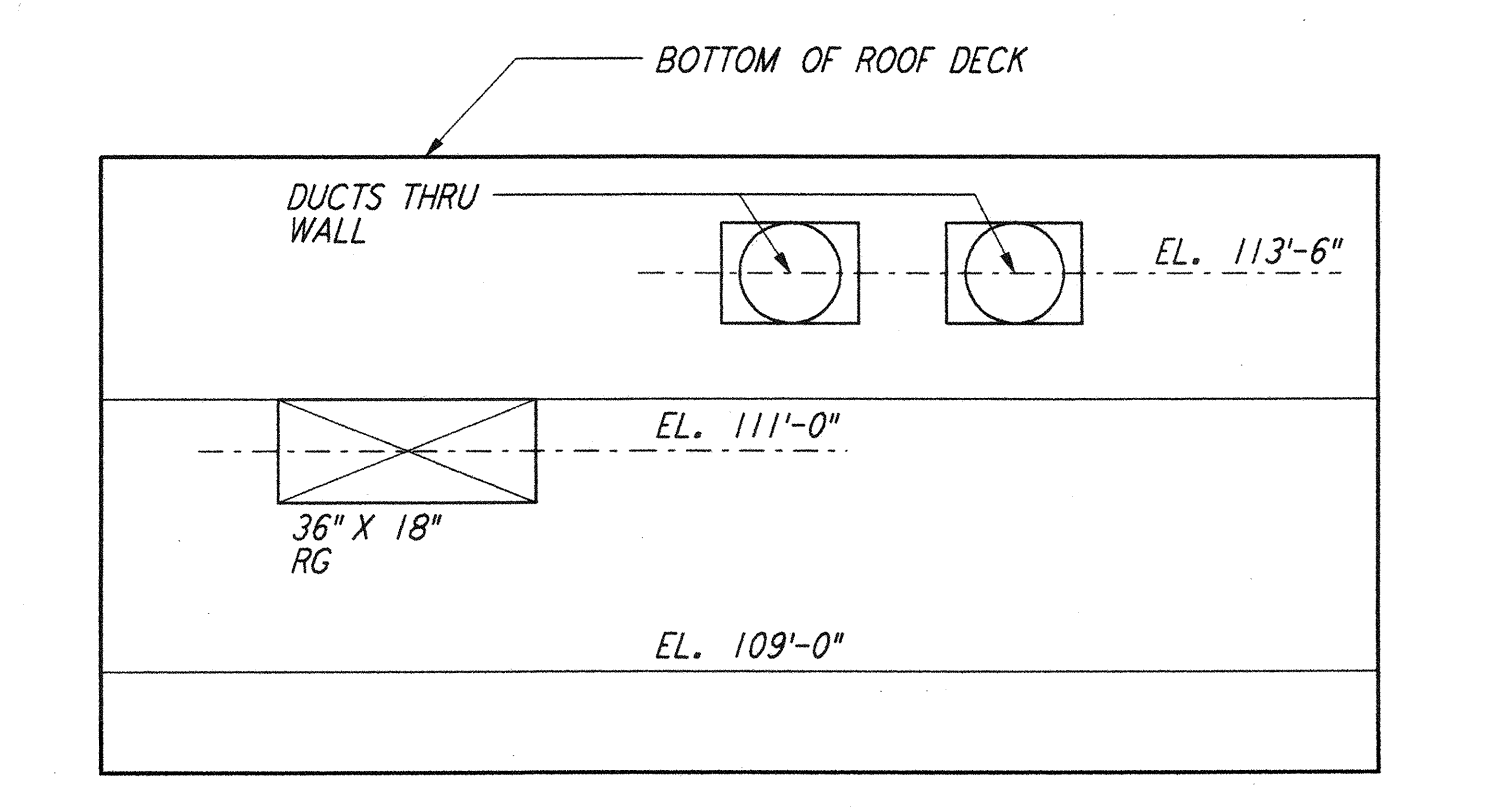
SKYLIGHT EDGE
 1/2" = 1'-0"
 REF LA-A-425 LA-A-153



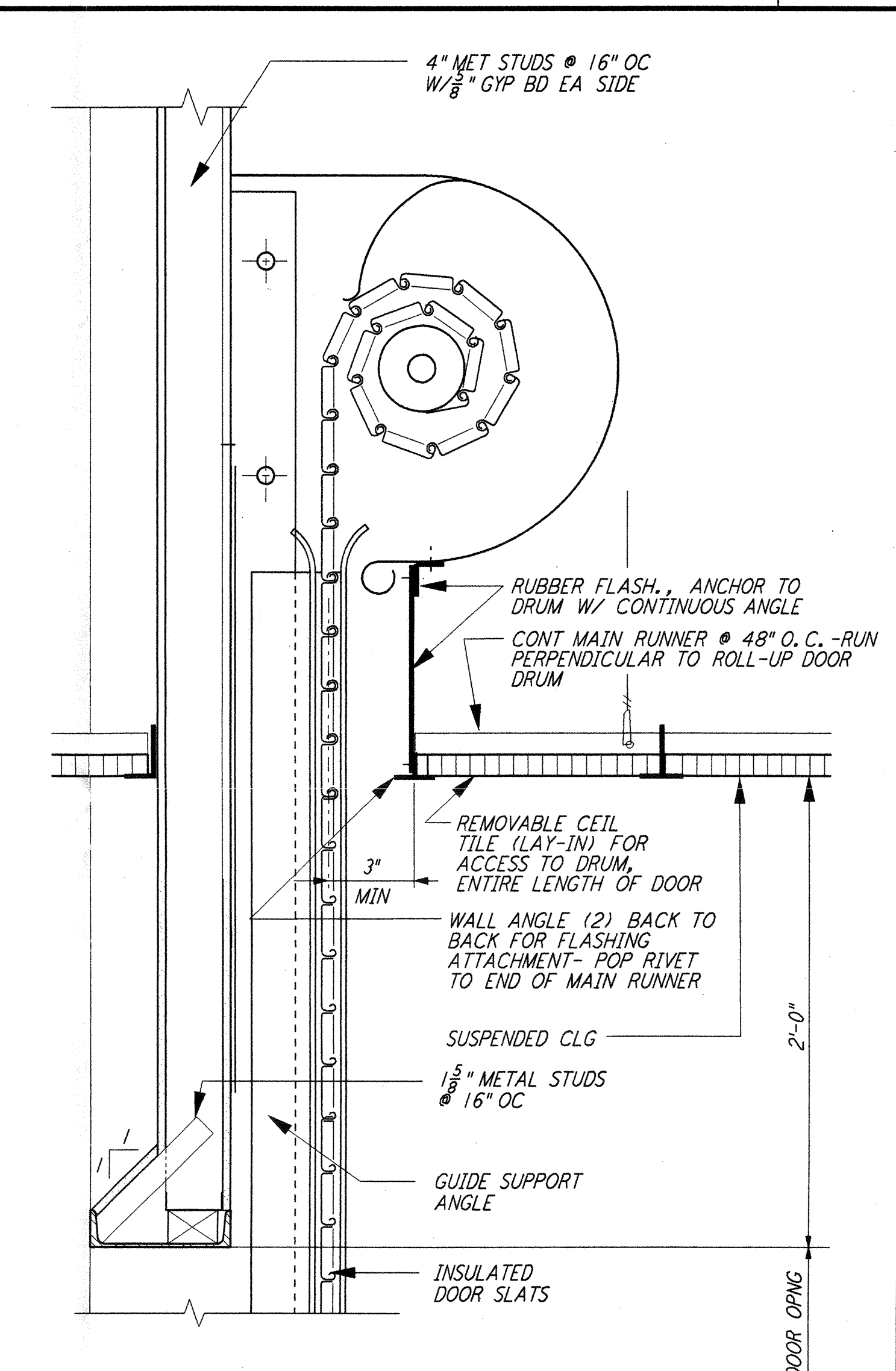
SKYLIGHT CURB @ LOW POINT
 1/2" = 1'-0"
 REF LA-A-425 LA-A-153



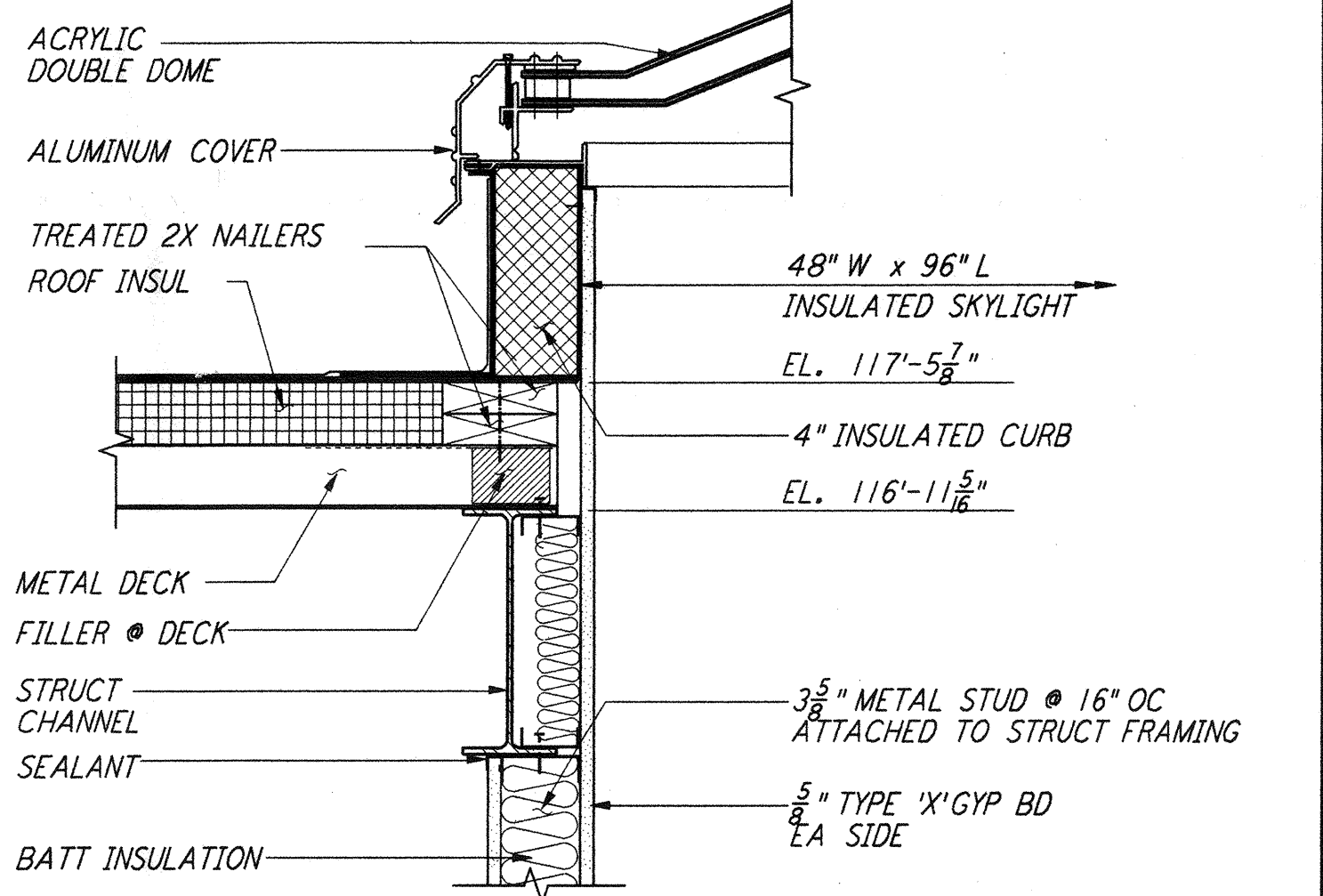
SECTION AT SOFFIT
 SCALE: NONE
 REF LA-A-427 LA-A-108



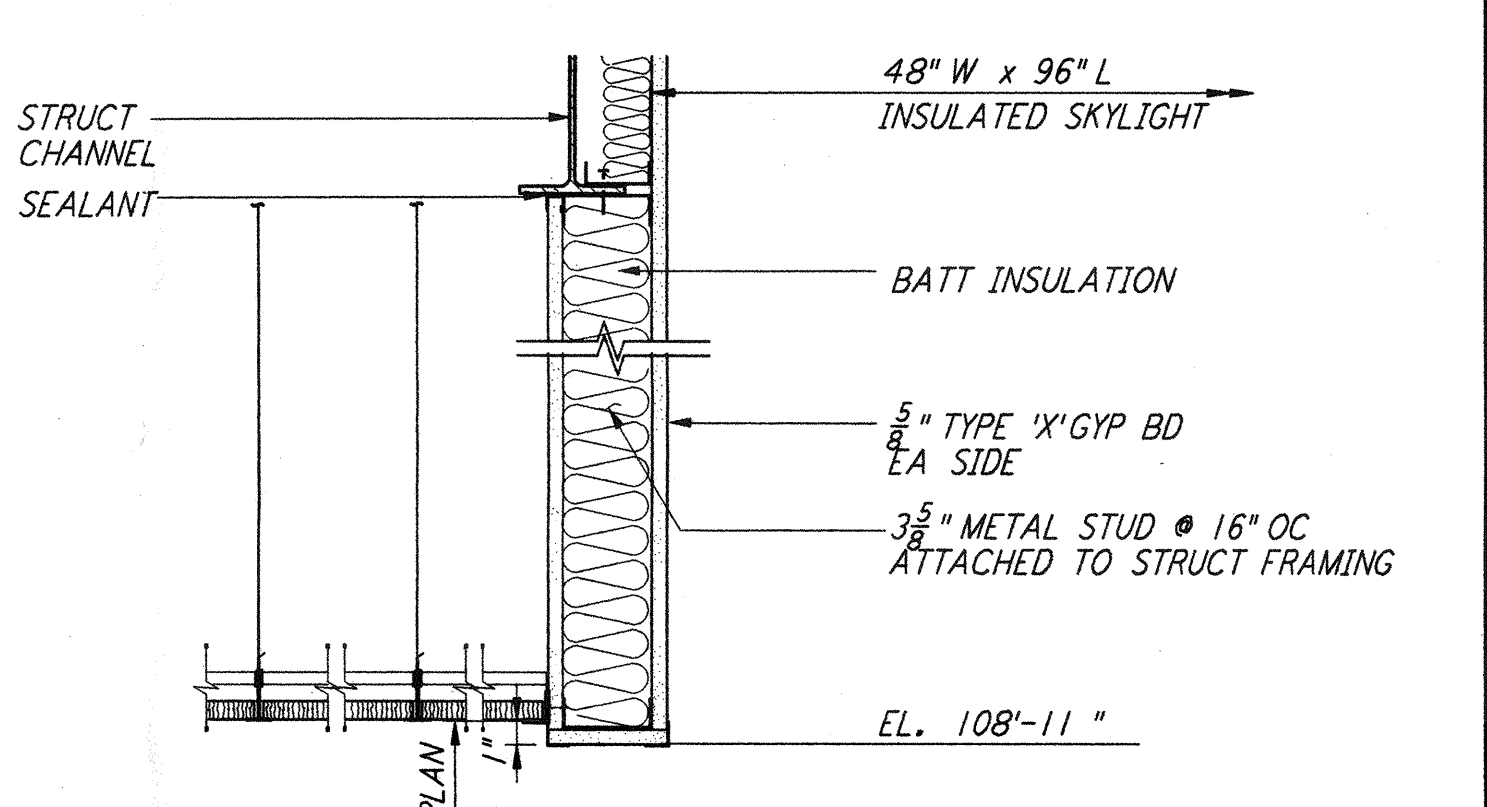
SOFFIT ELEVATION
 SCALE: NONE
 REF LA-A-427 LA-A-108



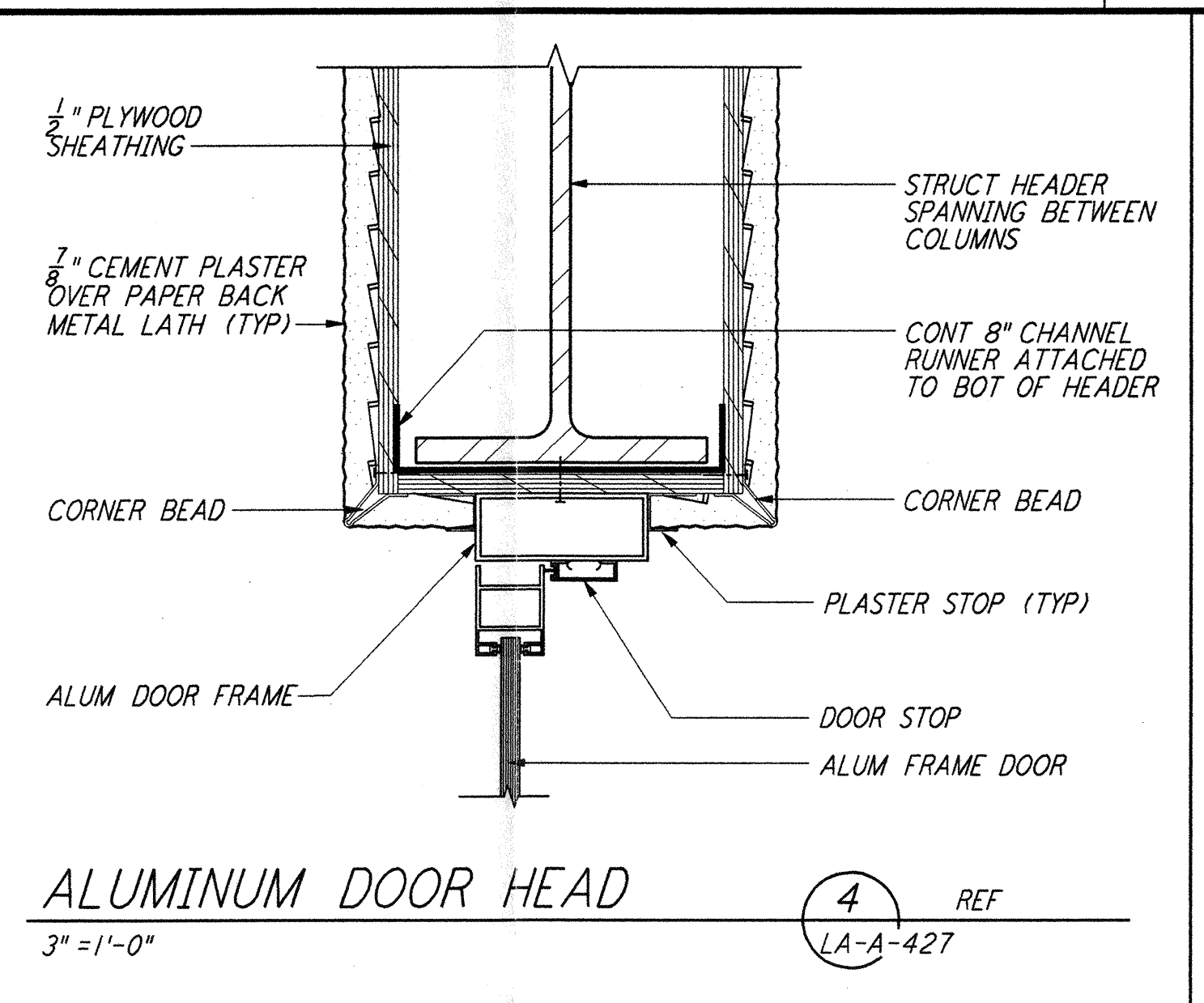
OVERHEAD COILING DOOR
 1/2" = 1'-0"
 REF LA-A-427 LA-A-261 SEE SPEC



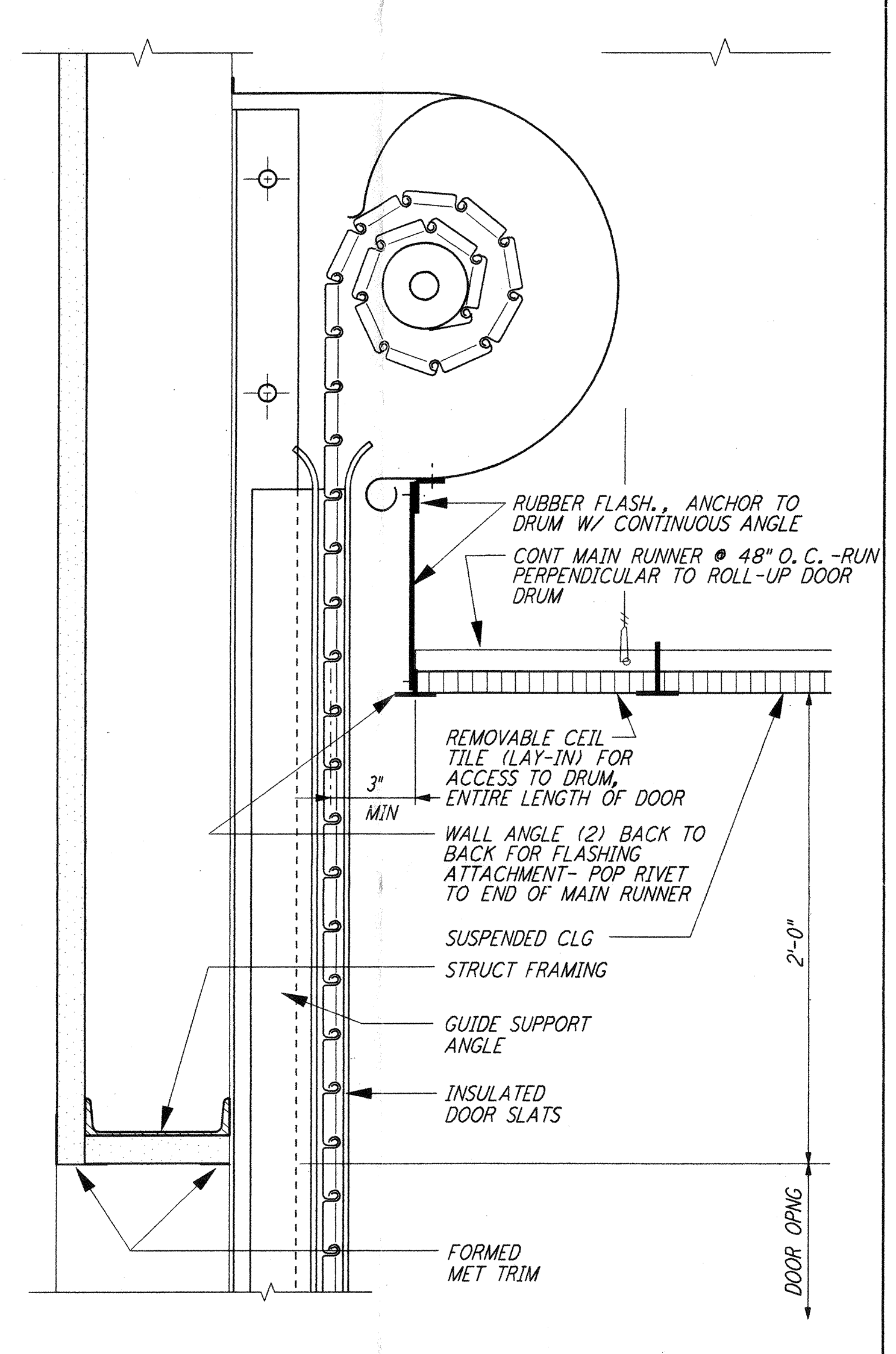
SKYLIGHT CURB
 1/2" = 1'-0"
 REF LA-A-425 LA-A-153 LA-A-152



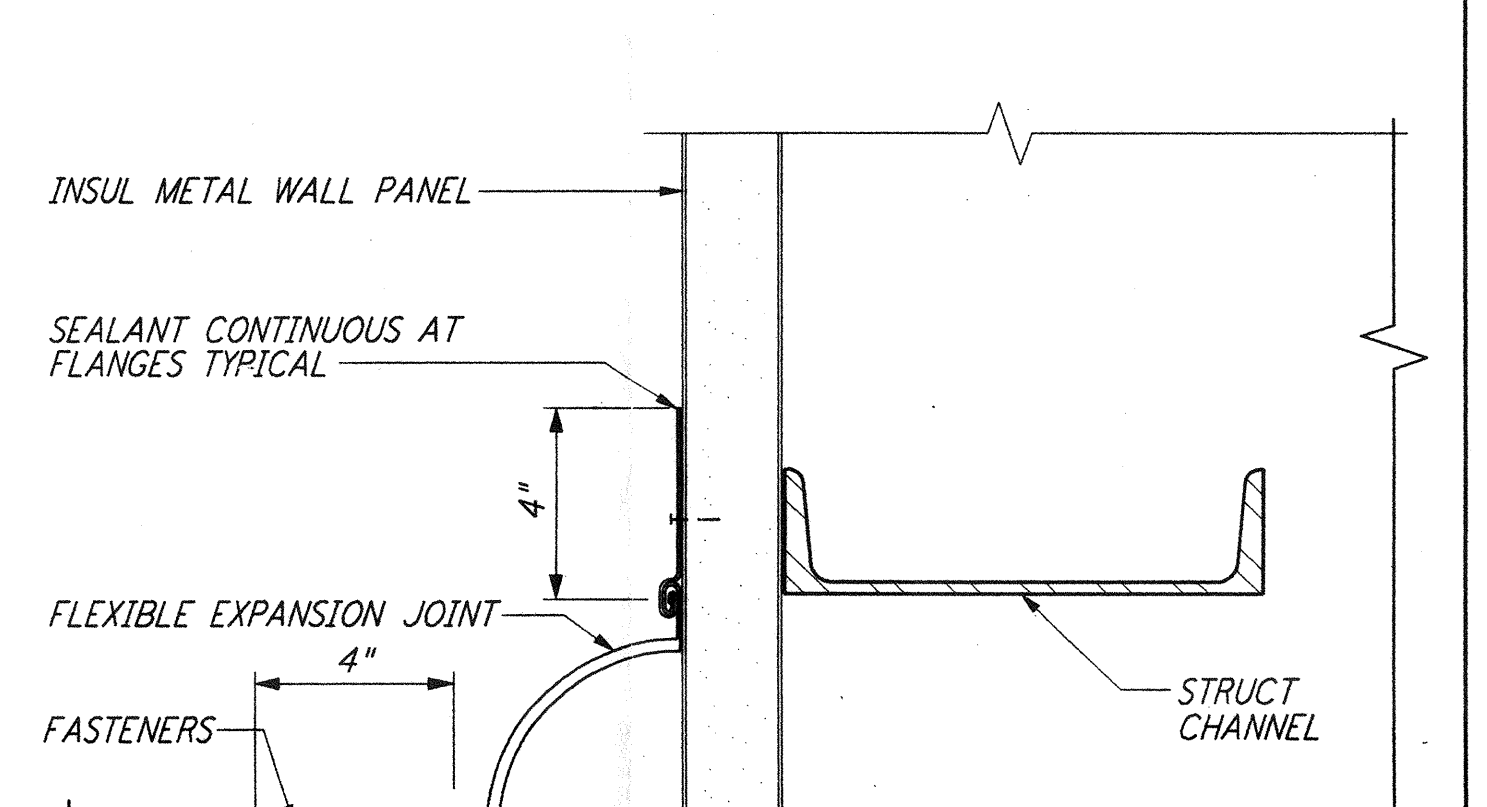
CEILING EDGE @ SKYLIGHT
 1/2" = 1'-0"
 REF LA-A-425 LA-A-153 LA-A-152



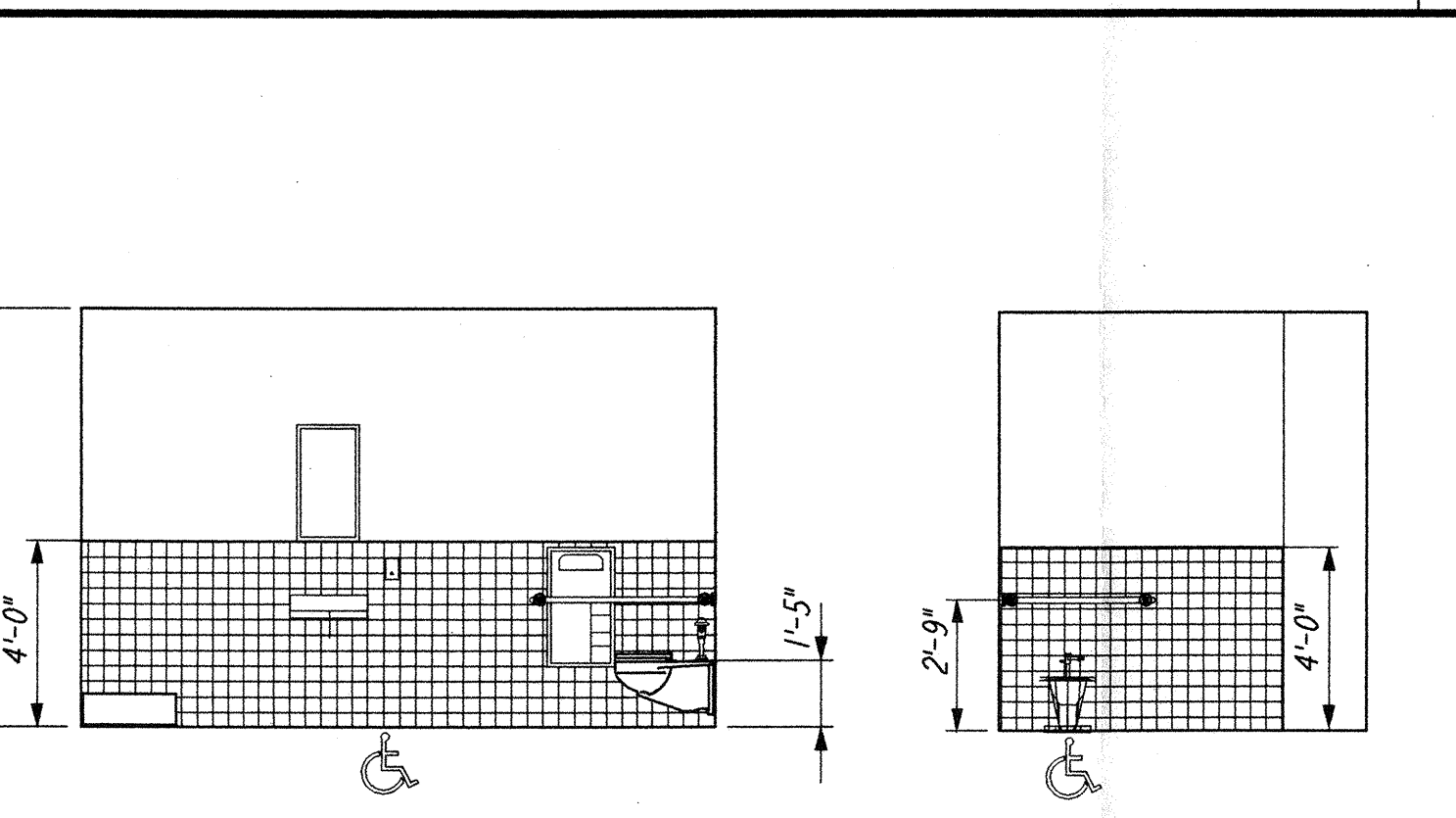
ALUMINUM DOOR HEAD
 3" = 1'-0"
 REF LA-A-427



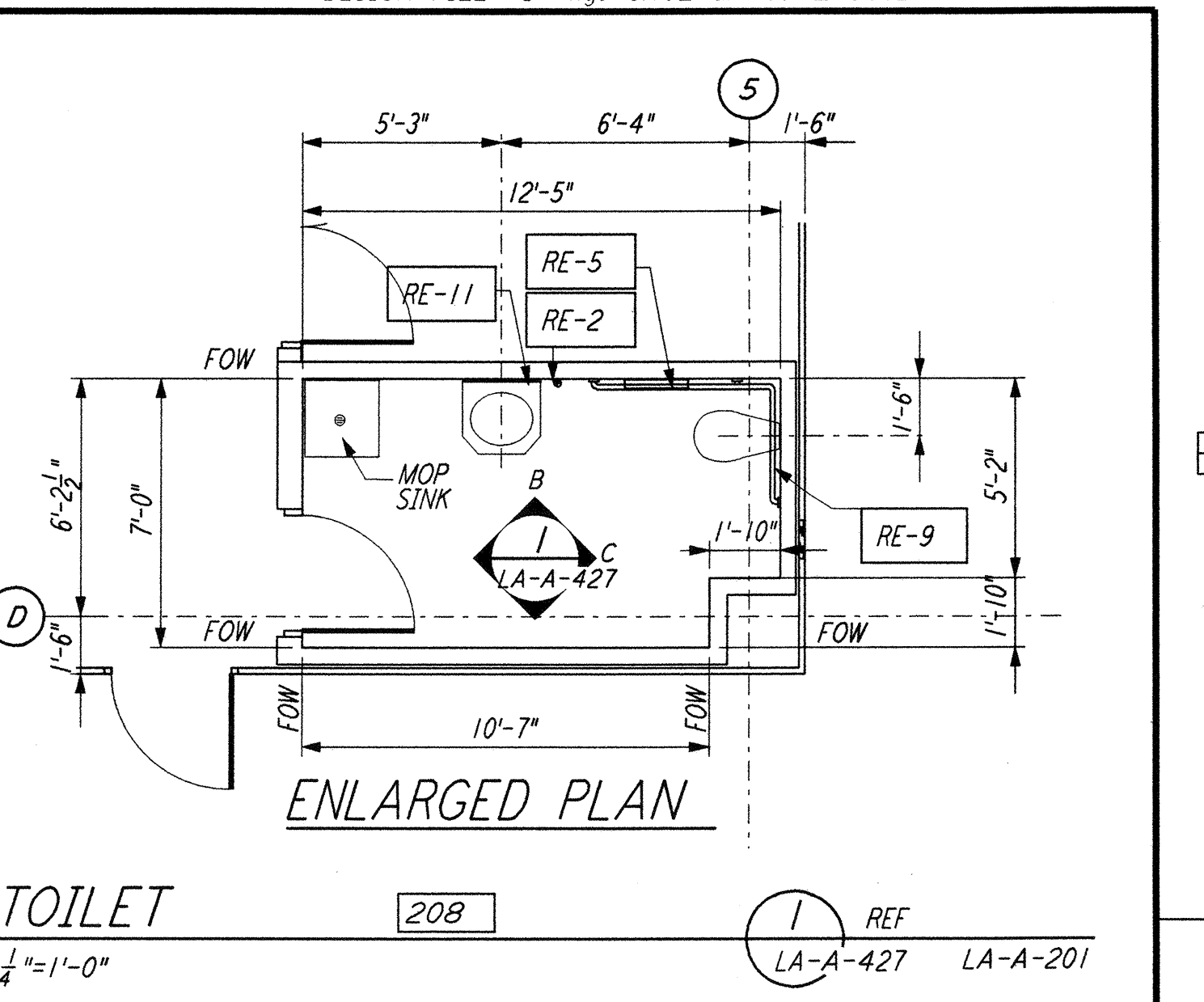
OVERHEAD COILING DOOR
 1/2" = 1'-0"
 REF LA-A-427 LA-A-261 SEE SPEC



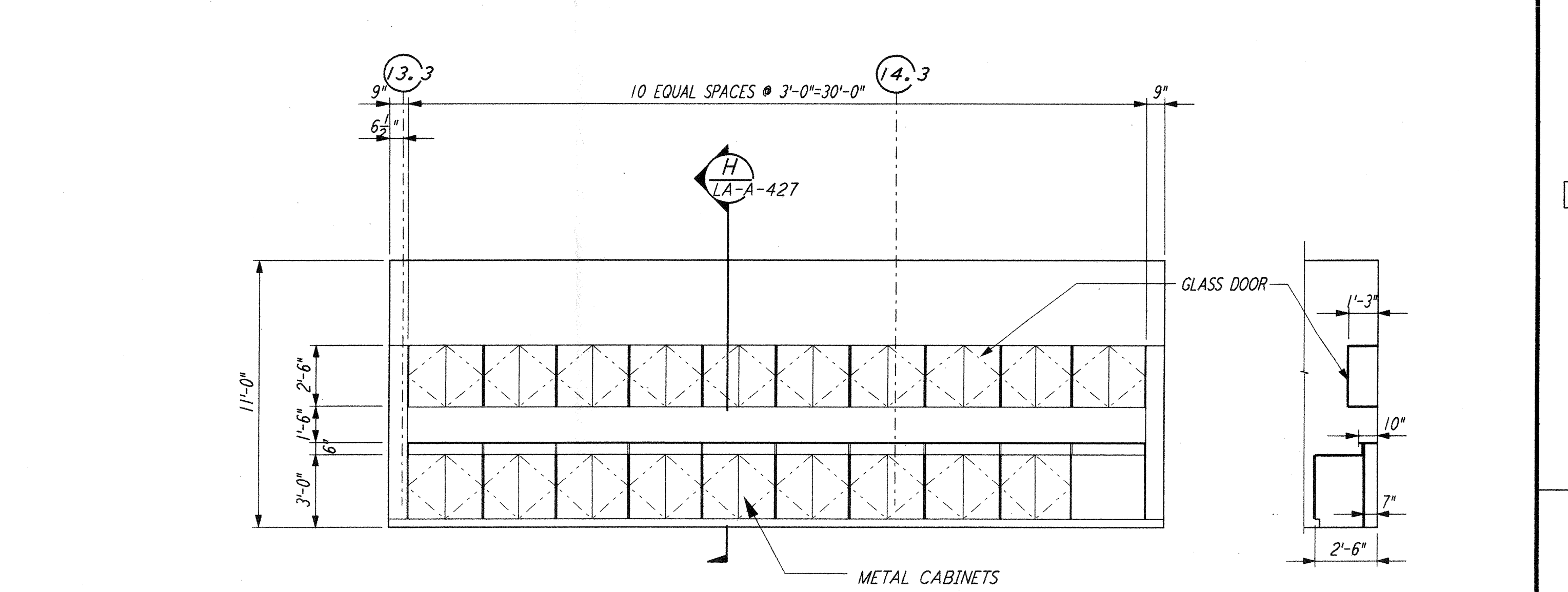
EXP JT @ BM TUBE ENCL
 3" = 1'-0"
 REF LA-A-427 LA-A-201



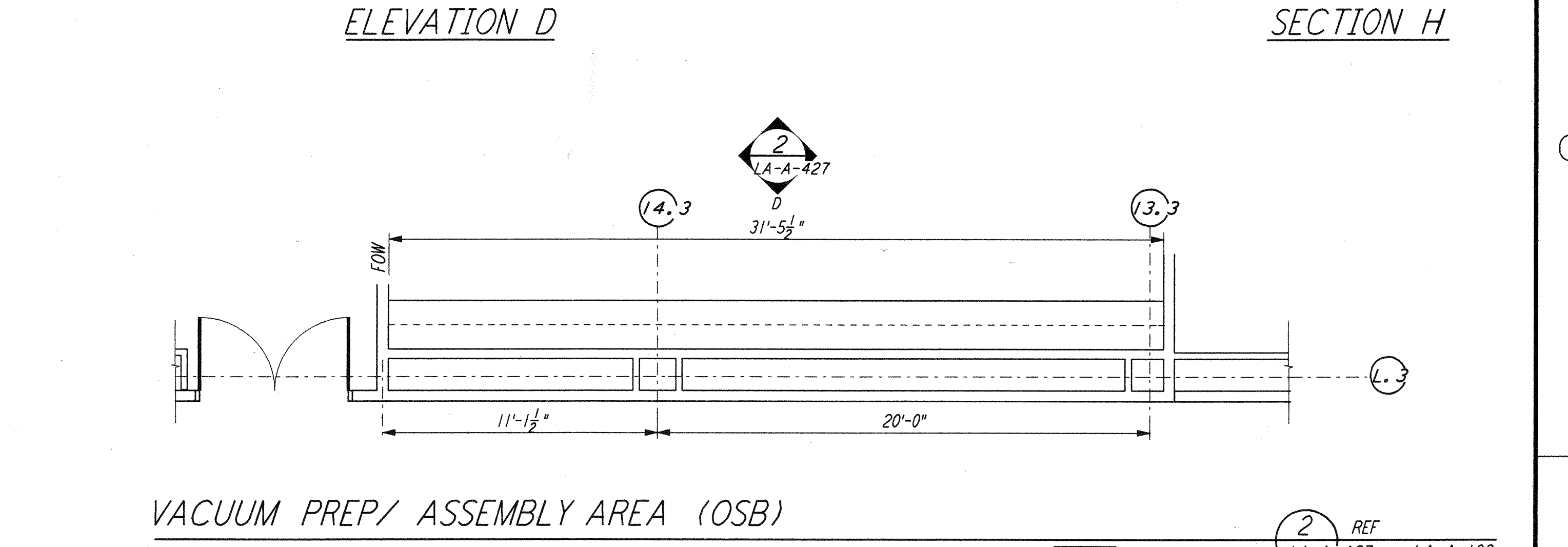
ELEVATION B **ELEVATION C**



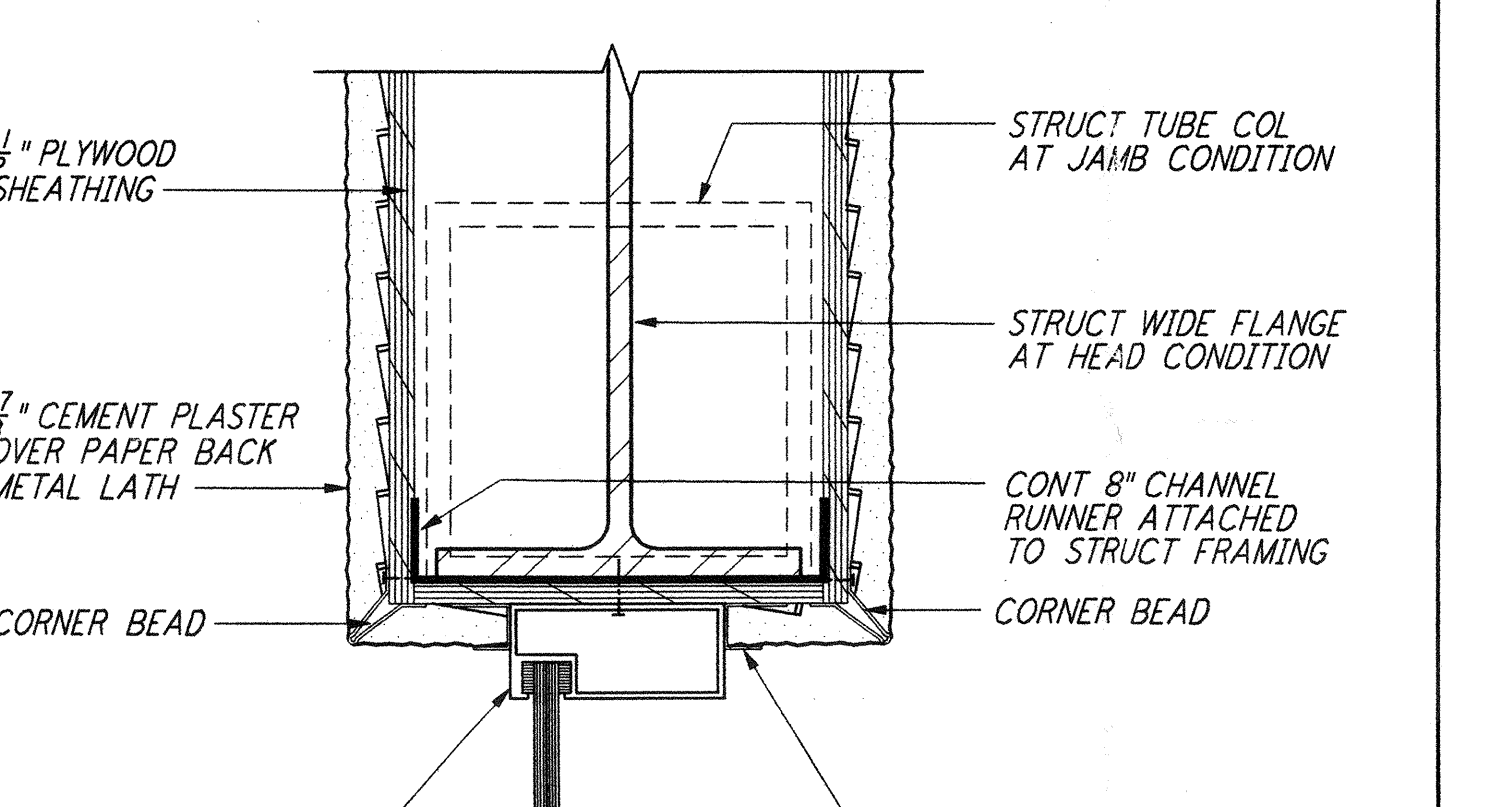
TOILET
 1/4" = 1'-0"
 REF LA-A-427 LA-A-201



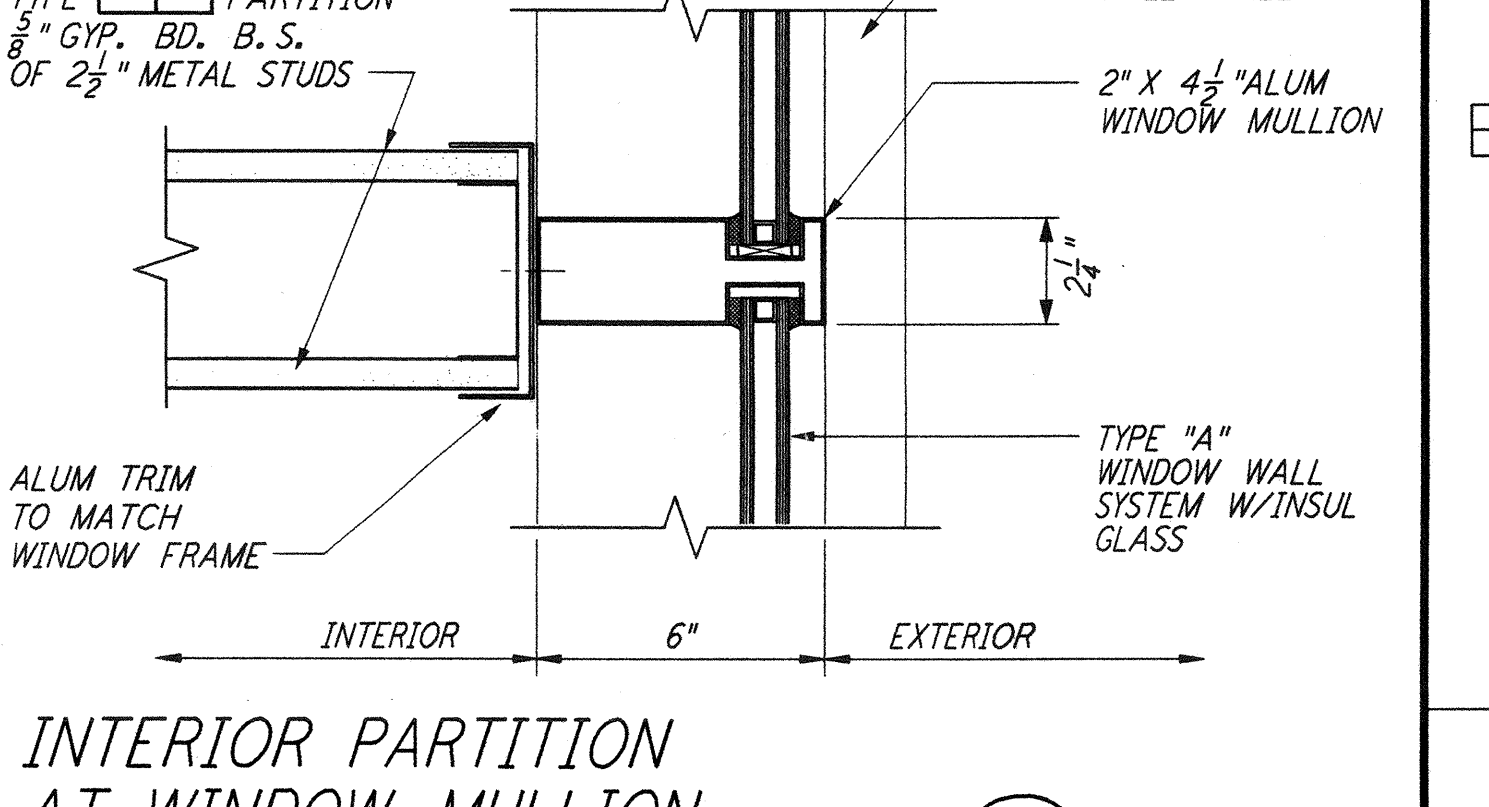
ELEVATION D **SECTION H**



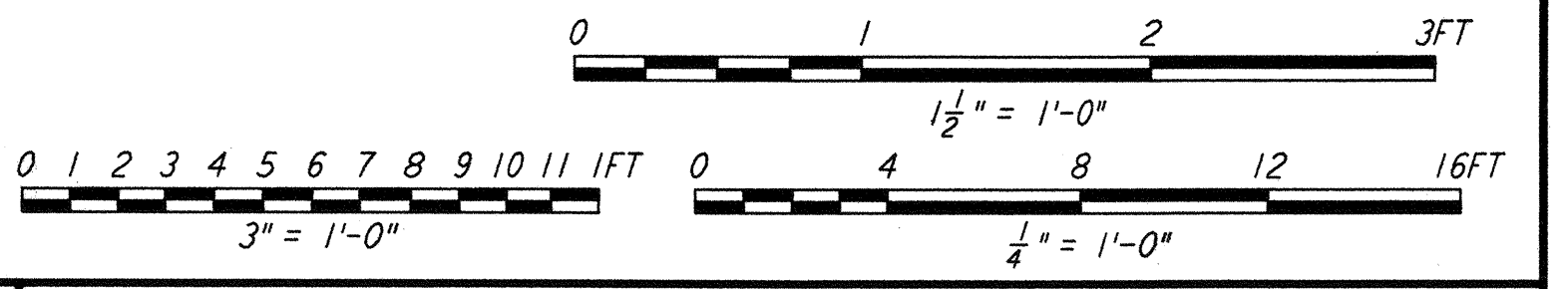
VACUUM PREP/ ASSEMBLY AREA (OSB)
 1/4" = 1'-0"
 REF LA-A-427 LA-A-109



ALUM WDW HEAD (JMB SIM)
 3" = 1'-0"
 REF LA-A-427



INTERIOR PARTITION AT WINDOW MULLION
 3" = 1'-0" (WINDOW TYPE "A")
 REF LA-A-427 LA-A-108



NO.	DATE	BY	CHKD	ENGR	PROJ	DESCRIPTION
2	08-07-98	SJM	CKT	AK	TDM	ISSUED FOR AS-BUILT
1	2-28-97	CKT	TB	AK	TDM	OSB REVISION

NO.	DATE	BY	CHKD	ENGR	PROJ	DESCRIPTION
1	11-15-96	CKT	TB	AK	TDM	ISSUED FOR CONSTRUCTION
2	11-15-96	TB	AK	TDM	MDW	CHECKED
3	11-15-96	SF	AK	TDM	MDW	ENGINEER
4	11-15-96	MDW	AK	TDM	MDW	PROJ

AS-BUILT DRAWINGS

PARSONS
 100 WEST WALNUT STREET
 PASADENA, CALIFORNIA

LIGO
 CALIFORNIA INSTITUTE OF TECHNOLOGY
 MASSACHUSETTS INSTITUTE OF TECHNOLOGY

LASER INTERFEROMETER GRAVITATIONAL-WAVE OBSERVATORY SITE NO. 2 - LIVINGSTON, LOUISIANA

TITLE	ARCHITECTURAL INTERIOR ELEVATIONS & MISCELLANEOUS DETAILS
SCALE	1/2" = 1'-0"
CONTRACT NUMBER	PPI 50969
PROJECT NUMBER	8094
SHEET NUMBER	LA-A-427

This document and the design it covers are the property of PARSONS. They are loaned only with the borrower's expressed written agreement that they will not be reproduced, copied, loaned, exhibited, or used in any other way, except by written consent from PARSONS to the borrower.