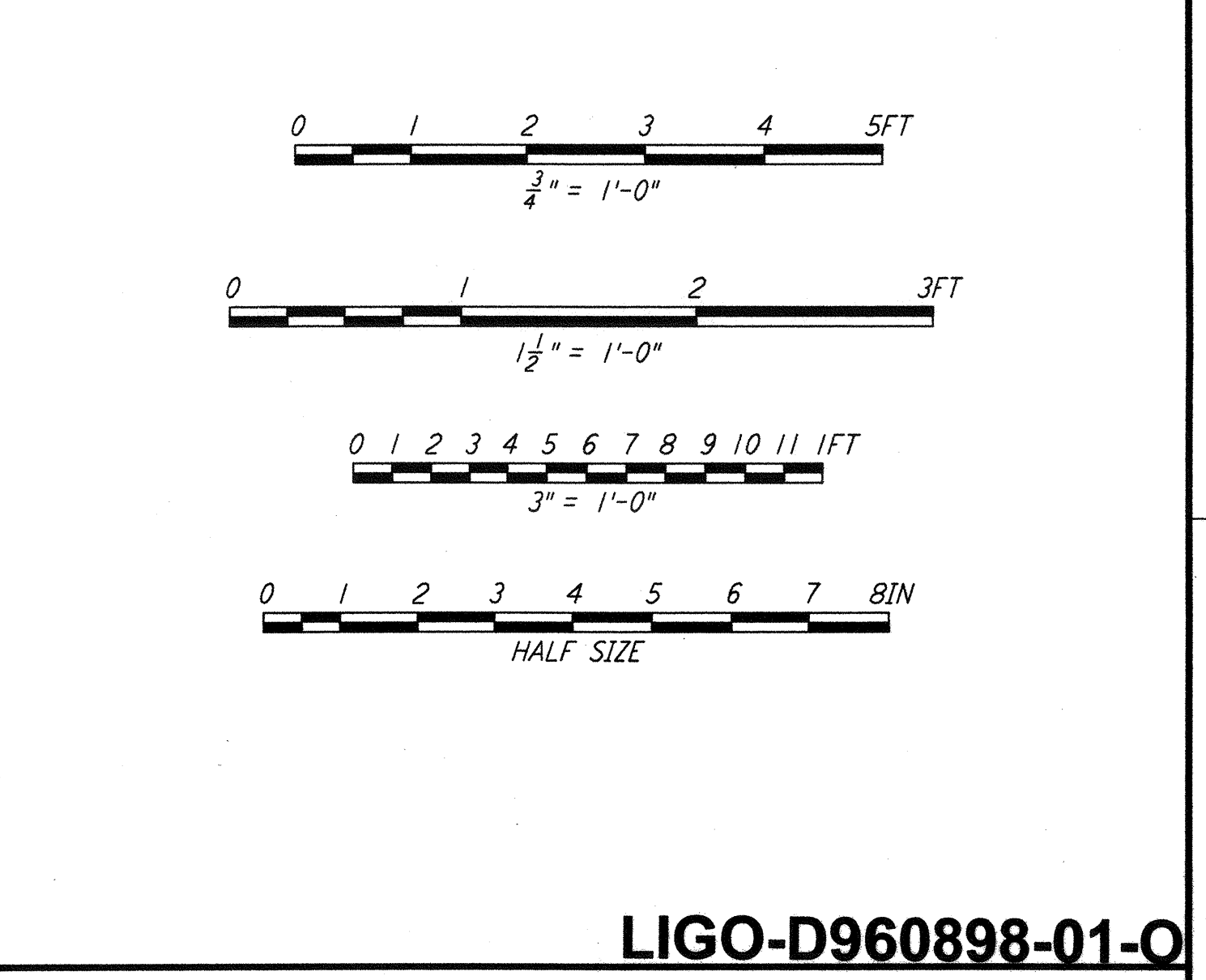
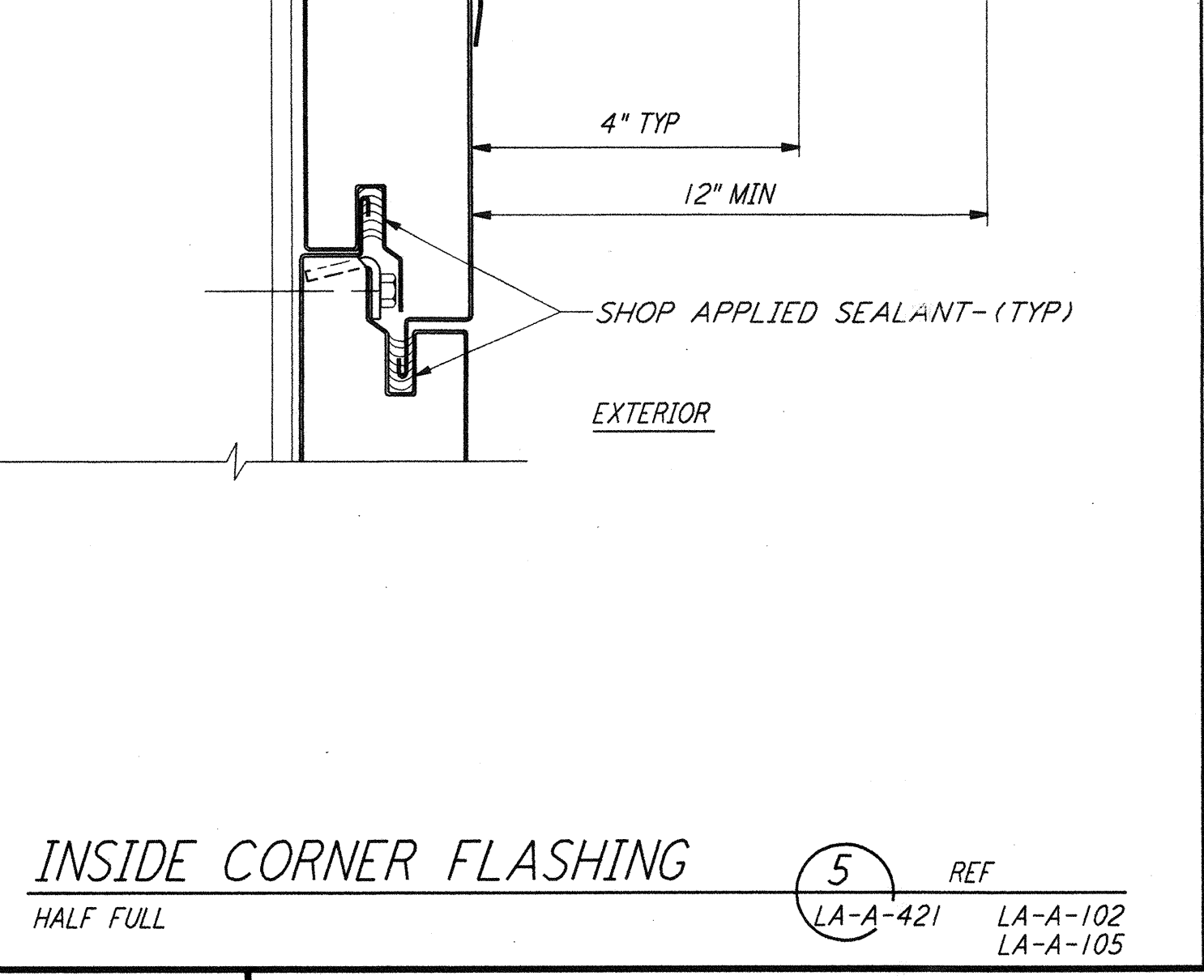
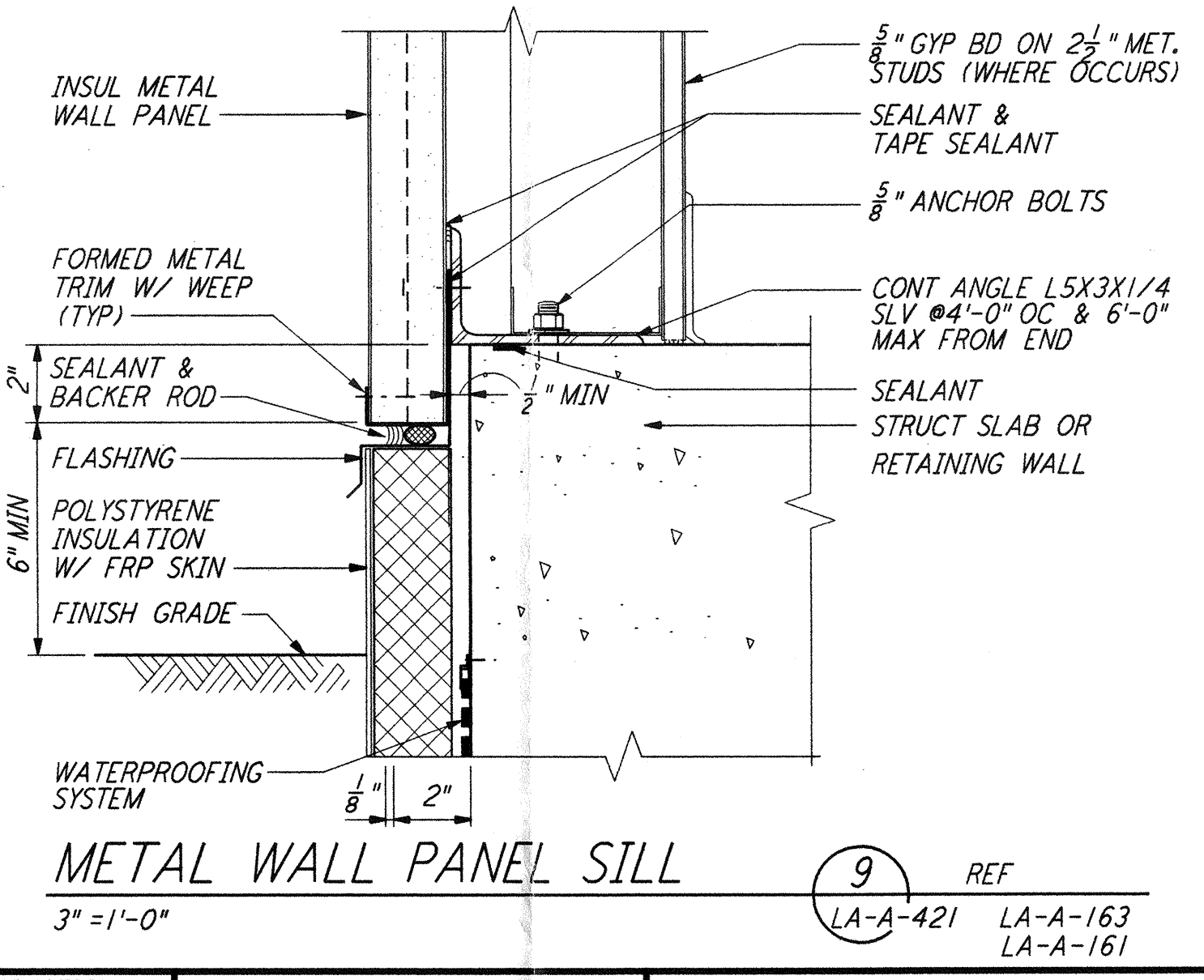
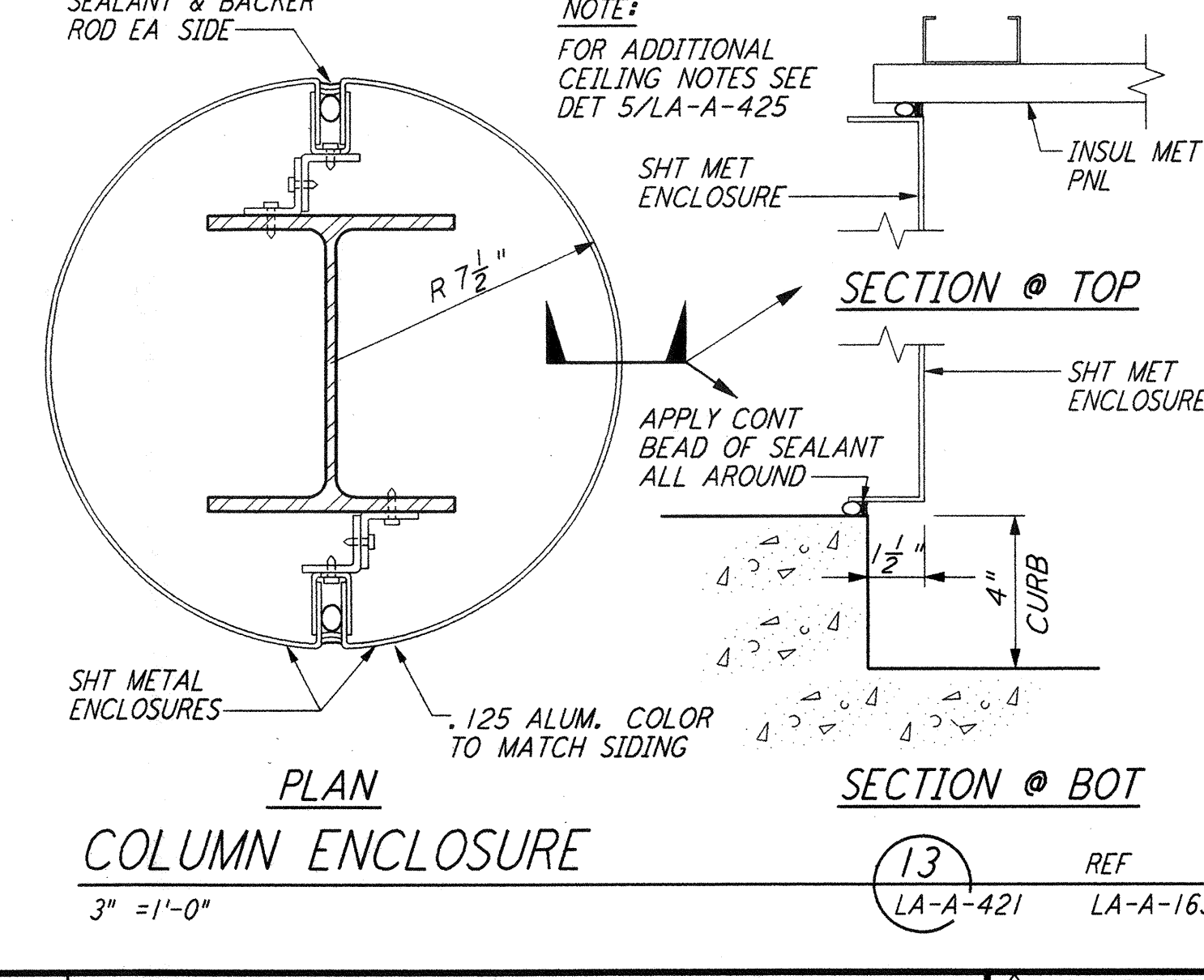
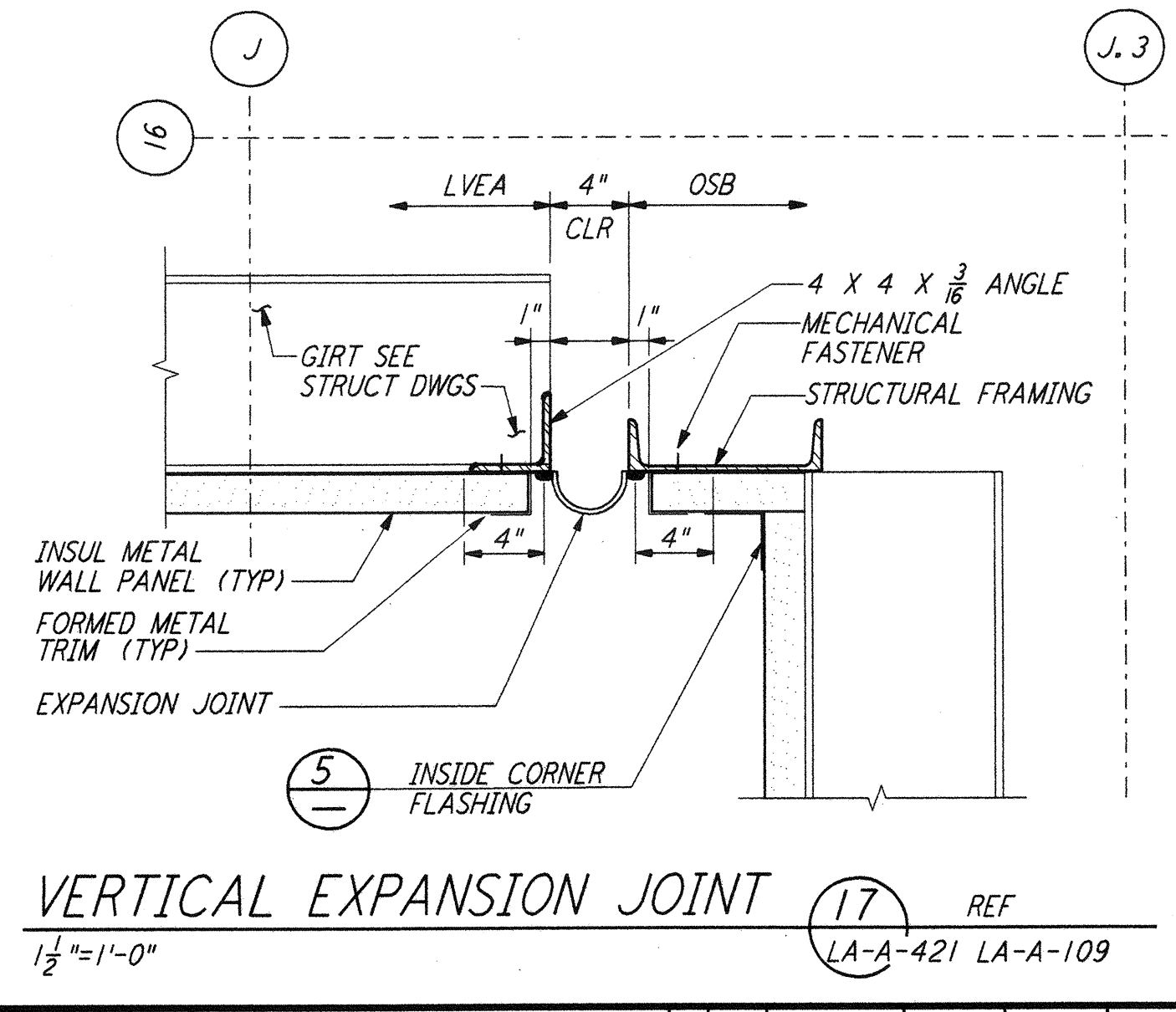
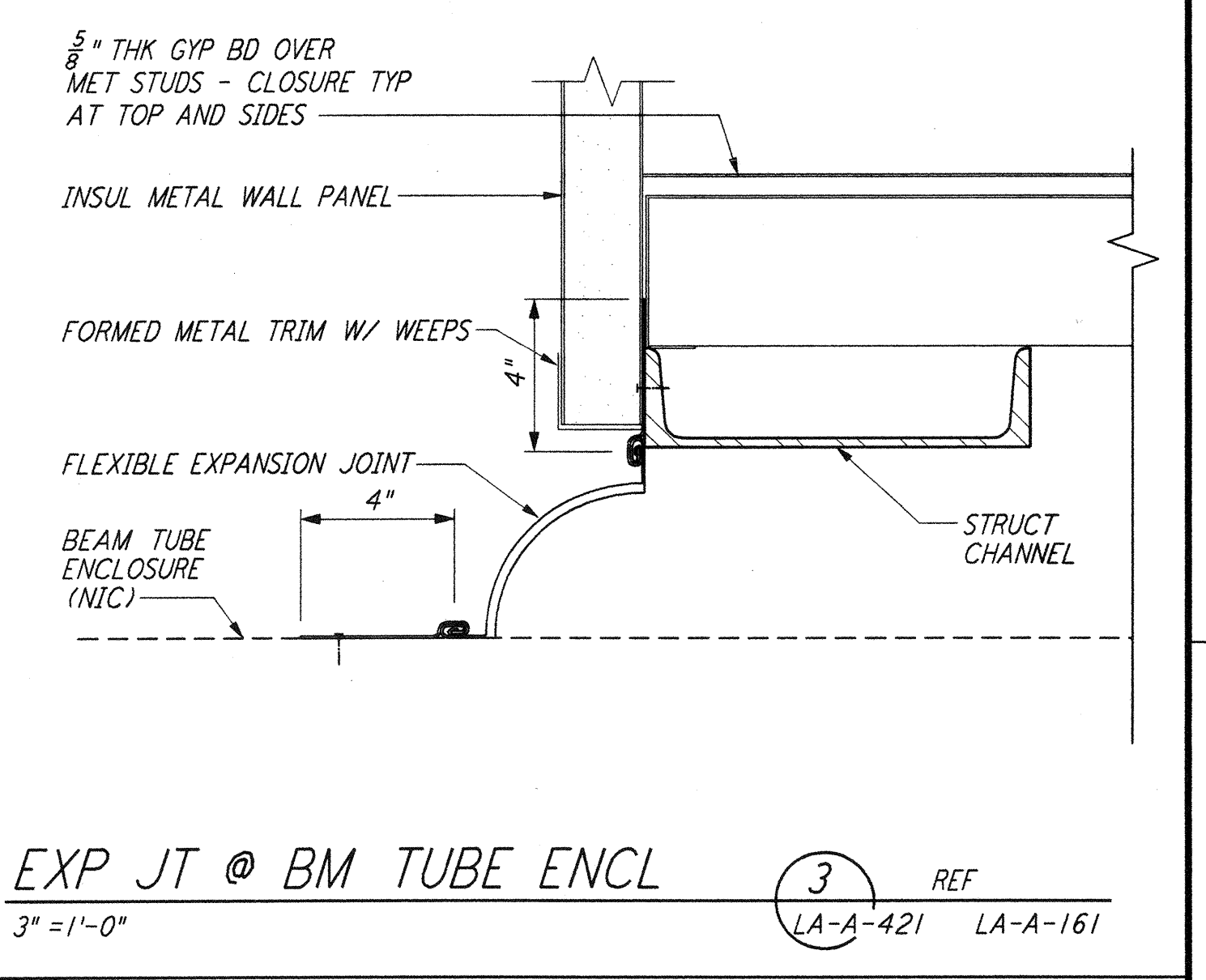
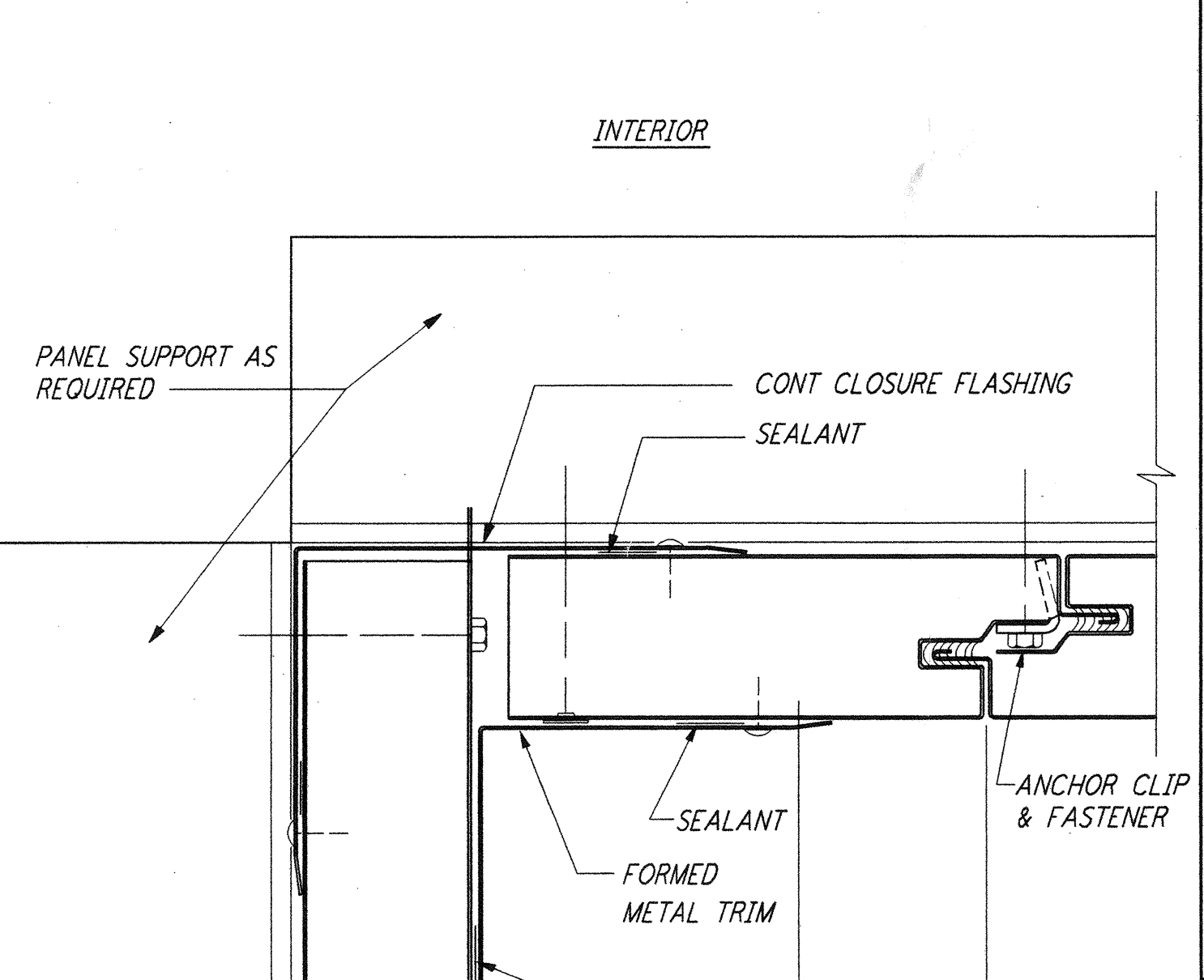
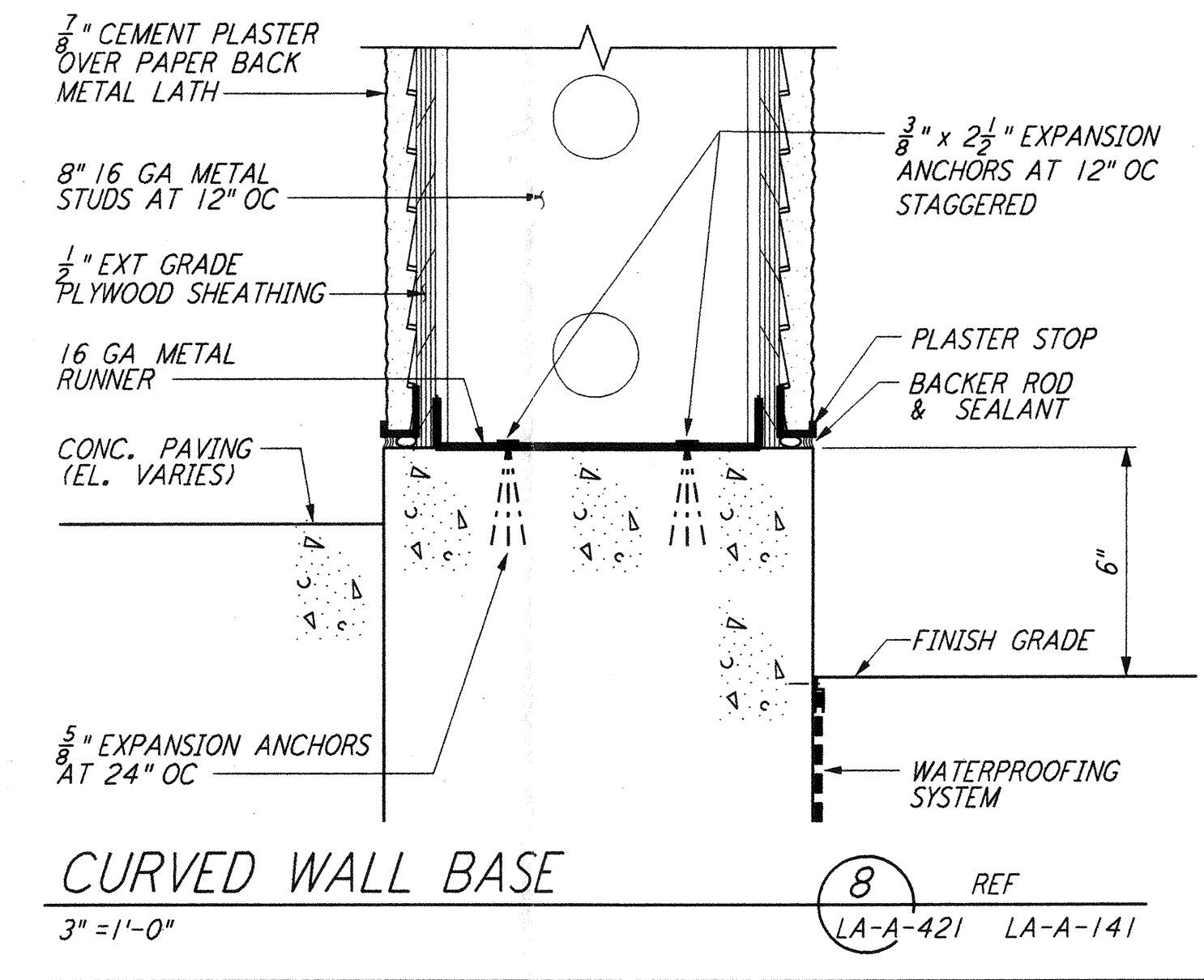
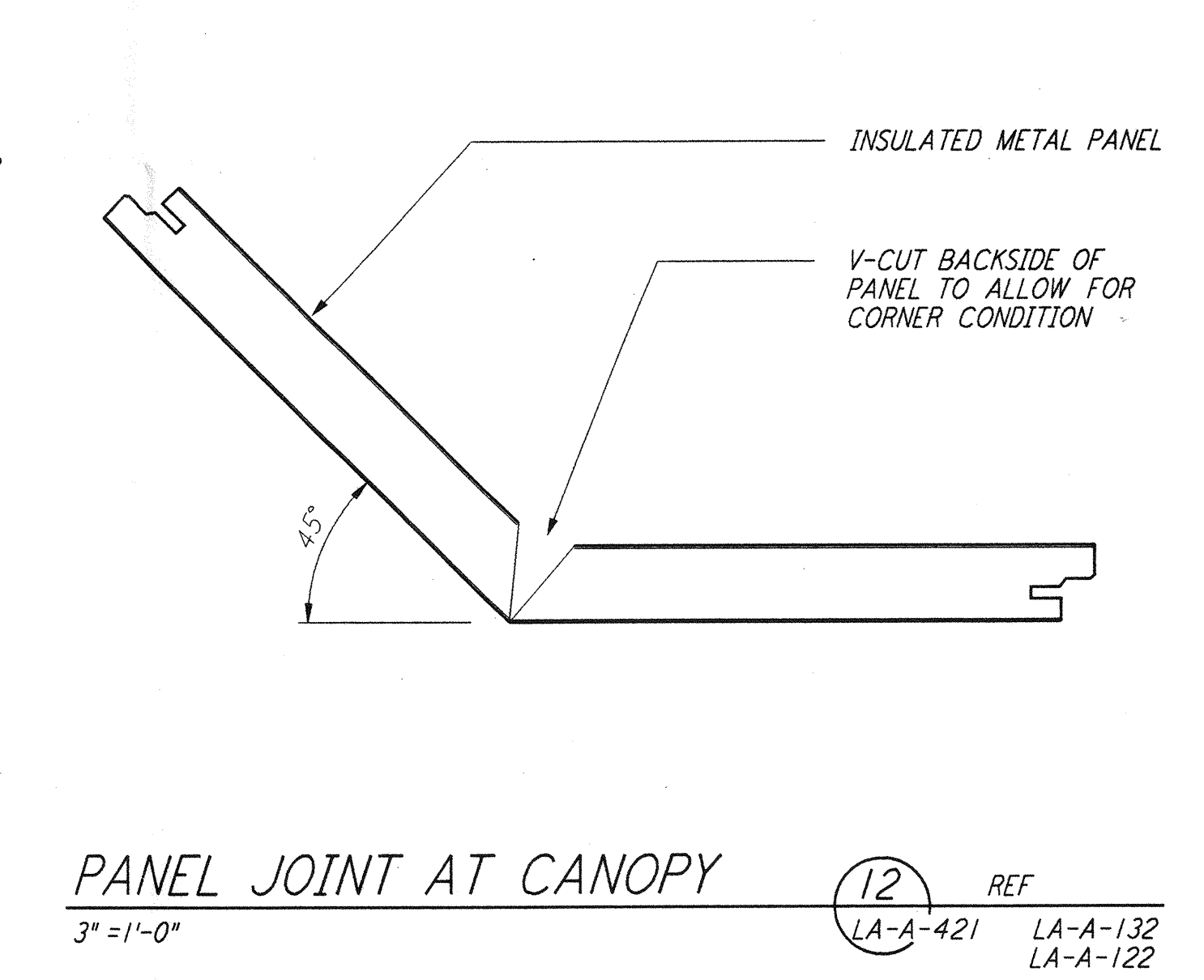
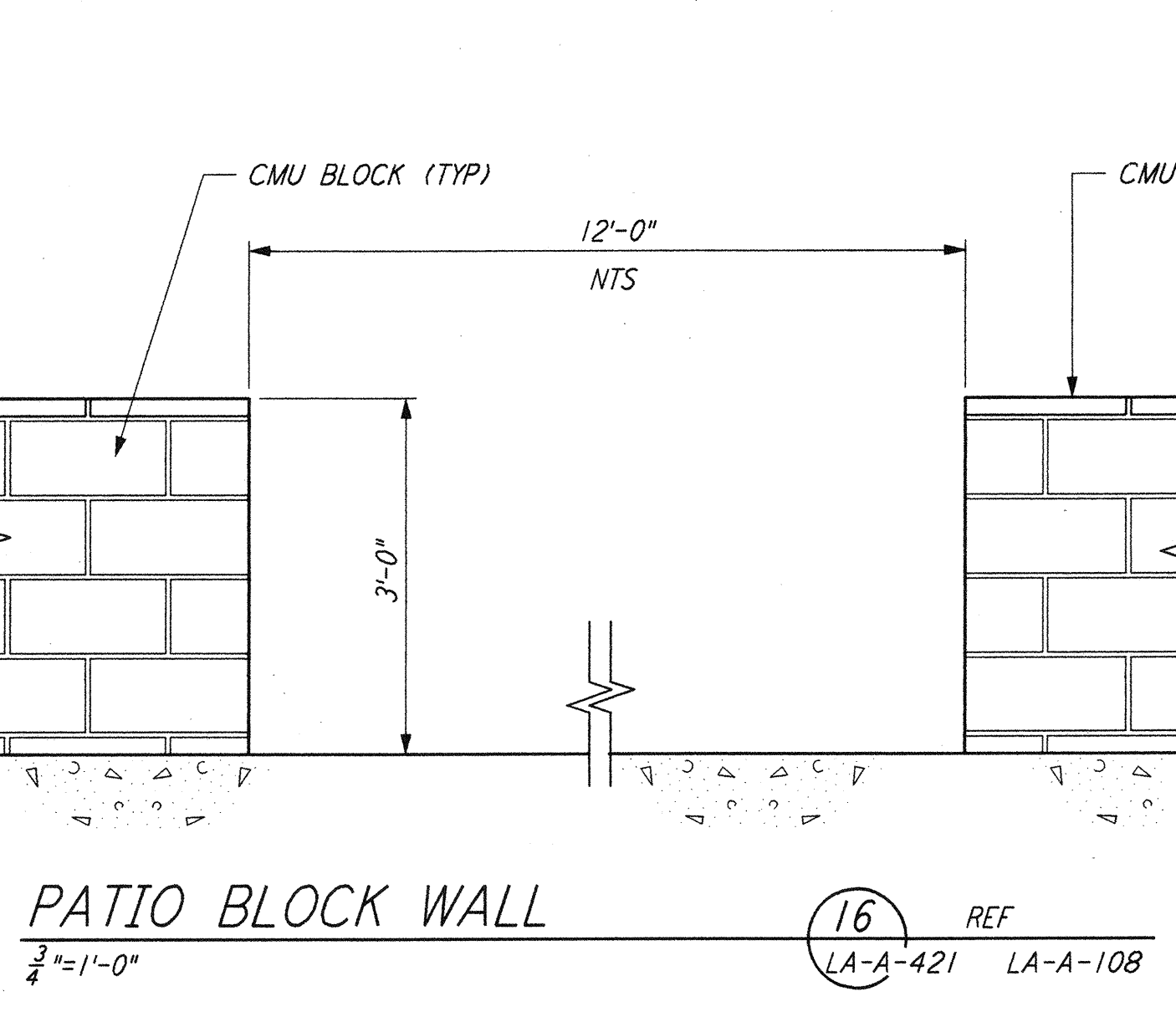
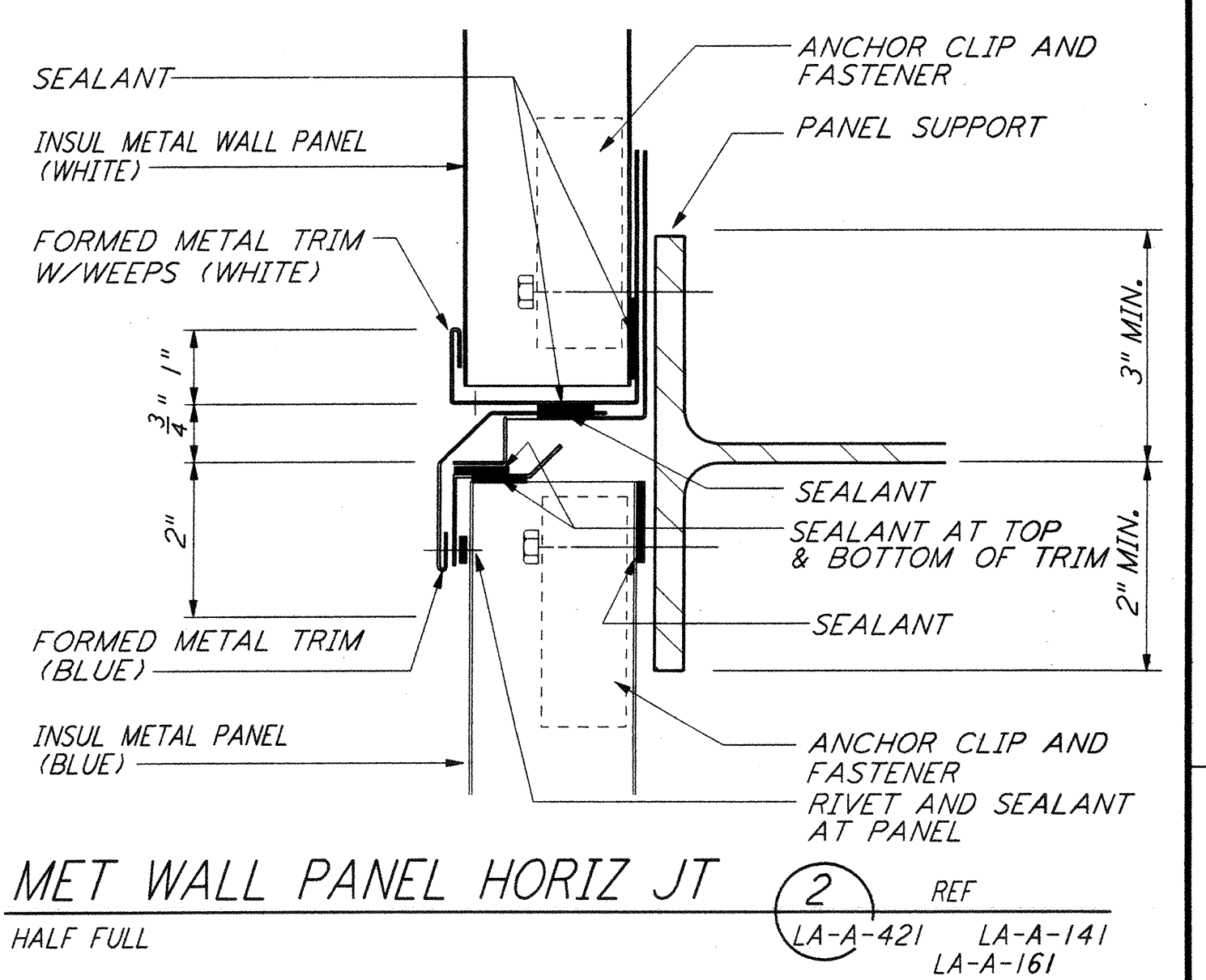
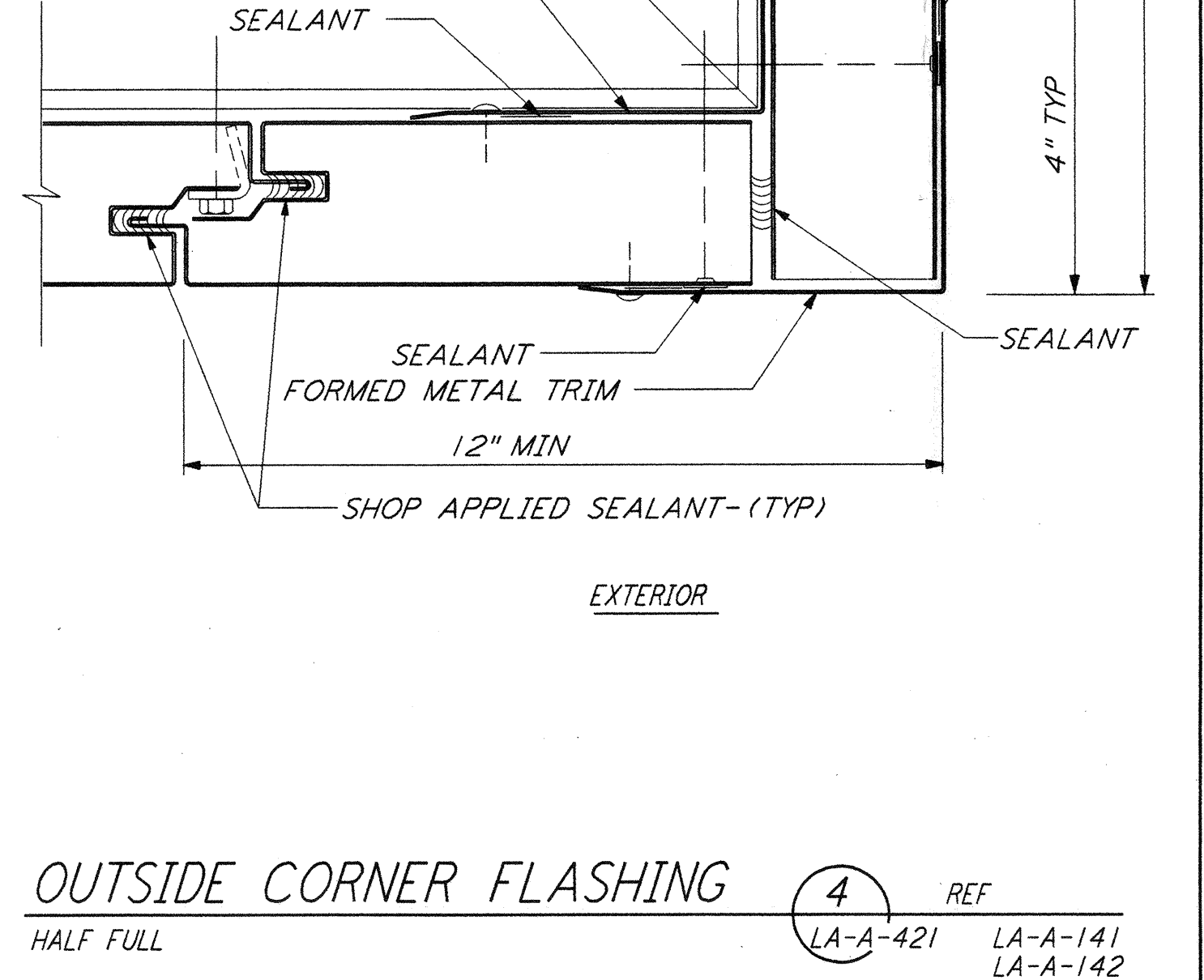
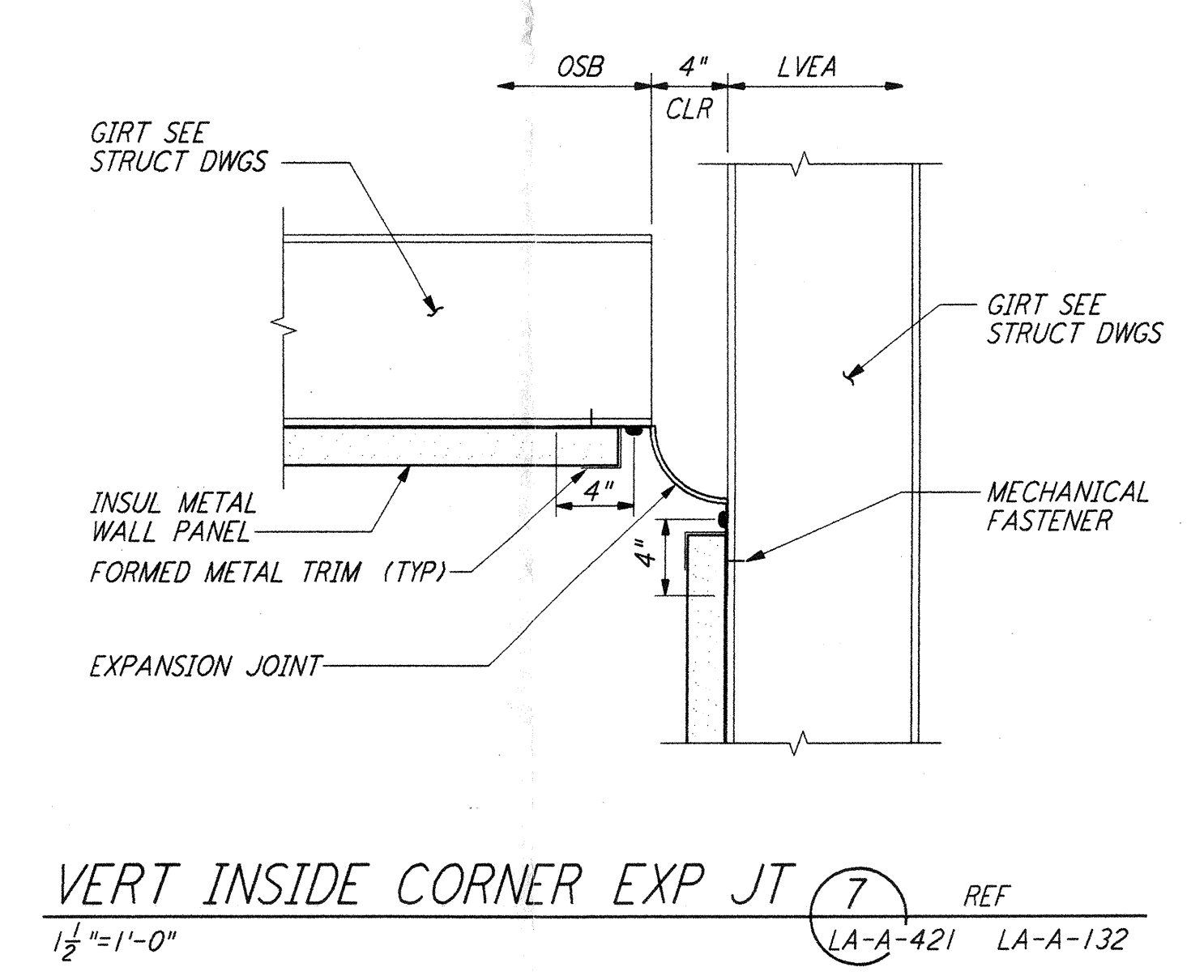
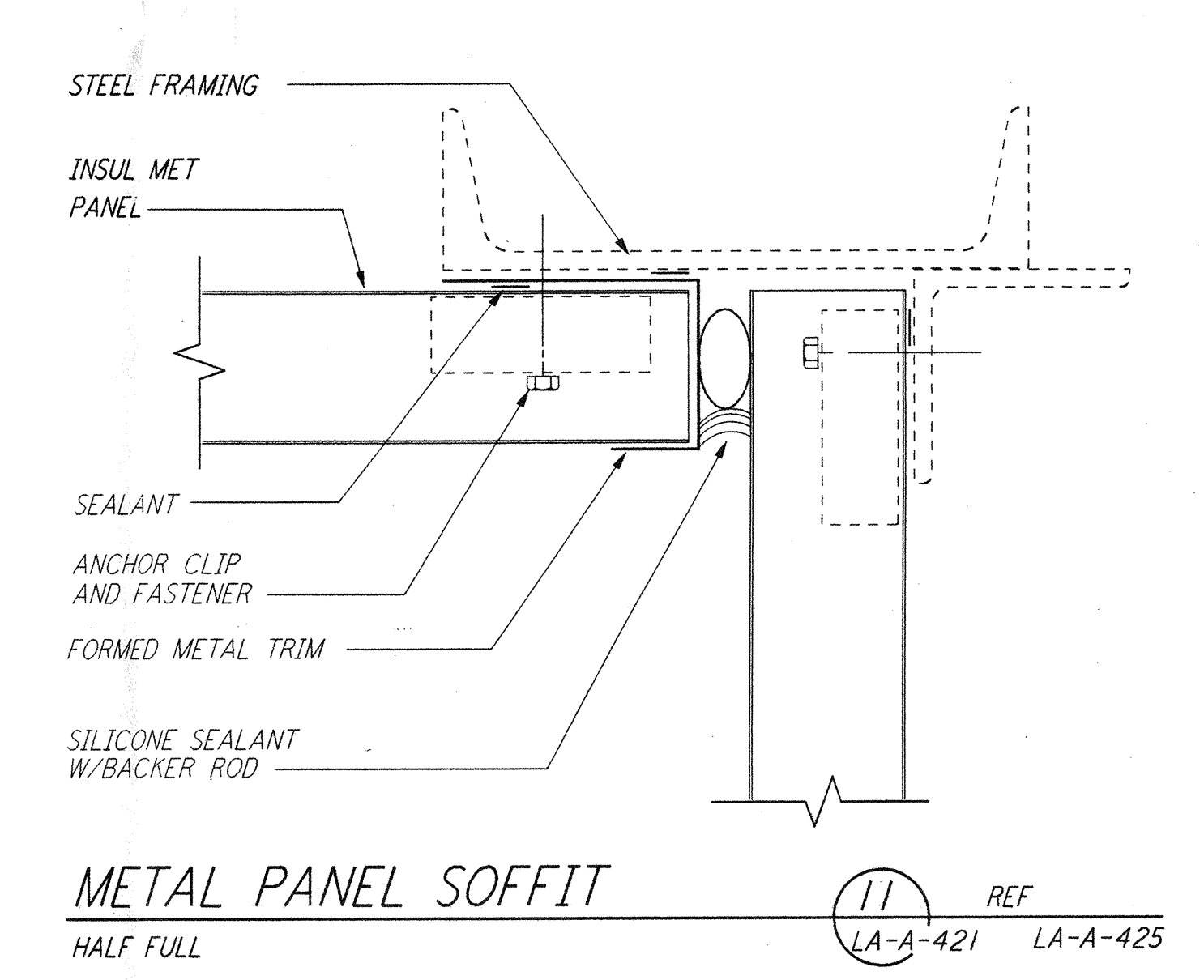
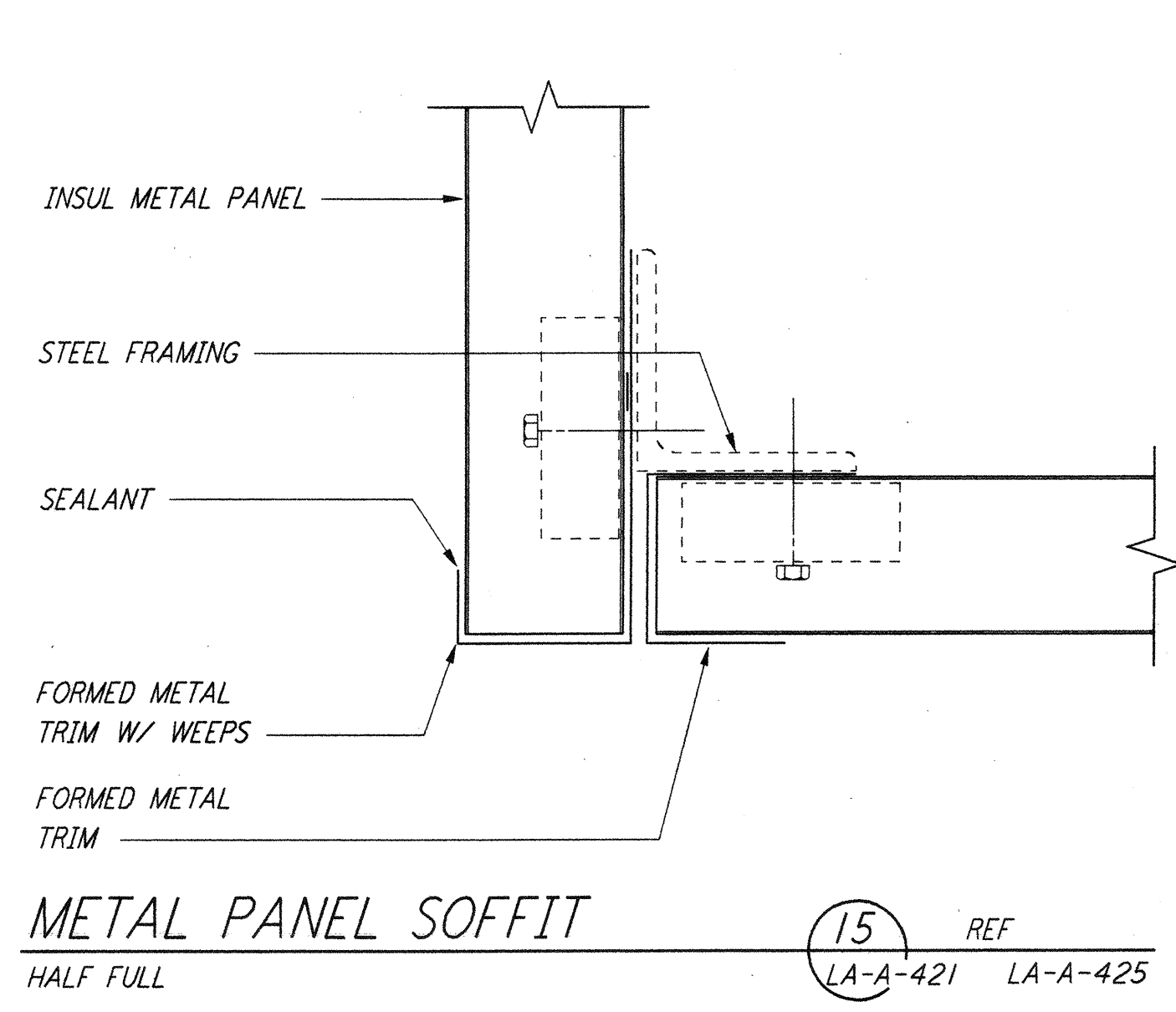
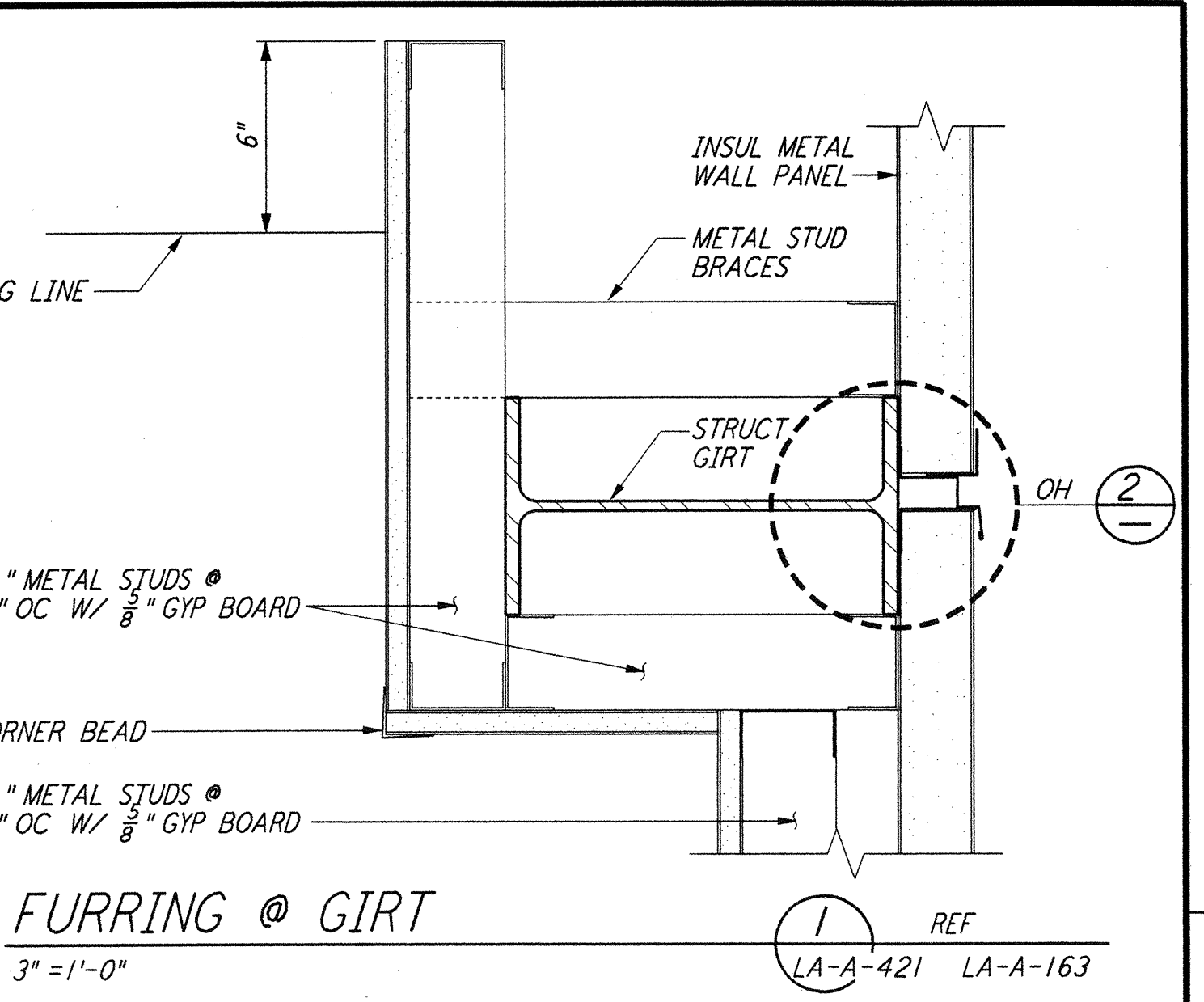
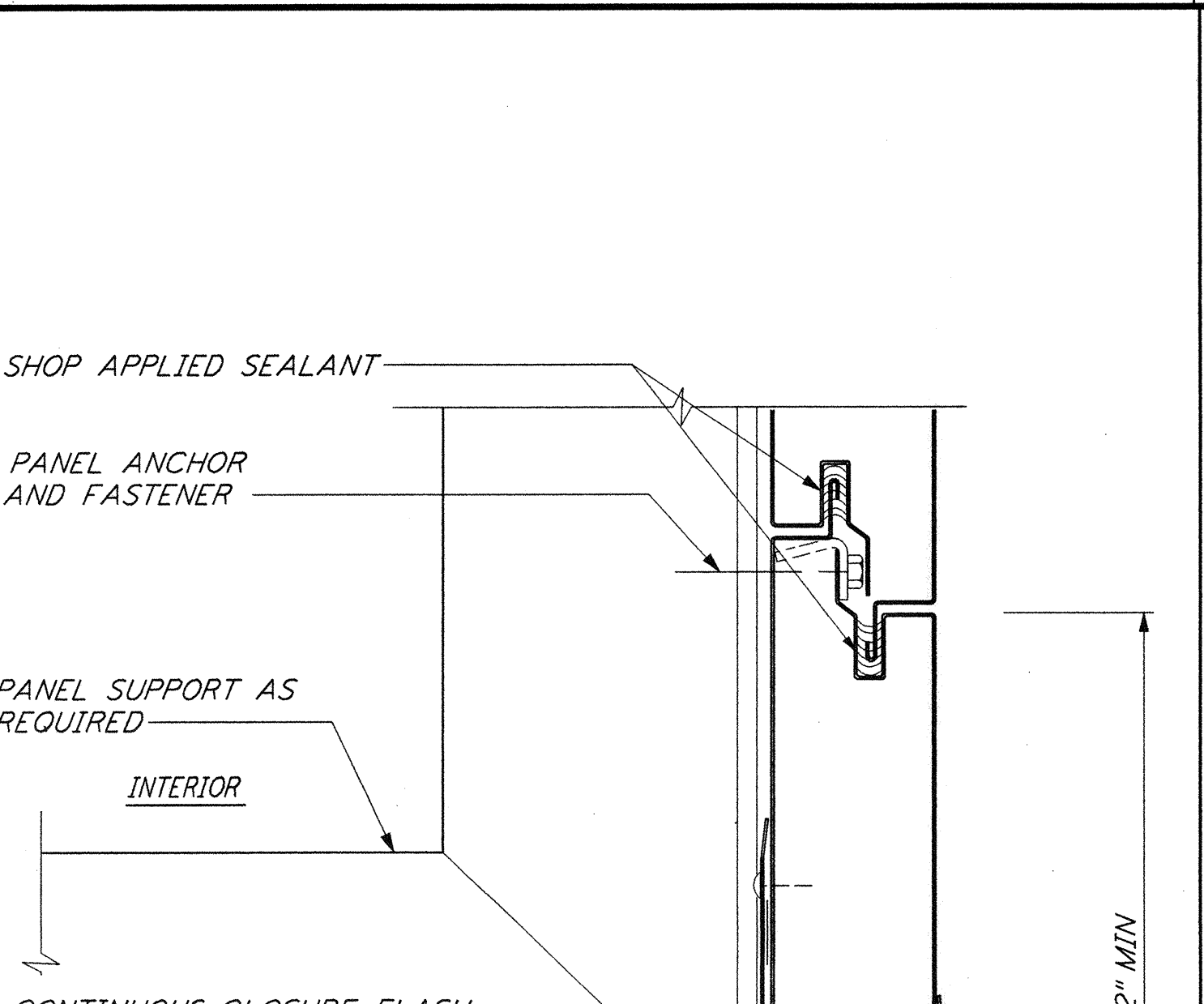
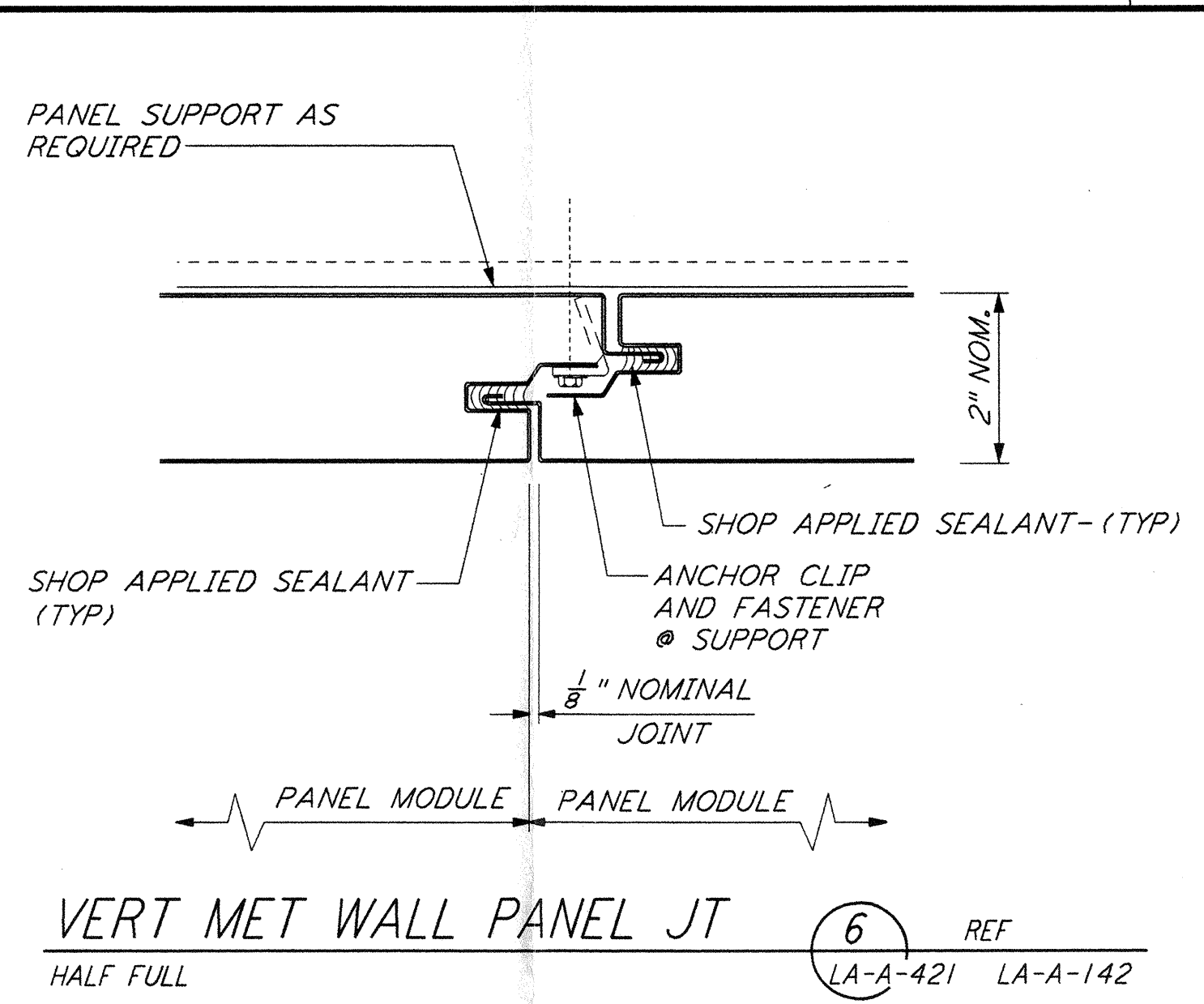
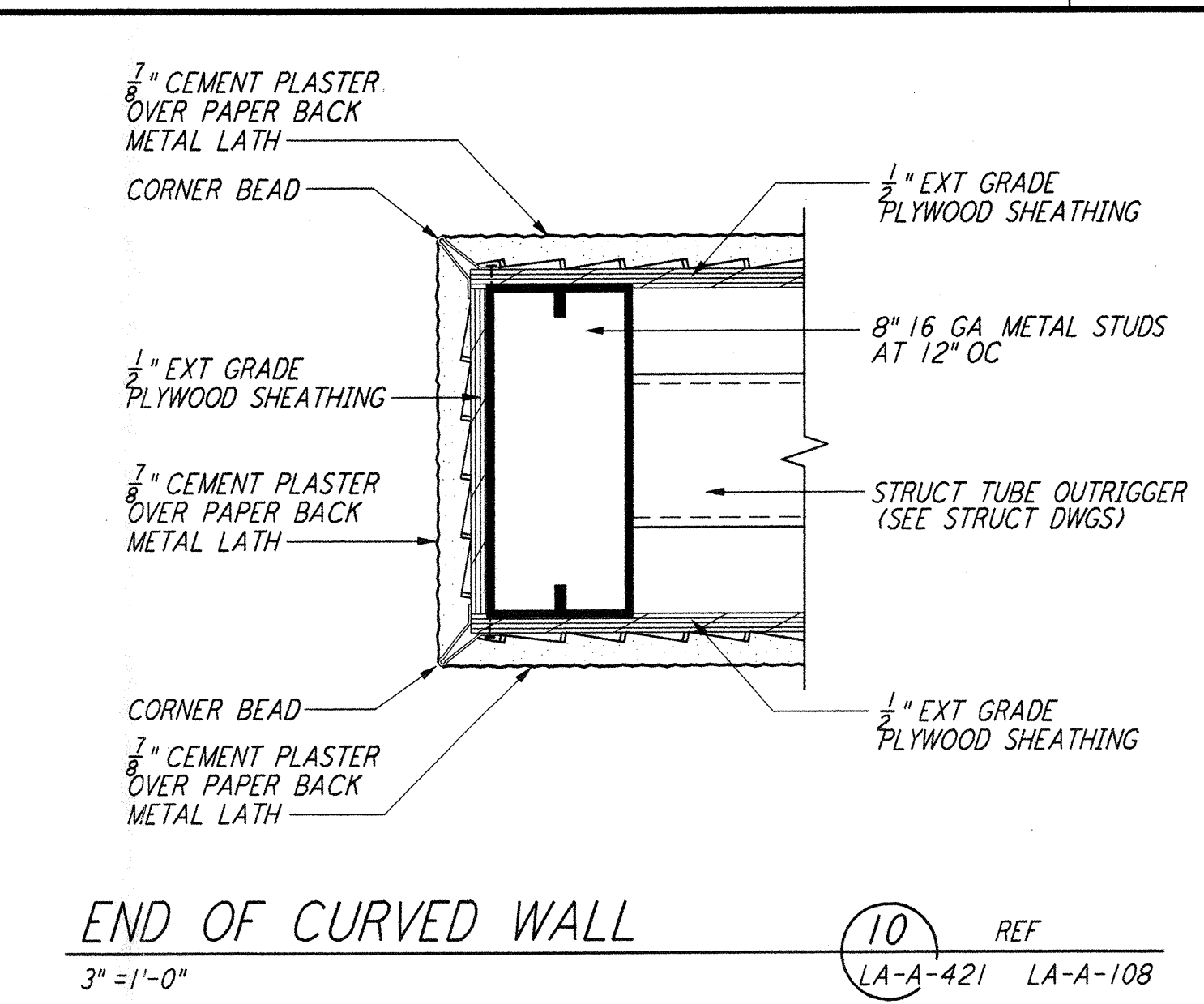
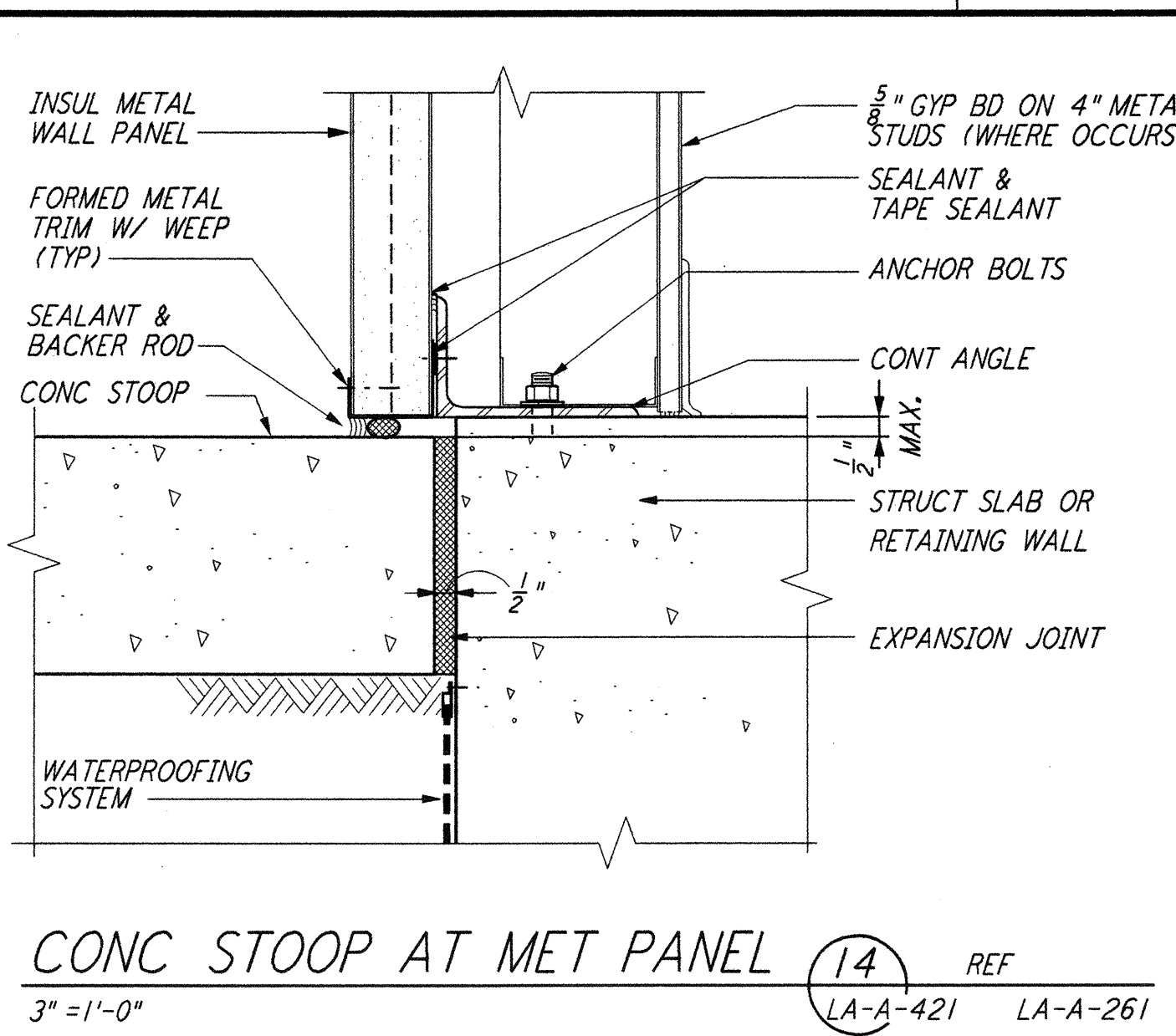


This document and the design it covers are the property of PARSONS. They are loaned only with the borrower's expressed written agreement that they will not be reproduced, copied, loaned, exhibited, or used in any other way, except by written consent from PARSONS to the borrower.



NO.	DATE	BY	CHKD	ENGR	PROJ	DESCRIPTION
1	08-07-98	SJM	CMC	MM	MM	ISSUED FOR AS-BUILT

NO.	DATE	BY	CHKD	ENGR	PROJ	DESCRIPTION
1	08-07-98	SJM	CMC	MM	MM	ISSUED FOR AS-BUILT

ISSUED FOR CONSTRUCTION	SH/RR	11-15-96
CHECKED	TB	11-15-96
ENGINEER	SF	11-15-96
PROJ	TDM	11-15-96

AS-BUILT DRAWINGS

100 WEST WALNUT STREET
PASADENA, CALIFORNIA

CALIFORNIA INSTITUTE OF TECHNOLOGY
MASSACHUSETTS INSTITUTE OF TECHNOLOGY

LASER INTERFEROMETER
GRAVITATIONAL-WAVE OBSERVATORY
SITE NO. 2 - LIVINGSTON, LOUISIANA

TITLE	SCALE	CONTRACT NUMBER	PROJECT NUMBER
ARCHITECTURAL EXTERIOR WALL DETAILS	AS NOTED	PP150969	8094
SHEET NUMBER	REVISIONS		
LA-A-421	▲		