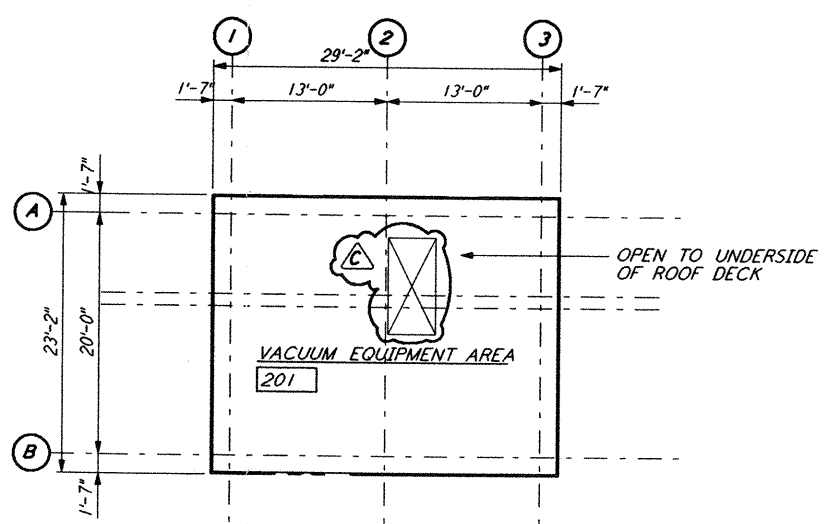
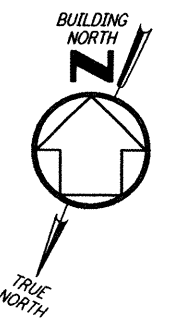
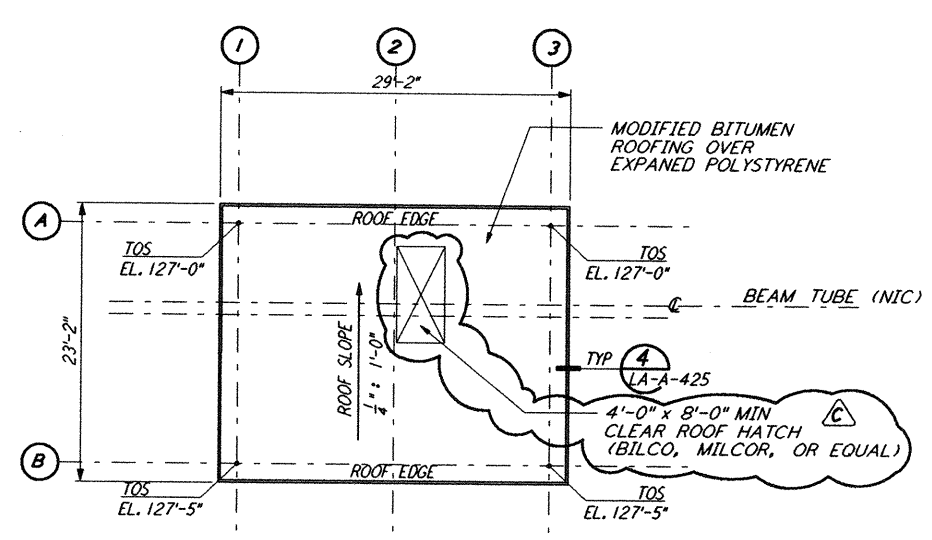


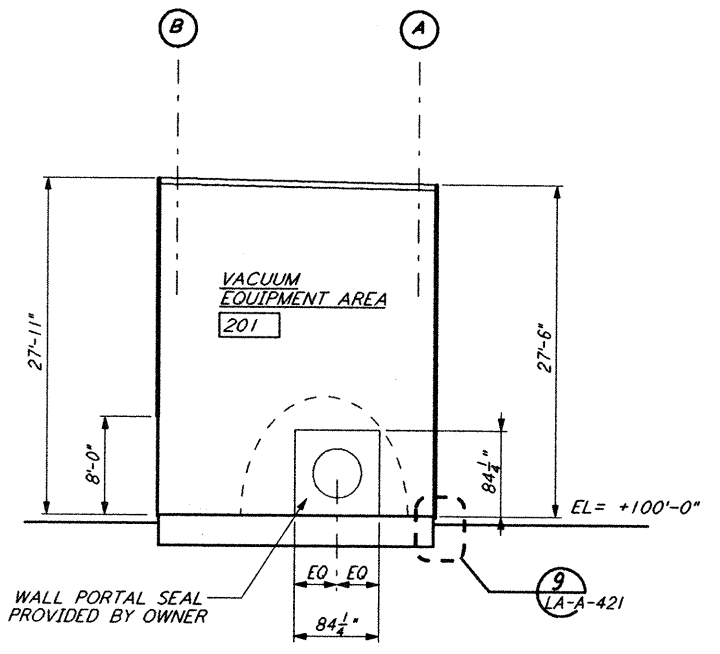
Thu Sep 12 08:20:08 1996 s3-v18b2 J:\PLOTS\SEQUENCES\18B2\VAR201A.PRF



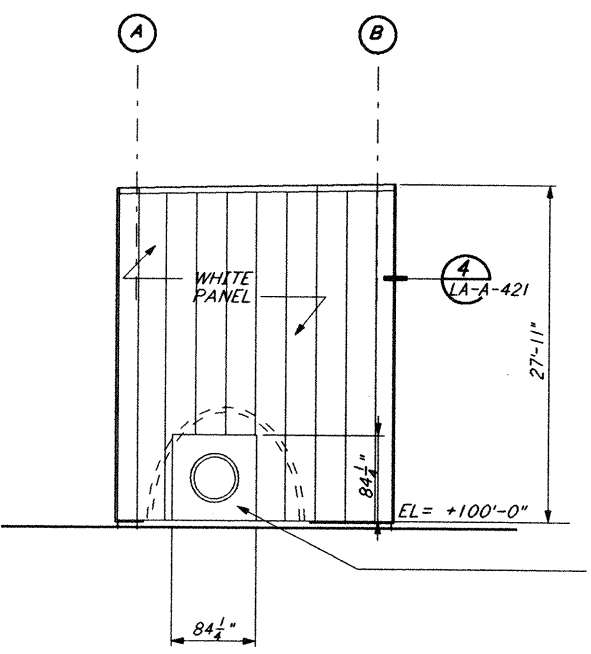
MID STATION "A" / "B" REFLECTED CEILING PLAN
 1/8" = 1'-0" (LA-A-201)



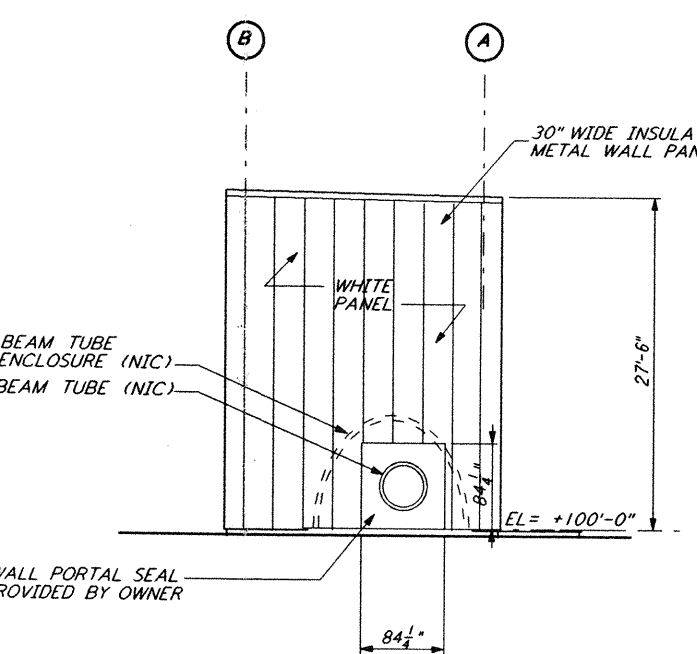
MID STATION "A" / "B" ROOF PLAN
 1/8" = 1'-0" (LA-A-201)



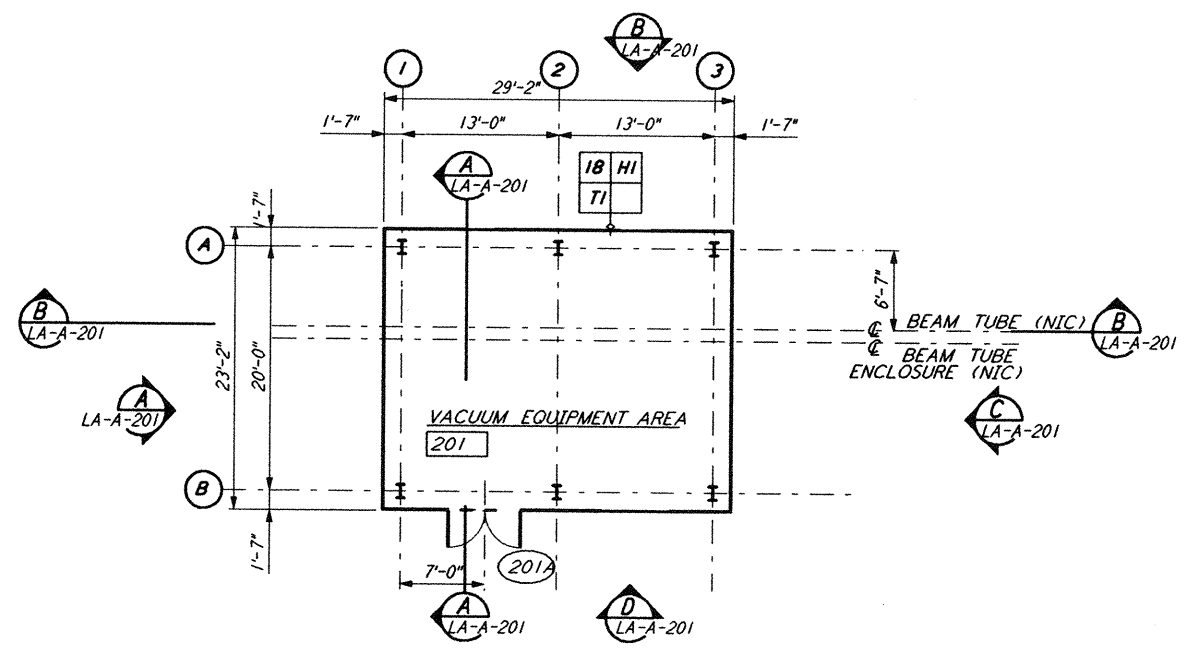
SECTION A-A
 1/8" = 1'-0" (LA-A-201)



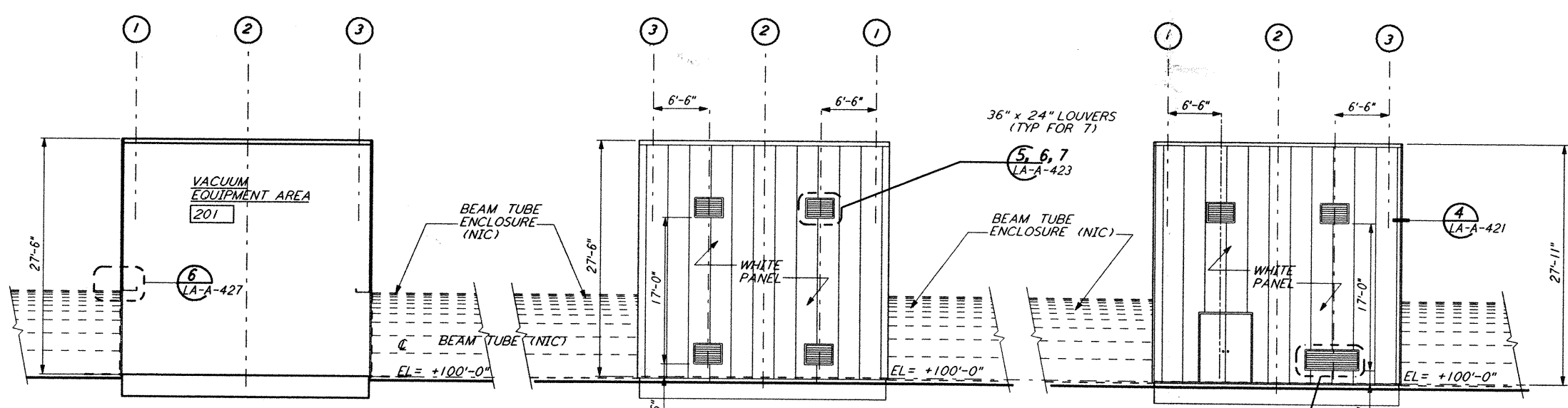
ELEVATION A-A
 1/8" = 1'-0" (LA-A-201)



ELEVATION C-C
 1/8" = 1'-0" (LA-A-201)



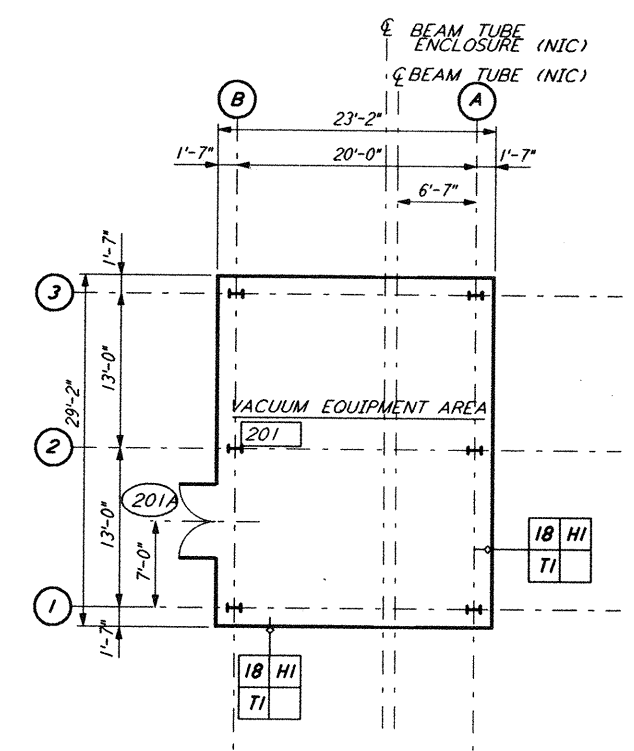
MID STATION "A" FLOOR PLAN
 1/8" = 1'-0" (LA-A-201)



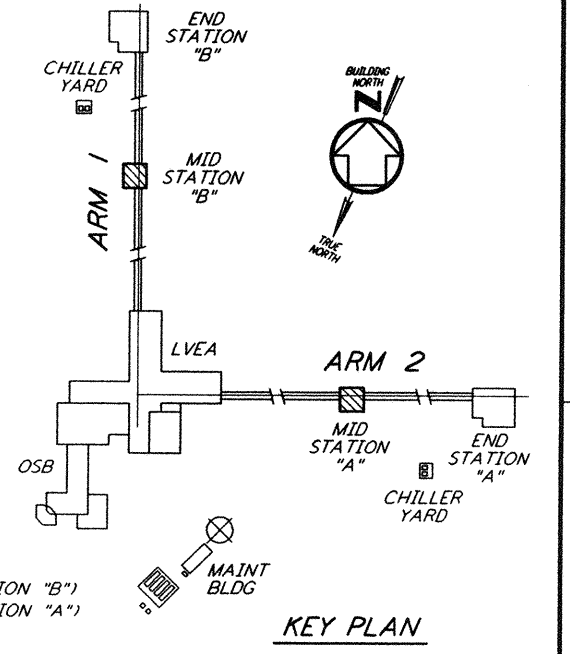
SECTION B-B
 1/8" = 1'-0" (LA-A-201)

ELEVATION B-B
 1/8" = 1'-0" (LA-A-201)

ELEVATION D-D
 1/8" = 1'-0" (LA-A-201)



MID STATION "B" FLOOR PLAN
 1/8" = 1'-0" (LA-A-201)



KEY PLAN

NO.	DATE	BY	CHKD	ENGR	PROJ	DESCRIPTION
C	9-10-96	CKT	ZJM	AK	ZJM	BID ADDENDUM #2
B	7-24-96	CKT	TB	BK	TDM	ISSUED FOR BID
A	6-14-96	CTK	BK	SF	TDMC	FINAL DESIGN REVIEW

DRAWN	CKT
CHECKED	
ENGINEER	
PROJ	

PARSONS
 100 WEST WALNUT STREET
 PASADENA, CALIFORNIA

LIGO
 CALIFORNIA INSTITUTE OF TECHNOLOGY
 MASSACHUSETTS INSTITUTE OF TECHNOLOGY

LASER INTERFEROMETER
 GRAVITATIONAL-WAVE OBSERVATORY
 SITE NO. 2 - LIVINGSTON, LOUISIANA

ARCHITECTURAL
 MID STATIONS
 PLANS/SECTIONS/ELEVATIONS

SCALE: AS NOTED
 CONTRACT NUMBER: PPI 50969
 PROJECT NUMBER: 8094

SHEET NUMBER: **LA-A-201**