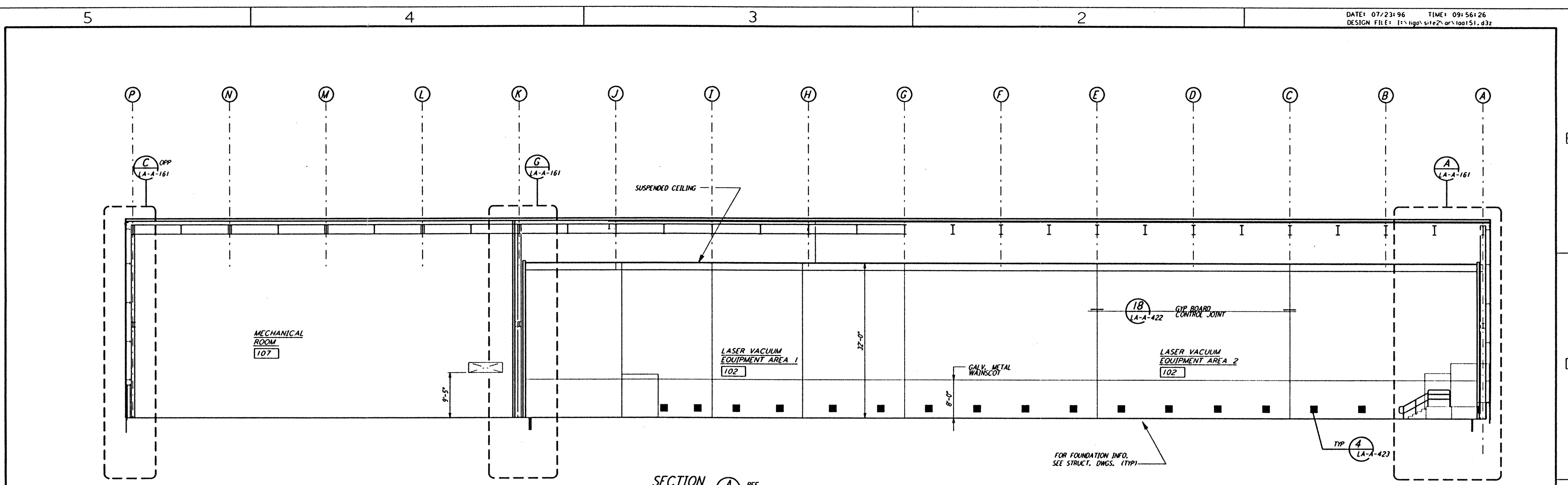
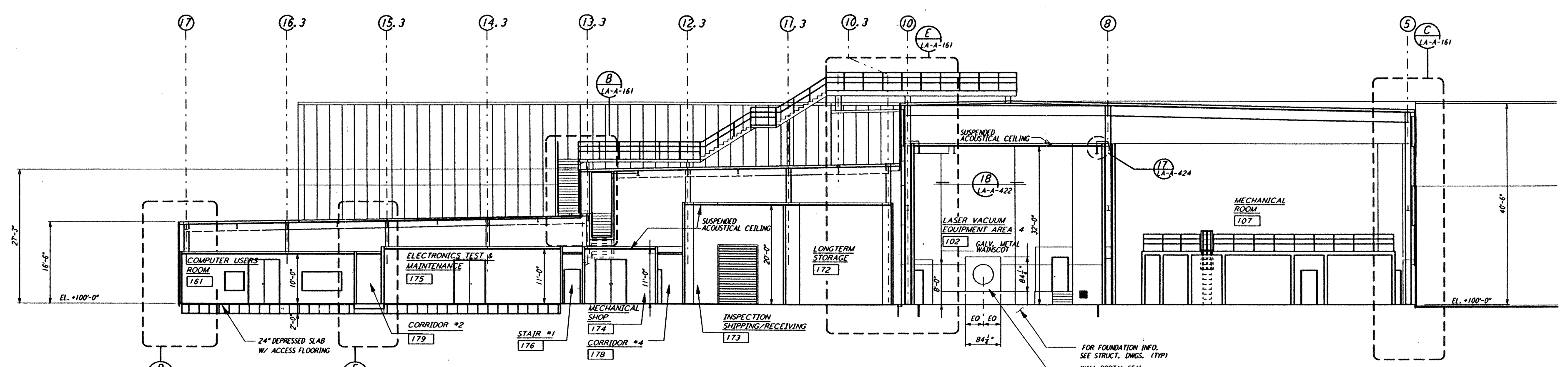


not be reproduced, copied, loaned, exhibited, or used in any other way, except by written consent from PARSONS to the borrower.

This document and the design it covers are the property of PARSONS. They are loaned only with the borrower's expressed written agreement that they will

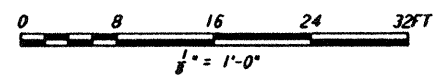


SECTION A REF
 1/8" = 1'-0"
 LA-A-151 LA-A-101 LA-A-131



SECTION B REF
 1/8" = 1'-0"
 LA-A-151 LA-A-101 LA-A-107

DATUM POINT EL +100.00 = 61.44' (LVEA)
 DATUM POINT EL +100.00 = 61.44' (OSB)



NO.	DATE	BY	CHKD	ENGR	PROJ	DESCRIPTION
C	7-24-96	CKT	TB	BK	TDM	ISSUED FOR BID
B	6-14-96	CKT	BK	SF	TDM	FINAL DESIGN REVIEW
A	10/31/95	SF	SF	TDM		PRELIMINARY DESIGN REVIEW

DRAWN	CKT/DS
CHECKED	
ENGINEER	
PROJ	

PARSONS
 100 WEST WALNUT STREET
 PASADENA, CALIFORNIA

LIGO
 CALIFORNIA INSTITUTE OF TECHNOLOGY
 MASSACHUSETTS INSTITUTE OF TECHNOLOGY

LASER INTERFEROMETER
 GRAVITATIONAL-WAVE OBSERVATORY
 SITE NO.2 - LIVINGSTON, LOUISIANA

TITLE: ARCHITECTURAL CORNER STATION LVEA & OSB SECTIONS SHEET 1
 AS NOTED PPI 50969 8094
LA-A-151

LIGO-D960886-C-0 1

Tue Jul 23 09:55:43 1996 s3-v18b2 J:\PLOTS\QUEUES\18B2\AR151.PRF