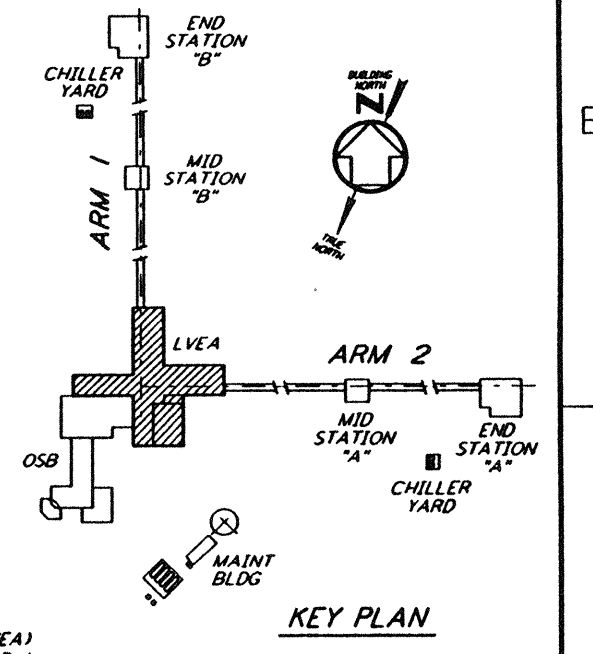
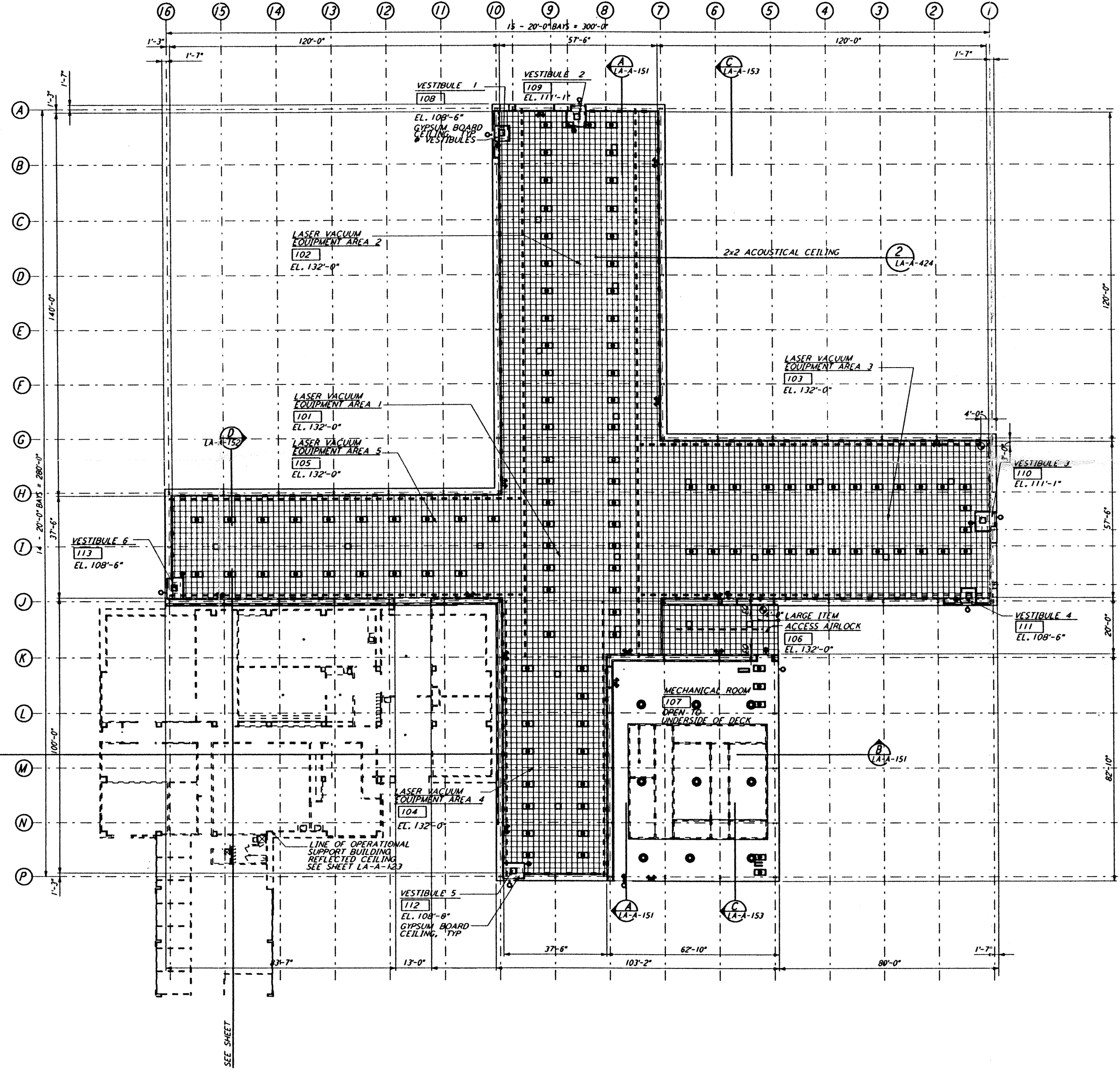
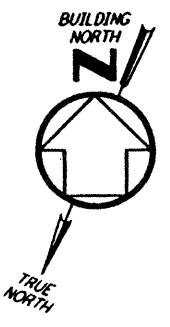


NOTE:  
 CEILING GRID TO  
 FRAME AROUND CRANE  
 SUPPORTS EVERY 20'-0" O.C. SEE 17  
 LA-A-424



0 8 16 24 32 40 48 56 64 FT  
 1" = 1'-0"  
 DATUM POINT EL +100.00 = 61.44' (LVEA)  
 DATUM POINT EL +100.00 = 61.44' (OSB)

not be reproduced, copied, loaned, exhibited, or used in any other way, except by written consent from PARSONS to the borrower.

This document and the design it covers are the property of PARSONS. They are loaned only with the borrower's expressed written agreement that they will

NO.	DATE	BY	CHKD	ENGR	PROJ	DESCRIPTION
C	7-24-96	CKT	TB	BK	TDM	ISSUED FOR BID
B	6-14-96	CKT	BK	SF	TDM	FINAL DESIGN REVIEW
A	10/31/95	SF	SF	TDM		PRELIMINARY DESIGN REVIEW

DRAWN	CKT
CHECKED	
ENGINEER	
PROJ	

**PARSONS**  
 100 WEST WALNUT STREET  
 PASADENA, CALIFORNIA

**LIGO**  
 CALIFORNIA INSTITUTE OF TECHNOLOGY  
 MASSACHUSETTS INSTITUTE OF TECHNOLOGY

**LASER INTERFEROMETER  
 GRAVITATIONAL-WAVE OBSERVATORY  
 SITE NO. 2 -- LIVINGSTON, LOUISIANA**

ARCHITECTURAL CORNER STATION  
 LVEA REFLECTED CEILING PLAN

AS NOTED PPI50969 8094  
**LA-A-121**

LIGO-D960878-C-0

Tue Jul 23 09:30:27 1996 s3-v18b2 J:\PLOTS\QUEUES\V18B2\AR121.PRF