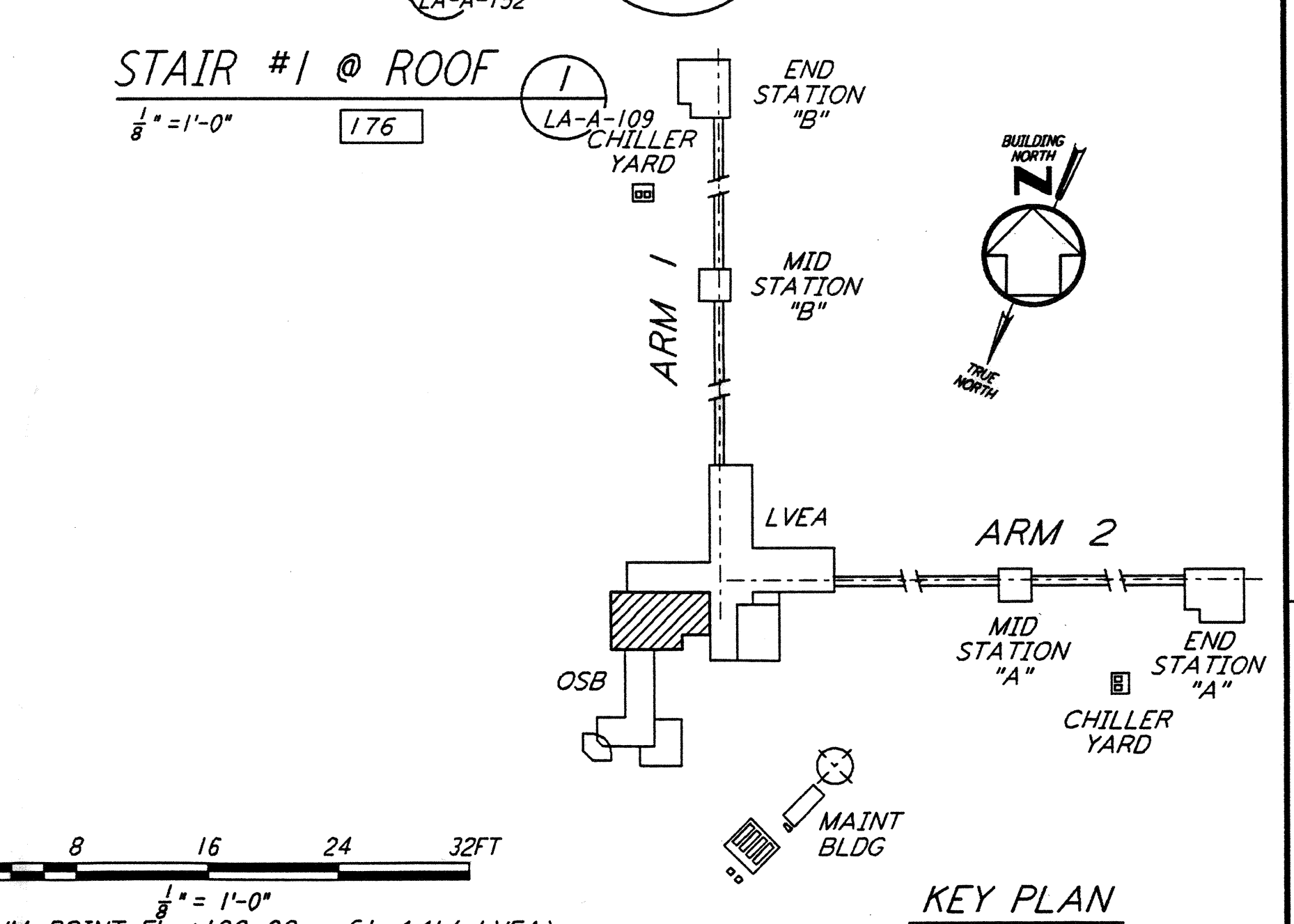
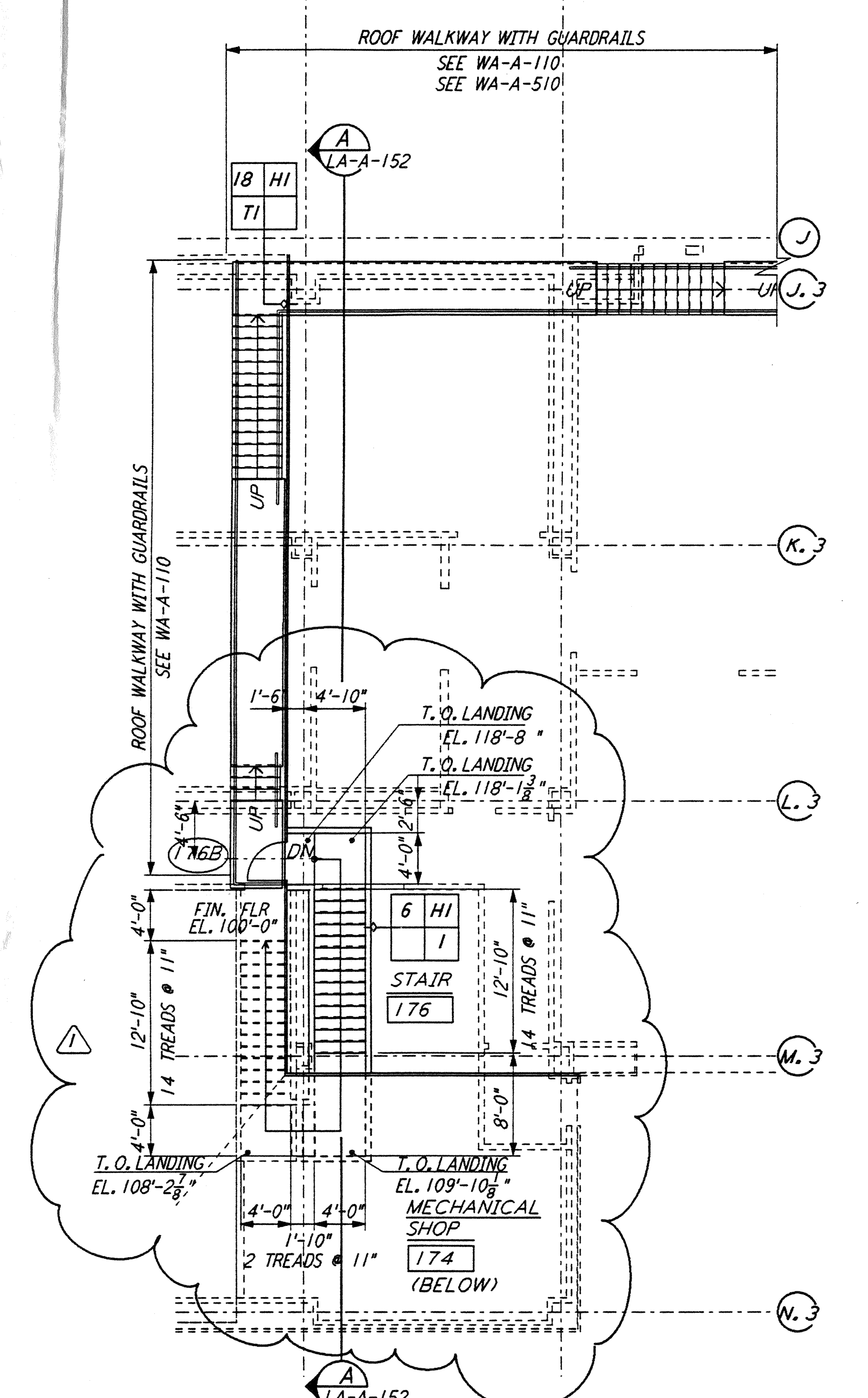
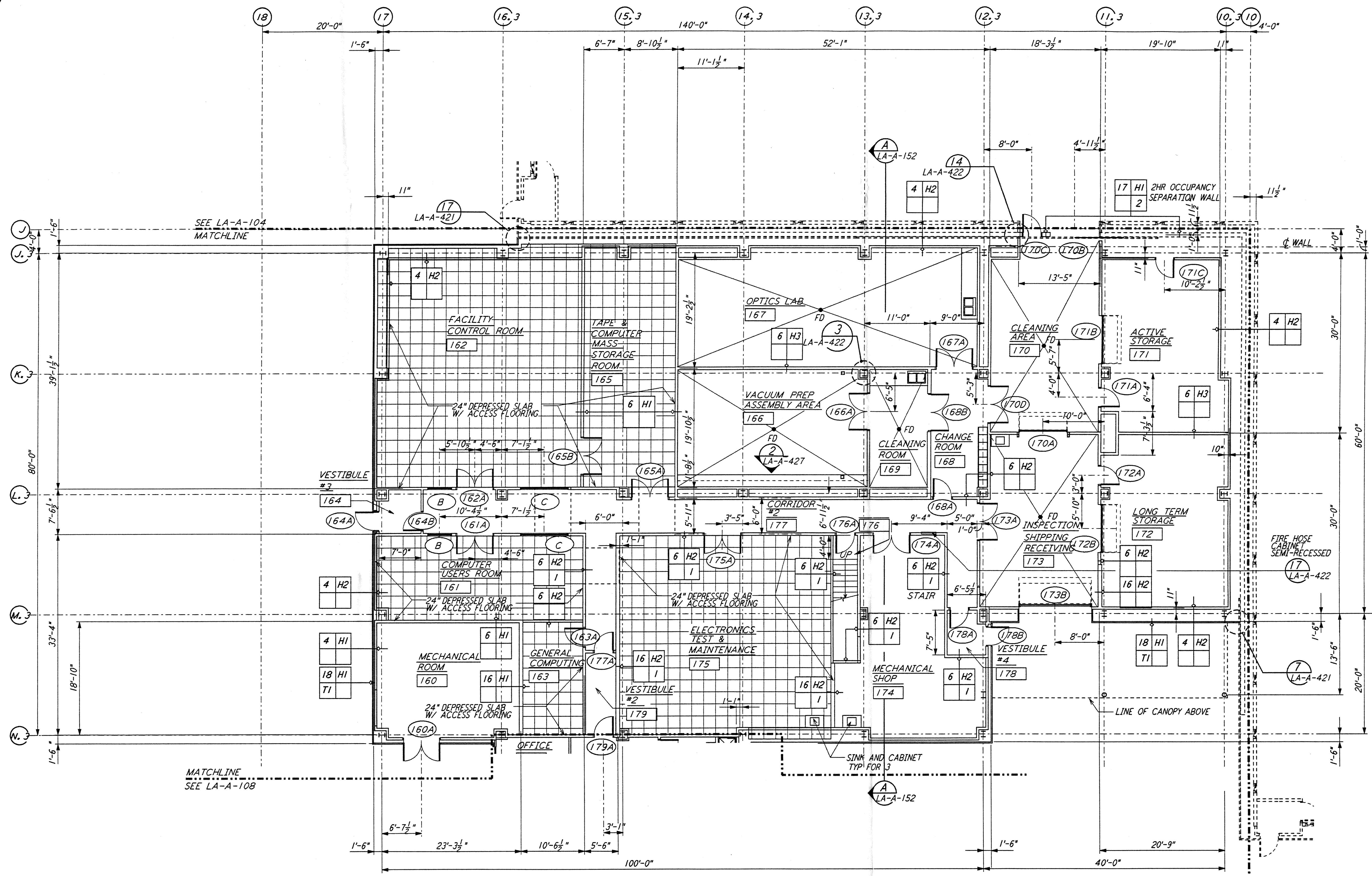
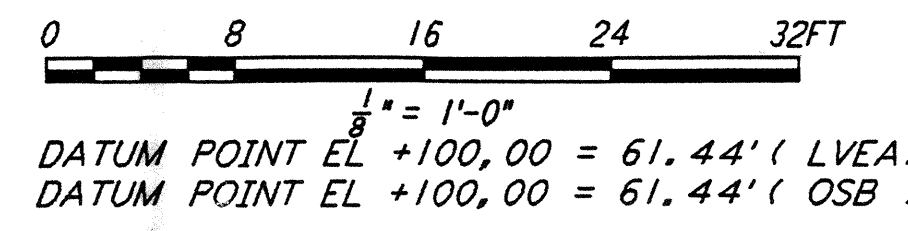


NOTE: SEE SPECIFICATIONS FOR ADDITIONAL INFORMATION AND SCHEDULES

This document and the design it covers are the property of PARSONS. They are loaned only with the borrower's expressed written agreement that they will not be reproduced, copied, loaned, exhibited, or used in any other way, except by written consent from PARSONS to the borrower.



LIGO-D960874-01-0



KEY PLAN

NO.	DATE	BY	CHKD	ENGR	PROJ	OSB REVISION	DESCRIPTION
1	2-28-97	CKT	TB	AK	TDM	OSB	REVISION

ISSUED FOR CONSTRUCTION		
DRAWN	CKT	11-15-96
CHECKED	TB	11-15-96
ENGINEER	SF	11-15-96
PROJ	MDW	11-15-96



PARSONS
 100 WEST WALNUT STREET
 PASADENA, CALIFORNIA

LIGO
 CALIFORNIA INSTITUTE OF TECHNOLOGY
 MASSACHUSETTS INSTITUTE OF TECHNOLOGY

LASER INTERFEROMETER
 GRAVITATIONAL-WAVE OBSERVATORY
 SITE NO. 2 - LIVINGSTON, LOUISIANA

ARCHITECTURAL
 CORNER STATION
 OSB PARTIAL FLOOR PLAN
 SHEET 2

SCALE: AS NOTED
 CONTRACT NUMBER: PP150969
 PROJECT NUMBER: 8094

LA-A-109