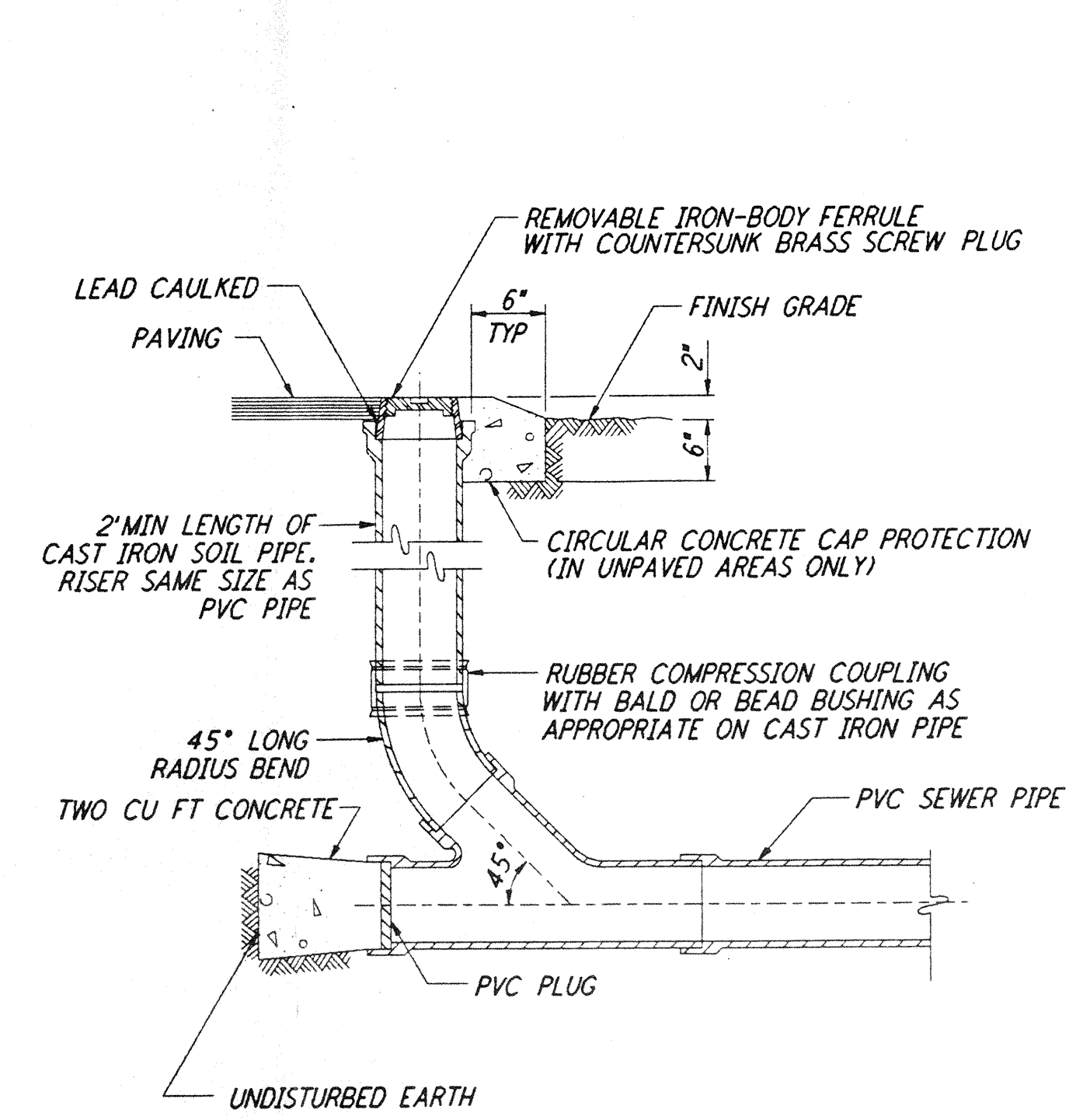
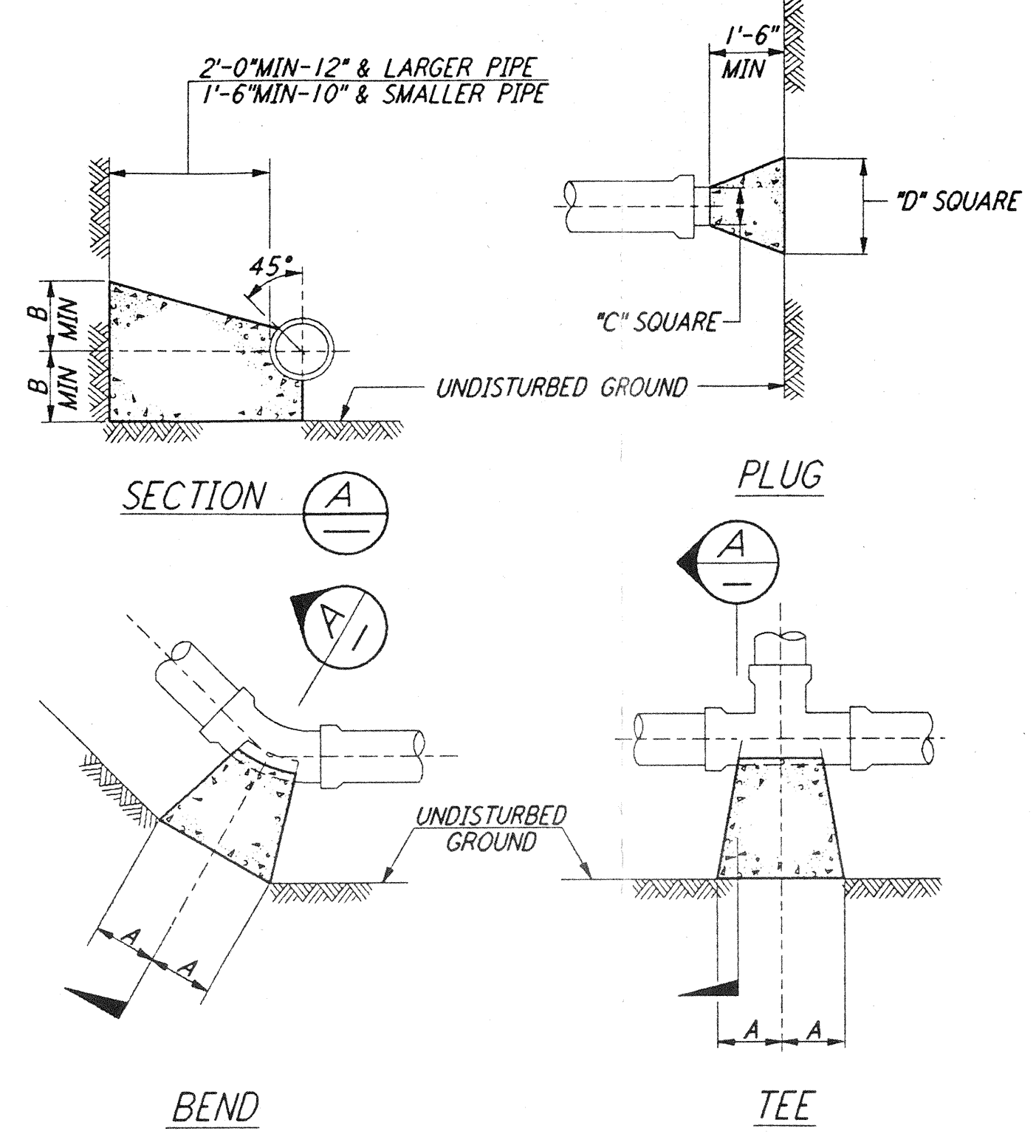


VALVE BOX (1) REF
 NOT TO SCALE LA-C-055 LA-C-009 LA-C-010
 NOTE: VALVE SIZE 12" MAXIMUM



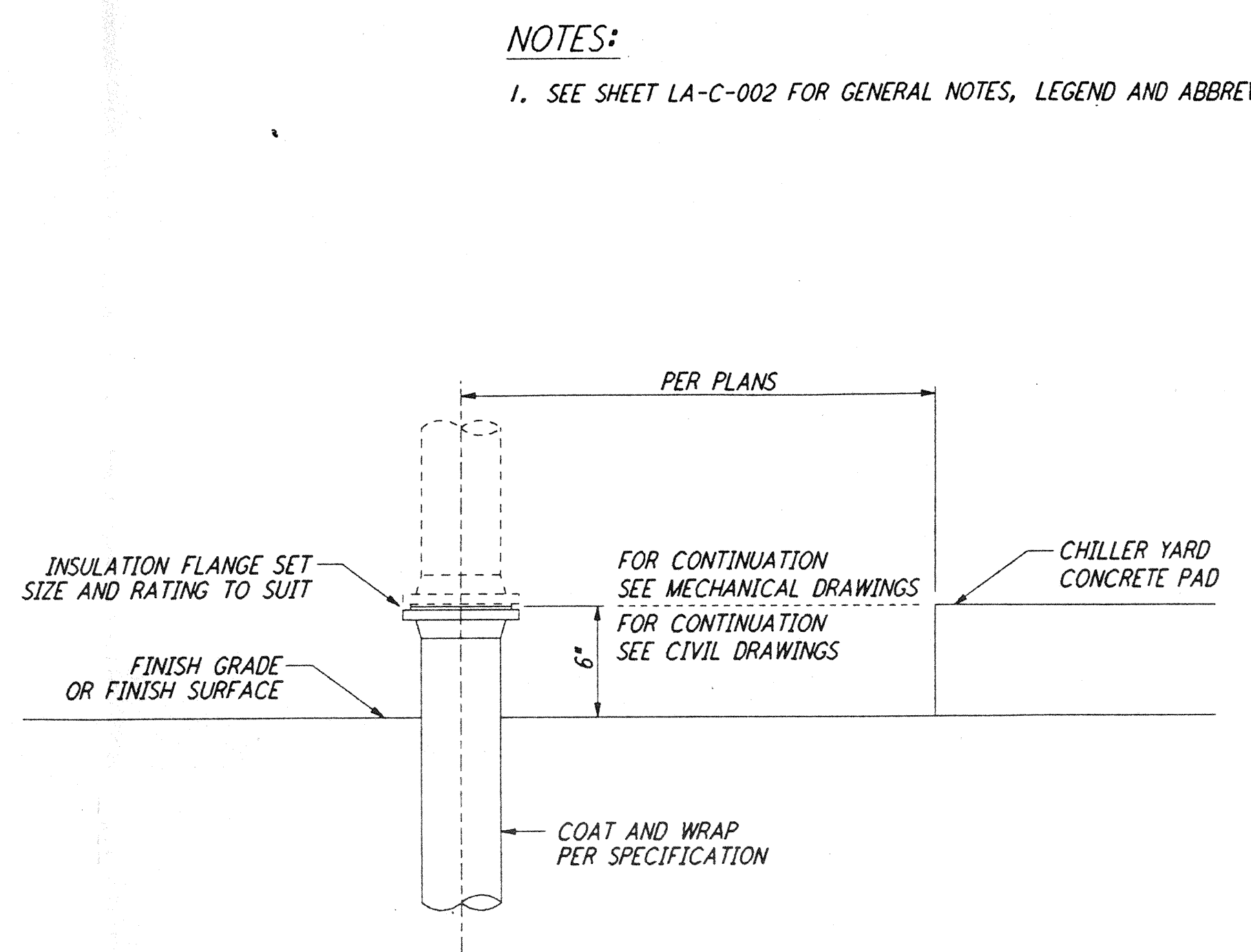
SANITARY SEWER CLEANOUT (2) REF
 NOT TO SCALE LA-C-055 LA-C-009 LA-C-010



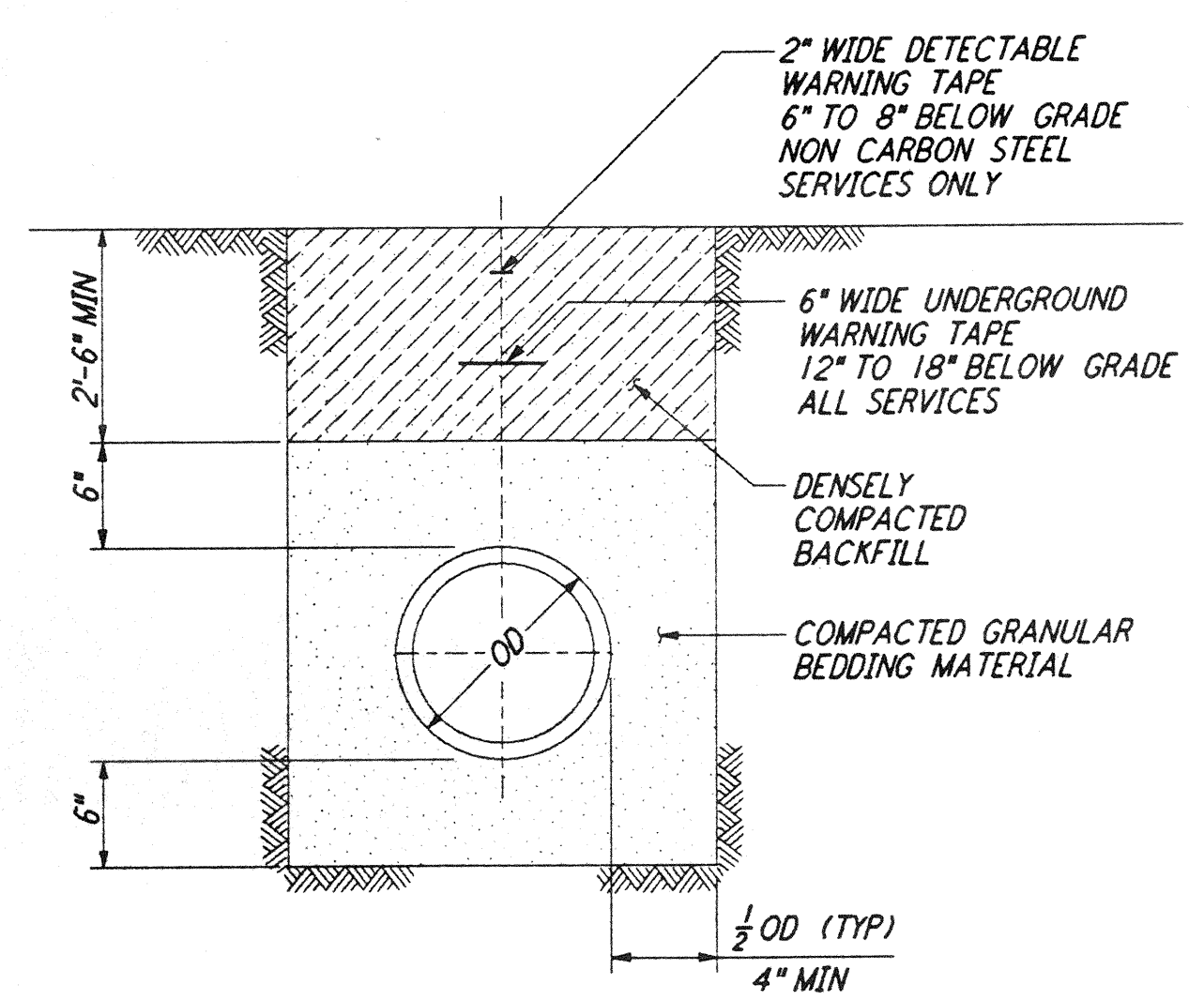
TYPE	SIZE	90° BEND		45° BEND		22½° BEND		TEE		PLUG	
		A	B	A	B	A	B	A	B	C	D
TYPE I 4000 PSF FILL	4"	6"	8"	4"	6"	3"	6"	6"	6"	8"	13"
	6"	8"	10"	6"	8"	5"	8"	8"	8"	10"	15"
	8"	12"	12"	8"	10"	5"	9"	9"	12"	12"	20"
	10"	16"	14"	10"	12"	6"	10"	11"	14"	14"	25"
	12"	19"	16"	12"	14"	8"	11"	14"	16"	16"	30"
14"	23"	18"	14"	16"	10"	12"	16"	18"	18"	34"	
TYPE II 2000 PSF FILL	4"	14"	8"	7"	8"	4"	6"	8"	10"	8"	19"
	6"	16"	10"	9"	10"	6"	8"	10"	12"	10"	21"
	8"	22"	13"	12"	13"	8"	10"	13"	16"	12"	20"
	10"	26"	17"	14"	17"	10"	13"	16"	20"	14"	36"
	12"	29"	21"	16"	21"	11"	16"	18"	24"	16"	41"
14"	35"	24"	19"	24"	12"	20"	22"	27"	18"	48"	

NOTES:
 1. BASED ON 150 PSI STATIC PRESSURE PLUS AWWA WATER HAMMER.
 2. ALL OTHER CONDITIONS MUST BE CALCULATED.

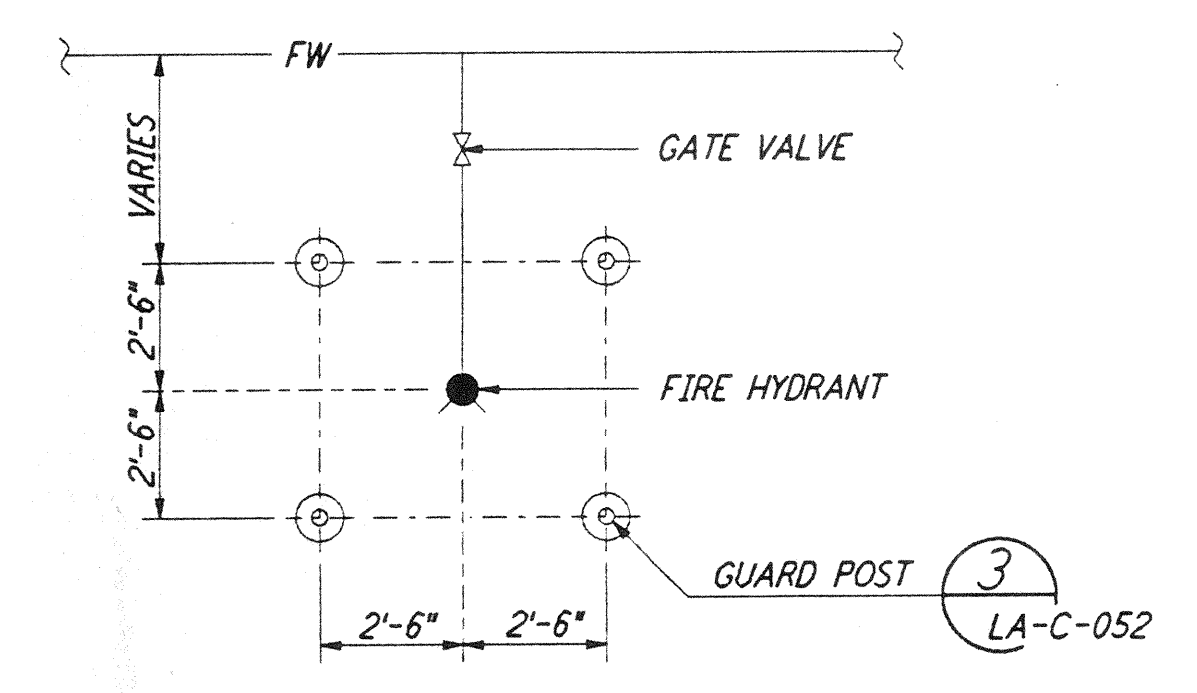
THRUST BLOCK (3) REF
 NOT TO SCALE LA-C-055 LA-C-009 LA-C-010



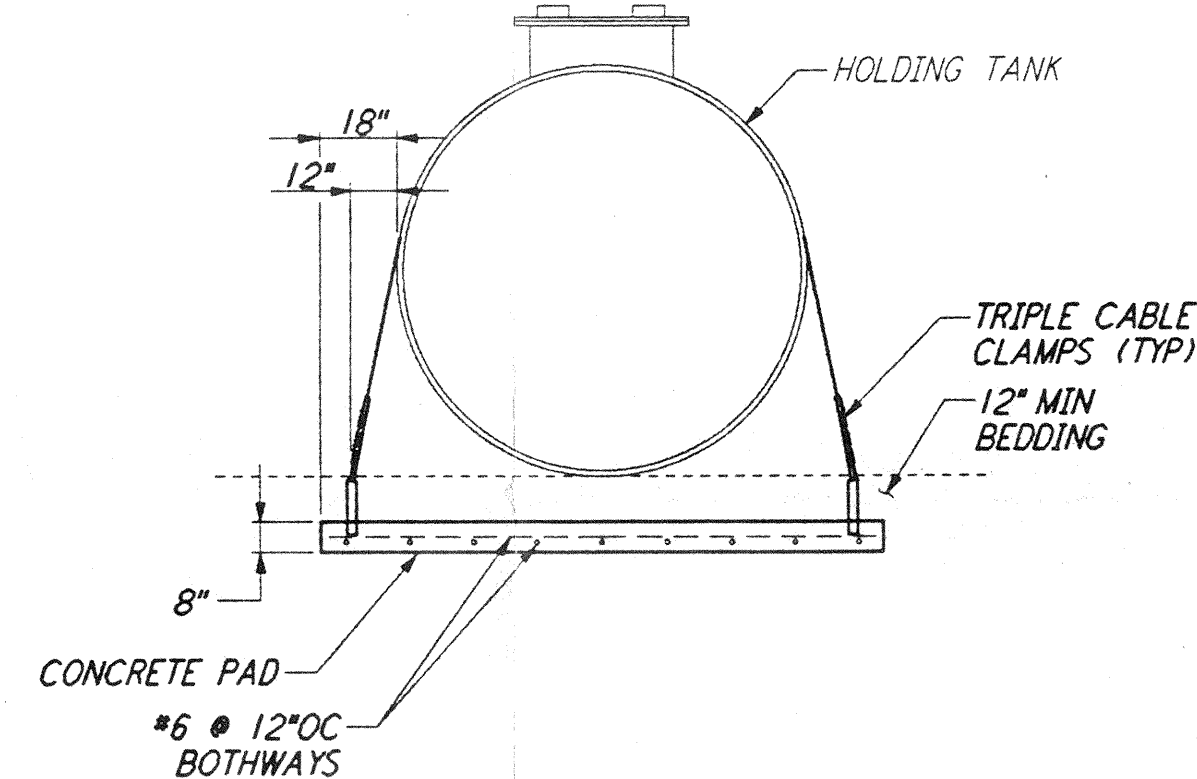
PIPE CONNECTION (4) REF
 (UNDERGROUND TO OVERHEAD) NOT TO SCALE LA-C-055 LA-C-009 LA-C-010 LA-C-027 LA-C-047



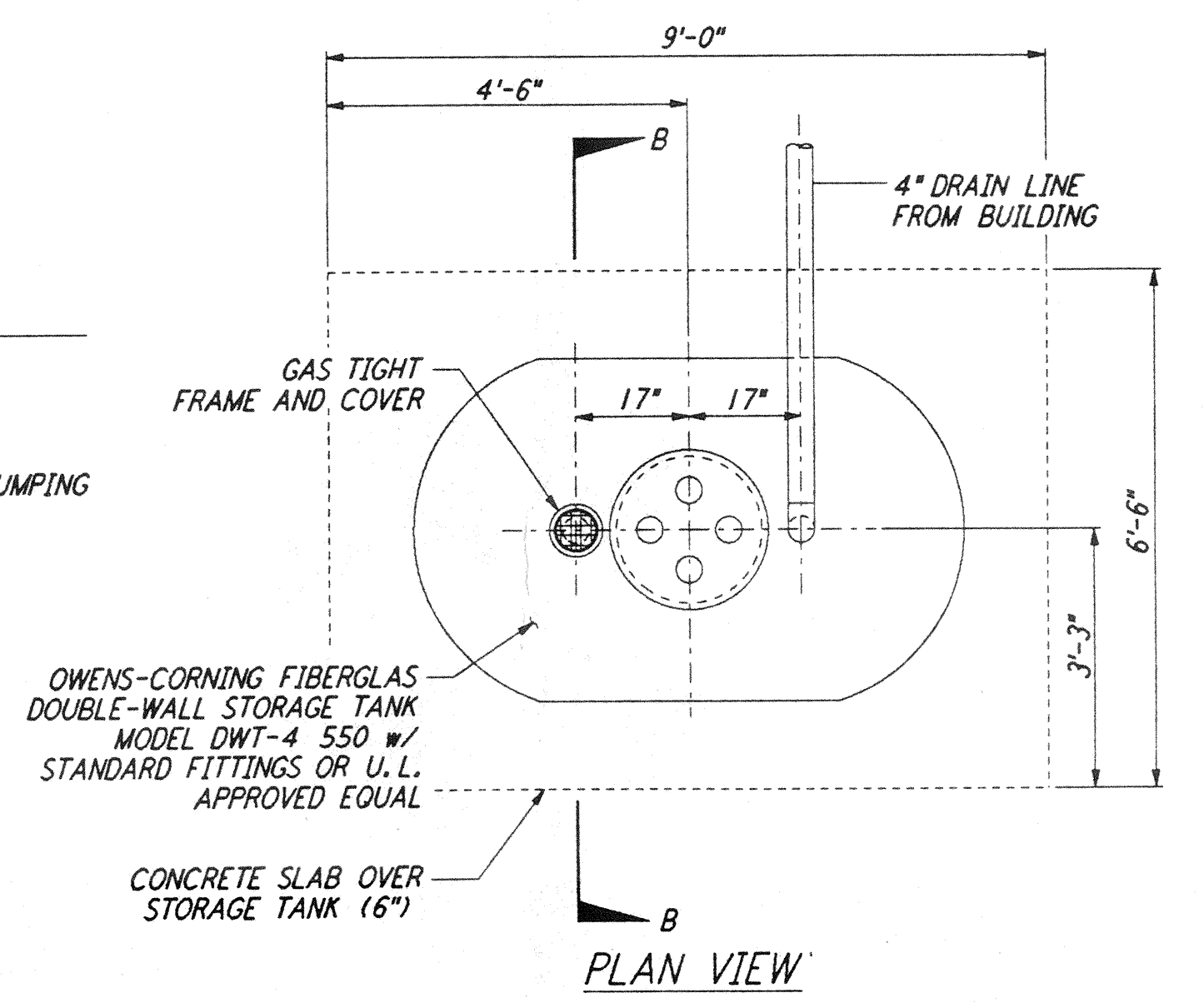
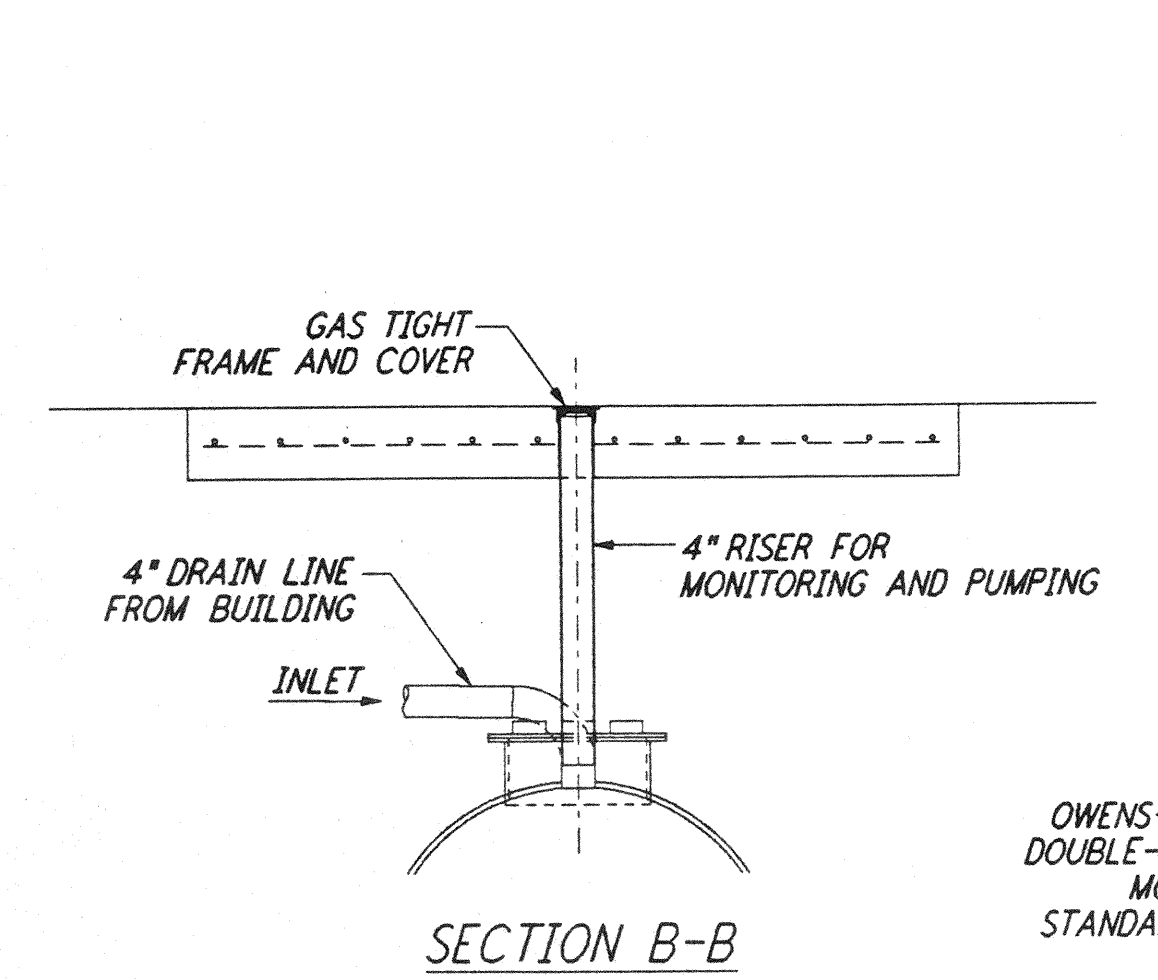
TRENCH BEDDING (5) REF
 NOT TO SCALE LA-C-055 LA-C-009 LA-C-010 LA-C-027 LA-C-047



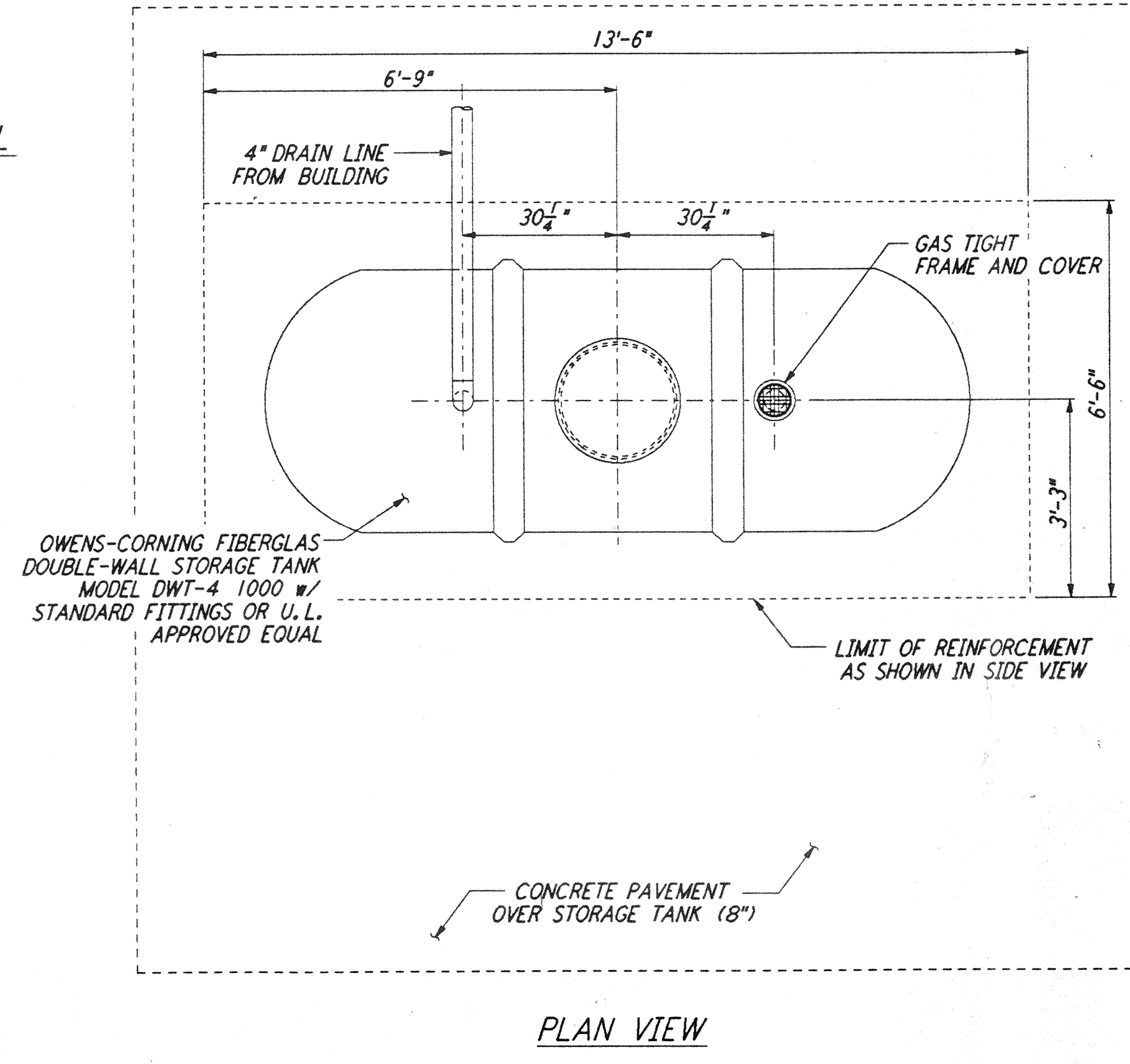
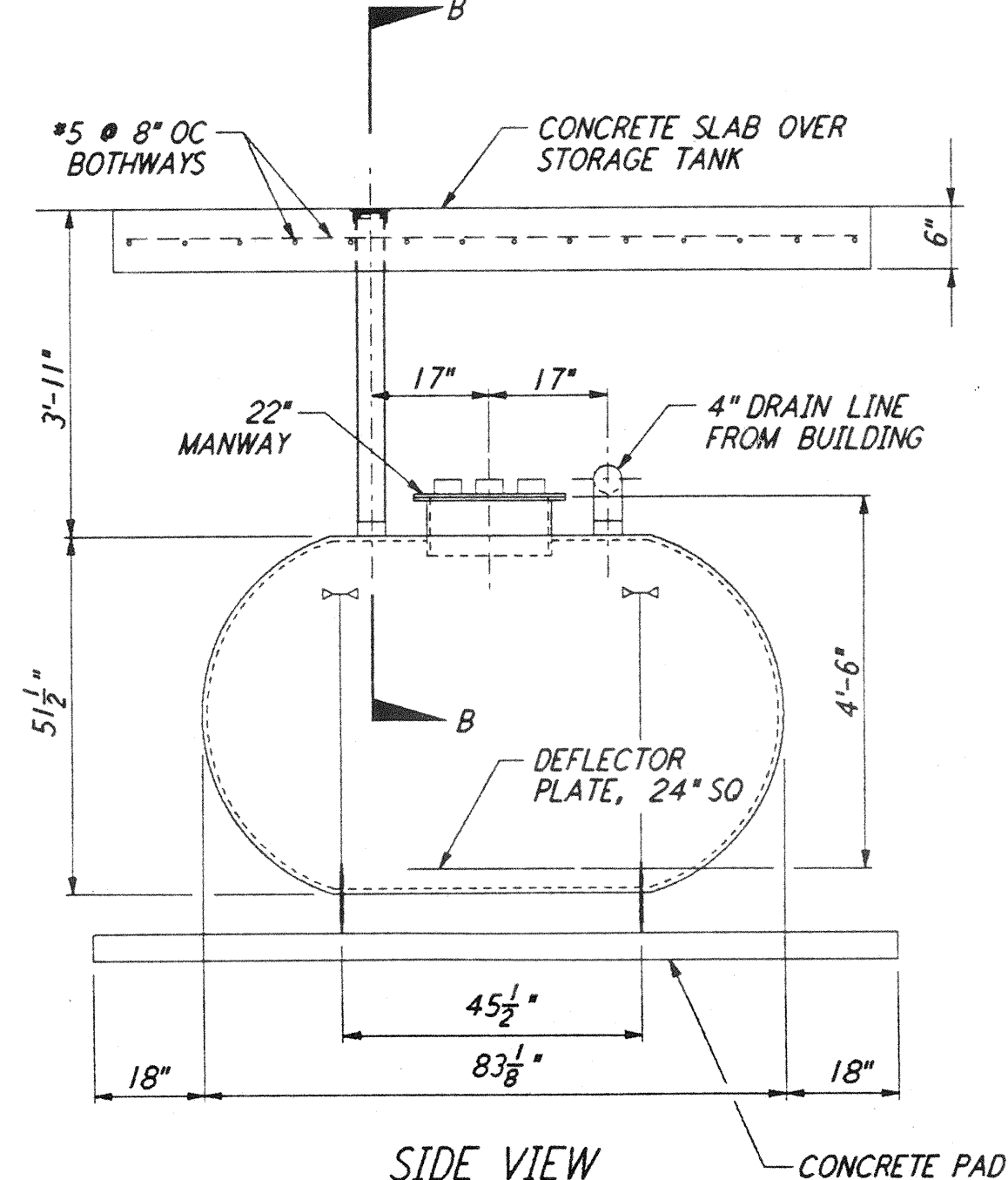
GUARD POST LOCATIONS (FIRE HYDRANT) (6) REF
 NOT TO SCALE LA-C-055 LA-C-009 LA-C-010



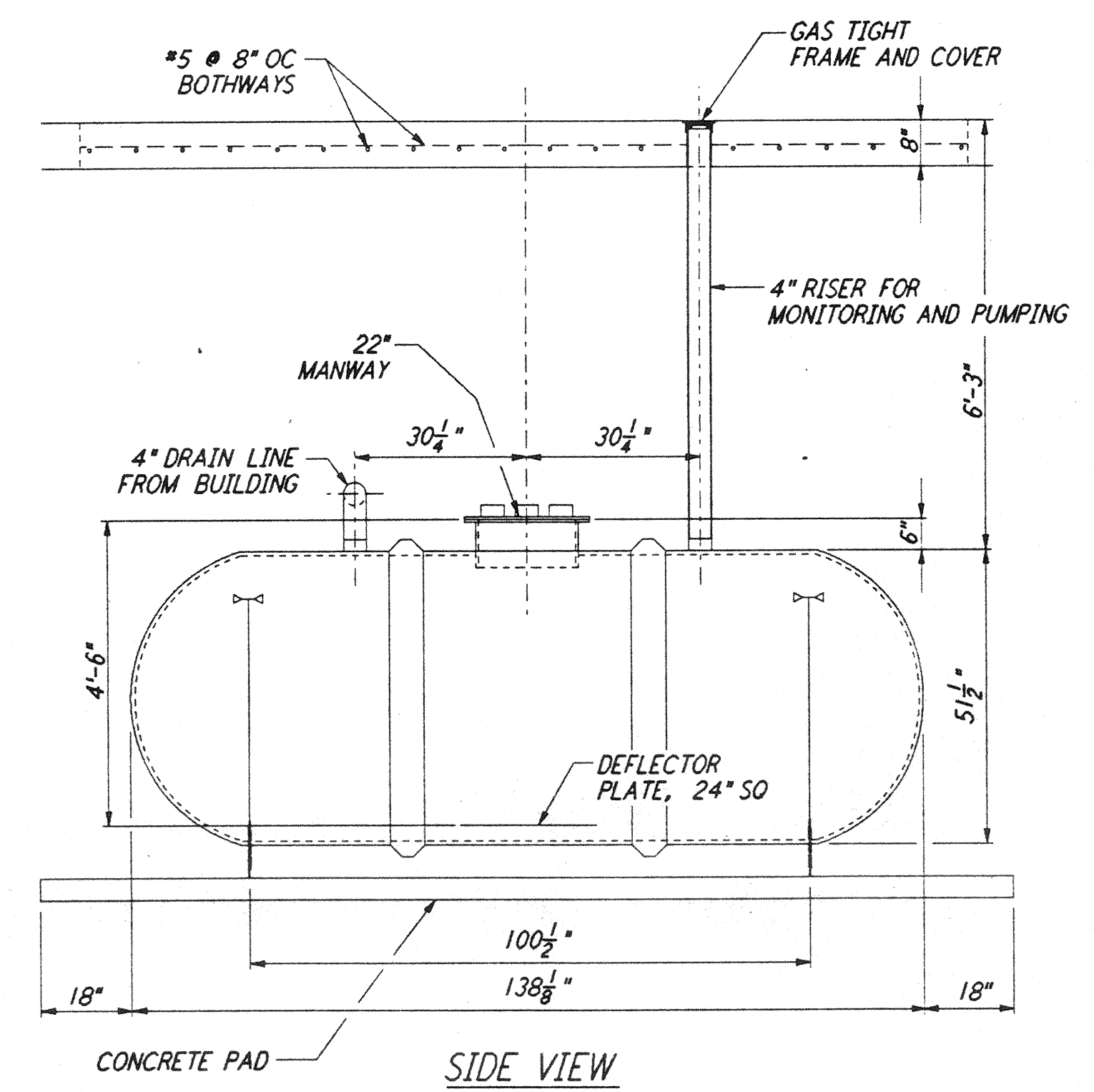
SIDE ELEVATION CONCRETE ANCHOR PAD FOR HOLDING TANKS - TYPICAL



DOUBLE-WALL HOLDING TANK 500 GALLONS (7) REF
 NOT TO SCALE LA-C-055 LA-C-027 LA-C-047



DOUBLE-WALL HOLDING TANK 1000 GALLONS (8) REF
 NOT TO SCALE LA-C-055 LA-C-010



This document and the design it covers are the property of PARSONS. They are loaned only with the borrower's expressed written agreement that they will not be reproduced, copied, loaned, exhibited, or used in any other way, except by written consent from PARSONS to the borrower.

DRAWING NO.	DESCRIPTION	NO.	DATE	BY	CHKD	ENGR	PROJ	DESCRIPTION

ISSUED FOR CONSTRUCTION			
DRAWN	WRB	11-15-96	
CHECKED	JML	11-15-96	
ENGINEER	JWB	11/15/96	
PROJ	SPB	11/15/96	

J. James Blanton
 11/16

PARSONS
 100 WEST WALNUT STREET
 PASADENA, CALIFORNIA

LIGO
 CALIFORNIA INSTITUTE OF TECHNOLOGY
 MASSACHUSETTS INSTITUTE OF TECHNOLOGY

LASER INTERFEROMETER GRAVITATIONAL-WAVE OBSERVATORY SITE NO. 2 - LIVINGSTON, LOUISIANA		
TITLE	CIVIL UTILITY DETAILS	SCALE AS NOTED
CONTRACT NUMBER	PP150969	PROJECT NUMBER 8094
SHEET NUMBER	LA-C-055	REVISIONS