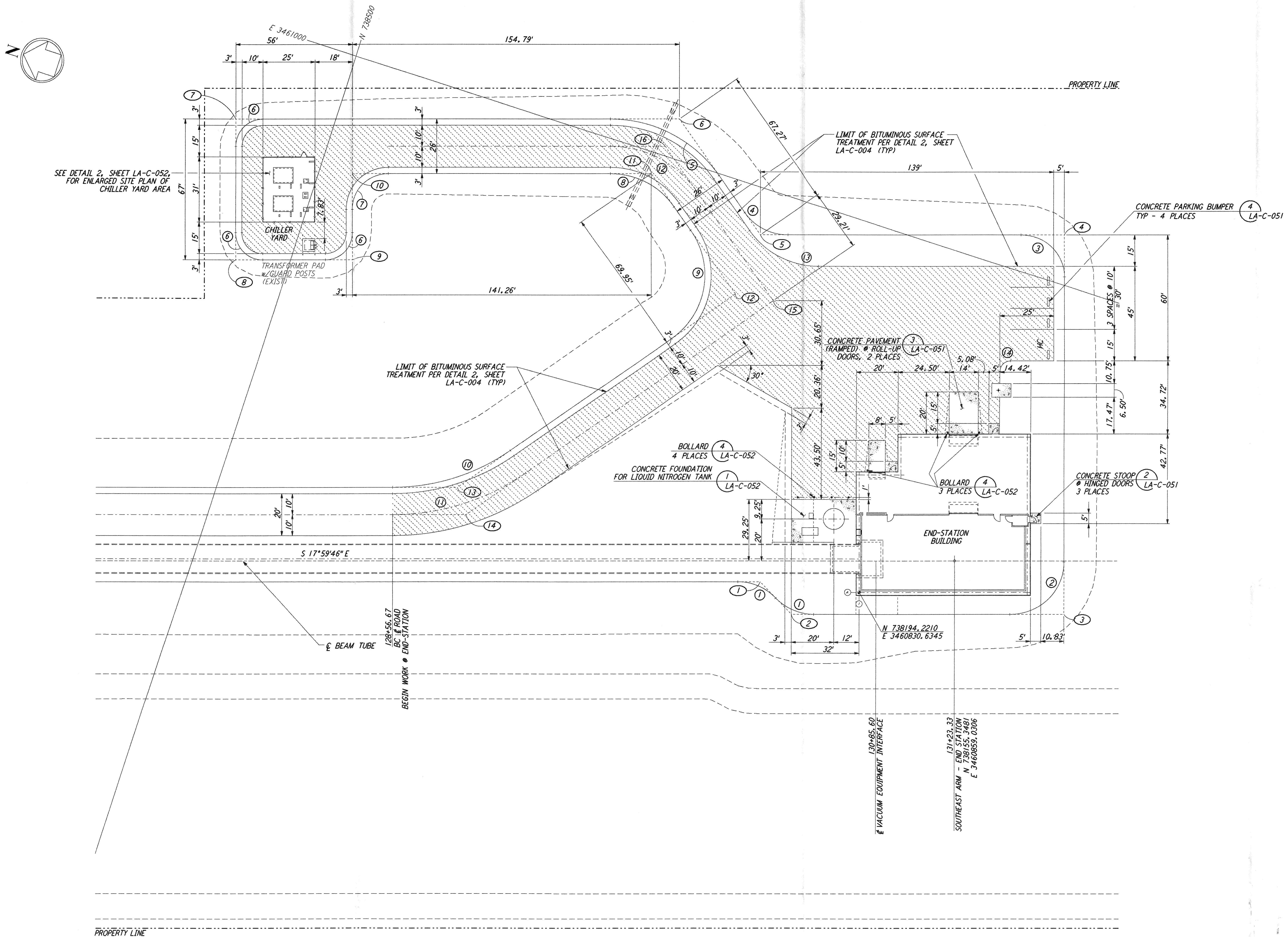


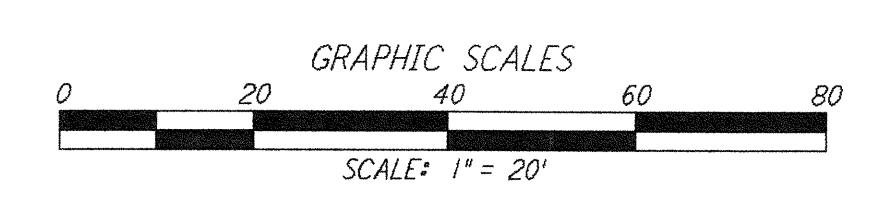
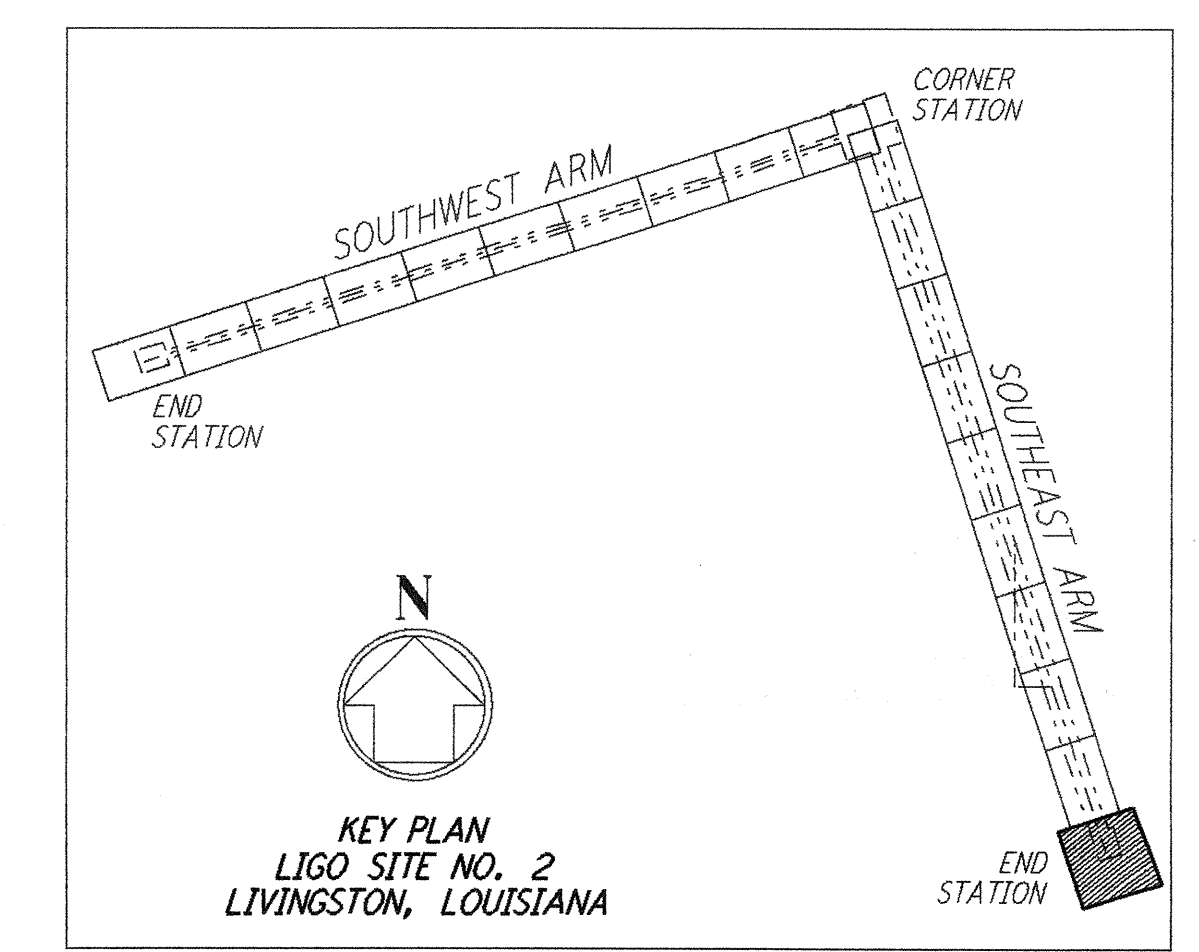
NOTES:
 1. SEE SHEET LA-C-002 FOR GENERAL NOTES, LEGEND AND ABBREVIATIONS.

This document and the design it covers are the property of PARSONS. They are loaned only with the borrower's expressed written agreement that they will not be reproduced, copied, loaned, exhibited, or used in any other way, except by written consent from PARSONS to the borrower.



CURVE DATA					
Δ	RADIUS	LENGTH	TANGENT	REMARK	
1	46°23'52"	25'	20.24'	10.71'	EDGE OF PAD (EXIST)
2	90°00'00"	25'	39.27'	25.00'	EDGE OF PAD (EXIST)
3	90°00'00"	20'	31.42'	20.00'	EDGE OF PAD (EXIST)
4	55°00'00"	25'	24.00'	13.01'	EDGE OF PAD (EXIST)
5	55°00'00"	63'	60.48'	32.80'	EDGE OF PAD (EXIST)
6	90°00'00"	13'	20.42'	13.00'	EDGE OF PAD (EXIST)
7	90°00'00"	17'	26.70'	17.00'	EDGE OF PAD (EXIST)
8	55°00'00"	37'	35.52'	19.26'	EDGE OF PAD (EXIST)
9	90°00'00"	37'	58.12'	37.00'	EDGE OF PAD (EXIST)
10	35°00'00"	97'	59.25'	30.58'	EDGE OF PAD (EXIST)
11	35°00'00"	110'	67.19'	34.68'	EDGE OF PAD (EXIST)
12	55°00'00"	50'	48.00'	26.03'	EDGE OF PAD (EXIST)
13	55°00'00"	40'	38.40'	20.82'	EDGE OF PAD (EXIST)
14	90°00'00"	5'	7.85'	5.00'	EDGE OF PAD (EXIST)

COORDINATES			
Δ	NORTH	EAST	REMARK
1	738240.1477	3460820.9696	PI EDGE OF PAD (EXIST)
2	738221.2989	3460810.7773	PI EDGE OF PAD (EXIST)
3	738098.6358	3460850.6170	PI EDGE OF PAD (EXIST)
4	738154.4793	3461022.5245	PI EDGE OF PAD (EXIST)
5	738291.4282	3460978.0370	PI EDGE OF PAD (EXIST)
6	738345.1456	3461018.5221	PI EDGE OF PAD (EXIST)
7	738545.6226	3460953.3889	PI EDGE OF PAD (EXIST)
8	738524.9199	3460889.6677	PI EDGE OF PAD (EXIST)
9	738471.6601	3460906.9714	PI EDGE OF PAD (EXIST)
10	738484.3293	3460945.9644	PI EDGE OF PAD (EXIST)
11	738349.9850	3460989.6121	PI EDGE OF PAD (EXIST)
12	738294.1309	3460947.5166	PI EDGE OF PAD (EXIST)
13	738390.7051	3460819.3766	PI EDGE OF PAD (EXIST)
14	738382.7902	3460808.2789	PI EDGE OF PAD (EXIST)
15	738275.9249	3460950.0741	PI EDGE OF PAD (EXIST)
16	738347.5656	3461004.0669	PI EDGE OF PAD (EXIST)



LIGO-D960858-B-0

NO.	DATE	BY	CHKD	ENGR	PROJ	DESCRIPTION
B	7/24/96	WRB	JML	JB	TDM	ISSUED FOR BID
A	6/14/96	WRB	ML	JB	TDM	FINAL DESIGN REVIEW

DRAWN	WRB
CHECKED	
ENGINEER	
PROJ	



100 WEST WALNUT STREET
 PASADENA, CALIFORNIA



CALIFORNIA INSTITUTE OF TECHNOLOGY
 MASSACHUSETTS INSTITUTE OF TECHNOLOGY

LASER INTERFEROMETER
 GRAVITATIONAL-WAVE OBSERVATORY
 SITE NO. 2 - LIVINGSTON, LOUISIANA

CIVIL
 SOUTHWEST ARM
 END-STATION
 PLOT PLAN

SCALE: 1" = 20'

CONTRACT NUMBER: PPI50969
 PROJECT NUMBER: 8094

SHEET NUMBER: **LA-C-045**