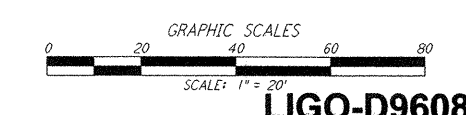
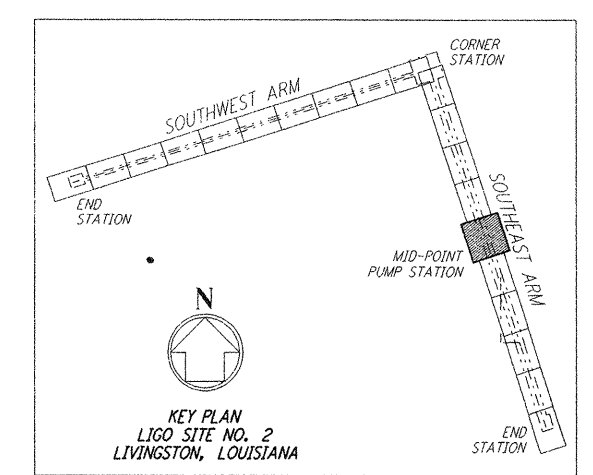
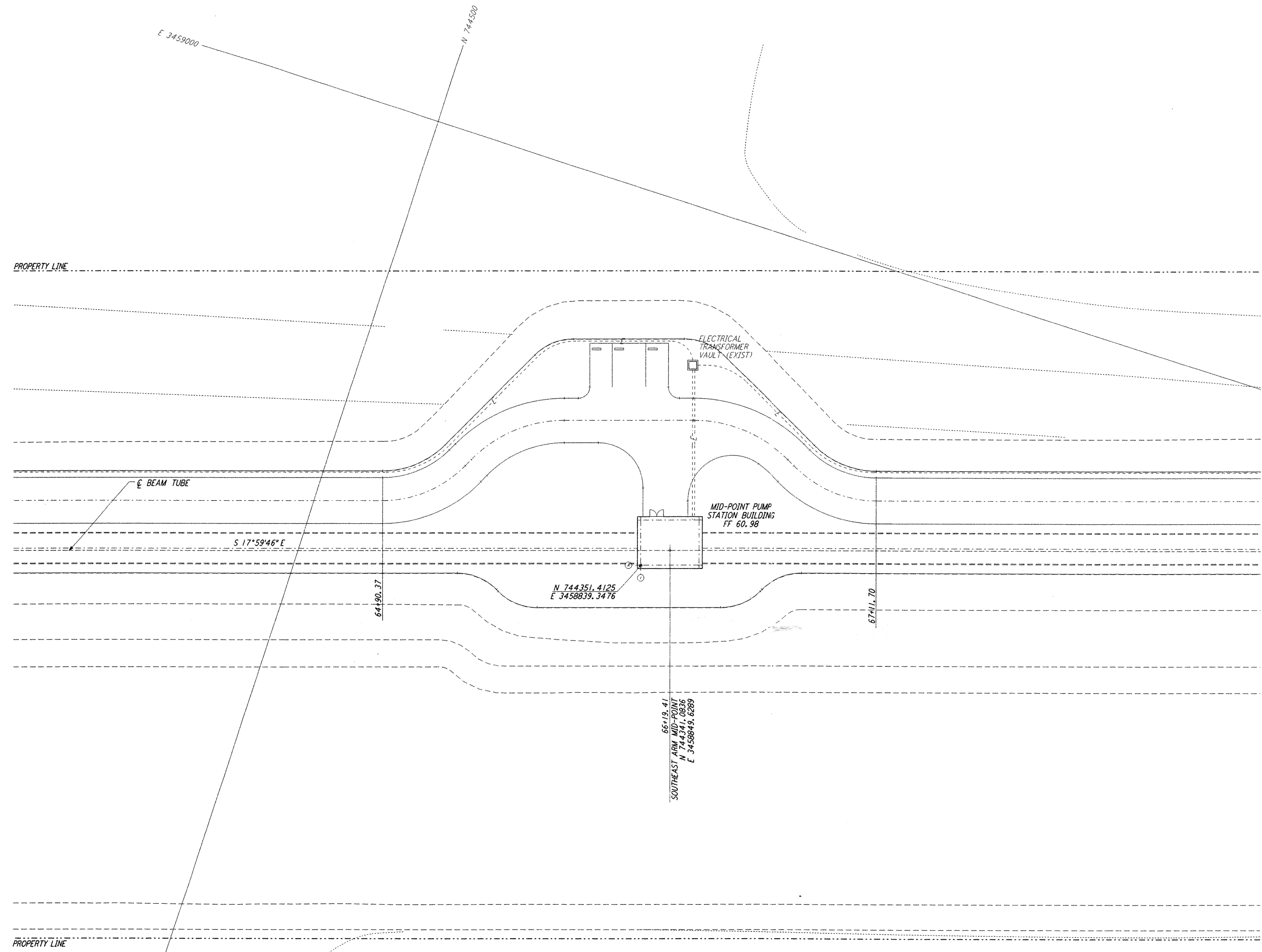
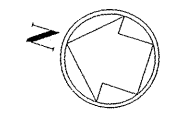


NOTES:
 1. SEE SHEET LA-C-002 FOR GENERAL NOTES, LEGEND AND ABBREVIATIONS.



NO.	DATE	BY	CHKD	ENGR	PROJ	DESCRIPTION
2	08-07-98	WRB	ML	JB	TDM	ISSUED FOR AS-BUILT
1	2-3-97	WRB	ML	JB	TDM	REVISED MID STATION, FIN FLR ELEV

AS-BUILT DRAWINGS

ISSUED FOR CONSTRUCTION
 DRAWN: WRB 11-15-96
 CHECKED: ML 11-15-96
 ENGINEER: JB 11-15-96
 PROJ: TDM 11-15-96

PARSONS
 100 WEST WALNUT STREET
 PASADENA, CALIFORNIA

LIGO
 CALIFORNIA INSTITUTE OF TECHNOLOGY
 MASSACHUSETTS INSTITUTE OF TECHNOLOGY

LIGO-D960857-02-0
 LASER INTERFEROMETER
 GRAVITATIONAL-WAVE OBSERVATORY
 SITE NO. 2 - LIVINGSTON, LOUISIANA

TITLE: CIVIL SOUTHEAST ARM PUMP STATION UTILITY PLAN
 SHEET NUMBER: 1
 SCALE: 1" = 20'
 CONTRACT NUMBER: PPI50969
 PROJECT NUMBER: 8094
LA-C-043

This document and the design it covers are the property of PARSONS. They are loaned only with the borrower's expressed written agreement that they will not be reproduced, copied, loaned, exhibited, or used in any other way, except by written consent from PARSONS to the borrower.