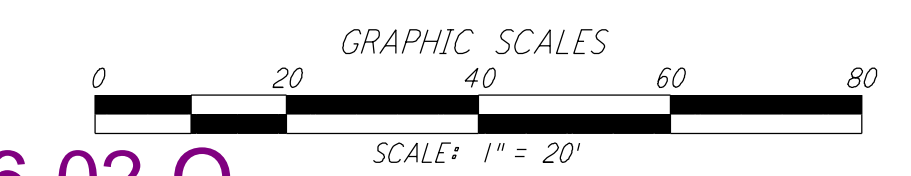
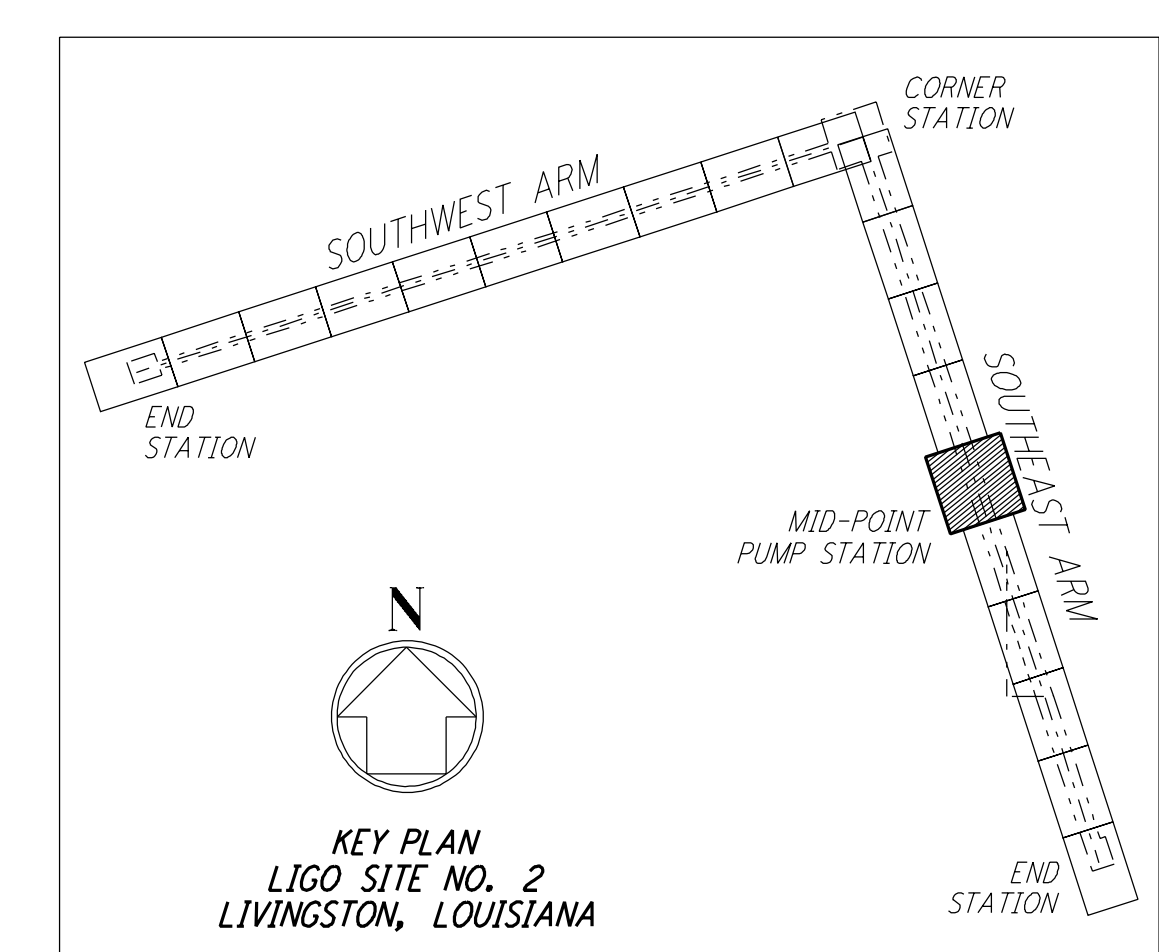
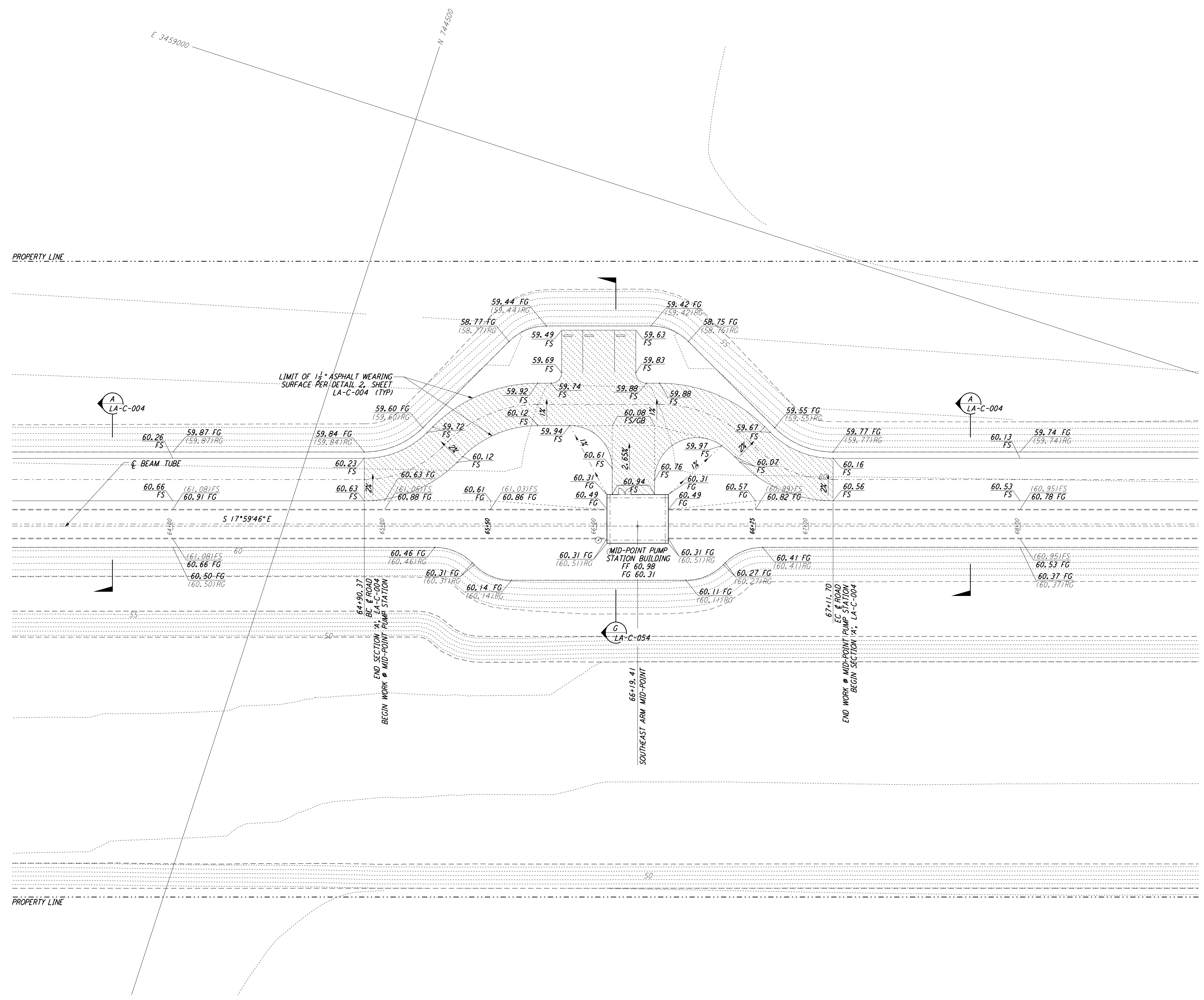


NOTES:
 1. SEE SHEET LA-C-002 FOR GENERAL NOTES, LEGEND AND ABBREVIATIONS.



LIGO-D960856-02-O

This document and the design it covers are the property of PARSONS. They are loaned only with the borrower's expressed written agreement that they will not be reproduced, copied, loaned, exhibited, or used in any other way, except by written consent from PARSONS to the borrower.

NO.	DATE	BY	CHKD	ENGR	PROJ	DESCRIPTION
2	08-07-98	WRB	ML	JB	TDM	ISSUED FOR AS-BUILT
1	2-3-97	WRB	ML	JB	TDM	REVISED MID STATION, FIN FLR ELEV, FIN GRADES

ISSUED FOR CONSTRUCTION			
DRAWN	WRB	11-15-96	
CHECKED	ML	11-15-96	
ENGINEER	JB	11-15-96	
PROJ	TDM	11-15-96	

AS-BUILT DRAWINGS

100 WEST WALNUT STREET
PASADENA, CALIFORNIA

CALIFORNIA INSTITUTE OF TECHNOLOGY
MASSACHUSETTS INSTITUTE OF TECHNOLOGY

**LASER INTERFEROMETER
GRAVITATIONAL-WAVE OBSERVATORY
SITE NO. 2 - LIVINGSTON, LOUISIANA**

TITLE	SCALE	CONTRACT NUMBER	PROJECT NUMBER
CIVIL SOUTHEAST ARM PUMP STATION GRADING PLAN	1" = 20'	PP150969	8094
SHEET NUMBER		REVISIONS	
LA-C-042			