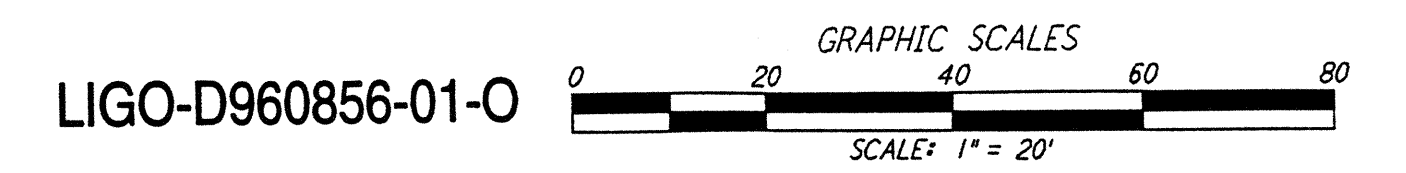
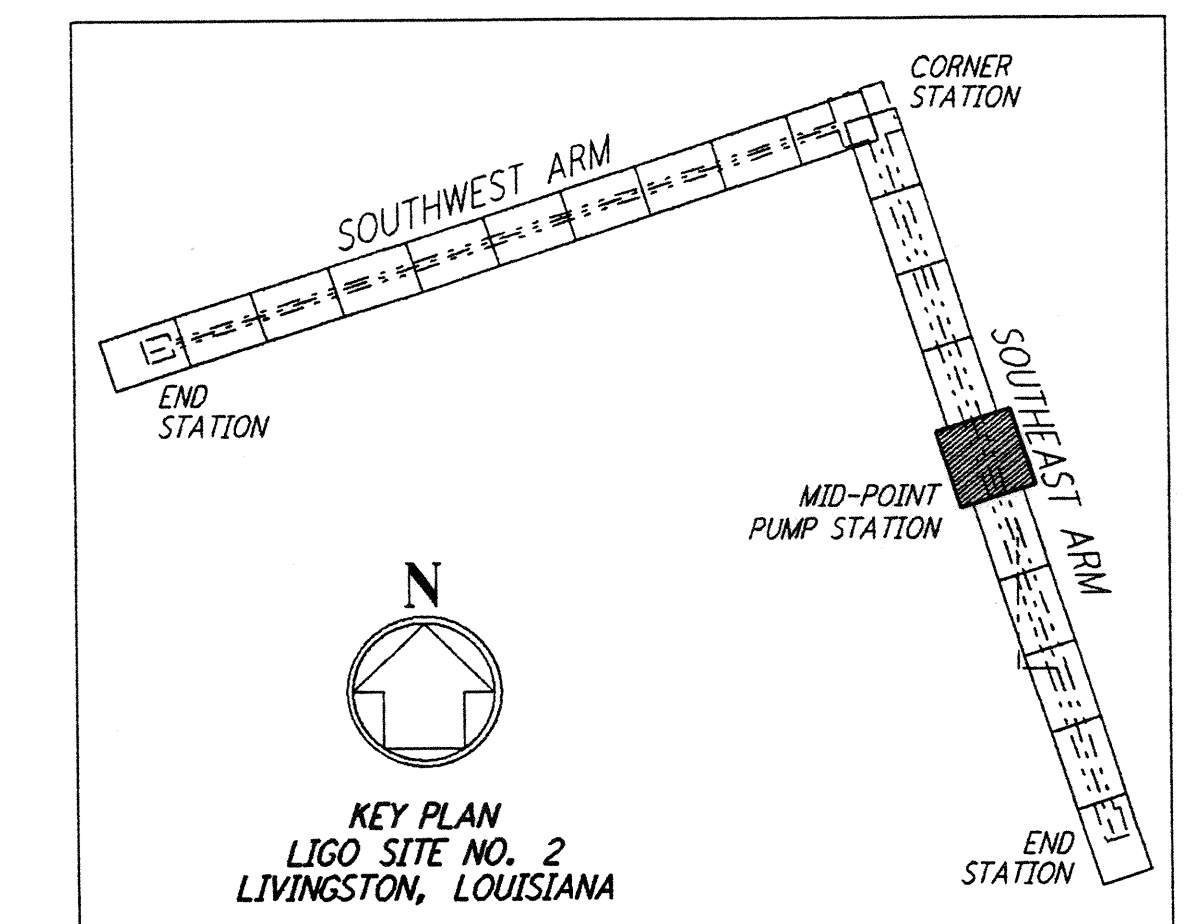
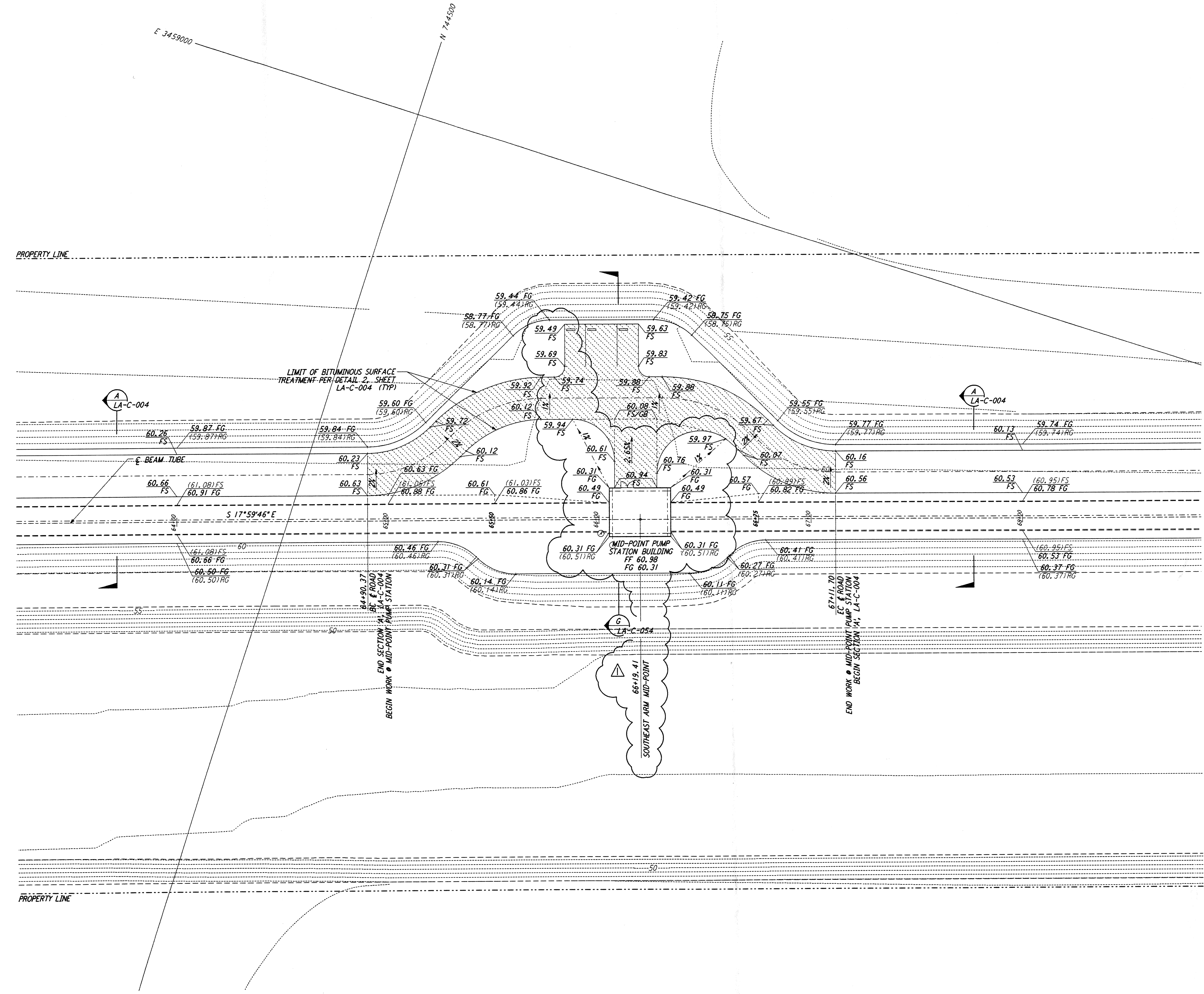


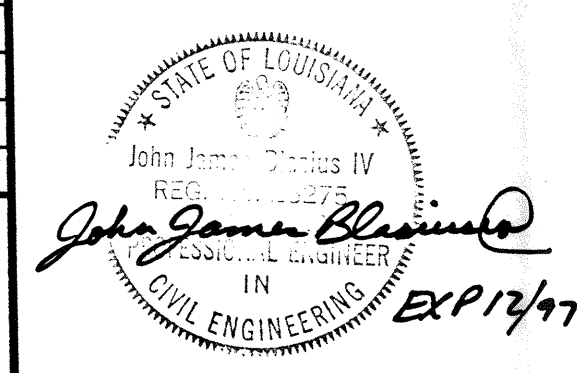
NOTES:
 1. SEE SHEET LA-C-002 FOR GENERAL NOTES, LEGEND AND ABBREVIATIONS.

This document and the design it covers are the property of PARSONS. They are loaned only with the borrower's expressed written agreement that they will not be reproduced, copied, loaned, exhibited, or used in any other way, except by written consent from PARSONS to the borrower.



NO.	DATE	WRB	CL	JJS	TDM	DESCRIPTION
1	2-3-97	WRB	CL	JJS	TDM	REVISED MID STATION, FIN FLR ELEV, FIN GRADES

ISSUED FOR CONSTRUCTION	
DRAWN	WRB 11-15-96
CHECKED	ML 11-15-96
ENGINEER	JB 11-15-96
PROJ	TDM 11-15-96



PARSONS
 100 WEST WALNUT STREET
 PASADENA, CALIFORNIA

LIGO
 CALIFORNIA INSTITUTE OF TECHNOLOGY
 MASSACHUSETTS INSTITUTE OF TECHNOLOGY

LASER INTERFEROMETER
 GRAVITATIONAL-WAVE OBSERVATORY
 SITE NO. 2 - LIVINGSTON, LOUISIANA

TITLE	SCALE	CONTRACT NUMBER	PROJECT NUMBER
CIVIL SOUTHEAST ARM PUMP STATION GRADING PLAN	1" = 20'	PP150969	8094
SHEET NUMBER		REVISIONS	
LA-C-042			

ON: P03 LIB/TDM 1/1/1 5:57:00Z JAVLUITSABUEUESXVBBZVLEPZLZTTE

J:\LIGO\SITE2\CE\LA-C-042.DWG