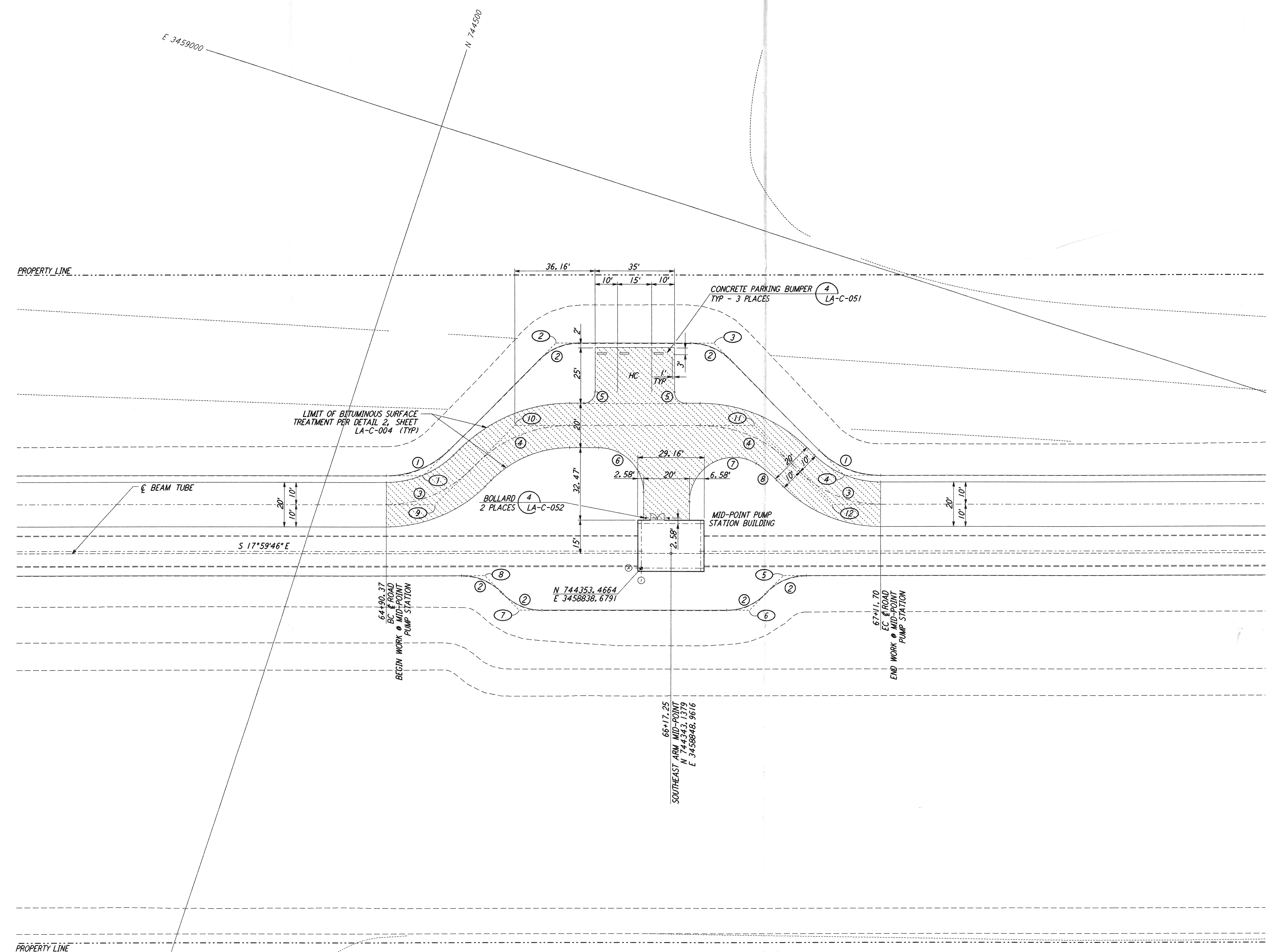


NOTES:
 1. SEE SHEET LA-C-002 FOR GENERAL NOTES, LEGEND AND ABBREVIATIONS.

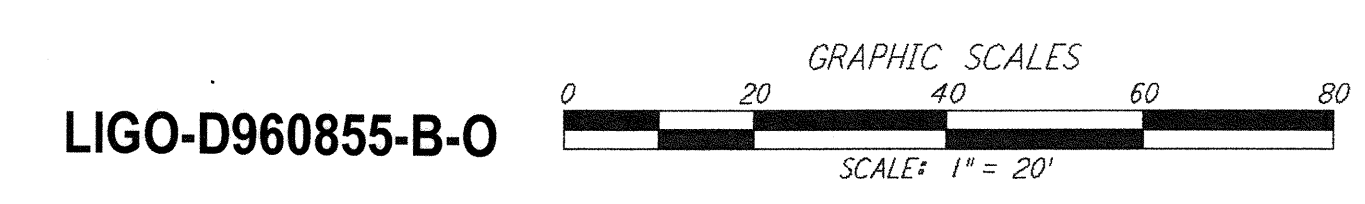
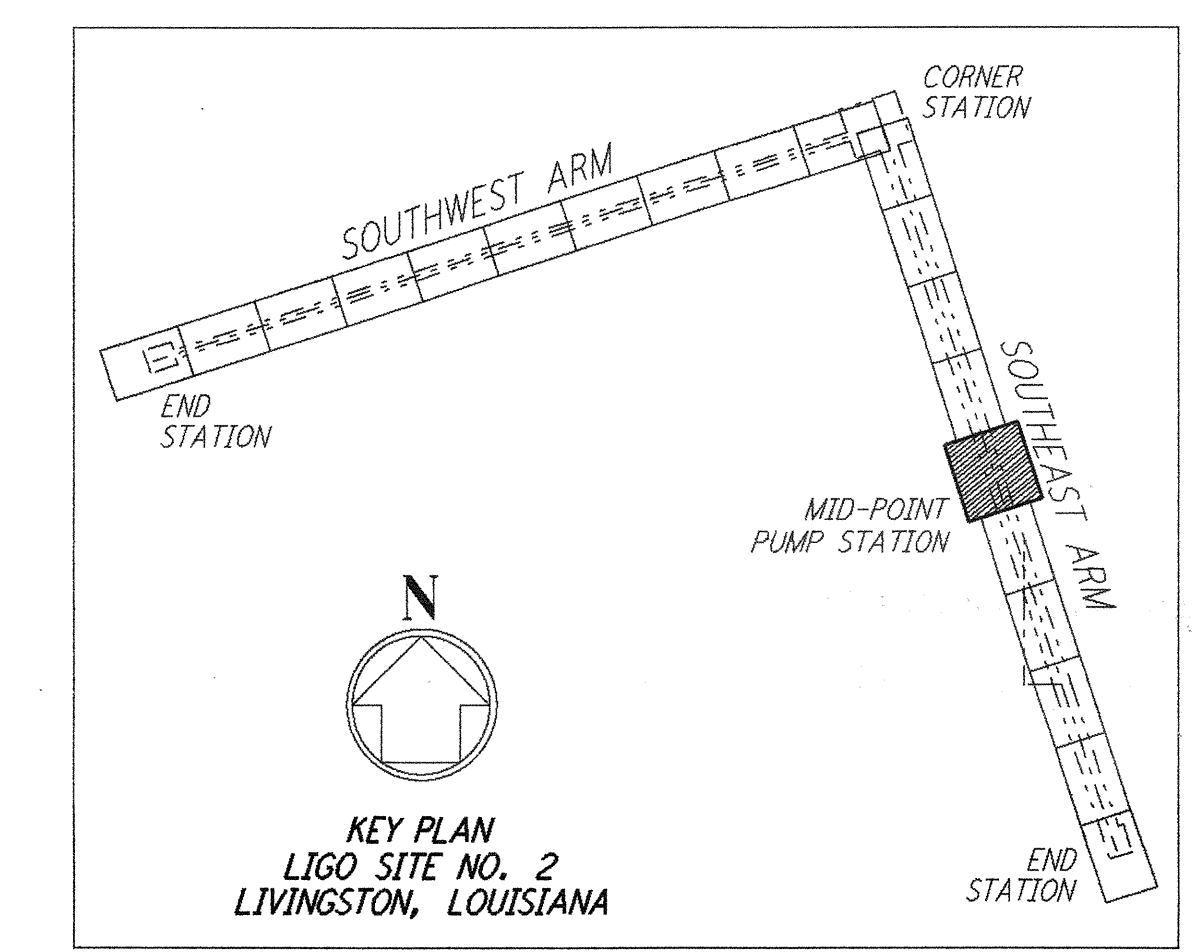
not be reproduced, copied, loaned, exhibited, or used in any other way, except by written consent from PARSONS to the borrower.

This document and the design it covers are the property of PARSONS. They are loaned only with the borrower's expressed written agreement that they will



| CURVE DATA | | | | | |
|------------|------------|--------|---------|--------|---------------------|
| Δ | RADIUS | LENGTH | TANGENT | REMARK | |
| 1 | 45°00'00" | 39' | 30.63' | 16.16' | EDGE OF PAD (EXIST) |
| 2 | 45°00'00" | 25' | 19.63' | 10.36' | EDGE OF PAD (EXIST) |
| 3 | 45°00'00" | 52' | 40.84' | 21.54' | ∅ ROAD |
| 4 | 45°00'00" | 60' | 47.12' | 24.85' | ∅ ROAD |
| 5 | 90°00'00" | 5' | 7.85' | 5.00' | |
| 6 | 90°00'00" | 20' | 31.42' | 20.00' | |
| 7 | 120°53'25" | 20' | 42.20' | 35.27' | |
| 8 | 14°06'35" | 50' | 12.31' | 6.19' | |

| COORDINATES | | | REMARK |
|-------------|-------------|--------------|------------------------|
| Δ | NORTH | EAST | |
| 1 | 744459.2558 | 3458848.0417 | PI EDGE OF PAD (EXIST) |
| 2 | 744421.0616 | 3458922.9895 | PI EDGE OF PAD (EXIST) |
| 3 | 744354.4348 | 3458944.6329 | PI EDGE OF PAD (EXIST) |
| 4 | 744279.4870 | 3458906.4386 | PI EDGE OF PAD (EXIST) |
| 5 | 744291.7284 | 3458855.1473 | PI EDGE OF PAD (EXIST) |
| 6 | 744301.6935 | 3458835.5930 | PI EDGE OF PAD (EXIST) |
| 7 | 744399.6545 | 3458803.7709 | PI EDGE OF PAD (EXIST) |
| 8 | 744419.2088 | 3458813.7361 | PI EDGE OF PAD (EXIST) |
| 9 | 744450.1181 | 3458837.3414 | PI ∅ ROAD |
| 10 | 744427.3479 | 3458882.0229 | PI ∅ ROAD |
| 11 | 744325.2733 | 3458915.1812 | PI ∅ ROAD |
| 12 | 744280.5922 | 3458892.4109 | PI ∅ ROAD |



| NO. | DATE | BY | CHKD | ENGR | PROJ | DESCRIPTION |
|-----|---------|-----|------|------|------|---------------------|
| B | 7/24/96 | WRB | ML | JB | TDM | ISSUED FOR BID |
| A | 6/14/96 | WRB | ML | JB | TDM | FINAL DESIGN REVIEW |

| | |
|----------|-----|
| DRAWN | WRB |
| CHECKED | |
| ENGINEER | |
| PROJ | |

PARSONS
 100 WEST WALNUT STREET
 PASADENA, CALIFORNIA

LIGO
 CALIFORNIA INSTITUTE OF TECHNOLOGY
 MASSACHUSETTS INSTITUTE OF TECHNOLOGY

LASER INTERFEROMETER
 GRAVITATIONAL-WAVE OBSERVATORY
 SITE NO. 2 - LIVINGSTON, LOUISIANA

| | | | | |
|--------------|---|-------------------|------------------------------|------------------------|
| TITLE | CIVIL SOUTHEAST ARM PUMP STATION PLOT PLAN | SCALE 1" = 20' | CONTRACT NUMBER PPI150969 | PROJECT NUMBER 8094 |
| SHEET NUMBER | LA-C-041 | REVISIONS | | |

PROJ: JUL 22 10:22:29 1996 5:17:50Z J:\PLOT\5\MOUES\3\3062\LA-C-041.PLOT

I:\ligo\site2\ce\loc041.dgz