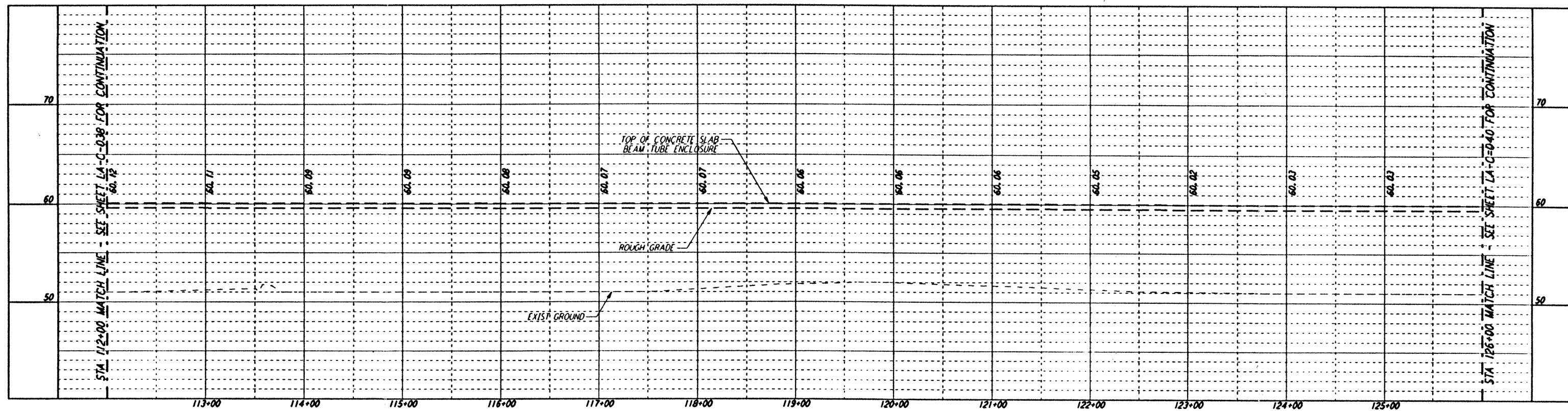
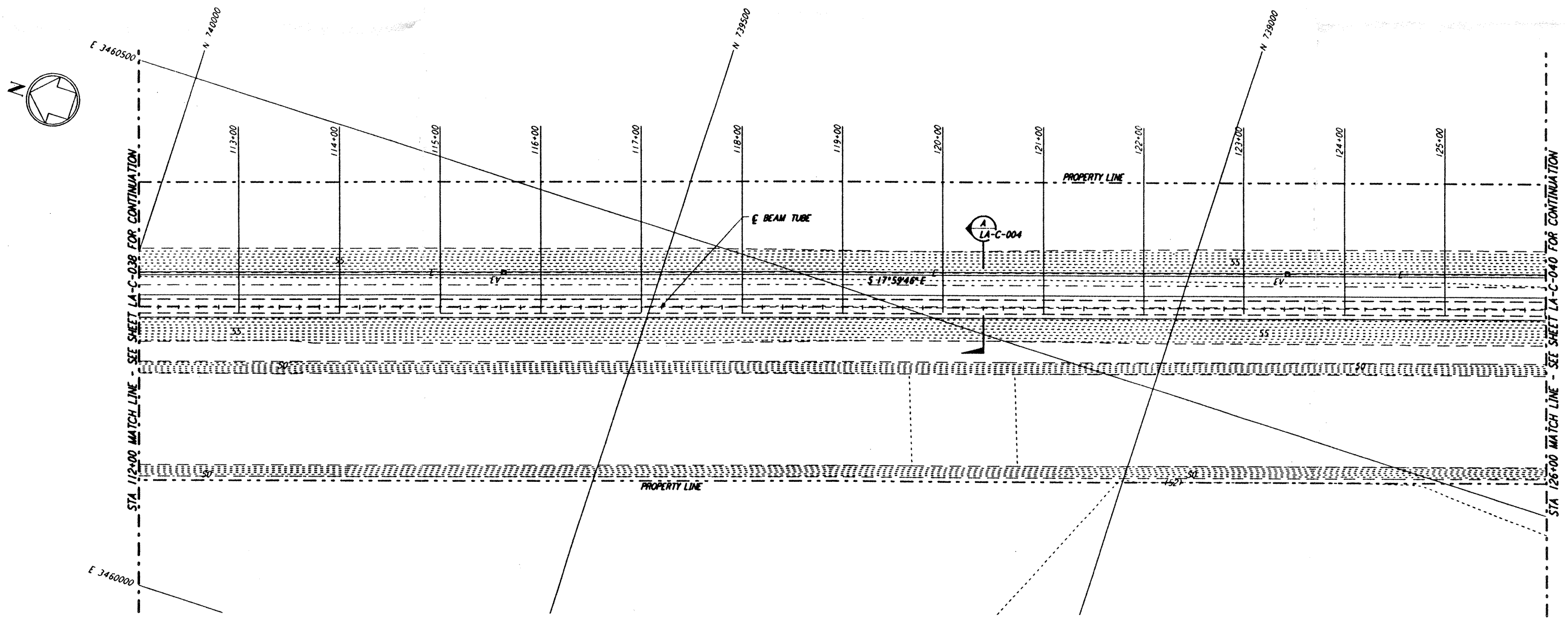


This document and the design it covers are the property of PARSONS. They are loaned only with the borrower's expressed written agreement that they will not be reproduced, copied, loaned, exhibited, or used in any other way, except by written consent from PARSONS to the borrower.

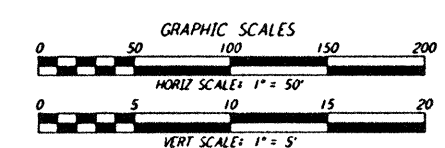
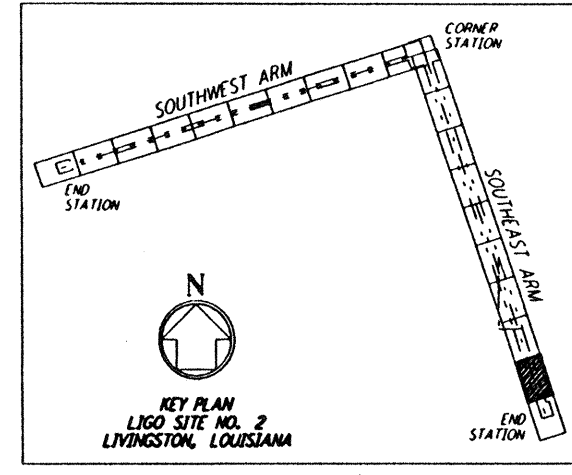


- NOTES:**
- SEE SHEET LA-C-002 FOR GENERAL NOTES, LEGEND AND ABBREVIATIONS.
 - SEE SHEET LA-C-004 FOR TYPICAL SECTIONS AND DETAILS.

PROFILE
 SCALES: HORIZ: 1" = 50'
 VERT: 1" = 5'



PLAN
 SCALE: 1" = 50'



| NO. | DATE | BY | CHKD | ENGR | PROJ | DESCRIPTION |
|-----|---------|-----|------|------|------|---------------------|
| B | 7/24/96 | WRB | ML | EDM | | ISSUED FOR BID |
| A | 6/14/96 | WRB | ML | TDM | | FINAL DESIGN REVIEW |

| | |
|----------|-----|
| DRAWN | WRB |
| CHECKED | |
| ENGINEER | |
| PROJ | |

PARSONS
 100 WEST WALNUT STREET
 PASADENA, CALIFORNIA

LIGO
 CALIFORNIA INSTITUTE OF TECHNOLOGY
 MASSACHUSETTS INSTITUTE OF TECHNOLOGY

LASER INTERFEROMETER GRAVITATIONAL-WAVE OBSERVATORY SITE NO. 2 - LIVINGSTON, LOUISIANA

| | | | | |
|--------------|--------------------------------------|----------|----------|------|
| TITLE | CIVIL SOUTHEAST ARM PLAN AND PROFILE | AS NOTED | PP150969 | 8094 |
| SHEET NUMBER | STA 112+00 TO STA 126+00 | LA-C-039 | | |

LIGO-D960853-B-0 1