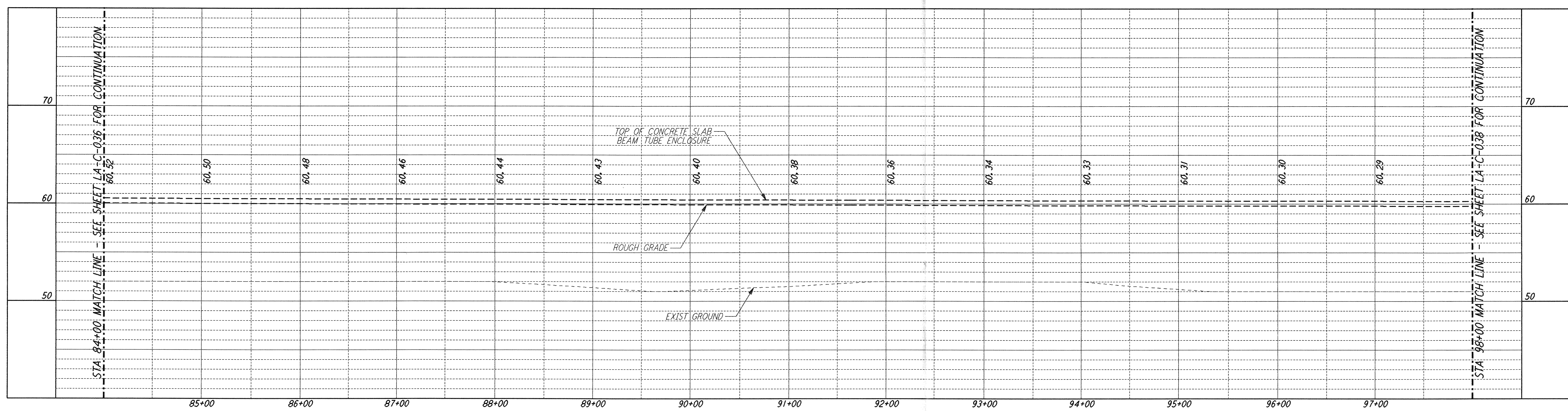


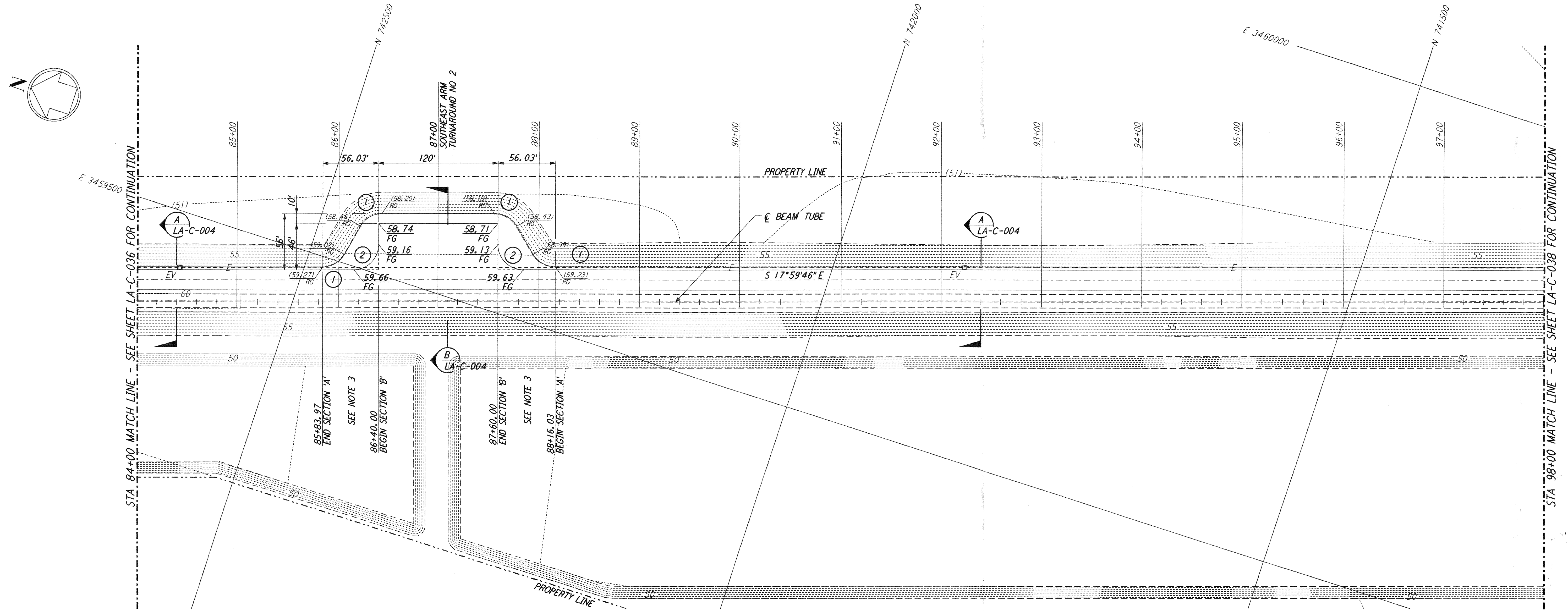
not be reproduced, copied, loaned, exhibited, or used in any other way, except by written consent from PARSONS to the borrower.

This document and the design it covers are the property of PARSONS. They are loaned only with the borrower's expressed written agreement that they will



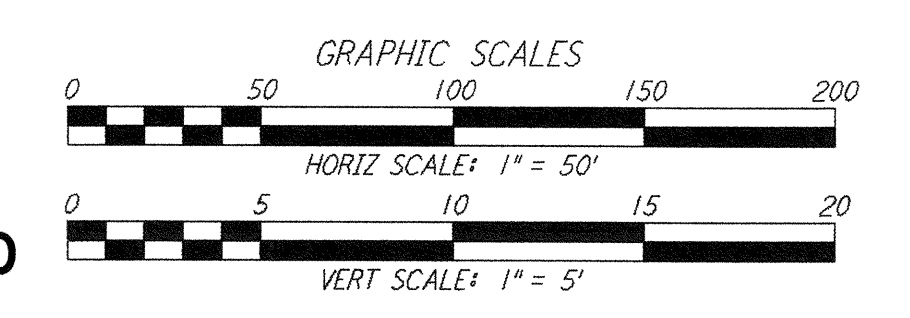
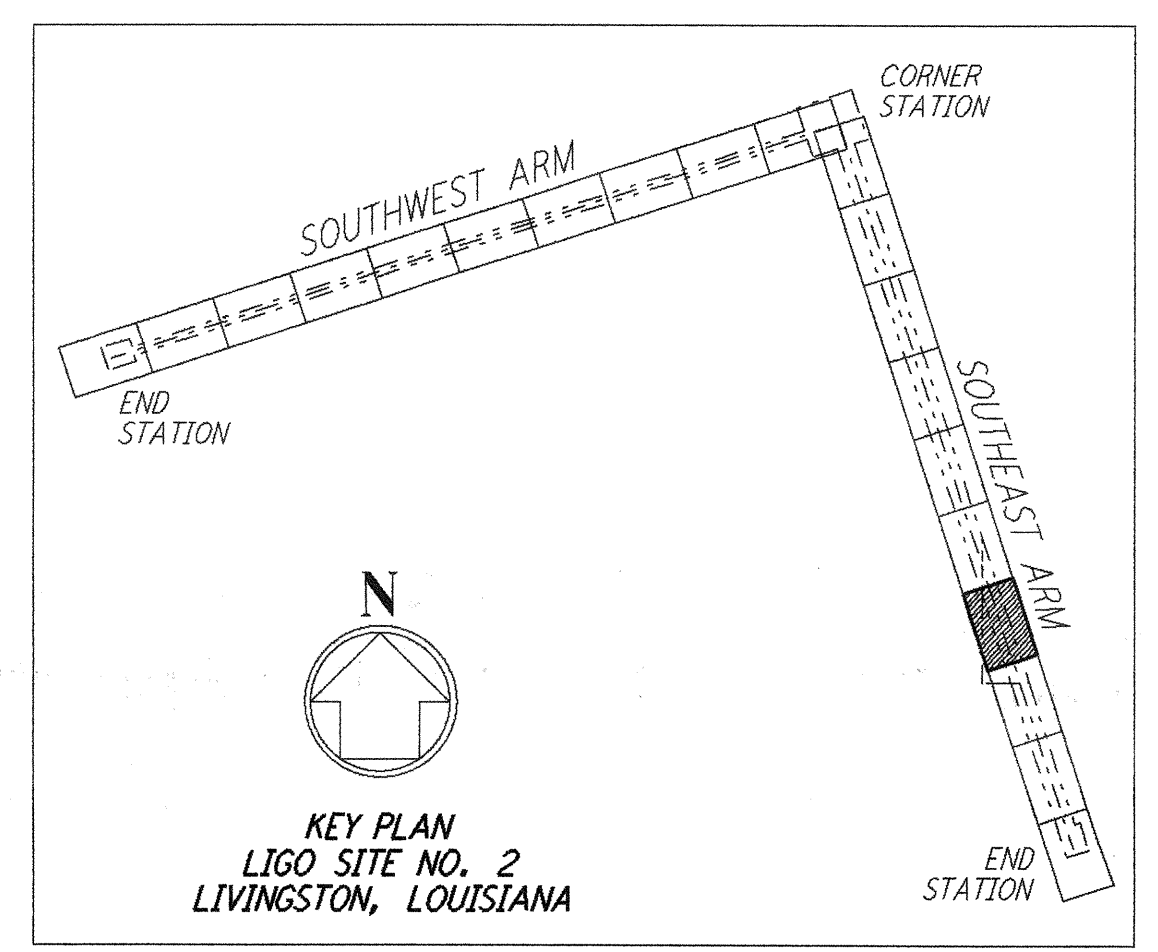
PROFILE
 SCALES: HORIZ: 1" = 50'
 VERT: 1" = 5'

- NOTES:**
- SEE SHEET LA-C-002 FOR GENERAL NOTES, LEGEND AND ABBREVIATIONS.
 - SEE SHEET LA-C-004 FOR TYPICAL SECTIONS AND DETAILS.
 - TRANSITIONS BETWEEN SECTIONS, AS SHOWN ON PLANS, FROM EDGE OF BITUMINOUS SURFACE SLOPE TO EXISTING GRADE.



PLAN
 SCALE: 1" = 50'

CURVE DATA				
Δ	RADIUS	LENGTH	TANGENT	
1	60°00'00"	25'	26.18'	14.43'
2	90°00'00"	25'	39.27'	25.00'



LIGO-D960851-B-0

NO.	DATE	BY	CHKD	ENGR	PROJ	DESCRIPTION
B	7/24/96	WRB	ML	JB	am	ISSUED FOR BID
A	6/14/96	WRB	ML	JB	TDM	FINAL DESIGN REVIEW

DRAWN	WRB
CHECKED	
ENGINEER	
PROJ	

PARSONS
 100 WEST WALNUT STREET
 PASADENA, CALIFORNIA

LIGO
 CALIFORNIA INSTITUTE OF TECHNOLOGY
 MASSACHUSETTS INSTITUTE OF TECHNOLOGY

LASER INTERFEROMETER
 GRAVITATIONAL-WAVE OBSERVATORY
 SITE NO. 2 - LIVINGSTON, LOUISIANA

TITLE	SCALE	CONTRACT NUMBER	PROJECT NUMBER
CIVIL SOUTHEAST ARM PLAN AND PROFILE STA 84+00 TO STA 98+00	AS NOTED	PP150969	8094
SHEET NUMBER		REVISIONS	
LA-C-037		A	

JOB NO. 22 07/24/96 1370 S:\V\2002\JAN\LUIS\VALUES\BDD\LA-C-037.PDF

JOB NO. 22 07/24/96 1370 S:\V\2002\JAN\LUIS\VALUES\BDD\LA-C-037.PDF