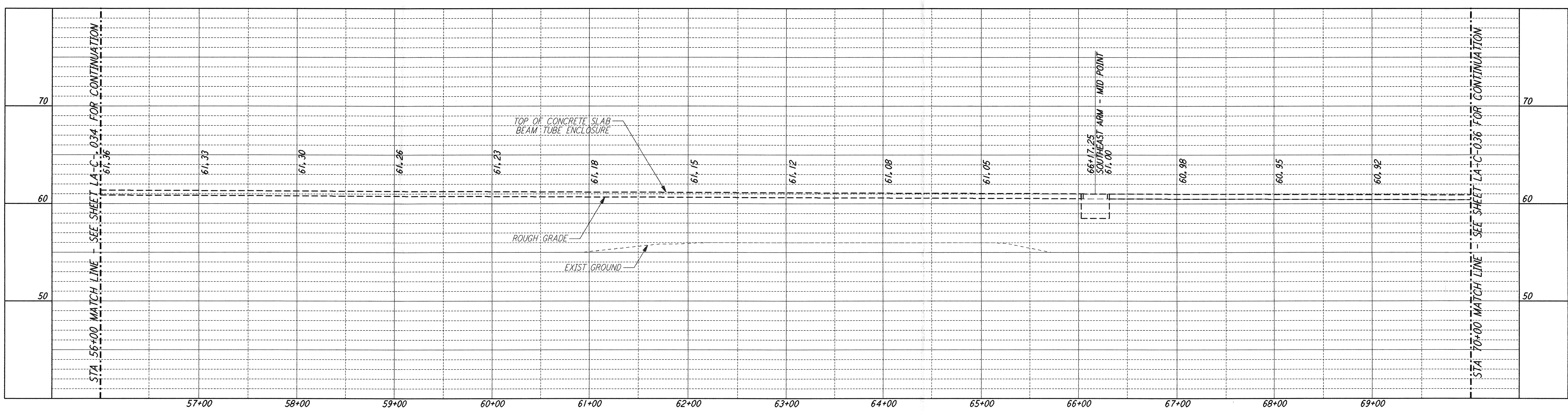
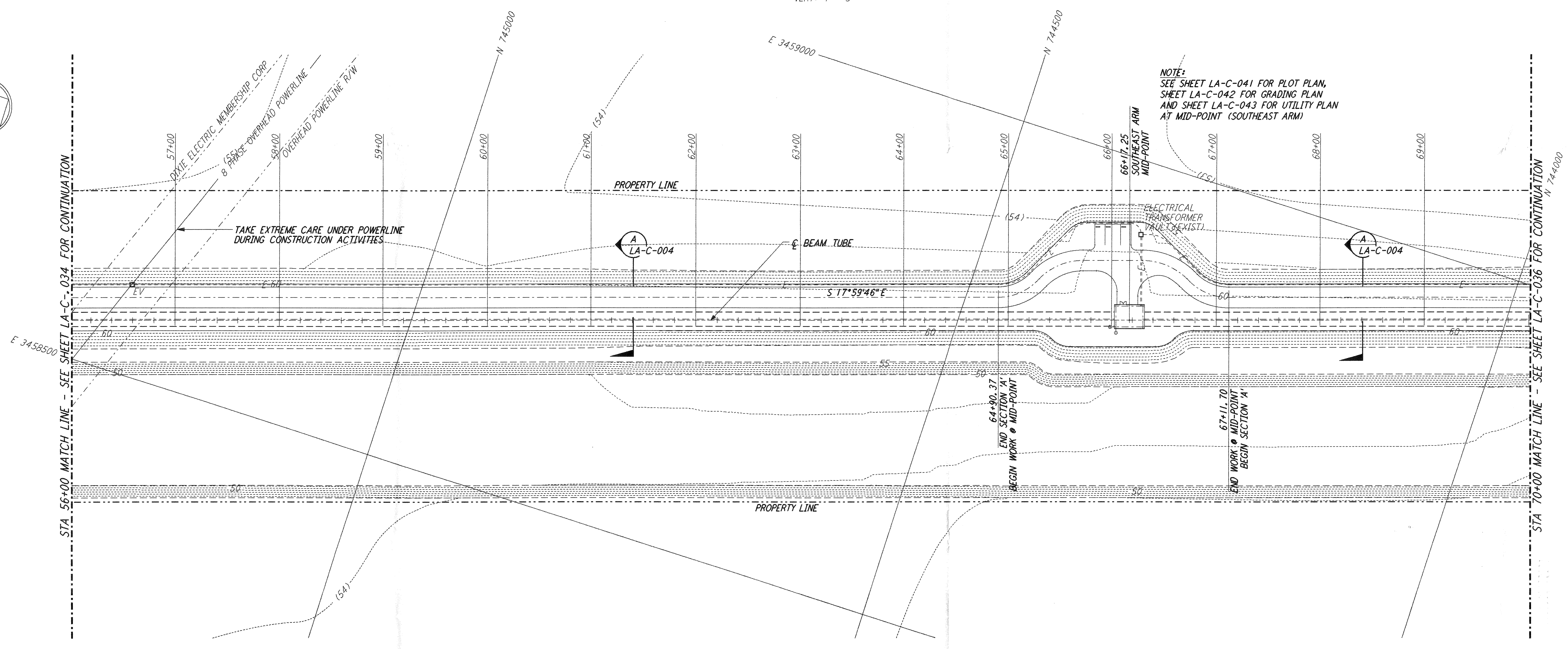
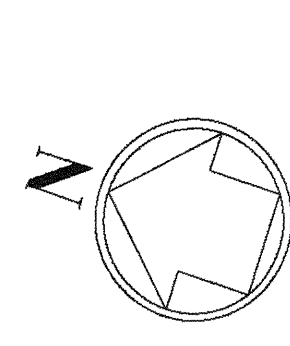


This document and the design it covers are the property of PARSONS. They are loaned only with the borrower's expressed written agreement that they will not be reproduced, copied, loaned, exhibited, or used in any other way, except by written consent from PARSONS to the borrower.



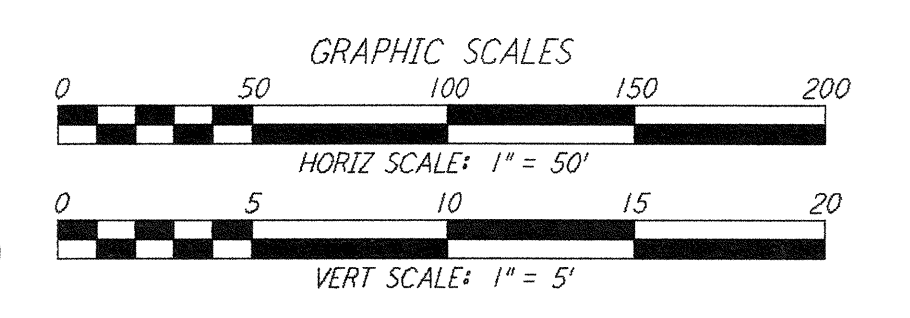
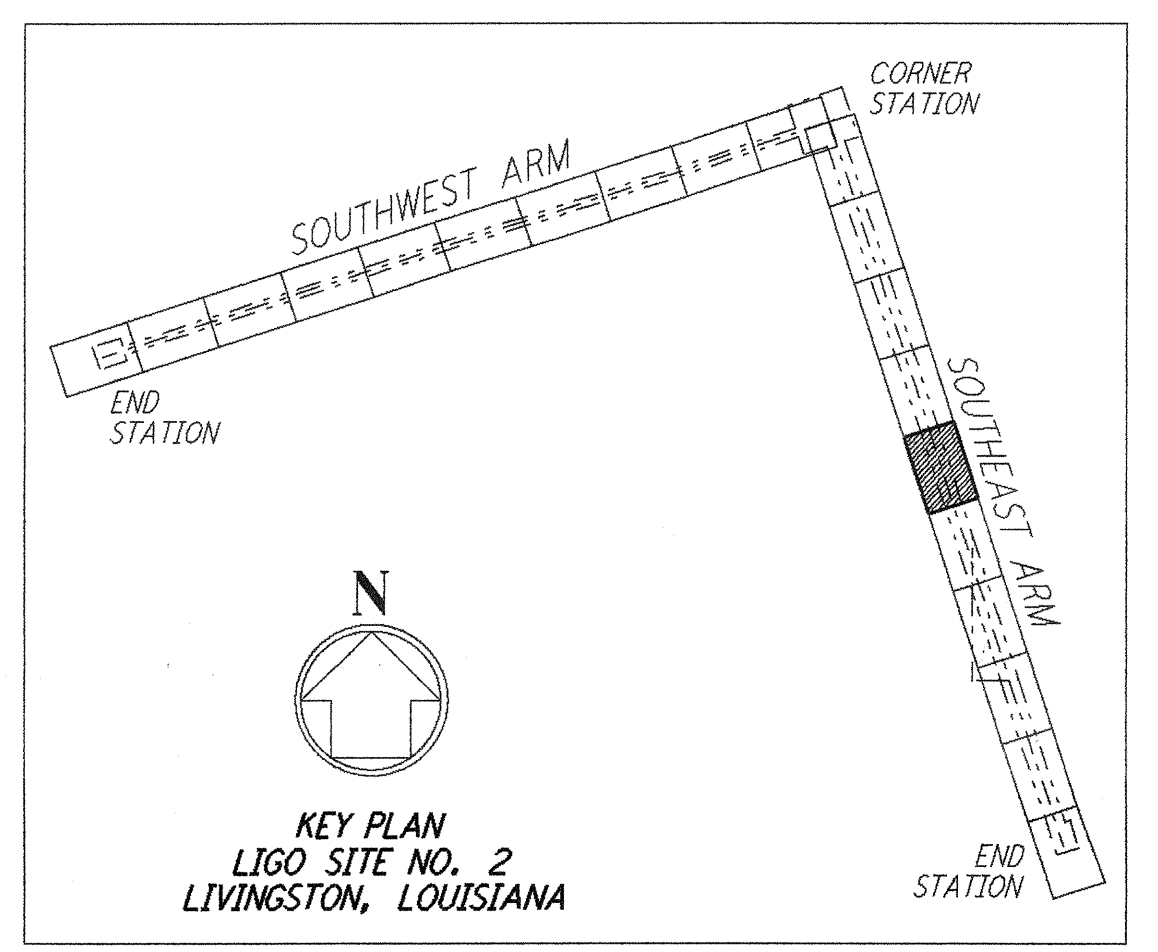
- NOTES:**
- SEE SHEET LA-C-002 FOR GENERAL NOTES, LEGEND AND ABBREVIATIONS.
  - SEE SHEET LA-C-004 FOR TYPICAL SECTIONS AND DETAILS.

**PROFILE**  
 SCALES: HORIZ: 1" = 50'  
 VERT: 1" = 5'



**PLAN**  
 SCALE: 1" = 50'

**NOTE:**  
 SEE SHEET LA-C-041 FOR PLOT PLAN,  
 SHEET LA-C-042 FOR GRADING PLAN  
 AND SHEET LA-C-043 FOR UTILITY PLAN  
 AT MID-POINT (SOUTHEAST ARM)



LIGO-D960849-B-0

NO.	DATE	BY	CHKD	ENGR	PROJ	ISSUE	DESCRIPTION
B	7/24/96	WRB	ML	J	SM	ISSUE	FOR BID
A	6/14/96	WRB	ML	J	TDM	FINAL	DESIGN REVIEW

DRAWN	WRB
CHECKED	
ENGINEER	
PROJ	



100 WEST WALNUT STREET  
 PASADENA, CALIFORNIA



CALIFORNIA INSTITUTE OF TECHNOLOGY  
 MASSACHUSETTS INSTITUTE OF TECHNOLOGY

**LASER INTERFEROMETER  
 GRAVITATIONAL-WAVE OBSERVATORY  
 SITE NO. 2 - LIVINGSTON, LOUISIANA**

TITLE: CIVIL SOUTHEAST ARM PLAN AND PROFILE  
 STA 56+00 TO STA 70+00

SCALE: AS NOTED  
 CONTRACT NUMBER: PPI50969  
 PROJECT NUMBER: 8094

SHEET NUMBER: **LA-C-035**