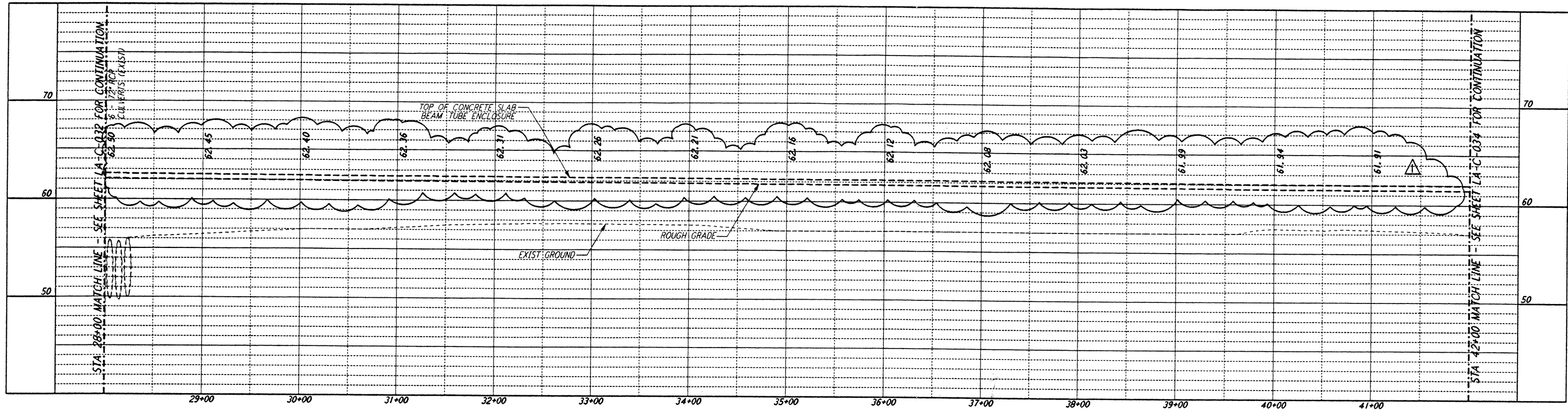
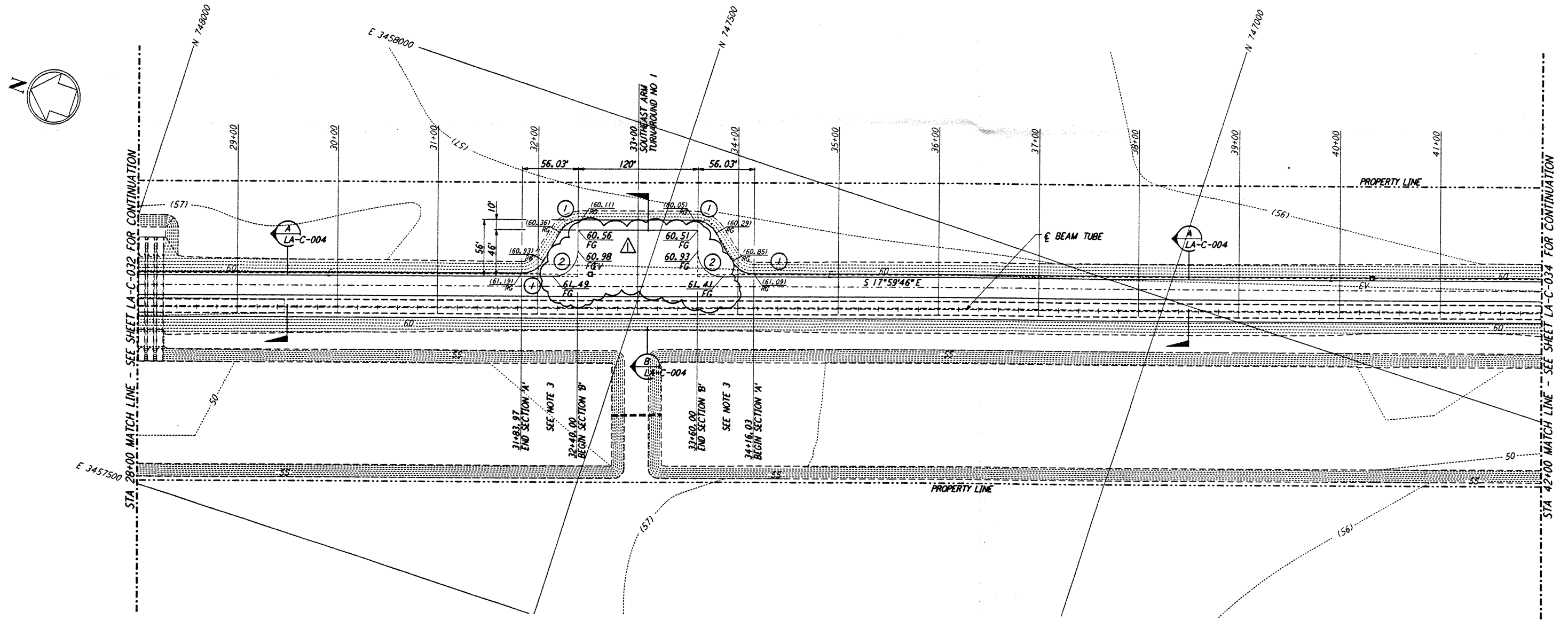


NOTES:

1. SEE SHEET LA-C-002 FOR GENERAL NOTES, LEGEND AND ABBREVIATIONS.
2. SEE SHEET LA-C-004 FOR TYPICAL SECTIONS AND DETAILS.
3. TRANSITIONS BETWEEN SECTIONS, AS SHOWN ON PLANS, FROM EDGE OF BITUMINOUS SURFACE SLOPE TO EXISTING GRADE.

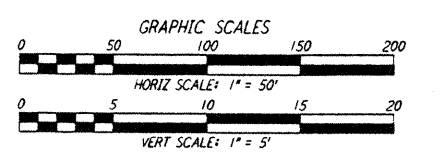
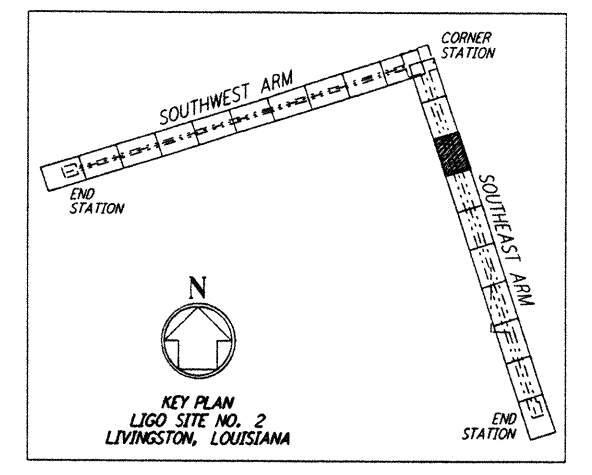


PROFILE
 SCALES: HORIZ: 1" = 50'
 VERT: 1" = 5'



PLAN
 SCALE: 1" = 50'

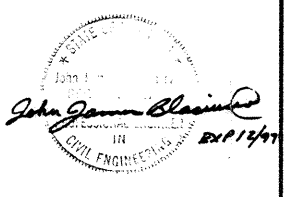
CURVE DATA				
Δ	RADIUS	LENGTH	TANGENT	
1	60°00'00"	25'	26.18'	14.43'
2	90°00'00"	25'	39.27'	25.00'



LIGO-D960847-01-0

NO.	DATE	BY	CHKD	ENGR	PROJ	DESCRIPTION
1	2-3-97	WRB	CL	JB	TDM	REVISED FIN GRADES, PROFILE ELEV

ISSUED FOR CONSTRUCTION		
DRAWN	WRB	11-15-96
CHECKED	ML	11-15-96
ENGINEER	JB	11-15-96
PROJ	TDM	11-15-96



PARSONS
 100 WEST WALNUT STREET
 PASADENA, CALIFORNIA

LIGO
 CALIFORNIA INSTITUTE OF TECHNOLOGY
 MASSACHUSETTS INSTITUTE OF TECHNOLOGY

LASER INTERFEROMETER
 GRAVITATIONAL-WAVE OBSERVATORY
 SITE NO. 2 - LIVINGSTON, LOUISIANA

CIVIL
 SOUTHWEST ARM
 PLAN AND PROFILE
 STA 28+00 TO STA 42+00

AS NOTED PPI 50969 8094
LA-C-033

This document and the design it covers are the property of PARSONS. They are loaned only with the borrower's expressed written agreement that they will not be reproduced, copied, loaned, exhibited, or used in any other way, except by written consent from PARSONS to the borrower.

MON FEB 03 16:21:20 1997 537.9662 JAVELIN\BUREAU\YORK\B23347P

MON FEB 03 16:21:20 1997 537.9662 JAVELIN\BUREAU\YORK\B23347P