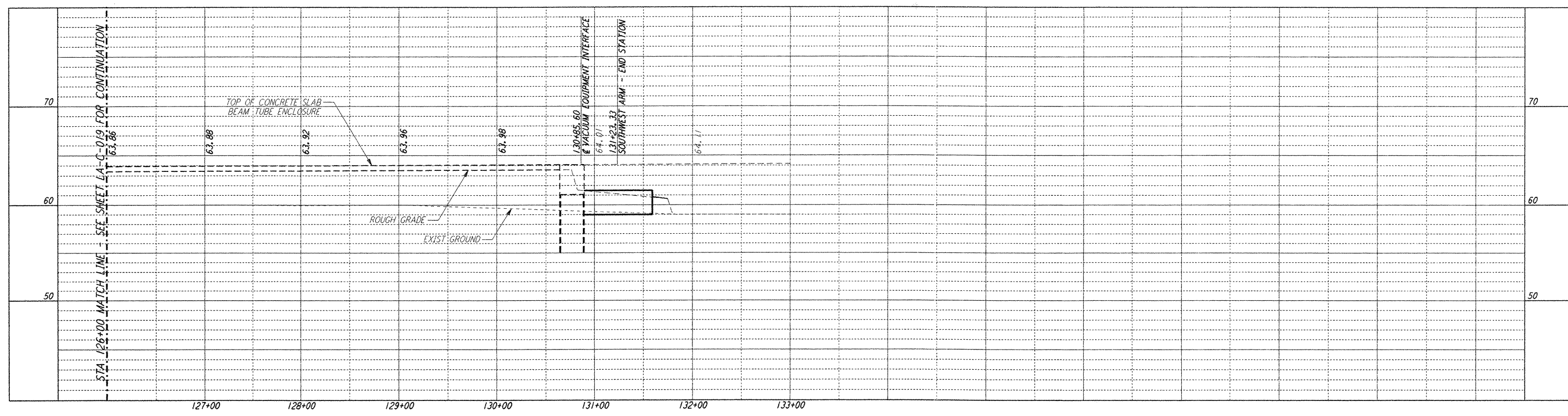
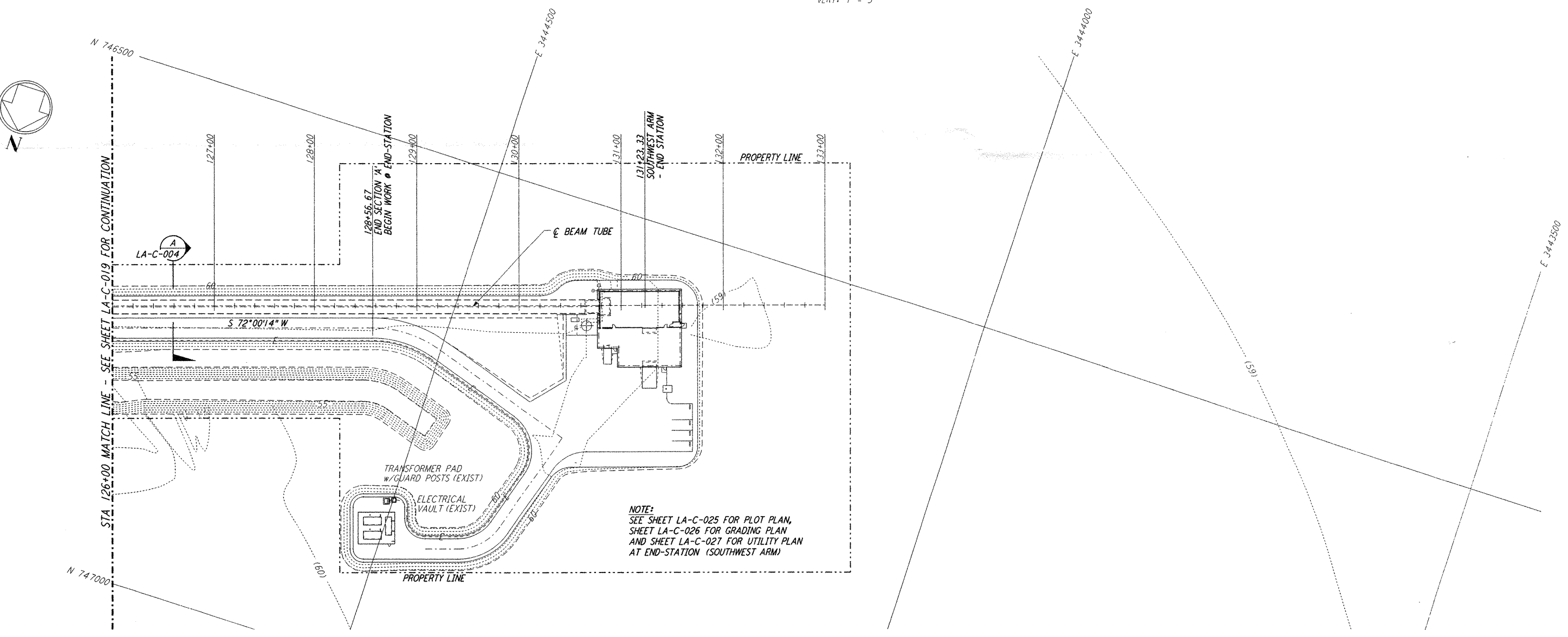


**NOTES:**

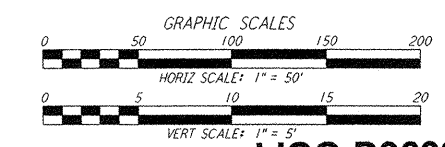
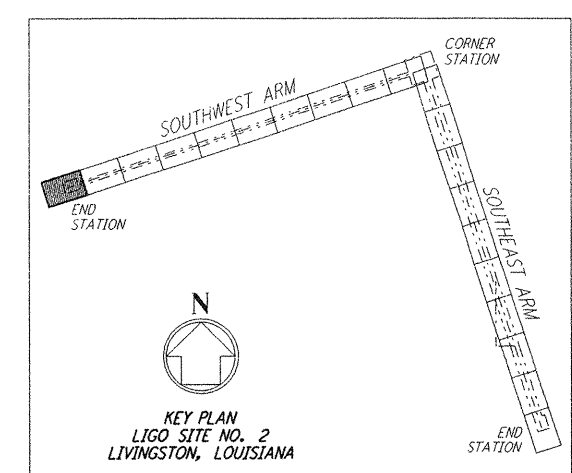
1. SEE SHEET LA-C-002 FOR GENERAL NOTES, LEGEND AND ABBREVIATIONS.
2. SEE SHEET LA-C-004 FOR TYPICAL SECTIONS AND DETAILS.



**PROFILE**  
 SCALES: HORIZ: 1" = 50'  
 VERT: 1" = 5'



**PLAN**  
 SCALE: 1" = 50'



**LIGO-D960838-02-0**

NO.	DATE	BY	CHKD	ENGR	PROJ	DESCRIPTION
2	08-07-98	WRB	(initials)	WRB	ML	ISSUED FOR AS-BUILT
1	2-3-97	WRB	ML	JIB	TDM	REVISED PROFILE ELEVATIONS

ISSUED FOR CONSTRUCTION		
DRAWN	WRB	11-15-96
CHECKED	ML	11-15-96
ENGINEER	JIB	11-15-96
PROJ	TDM	11-15-96

**AS-BUILT DRAWINGS**

**PARSONS**  
 100 WEST WALNUT STREET  
 PASADENA, CALIFORNIA

**LIGO**  
 CALIFORNIA INSTITUTE OF TECHNOLOGY  
 MASSACHUSETTS INSTITUTE OF TECHNOLOGY

LASER INTERFEROMETER  
 GRAVITATIONAL-WAVE OBSERVATORY  
 SITE NO. 2 - LIVINGSTON, LOUISIANA

TITLE: CIVIL  
 SOUTHWEST ARM  
 PLAN AND PROFILE  
 STA 126+00 TO STA 133+00

PROJECT NUMBER: AS NOTED PP150969  
 SHEET NUMBER: 8094  
 REVISIONS: LA-C-020

This document and the design it covers are the property of PARSONS. They are loaned only with the borrower's expressed written agreement that they will not be reproduced, copied, loaned, exhibited, or used in any other way, except by written consent from PARSONS to the borrower.

Sun Aug 23 21:26:19 1998 C:\PLOT\JOB\53\T5822467 52895 K:\T5822467\ce\lap020.dwg L1GOLAF 3.BDR