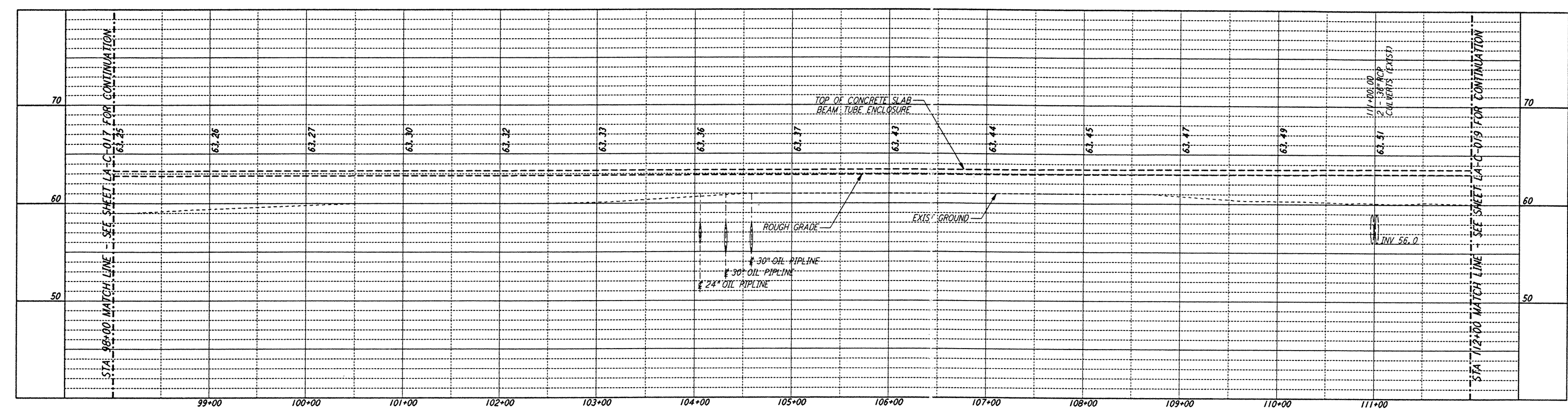
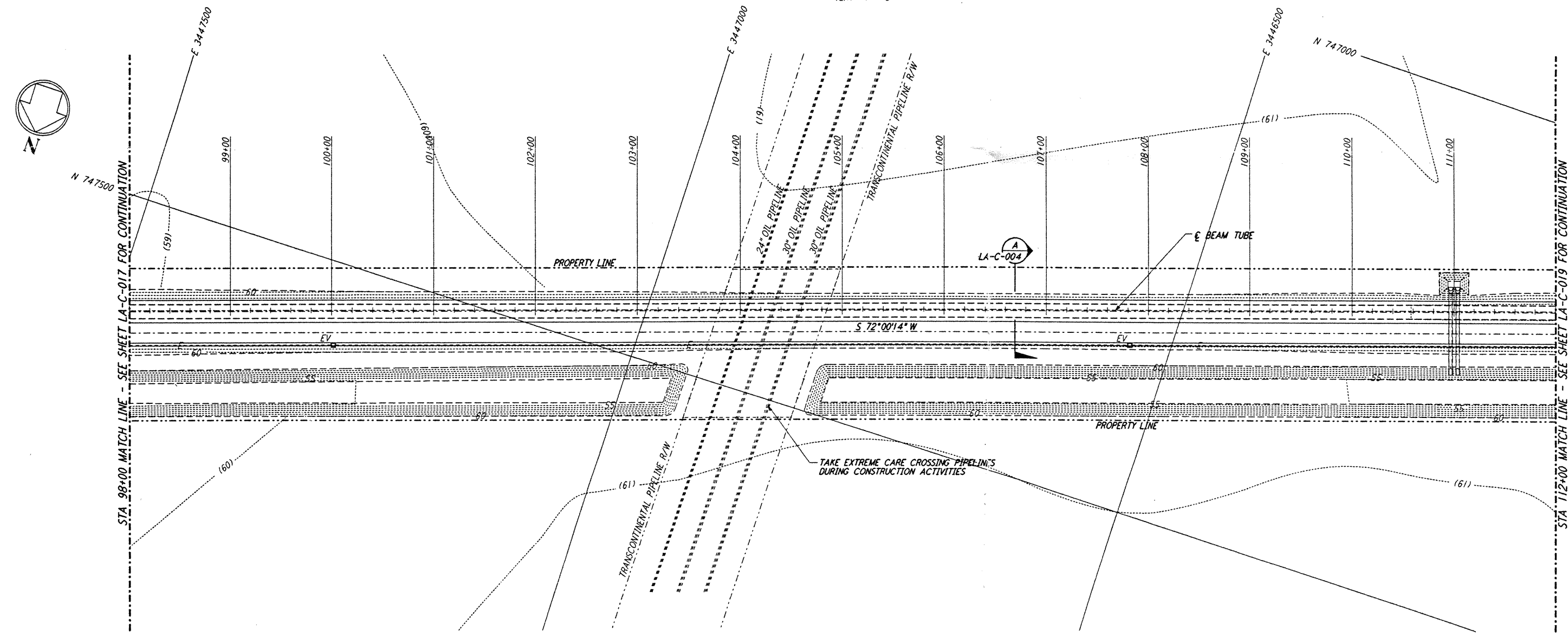


- NOTES:**
- SEE SHEET LA-C-002 FOR GENERAL NOTES, LEGEND AND ABBREVIATIONS.
  - SEE SHEET LA-C-004 FOR TYPICAL SECTIONS AND DETAILS.

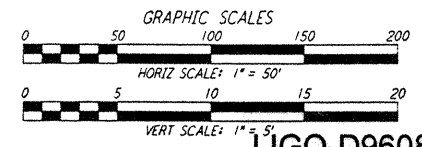
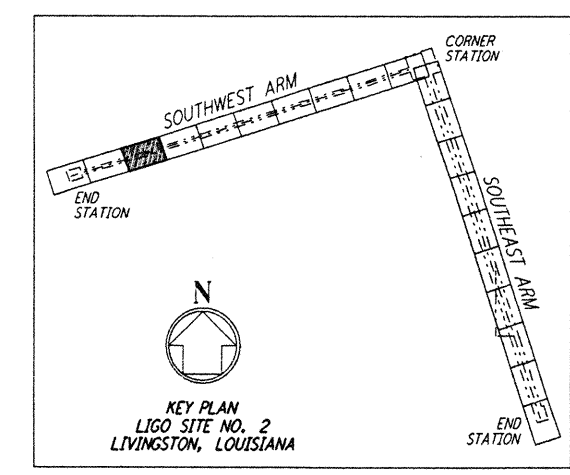


**PROFILE**  
 SCALES: HORIZ: 1" = 50'  
 VERT: 1" = 5'



**PLAN**  
 SCALE: 1" = 50'

**NOTE:**  
 LIGO SOUTHWEST ARM CROSSING OF TRANSCONTINENTAL PIPELINE R/W OCCURS WITHIN LIVINGSTON PARRISH, LOUISIANA, TOWNSHIP 6 SOUTH - RANGE 4 EAST, SECTION 4.



LIGO-D960836-A-0

NO.	DATE	BY	CHKD	ENGR	PROJ	DESCRIPTION
A	6/14/96	WRB				FINAL DESIGN REVIEW

DRAWN	WRB
CHECKED	
ENGINEER	
PROJ	

**PARSONS**  
 100 WEST WALNUT STREET  
 PASADENA, CALIFORNIA

**LIGO**  
 CALIFORNIA INSTITUTE OF TECHNOLOGY  
 MASSACHUSETTS INSTITUTE OF TECHNOLOGY

LASER INTERFEROMETER  
 GRAVITATIONAL-WAVE OBSERVATORY  
 SITE NO. 2 - LIVINGSTON, LOUISIANA

CIVIL  
 SOUTHWEST ARM  
 PLAN AND PROFILE  
 STA 98+00 TO STA 112+00

AS NOTED PP 150969 8094  
**LA-C-018**

This document and the design it covers are the property of PARSONS. They are loaned only with the borrower's expressed written agreement that they will not be reproduced, copied, loaned, exhibited, or used in any other way, except by written consent from PARSONS to the borrower.