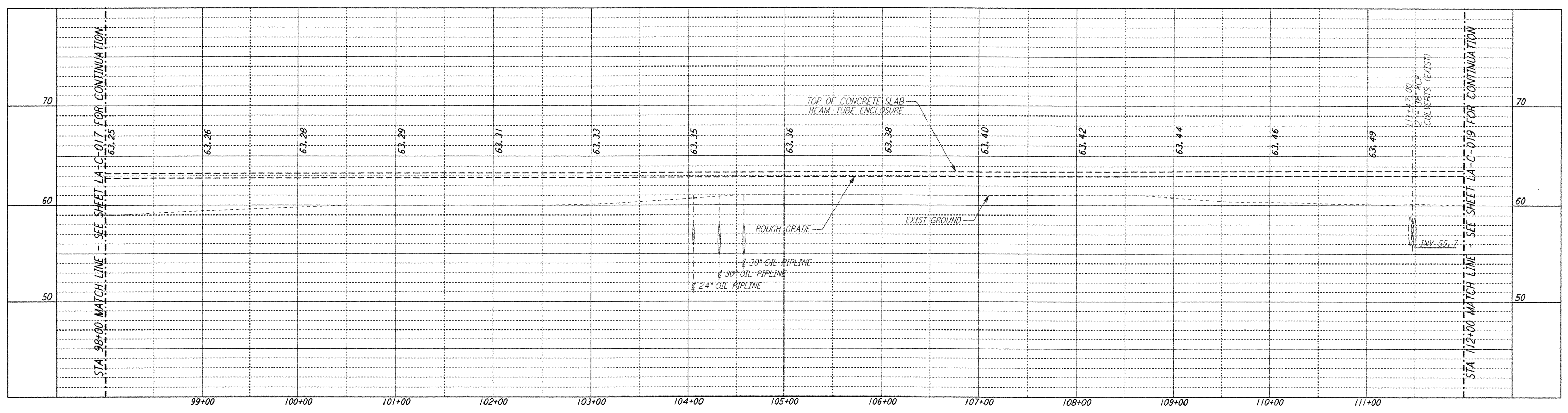
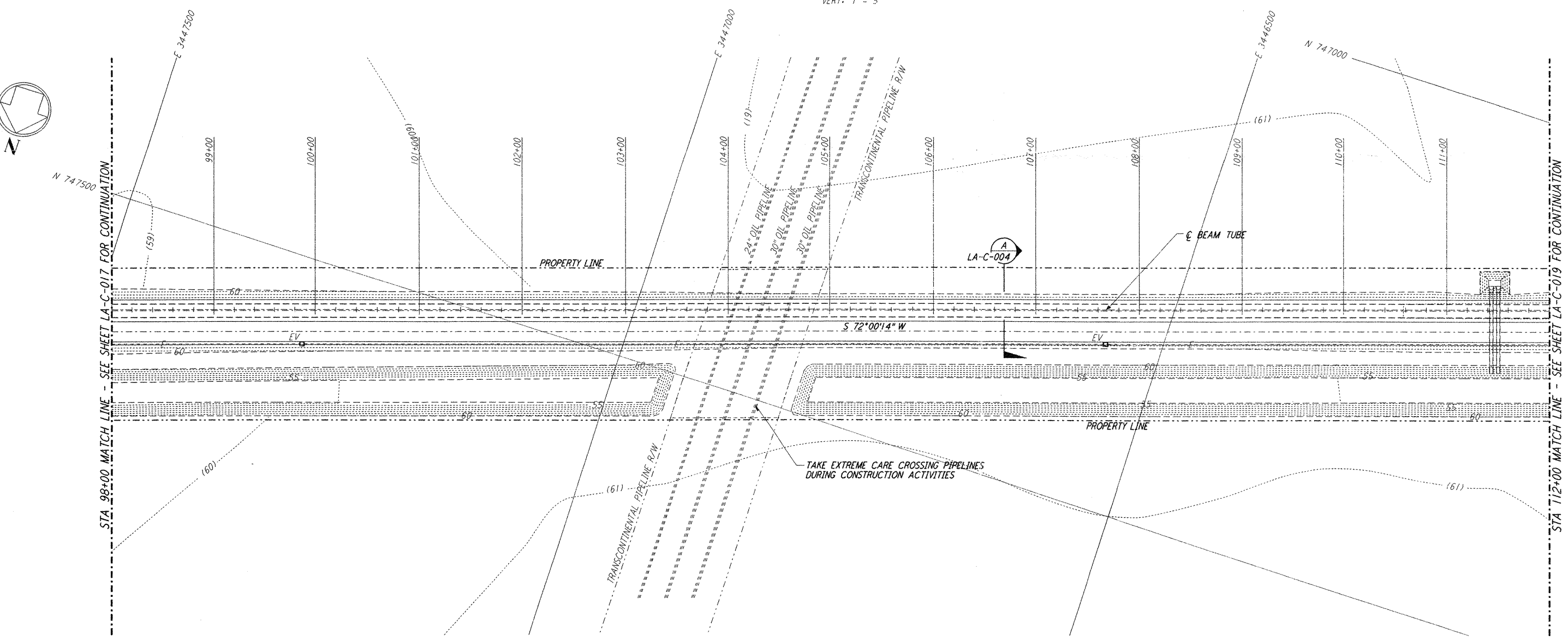


NOTES:
 1. SEE SHEET LA-C-002 FOR GENERAL NOTES, LEGEND AND ABBREVIATIONS.
 2. SEE SHEET LA-C-004 FOR TYPICAL SECTIONS AND DETAILS.

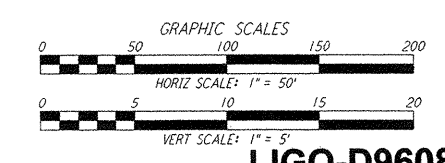
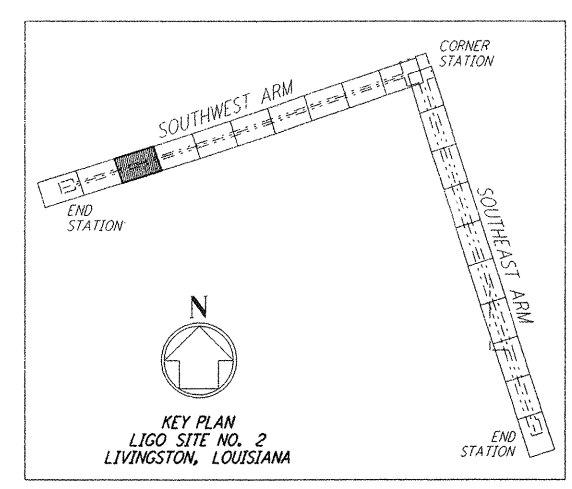


PROFILE
 SCALES: HORIZ: 1" = 50'
 VERT: 1" = 5'



PLAN
 SCALE: 1" = 50'

NOTE:
 LIGO SOUTHWEST ARM CROSSING OF TRANSCONTINENTAL PIPELINE R/W OCCURS WITHIN LIVINGSTON PARRISH, LOUISIANA, TOWNSHIP 6 SOUTH - RANGE 4 EAST, SECTION 4.



LIGO-D960836-02-O

LASER INTERFEROMETER GRAVITATIONAL-WAVE OBSERVATORY SITE NO. 2 - LIVINGSTON, LOUISIANA

CIVIL SOUTHWEST ARM PLAN AND PROFILE STA 98+00 TO STA 112+00

AS NOTED PP150969 8094

LA-C-018

PARSONS

100 WEST WALNUT STREET PASADENA, CALIFORNIA

LIGO

CALIFORNIA INSTITUTE OF TECHNOLOGY MASSACHUSETTS INSTITUTE OF TECHNOLOGY

ISSUED FOR CONSTRUCTION	
DRAWN	WRB 11-15-96
CHECKED	ML 11-15-96
ENGINEER	JB 11-15-96
PROJ	TDM 11-15-96
AS-BUILT DRAWINGS	

NO.	DATE	BY	CHKD	ENGR	PROJ	DESCRIPTION
2	08-07-98	WRB	ML	JB	MW	ISSUED FOR AS-BUILT
1	2-3-97	WRB	ML	JB	TDM	REVISED PROFILE ELEVATIONS

DRAWING NO.	DESCRIPTION

This document and the design it covers are the property of PARSONS. They are loaned only with the borrower's expressed written agreement that they will not be reproduced, copied, loaned, exhibited, or used in any other way, except by written consent from PARSONS to the borrower.