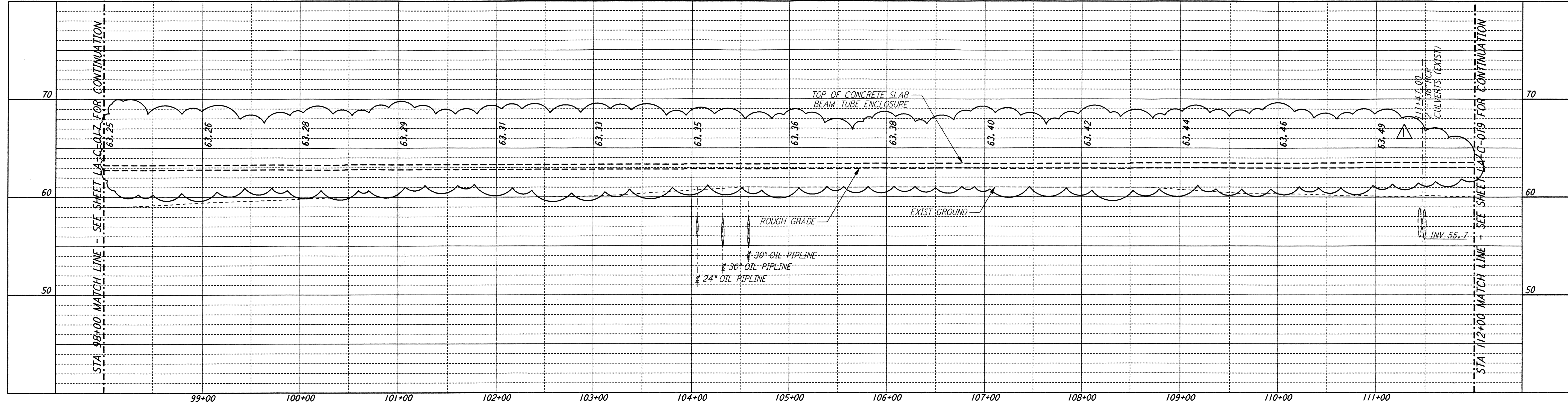
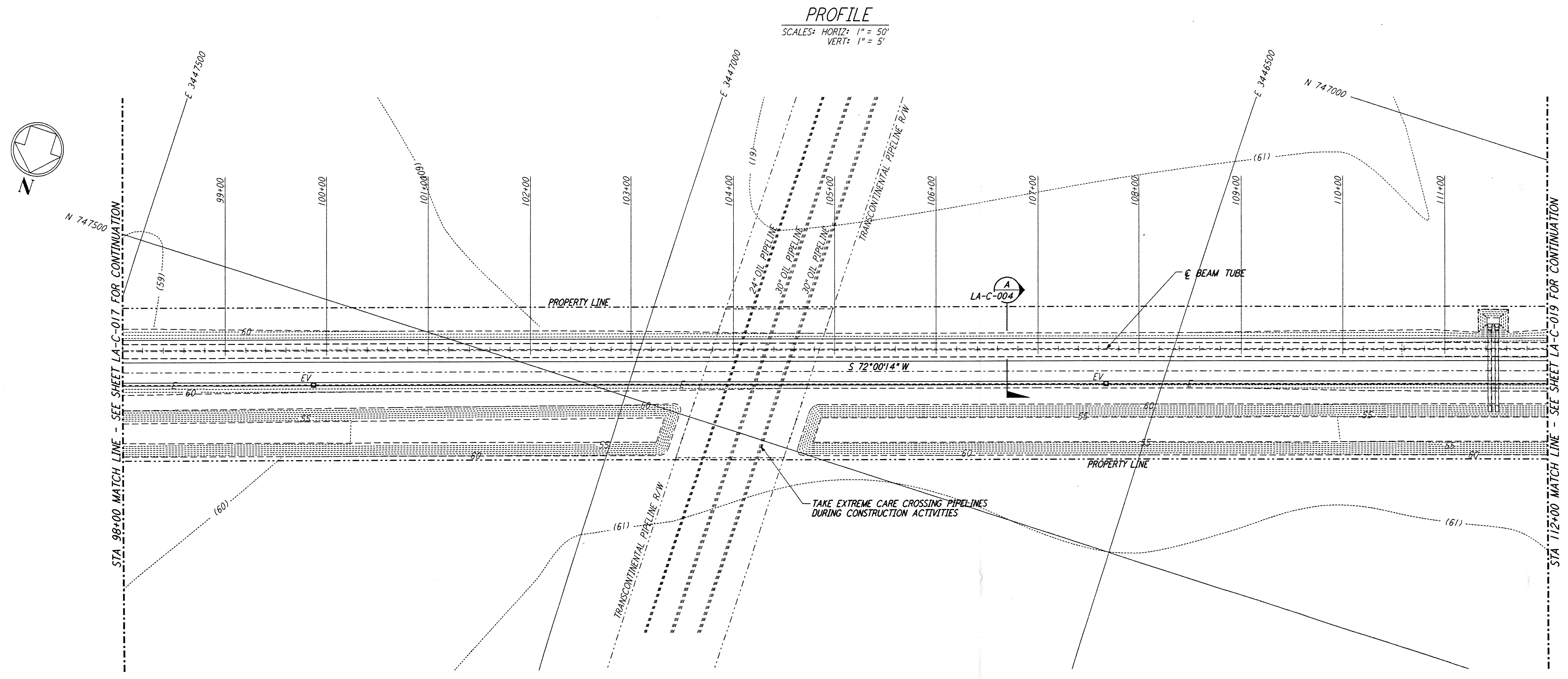


not be reproduced, copied, loaned, exhibited, or used in any other way, except by written consent from PARSONS to the borrower.

This document and the design it covers are the property of PARSONS. They are loaned only with the borrower's expressed written agreement that they will



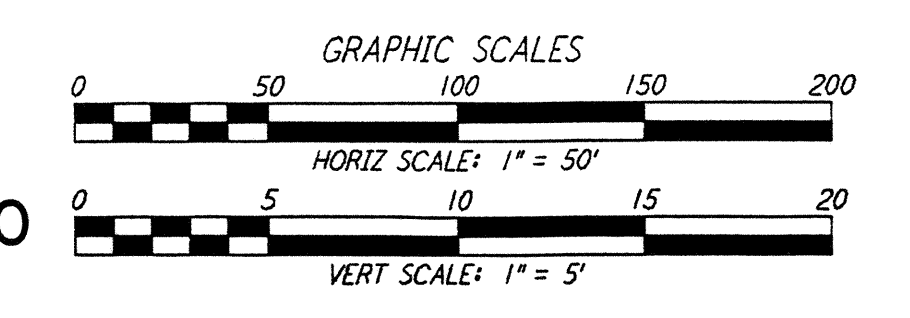
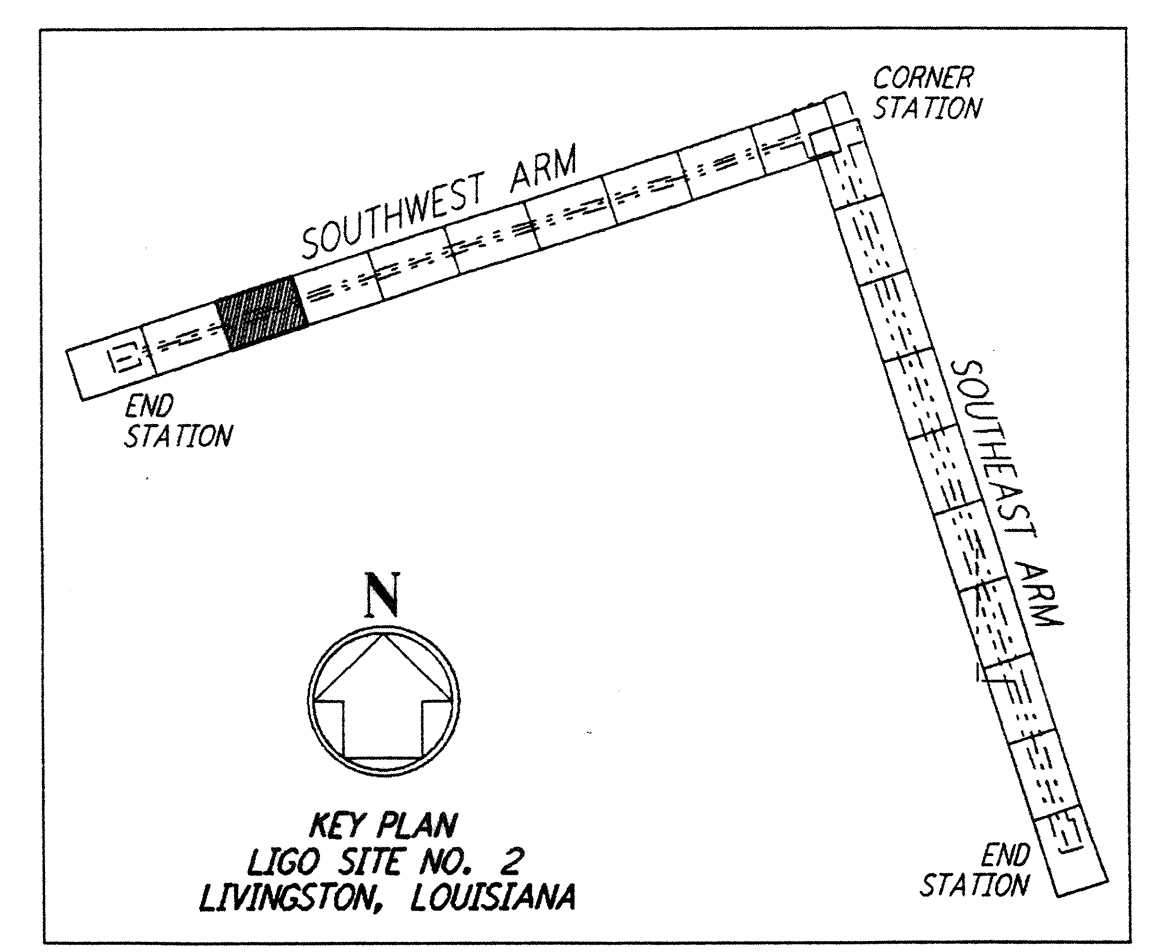
- NOTES:**
- SEE SHEET LA-C-002 FOR GENERAL NOTES, LEGEND AND ABBREVIATIONS.
 - SEE SHEET LA-C-004 FOR TYPICAL SECTIONS AND DETAILS.



PROFILE
 SCALES: HORIZ: 1" = 50'
 VERT: 1" = 5'

PLAN
 SCALE: 1" = 50'

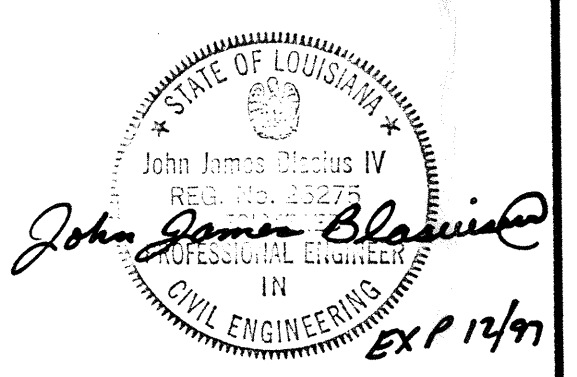
NOTE:
 LIGO SOUTHWEST ARM CROSSING OF TRANSCONTINENTAL PIPELINE R/W OCCURS WITHIN LIVINGSTON PARRISH, LOUISIANA, TOWNSHIP 6 SOUTH - RANGE 4 EAST, SECTION 4.



LIGO-D960836-01-0

NO.	DATE	BY	CHKD	ENGR	PROJ	DESCRIPTION
1	2-3-97	WRB	CL	JB	TDM	REVISED PROFILE ELEVATIONS

NO.	DATE	BY	CHKD	ENGR	PROJ	DESCRIPTION
1	11-15-96	WRB				ISSUED FOR CONSTRUCTION
2	11-15-96	ML				CHECKED
3	11-15-96	JB				ENGINEER
4	11-15-96	TDM				PROJ



PARSONS
 100 WEST WALNUT STREET
 PASADENA, CALIFORNIA

LIGO
 CALIFORNIA INSTITUTE OF TECHNOLOGY
 MASSACHUSETTS INSTITUTE OF TECHNOLOGY

LASER INTERFEROMETER GRAVITATIONAL-WAVE OBSERVATORY SITE NO. 2 - LIVINGSTON, LOUISIANA

TITLE	SCALE	CONTRACT NUMBER	PROJECT NUMBER
CIVIL SOUTHWEST ARM PLAN AND PROFILE STA 98+00 TO STA 112+00	AS NOTED	PP150969	8094
LA-C-018			