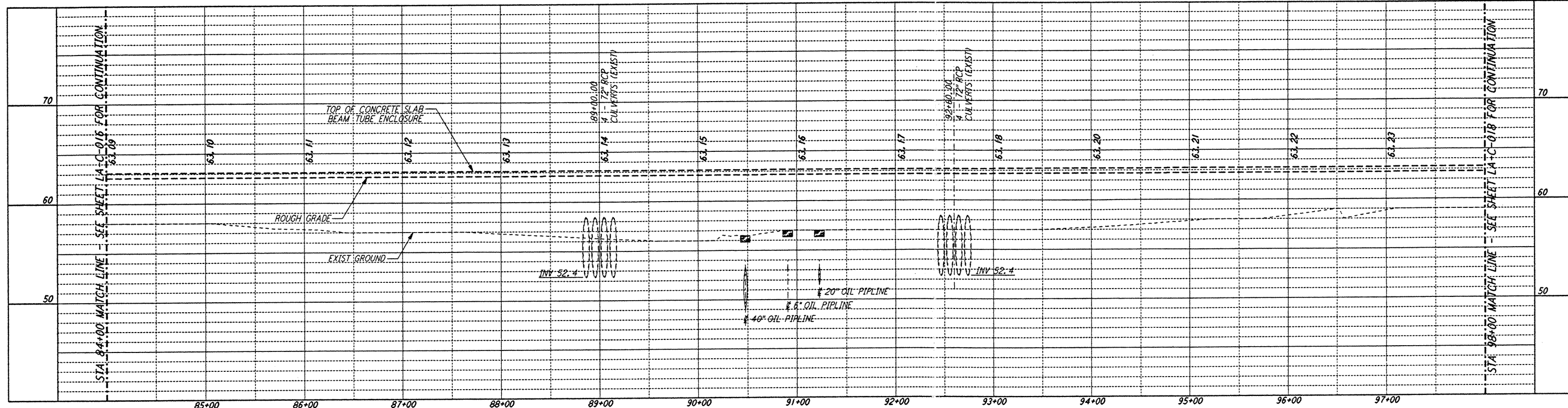
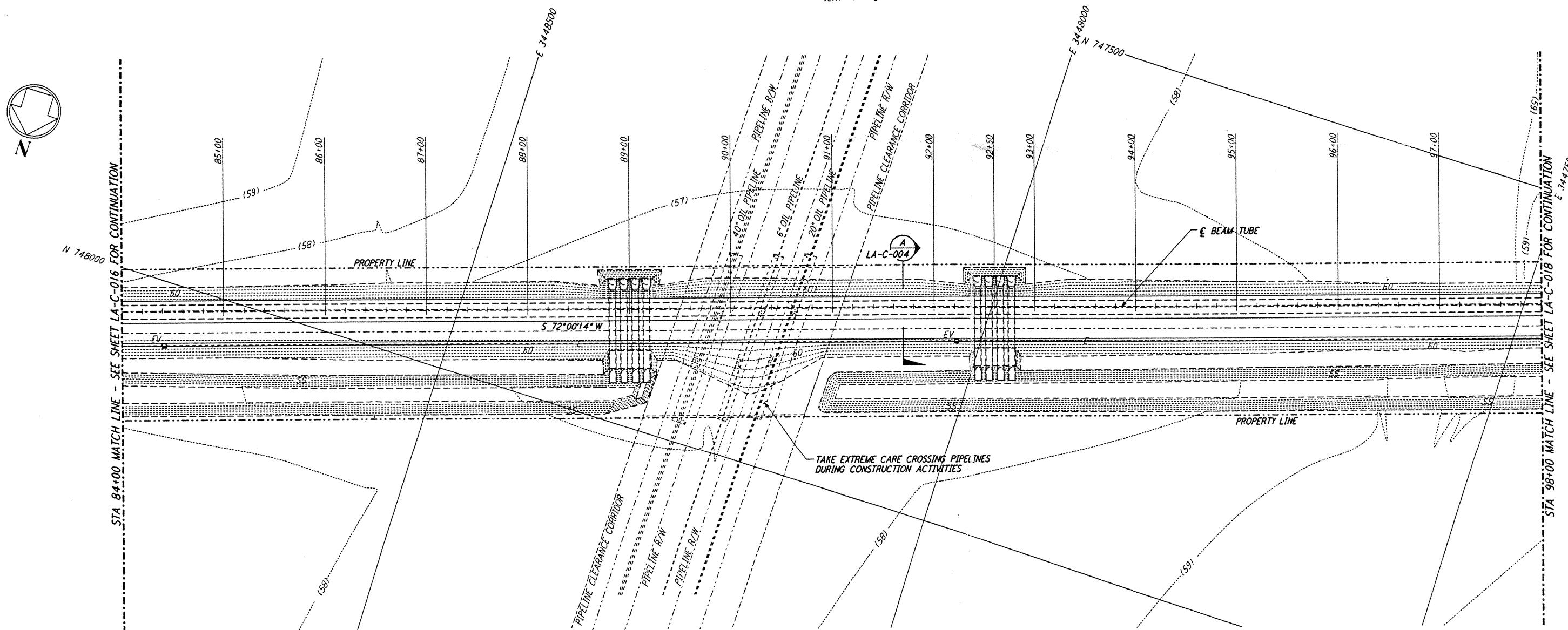


- NOTES:**
- SEE SHEET LA-C-002 FOR GENERAL NOTES, LEGEND AND ABBREVIATIONS.
 - SEE SHEET LA-C-004 FOR TYPICAL SECTIONS AND DETAILS.

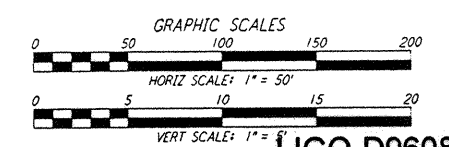
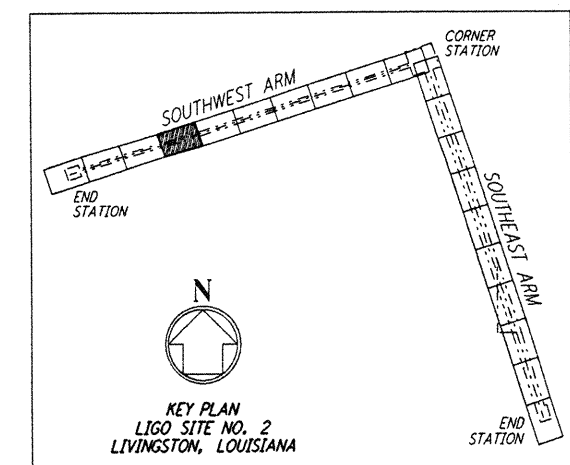


PROFILE
 SCALES: HORIZ: 1" = 50'
 VERT: 1" = 5'



PLAN
 SCALE: 1" = 50'

NOTE:
 LIGO SOUTHWEST ARM CROSSING OF SHELL PIPELINE R/W OCCURS WITHIN LIVINGSTON PARRISH, LOUISIANA, TOWNSHIP 6 SOUTH - RANGE 4 EAST, SECTION 3.



LIGO-D960835-A-O

LASER INTERFEROMETER GRAVITATIONAL-WAVE OBSERVATORY SITE NO. 2 - LIVINGSTON, LOUISIANA

CIVIL SOUTHWEST ARM PLAN AND PROFILE STA 84+00 TO STA 98+00

AS NOTED PP 150969 8094

LA-C-017

PARSONS
 100 WEST WALNUT STREET
 PASADENA, CALIFORNIA

LIGO
 CALIFORNIA INSTITUTE OF TECHNOLOGY
 MASSACHUSETTS INSTITUTE OF TECHNOLOGY

DRAWN	WRB
CHECKED	
ENGINEER	
PROJ	

NO.	DATE	BY	CHKD	ENGR	PROJ	DESCRIPTION
A	6/14/96	WRB				FINAL DESIGN REVIEW

DRAWING NO.	DESCRIPTION

This document and the design it covers are the property of PARSONS. They are loaned only with the borrower's expressed written agreement that they will not be reproduced, copied, loaned, exhibited, or used in any other way, except by written consent from PARSONS to the borrower.

13 JUN 1996 11:25:00 AM S:\V\BDC\PROJECTS\LIGO\LA-C-017\LA-C-017.DWG