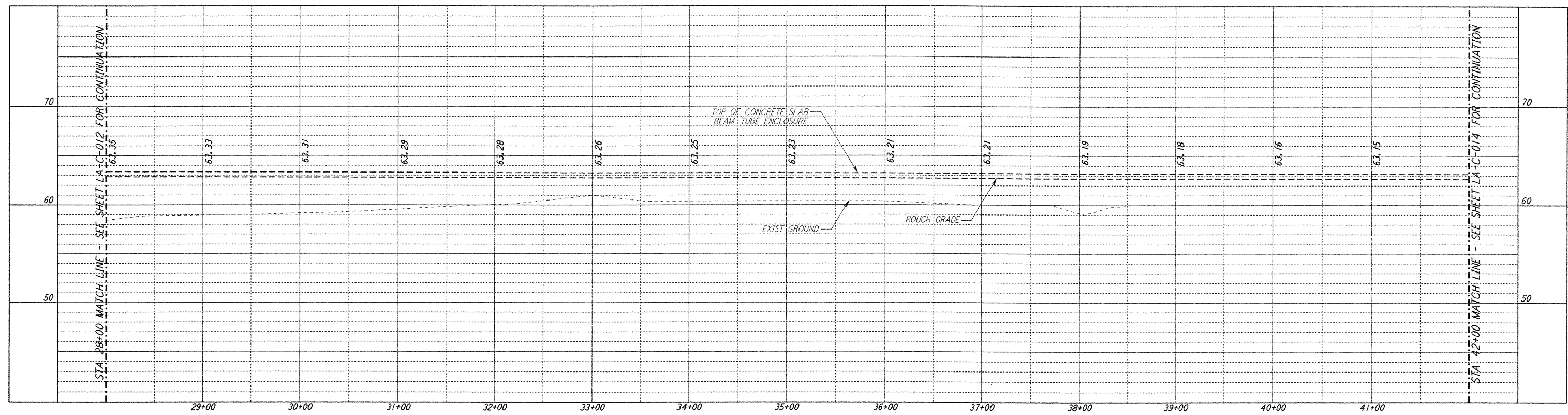
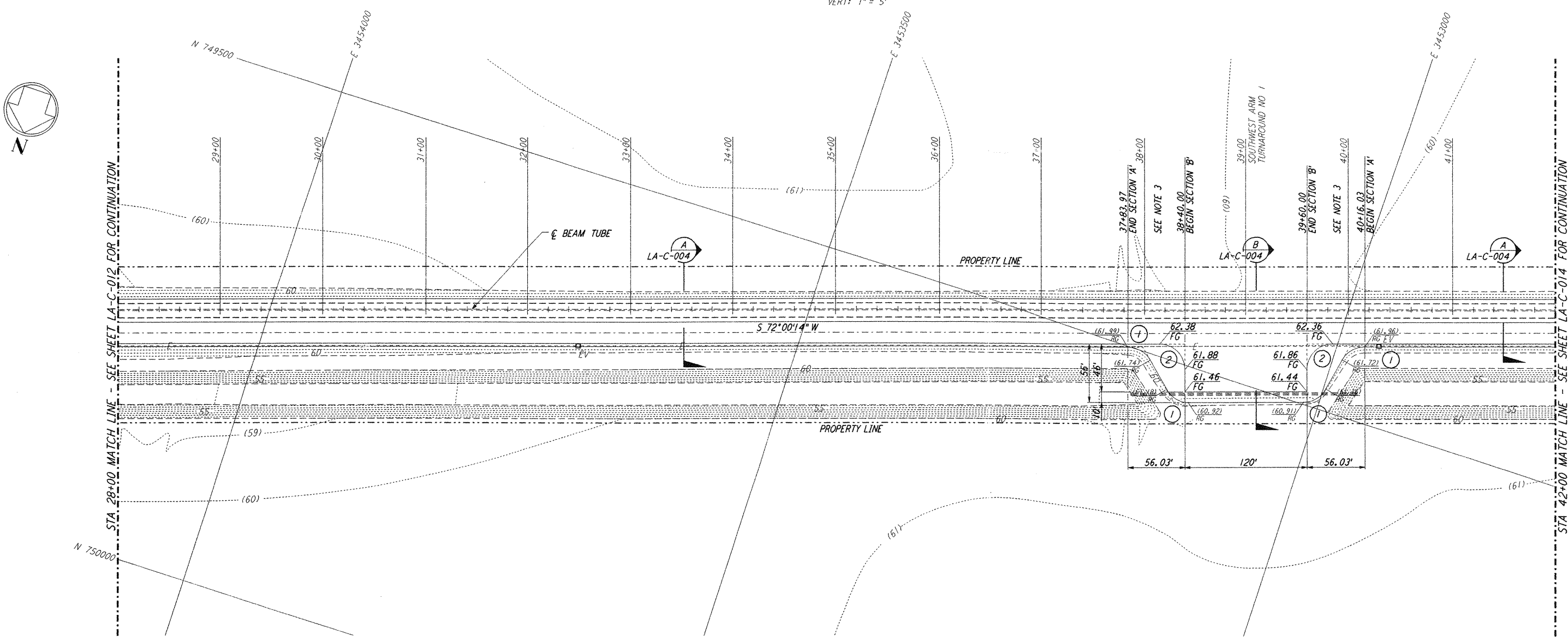


- NOTES:**
- SEE SHEET LA-C-002 FOR GENERAL NOTES, LEGEND AND ABBREVIATIONS.
  - SEE SHEET LA-C-004 FOR TYPICAL SECTIONS AND DETAILS.
  - TRANSITIONS BETWEEN SECTIONS, AS SHOWN ON PLANS, FROM EDGE OF BITUMINOUS SURFACE SLOPE TO EXISTING GRADE.

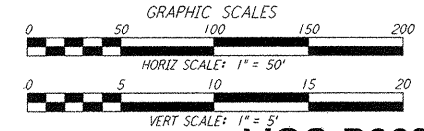
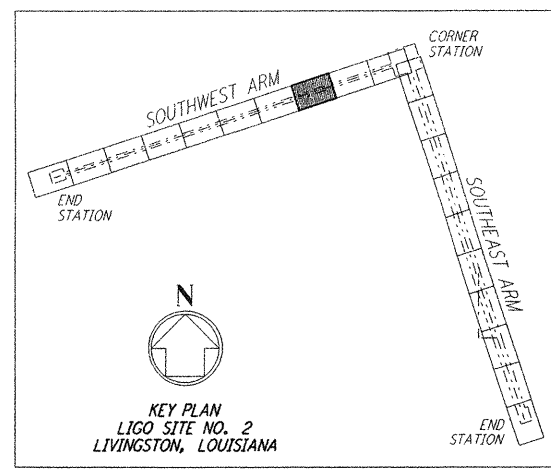


**PROFILE**  
 SCALES: HORIZ: 1" = 50'  
 VERT: 1" = 5'



**PLAN**  
 SCALE: 1" = 50'

| CURVE DATA |           |        |         |        |
|------------|-----------|--------|---------|--------|
| Δ          | RADIUS    | LENGTH | TANGENT |        |
| 1          | 60°00'00" | 25'    | 26.18'  | 14.43' |
| 2          | 90°00'00" | 25'    | 39.27'  | 25.00' |



**LIGO-D960831-02-0**

LASER INTERFEROMETER  
 GRAVITATIONAL-WAVE OBSERVATORY  
 SITE NO. 2 - LIVINGSTON, LOUISIANA

|  |           |                 |                |
|--|-----------|-----------------|----------------|
| TITLE  | SCALE     | CONTRACT NUMBER | PROJECT NUMBER |
| CIVIL<br>SOUTHWEST ARM<br>PLAN AND PROFILE<br>STA 28+00 TO STA 42+00 | AS NOTED  | PP150969        | 8094           |
| SHEET NUMBER   | REVISIONS |                 |                |
| <b>LA-C-013</b>  |           |                 |                |

**PARSONS**  
 100 WEST WALNUT STREET  
 PASADENA, CALIFORNIA

**LIGO**  
 CALIFORNIA INSTITUTE OF TECHNOLOGY  
 MASSACHUSETTS INSTITUTE OF TECHNOLOGY

ISSUED FOR CONSTRUCTION

|          |     |          |
|----------|-----|----------|
| DRAWN    | WRB | 11-15-96 |
| CHECKED  | ML  | 11-15-96 |
| ENGINEER | JB  | 11-15-96 |
| PROJ     | TDM | 11-15-96 |

**AS-BUILT DRAWINGS**

| NO. | DATE     | BY  | CHKD | ENGR | PROJ | DESCRIPTION                |
|-----|----------|-----|------|------|------|----------------------------|
| 2   | 08-07-98 | WRB | ML   | YB   | KWU  | ISSUED FOR AS-BUILT        |
| 1   | 2-3-97   | WRB | ML   | JB   | TDM  | REVISED PROFILE ELEVATIONS |

This document and the design it covers are the property of PARSONS. They are loaned only with the borrower's expressed written agreement that they will not be reproduced, copied, loaned, exhibited, or used in any other way, except by written consent from PARSONS to the borrower.