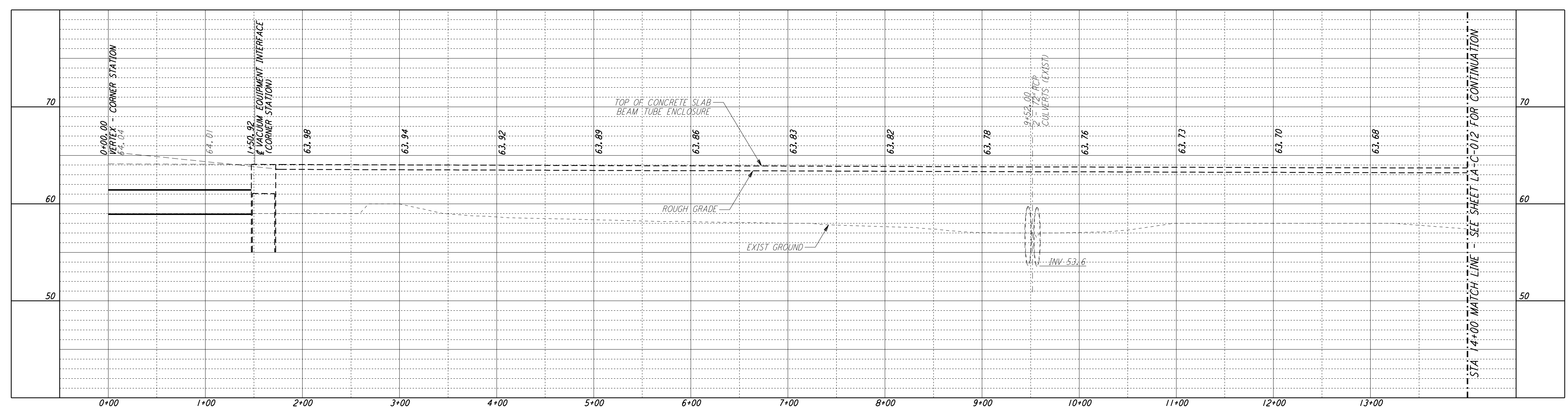
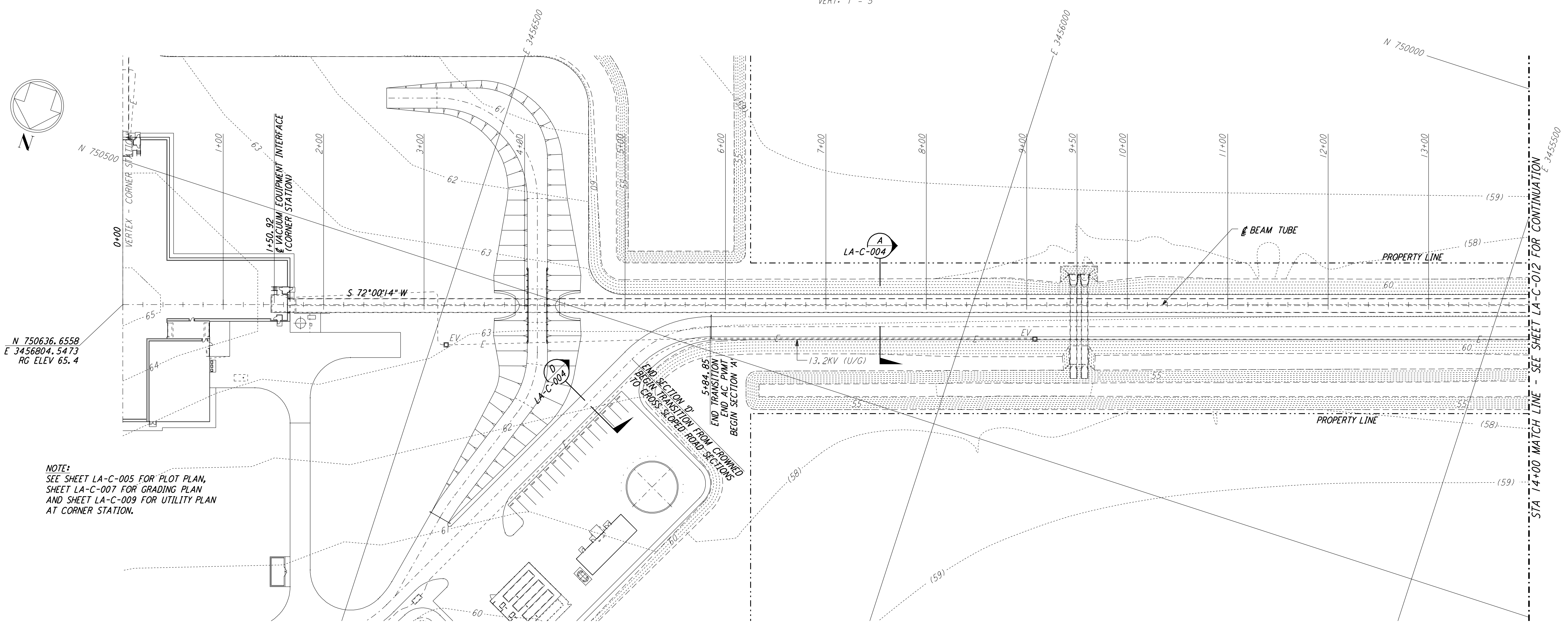


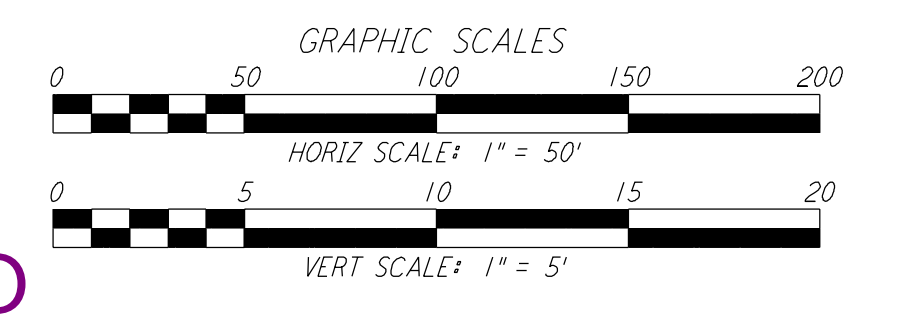
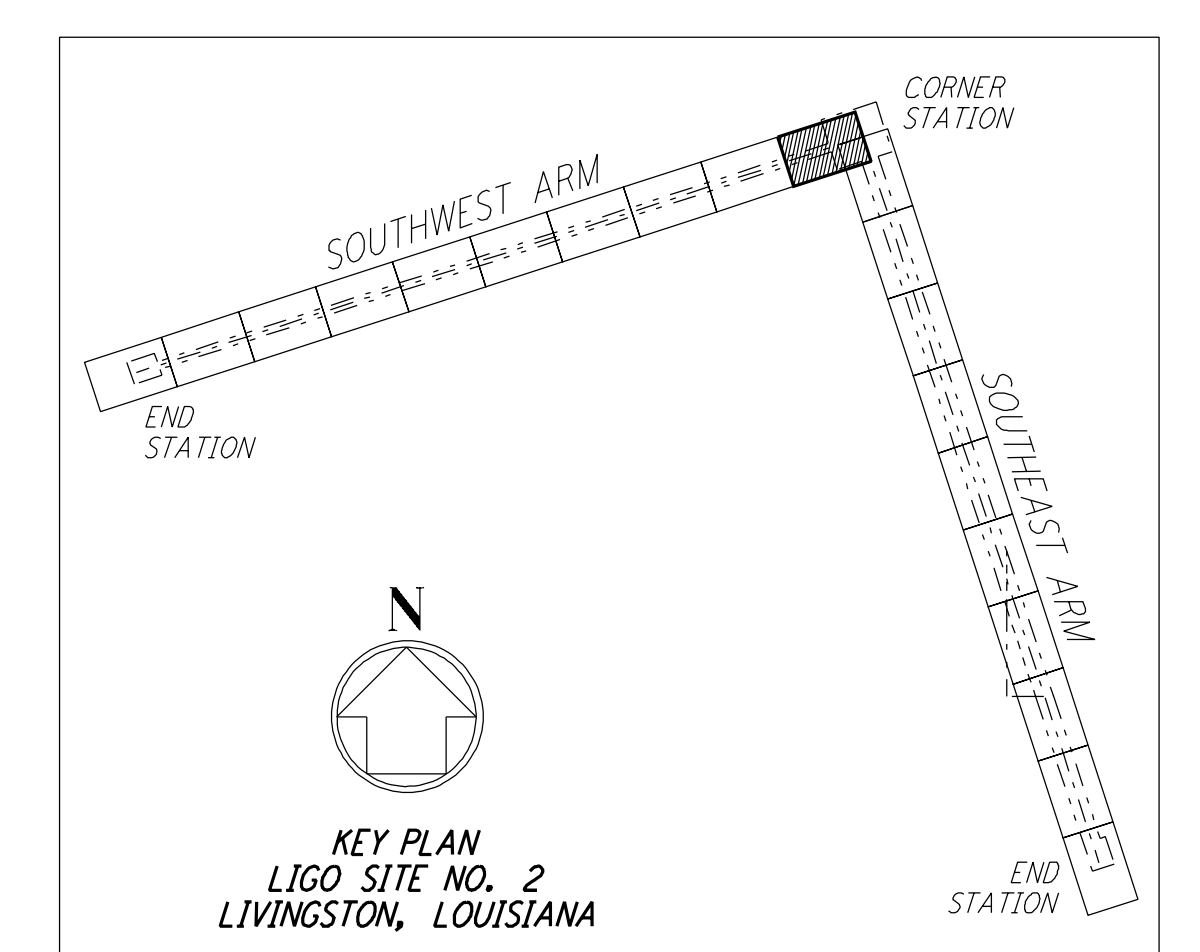
- NOTES:**
- SEE SHEET LA-C-002 FOR GENERAL NOTES, LEGEND AND ABBREVIATIONS.
 - SEE SHEET LA-C-004 FOR TYPICAL SECTIONS AND DETAILS.



PROFILE
 SCALES: HORIZ: 1" = 50'
 VERT: 1" = 5'



PLAN
 SCALE: 1" = 50'



LIGO-D960829-02-0

| NO. | DATE | BY | CHKD | ENGR | PROJ | DESCRIPTION |
|-----|----------|-----|------|------|------|----------------------------|
| 2 | 08-07-98 | WRB | | | | ISSUED FOR AS-BUILT |
| 1 | 2-3-97 | WRB | ML | JB | TDM | REVISED PROFILE ELEVATIONS |

| ISSUED FOR CONSTRUCTION | | | |
|-------------------------|-----|----------|--|
| DRAWN | WRB | 11-15-96 | |
| CHECKED | ML | 11-15-96 | |
| ENGINEER | JB | 11-15-96 | |
| PROJ | TDM | 11-15-96 | |

AS-BUILT DRAWINGS

PARSONS
 100 WEST WALNUT STREET
 PASADENA, CALIFORNIA

LIGO
 CALIFORNIA INSTITUTE OF TECHNOLOGY
 MASSACHUSETTS INSTITUTE OF TECHNOLOGY

LASER INTERFEROMETER
 GRAVITATIONAL-WAVE OBSERVATORY
 SITE NO. 2 - LIVINGSTON, LOUISIANA

CIVIL
 SOUTHWEST ARM
 PLAN AND PROFILE
 STA 0+00 TO STA 14+00

SCALE AS NOTED
 CONTRACT NUMBER PP150969
 PROJECT NUMBER 8094

LA-C-011

This document and the design it covers are the property of PARSONS. They are loaned only with the borrower's expressed written agreement that they will not be reproduced, copied, loaned, exhibited, or used in any other way, except by written consent from PARSONS to the borrower.

This document and the design it covers are the property of PARSONS. They are loaned only with the borrower's expressed written agreement that they will not be reproduced, copied, loaned, exhibited, or used in any other way, except by written consent from PARSONS to the borrower.