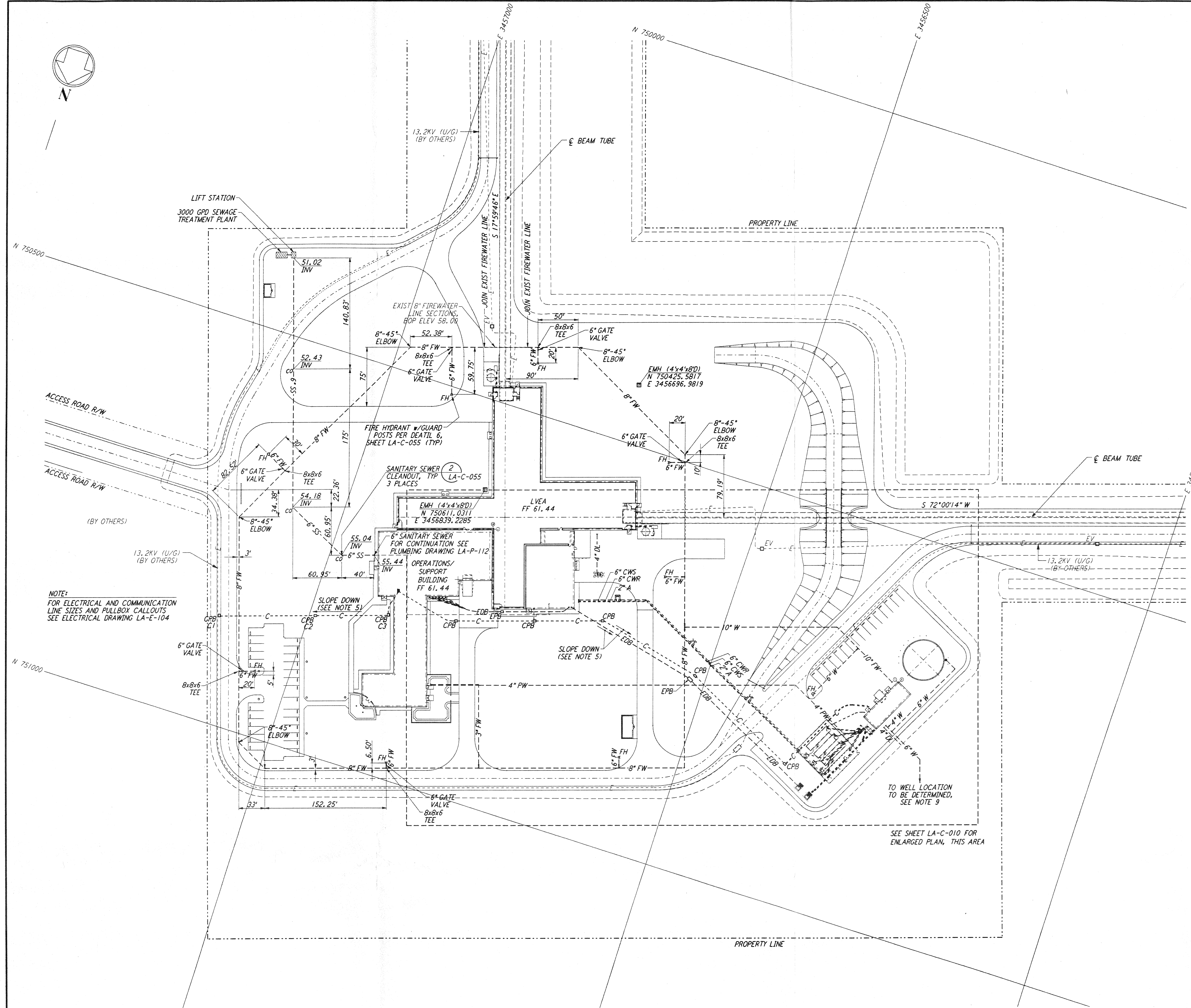


not be reproduced, copied, loaned, exhibited, or used in any other way, except by written consent from PARSONS to the borrower.

This document and the design it covers are the property of PARSONS. They are loaned only with the borrower's expressed written agreement that they will



NOTES:

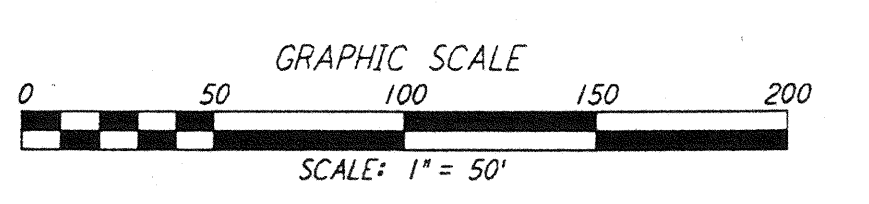
1. SEE SHEET LA-C-002 FOR GENERAL NOTES, LEGEND AND ABBREVIATIONS.
2. FOR PROPERTY CORNER LOCATIONS, SEE SHEET LA-C-001.
3. ALL DIMENSIONS SHOWN FOR COMMUNICATION AND ELECTRICAL PULLBOXES ARE INTERNAL DIMENSIONS, UNLESS NOTED OTHERWISE.
4. COMMUNICATIONS CONDUIT SHALL STUB-UP INSIDE THE ACCESS FLOOR TO AN ELEVATION THAT WILL PREVENT FLOODING OF CAVITY IF OUTDOOR UNDERGROUND CONDUIT RUNS ARE FILLED WITH WATER.
5. DUCT BANK SHALL SLOPE DOWN AWAY FROM BUILDING.
6. POLYETHYLENE PULL ROPES SHALL BE PROVIDED BETWEEN PULLBOXES AND STUB-UPS FOR EACH CONDUIT.
7. THRUST BLOCKS SHALL BE PROVIDED AT ALL BENDS AND TEES, FOR ALL PRESSURE LINES. SEE DETAIL 3, SHEET LA-C-055 FOR SIZES.
8. SEE DETAIL 5, SHEET LA-C-055 FOR TRENCH BEDDING REQUIREMENTS.
9. CONTRACTOR SHALL PROVIDE THE COMPLETE DESIGN, PROVIDE ALL EQUIPMENT AND MATERIALS, AND SHALL DRILL THE WATER WELL TO THE DEPTH NECESSARY TO ACHIEVE POTABLE QUALITY WATER. THE CONTRACTOR SHALL PROVIDE AND INSTALL THE POTABLE WATER PUMP AND NECESSARY ACCESSORIES TO PROVIDE A CONTINUOUS FLOW OF 125 GPM AT A MINIMUM OF 50 PSI AT THE PUMP OUTLET. CONTRACTOR SHALL OBTAIN ALL PERMITS AND INSPECTIONS NECESSARY FOR THE WATER WELL AND PUMP AND BE IN ACCORDANCE WITH THE LOUISIANA STATE DEPARTMENT OF HEALTH REQUIREMENTS.

CPB	COORDINATES	
	NORTH	EAST
C1	750865.5178	3457108.5226
C2	750828.5958	3456992.4351
C3	750799.7375	3456906.0257

NOTE: COORDINATES ARE TO THE CENTER OF PULL BOX.

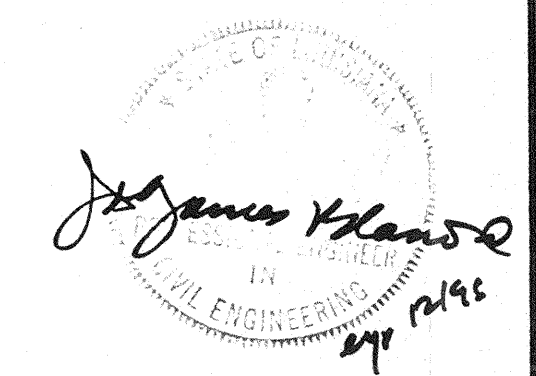
NOTE:
 FOR ELECTRICAL AND COMMUNICATION LINE SIZES AND PULLBOX CALLOUTS SEE ELECTRICAL DRAWING LA-E-104

TO WELL LOCATION TO BE DETERMINED, SEE NOTE 9
 SEE SHEET LA-C-010 FOR ENLARGED PLAN, THIS AREA



NO.	DATE	BY	CHKD	ENGR	PROJ.	DESCRIPTION

ISSUED FOR CONSTRUCTION
 DRAWN: WRB 11-15-96
 CHECKED: MW 11-15-96
 ENGINEER: JB 11/15/96
 PROJ: 11/15/96



PARSONS
 100 WEST WALNUT STREET
 PASADENA, CALIFORNIA

LIGO
 CALIFORNIA INSTITUTE OF TECHNOLOGY
 MASSACHUSETTS INSTITUTE OF TECHNOLOGY

LASER INTERFEROMETER
 GRAVITATIONAL-WAVE OBSERVATORY
 SITE NO. 2 - LIVINGSTON, LOUISIANA

CIVIL CORNER STATION UTILITY PLAN

SCALE: 1" = 50'
 CONTRACT NUMBER: PPI50969
 PROJECT NUMBER: 8094

SHEET NUMBER: **LA-C-009**