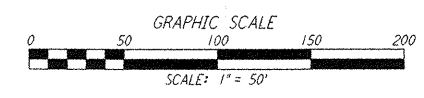
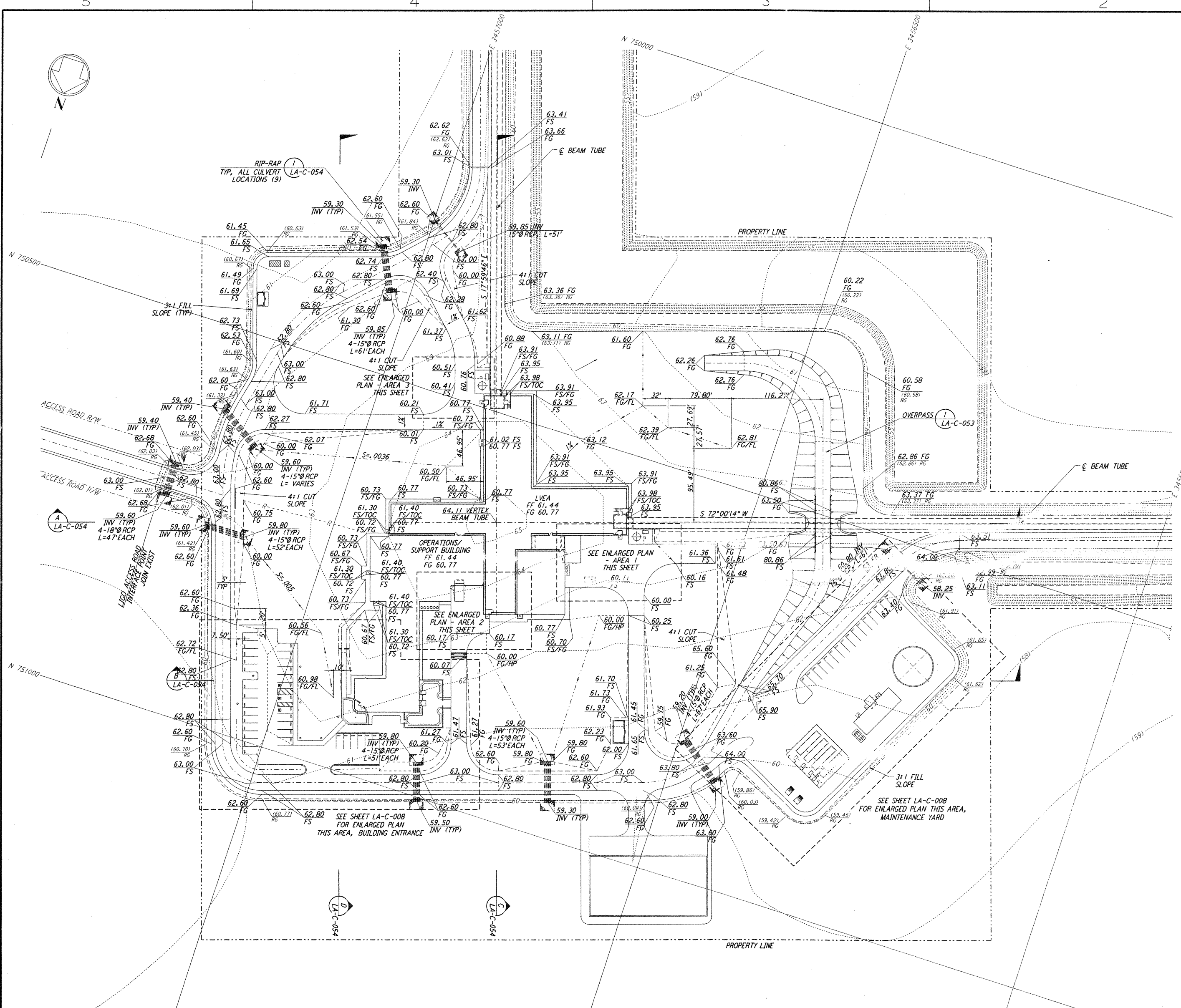
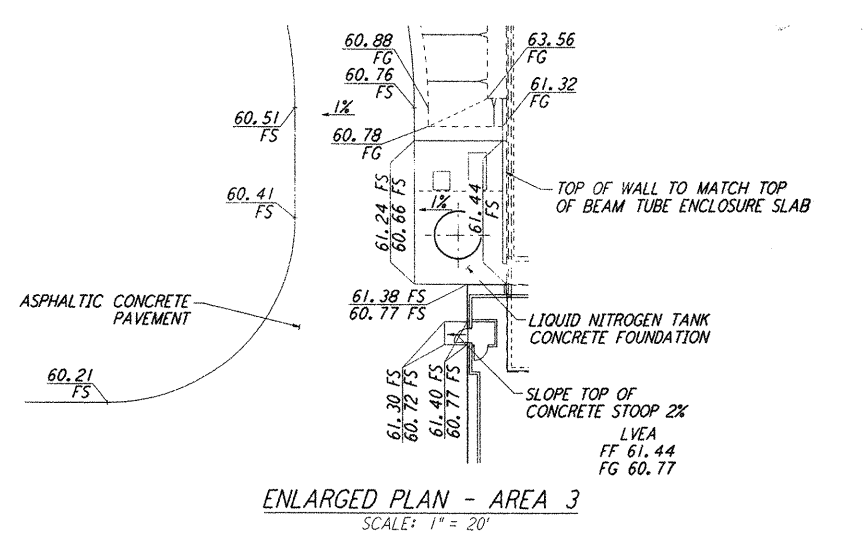
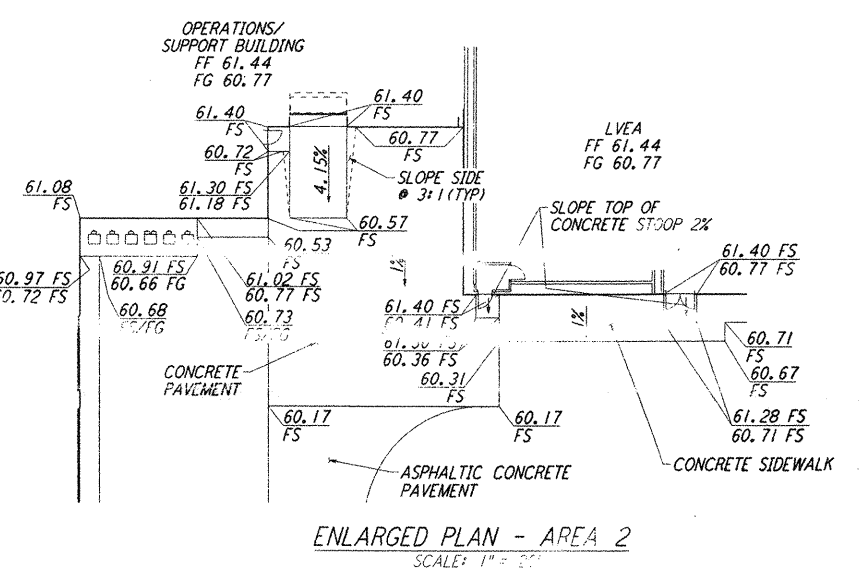
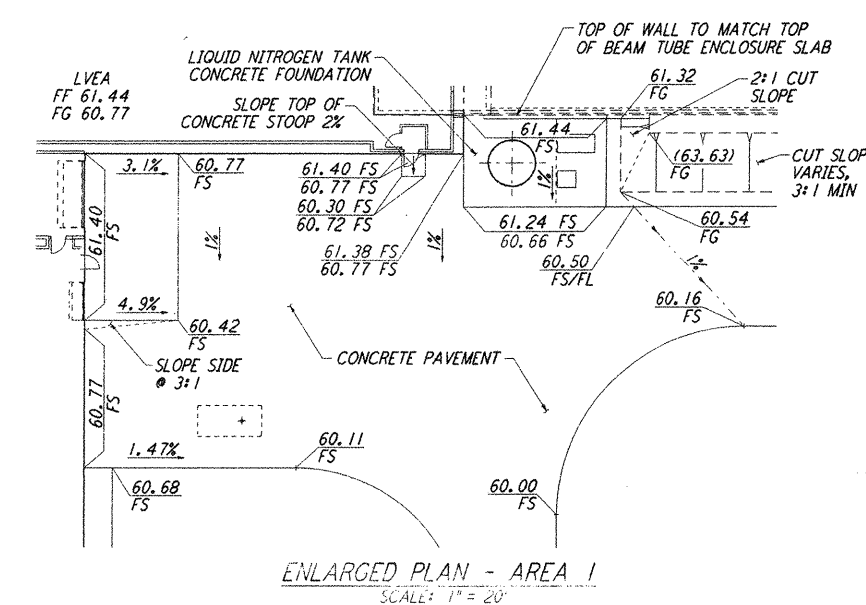


NOTES:  
 1. SEE SHEET LA-C-002 FOR GENERAL NOTES, LEGEND AND ABBREVIATIONS.



LIGO-D960825-02-O

NO.	DATE	BY	CHKD	ENGR	PROJ	DESCRIPTION
2	08-07-98	WRB	ML	JB	TDM	ISSUED FOR AS-BUILT
1	2-28-97	WRB	ML	JB	TDM	ADDED WALK/ENLARGED PAD, REVISED GRADING

ISSUED FOR CONSTRUCTION		
DRAWN	WRB	11-15-96
CHECKED	ML	11-15-96
ENGINEER	JB	11-15-96
PROJ	TDM	11-15-96

**AS-BUILT DRAWINGS**

**PARSONS**  
 100 WEST WALNUT STREET  
 PASADENA, CALIFORNIA

**LIGO**  
 CALIFORNIA INSTITUTE OF TECHNOLOGY  
 MASSACHUSETTS INSTITUTE OF TECHNOLOGY

LASER INTERFEROMETER  
 GRAVITATIONAL-WAVE OBSERVATORY  
 SITE NO. 2 - LIVINGSTON, LOUISIANA

CIVIL CORNER STATION  
 GRADING PLAN

SCALE: 1" = 50'  
 CONTRACT NUMBER: PPI50969  
 PROJECT NUMBER: 8094

**LA-C-007**

This document and the design it covers are the property of PARSONS. They are loaned only with the borrower's expressed written agreement that they will not be reproduced, copied, loaned, exhibited, or used in any other way, except by written consent from PARSONS to the borrower.