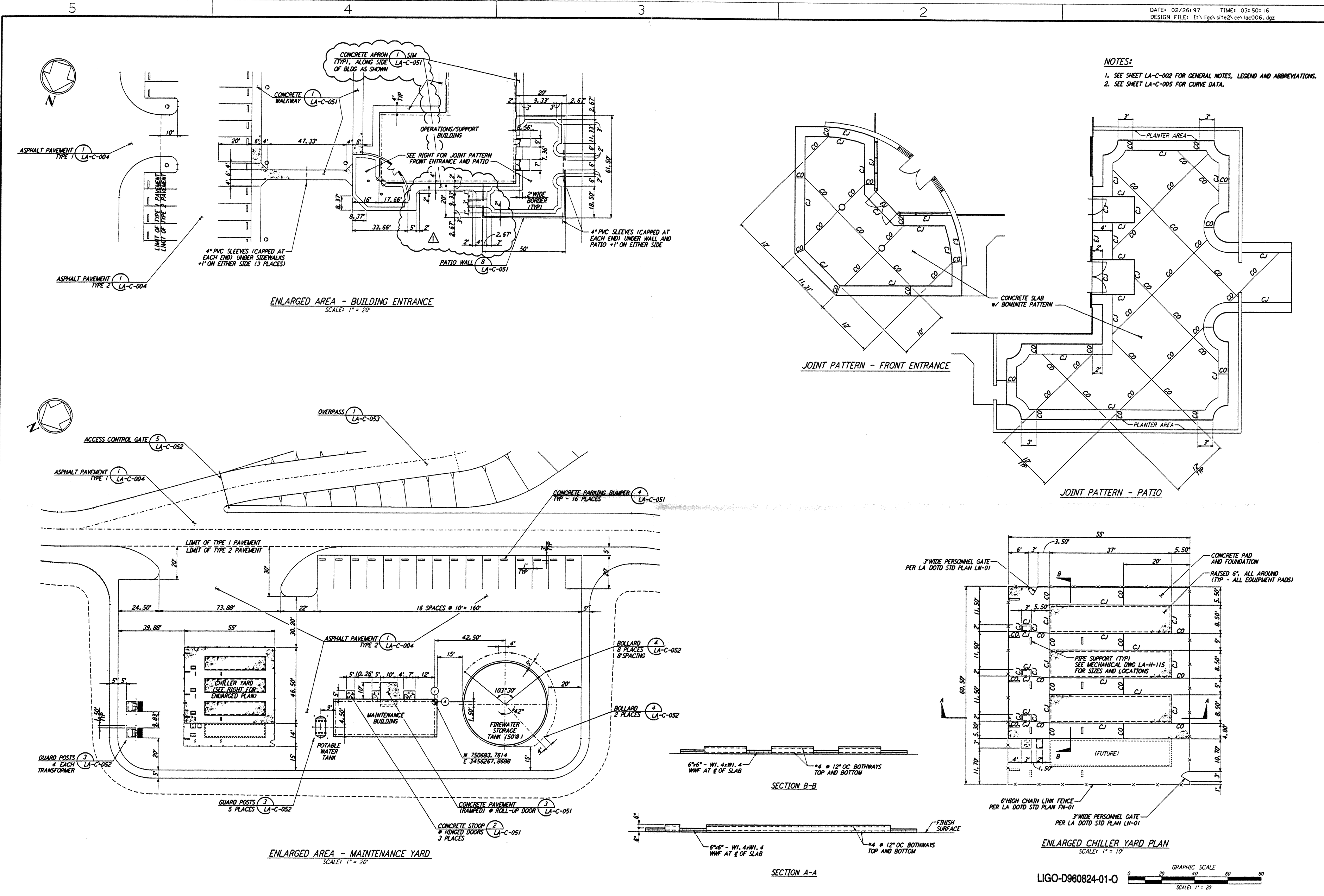
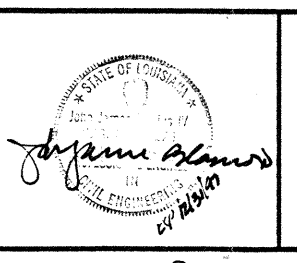


This document and the design it covers are the property of PARSONS. They are loaned only with the borrower's expressed written agreement that they will not be reproduced, copied, loaned, exhibited, or used in any other way, except by written consent from PARSONS to the borrower.



| NO. | DATE    | BY  | CHKD | ENGR | PROJ | DESCRIPTION             |
|-----|---------|-----|------|------|------|-------------------------|
| 1   | 2-28-97 | WRB | CL   |      |      | ADDED WALK/WALL OPENING |

|                         |     |          |
|-------------------------|-----|----------|
| ISSUED FOR CONSTRUCTION | WRB | 11-15-96 |
| DRAWN                   | WRB | 11-15-96 |
| CHECKED                 | MC  | 11-15-96 |
| ENGINEER                | JB  | 11-15-96 |
| PROJ                    | TDM | 11-15-96 |



**PARSONS**  
 100 WEST WALNUT STREET  
 PASADENA, CALIFORNIA

**LIGO**  
 CALIFORNIA INSTITUTE OF TECHNOLOGY  
 MASSACHUSETTS INSTITUTE OF TECHNOLOGY

**LASER INTERFEROMETER  
 GRAVITATIONAL-WAVE OBSERVATORY  
 SITE NO. 2 - LIVINGSTON, LOUISIANA**

**CIVIL  
 CORNER STATION  
 PLOT PLAN  
 ENLARGED PLAN**

SCALE: AS NOTED  
 CONTRACT NUMBER: PP150969  
 PROJECT NUMBER: 8094  
 SHEET NUMBER: **LA-C-006**

6801 FEB 26 08:47:27 1997 5:17:36Z J:\PLANS\006\006.DWG

6801 FEB 26 08:47:27 1997 5:17:36Z J:\PLANS\006\006.DWG