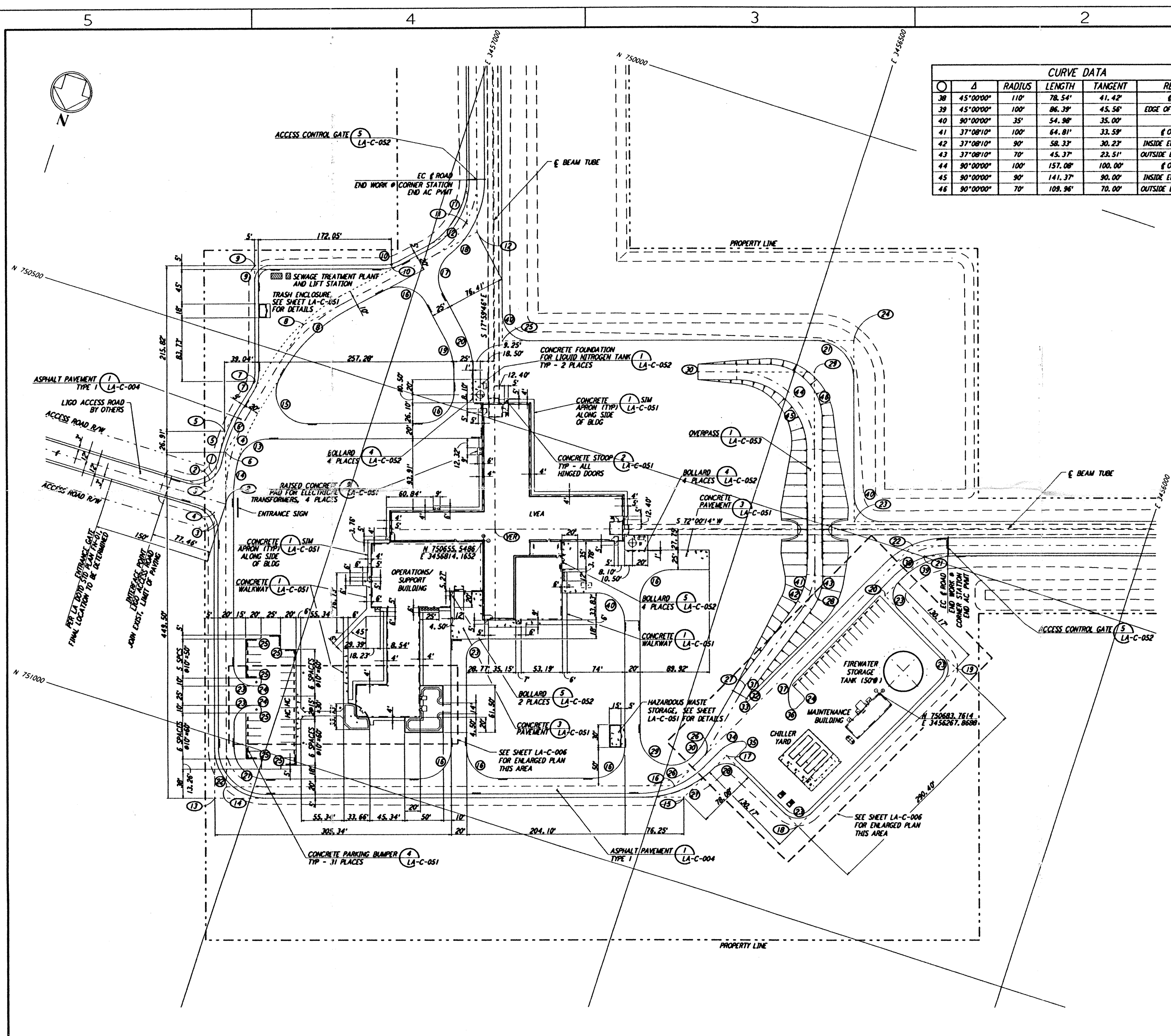
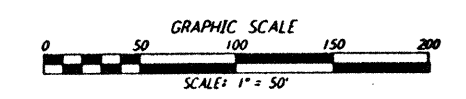


CURVE DATA					
Δ	RADIUS	LENGTH	TANGENT	REMARK	
38	45°00'00"	110'	78.54'	41.42'	Ø ROAD
39	45°00'00"	100'	86.39'	45.56'	EDGE OF PAD (EXIST)
40	90°00'00"	35'	54.98'	35.00'	
41	37°08'10"	100'	64.81'	33.59'	Ø OVERPASS
42	37°08'10"	90'	58.33'	30.23'	INSIDE EDGE OVERPASS
43	37°08'10"	70'	45.37'	23.51'	OUTSIDE EDGE OVERPASS
44	90°00'00"	100'	157.08'	100.00'	Ø OVERPASS
45	90°00'00"	90'	141.37'	90.00'	INSIDE EDGE OVERPASS
46	90°00'00"	70'	109.96'	70.00'	OUTSIDE EDGE OVERPASS

NOTES:
 1. SEE SHEET LA-C-002 FOR GENERAL NOTES, LEGEND AND ABBREVIATIONS.
 2. FOR PROPERTY CORNER LOCATIONS, SEE SHEET LA-C-001.

CURVE DATA					
Δ	RADIUS	LENGTH	TANGENT	REMARK	
1	84°57'55"	35'	58.47'	38.69'	EDGE OF PAD (EXIST)
2	95°43'30"	35'	58.01'	38.17'	EDGE OF ROAD
3	72°25'44"	35'	44.24'	25.63'	
4	31°12'13"	215'	117.09'	60.04'	Ø ROAD
5	18°35'50"	230'	74.65'	37.66'	EDGE OF PAD (EXIST)
6	19°21'26"	225'	76.02'	38.37'	EDGE OF ROAD
7	31°12'53"	45'	24.51'	12.57'	EDGE OF PAD (EXIST)
8	31°01'25"	215'	116.42'	59.67'	Ø ROAD
9	90°00'00"	20'	31.42'	20.00'	EDGE OF PAD (EXIST)
10	27°45'35"	45'	21.80'	11.12'	EDGE OF PAD (EXIST)
11	62°14'25"	100'	108.63'	60.37'	EDGE OF PAD (EXIST)
12	62°14'25"	110'	119.49'	66.41'	Ø ROAD
13	77°07'37"	40'	53.84'	31.89'	
14	12°52'23"	205'	46.06'	23.13'	
15	121°12'59"	40'	84.62'	71.01'	
16	90°00'00"	40'	62.83'	40.00'	
17	79°11'35"	40'	55.29'	33.09'	
18	51°26'00"	120'	107.72'	57.79'	
19	27°45'38"	100'	48.45'	24.71'	
20	27°45'38"	125'	60.56'	30.89'	
21	90°00'00"	50'	78.54'	50.00'	
22	90°00'00"	65'	102.10'	65.00'	EDGE OF PAD (EXIST)
23	90°00'00"	25'	39.27'	25.00'	
24	90°00'00"	5'	7.85'	5.00'	
25	90°00'00"	2'	3.14'	2.00'	
26	45°00'00"	110'	86.39'	45.56'	
27	44°16'19"	130'	100.45'	52.88'	EDGE OF PAD (EXIST)
28	89°16'18"	25'	38.95'	24.68'	
29	133°55'22"	40'	93.50'	94.06'	
30	15°01'02"	75'	15.56'	9.89'	
31	7°20'56"	210'	26.93'	13.49'	Ø OVERPASS
32	7°19'26"	200'	25.56'	12.80'	INSIDE EDGE OVERPASS
33	164°48'43"	2'	5.75'	15.00'	
34	44°24'55"	40'	31.01'	16.33'	
35	135°35'05"	5'	11.83'	12.25'	
36	115°22'40"	5'	10.07'	7.91'	
37	64°37'22"	40'	45.12'	25.30'	

COORDINATES			
VER	NORTH	EAST	
1	750636.6558	3456804.5473	VERTEX (INTERSECTION BEAM TUBE & S)
2	750710.5437	3457146.2703	Ø ROAD INTERSECTION
3	750695.7176	3457169.7878	PI EDGE OF PAD
4	750725.6246	3457157.1428	PI EDGE OF PAD
5	750620.2218	3457176.9108	PI EDGE OF PAD (EXIST)
6	750645.4351	3457167.4204	PI Ø ROAD
7	750546.8700	3457159.6963	PI EDGE OF PAD (EXIST)
8	750457.1195	3457123.2258	PI Ø ROAD
9	750402.8965	3457206.4653	PI EDGE OF PAD (EXIST)
10	750348.1971	3457038.0789	PI EDGE OF PAD (EXIST)
11	750268.8723	3456960.8201	PI EDGE OF PAD (EXIST)
12	750274.4698	3456845.3330	PI Ø ROAD
13	751077.5788	3457042.8125	PI EDGE OF PAD (EXIST)
14	751058.6784	3457033.1807	PI Ø ROAD
15	750890.4506	3456466.7509	PI EDGE OF PAD (EXIST)
16	750879.9903	3456483.1014	PI Ø ROAD
17	750821.7936	3456430.6560	PI EDGE OF PAD (EXIST)
18	750880.7593	3456314.9485	PI EDGE OF PAD (EXIST)
19	750622.0215	3456183.0949	PI EDGE OF PAD (EXIST)
20	750562.9185	3456299.0712	PI EDGE OF PAD (EXIST)
21	750496.6088	3456266.2979	PI EDGE OF PAD (EXIST)
22	750490.9667	3456284.8505	PI Ø ROAD
23	750483.8725	3456366.5871	PI EDGE OF PAD (EXIST)
24	750258.6572	3456439.7641	PI EDGE OF PAD (EXIST)
25	750398.8611	3456871.2792	PI EDGE OF PAD (EXIST)
26	750829.2052	3456457.2207	Ø ROAD INTERSECTION
27	750727.4705	3456435.9835	PI Ø ROAD
28	750586.2240	3456386.9620	PI Ø ROAD
29	750313.6560	3456475.5049	PI Ø ROAD
30	750360.0050	3456618.1724	PI Ø ROAD



This document and the design it covers are the property of PARSONS. They are loaned only with the borrower's expressed written agreement that they will not be reproduced, copied, loaned, exhibited, or used in any other way, except by written consent from PARSONS to the borrower.

NO.	DATE	BY	CHKD	ENGR	PROJ	DESCRIPTION
B	7/24/96	WRB	ML	UB	TDM	ISSUED FOR BID
A	6/14/96	WRB	ML	UB	TDM	FINAL DESIGN REVIEW

DRAWN	WRB
CHECKED	
ENGINEER	
PROJ	

PARSONS
 100 WEST WALNUT STREET
 PASADENA, CALIFORNIA

LIGO
 CALIFORNIA INSTITUTE OF TECHNOLOGY
 MASSACHUSETTS INSTITUTE OF TECHNOLOGY

LASER INTERFEROMETER
 GRAVITATIONAL-WAVE OBSERVATORY
 SITE NO. 2 - LIVINGSTON, LOUISIANA

CIVIL
 CORNER STATION
 PLOT PLAN

SCALE: 1" = 50'
 CONTRACT NUMBER: PPI50969
 SHEET NUMBER: 8094

LA-C-005

Mon Jul 22 06:19:21 1996 s3-v18b2 J:\PLOTS\QUEUES\18B2\CE005A.PRF