

EDWARDS

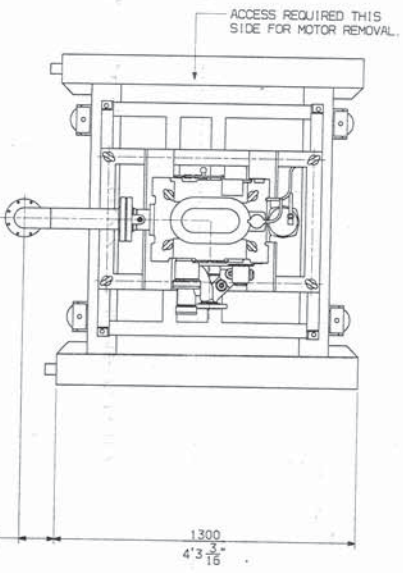
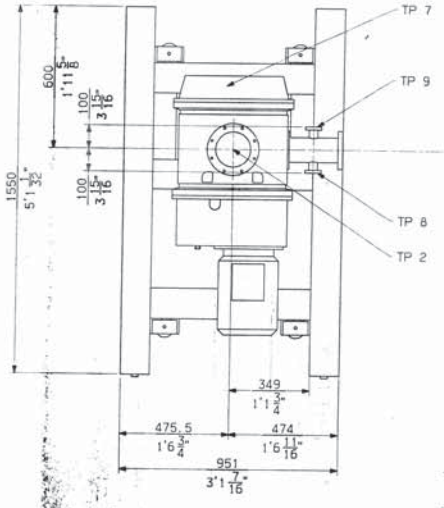
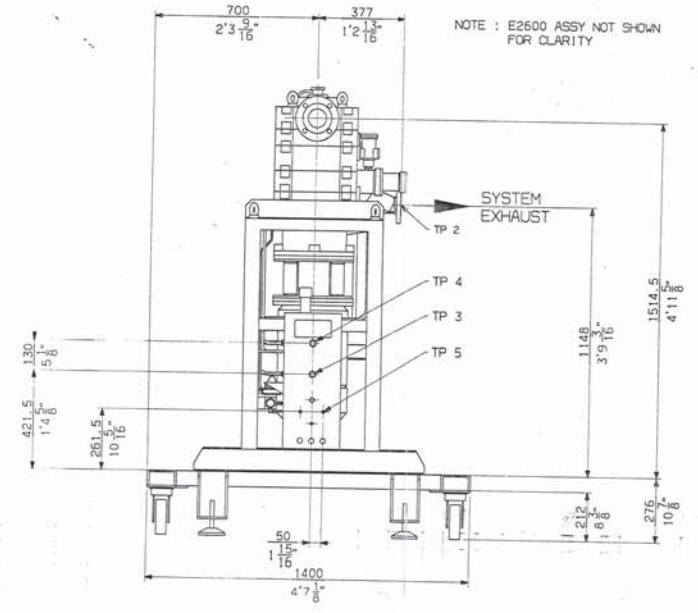
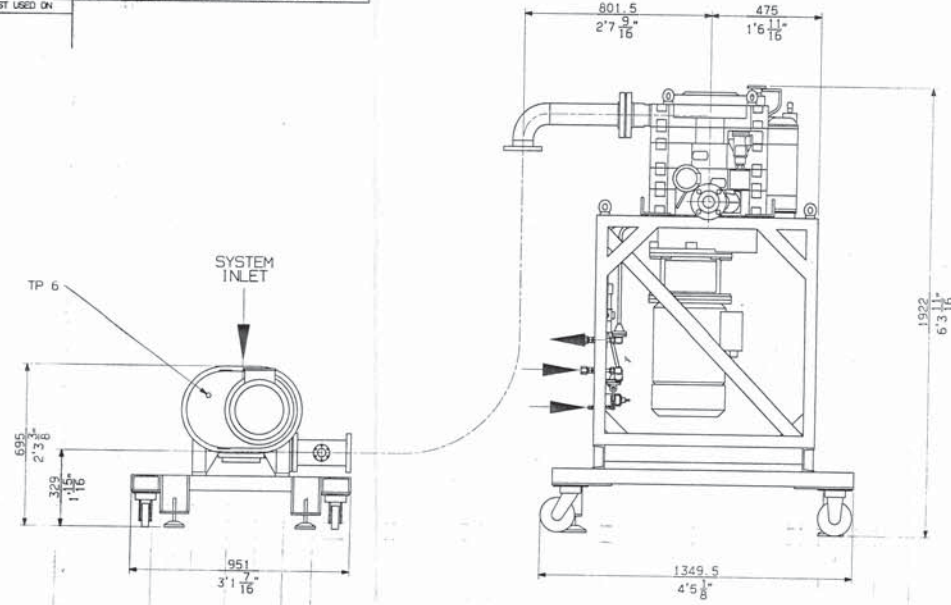
THIS DRAWING IS COPYRIGHT. IT MUST NOT BE COPIED, REPRODUCED OR OTHERWISE MADE USE OF WITHOUT THE COMPANY'S WRITTEN PERMISSION.

DO NOT SCALE

IMPORTANT: REMOVE ALL BURRS AND SHARP EDGES UNLESS OTHERWISE STATED.

FIRST USED ON

NOTE: E2600 ASSY NOT SHOWN FOR CLARITY



EDWARDS Pumping System			
MODEL No	EDP200	WEIGHT	217 lbs
ITEM No	NCB301090	WATER INLET	1 1/2" NPTF
SERIAL NO.		PNEUMATIC AIR	1/2" NPTF
VOLTAGE	460	GAS BALLAST	
AMPS	23.1	INLET PURGE	
Ph / Hz	3 / 60	SEAL PURGE	4.5" x 7.0" x 2.0"
MADE IN ENGLAND BY EDWARDS HIGH VACUUM INT (PART OF B. O. C. LTD) CRAWLEY SUSSEX ENGLAND			

TERMINATION POINT	DESCRIPTION	SIZE / RATING
TP 1	SYSTEM INLET	ISO160 TO PNEUROP 6605 1981
TP 2	SYSTEM OUTLET	2" 150lb RF ANSI B16.5 FLANGE
TP 3	COOLING WATER INLET	1/2" NPTF INT' TO ANSI B.1.20.1
TP 4	COOLING WATER OUTLET	1/2" NPTF INT' TO ANSI B.1.20.1
TP 5	SEAL PURGE INLET	FOR 1/4" O/D TUBE (COMPRESSION)
TP 6	E2600 COOLING INLET	Rd 3/8 (3/8" BSP F) TO B.S.21
TP 7	E2600 COOLING OUTLET	Rd 3/8 (3/8" BSP F) TO B.S.21
TP 8	GAUGE PORT	70 FC CONFLAT FLANGE
TP 9	GAUGE PORT	70 FC CONFLAT FLANGE

- NOTE :-
- ESTIMATED SYSTEM MASS = 3079 lbs.
 - WHERE DUAL DIMENSIONS ARE GIVEN IMPERIAL DIMENSIONS ARE FOR REFERENCE PURPOSES ONLY.

ORIGINAL 1:5	ALL DIMENSIONS IN INCHES UNLESS OTHERWISE STATED	COMPONENT	INSTALLATION DRAWING - EDP200
DATE 01/05/96	BY M. J. H.	MATERIAL	N/A
REVISION	DATE	FINISH	N/A
SIZE	DRAWING NUMBER	SHEET NO	ISSUE
A1	NCB301090	1 OF 1	1

TITLE: EDP200 - E12600 CHEMICAL DRY VACUUM PUMPING SYSTEM
 DRAWING NUMBER: NCB301090
 DATE: 01/05/96
 SHEET NO: 1 OF 1
 ISSUE: 1

PRELIMINARY
 SUBJECT TO CHANGE