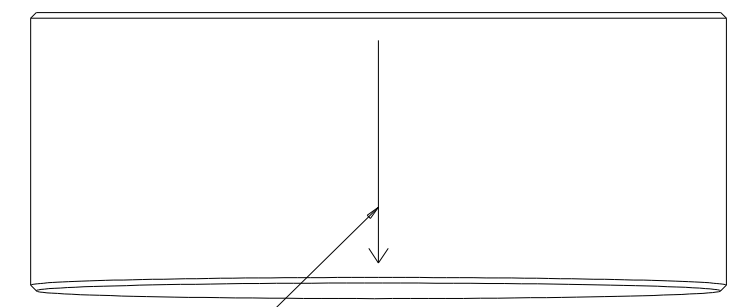
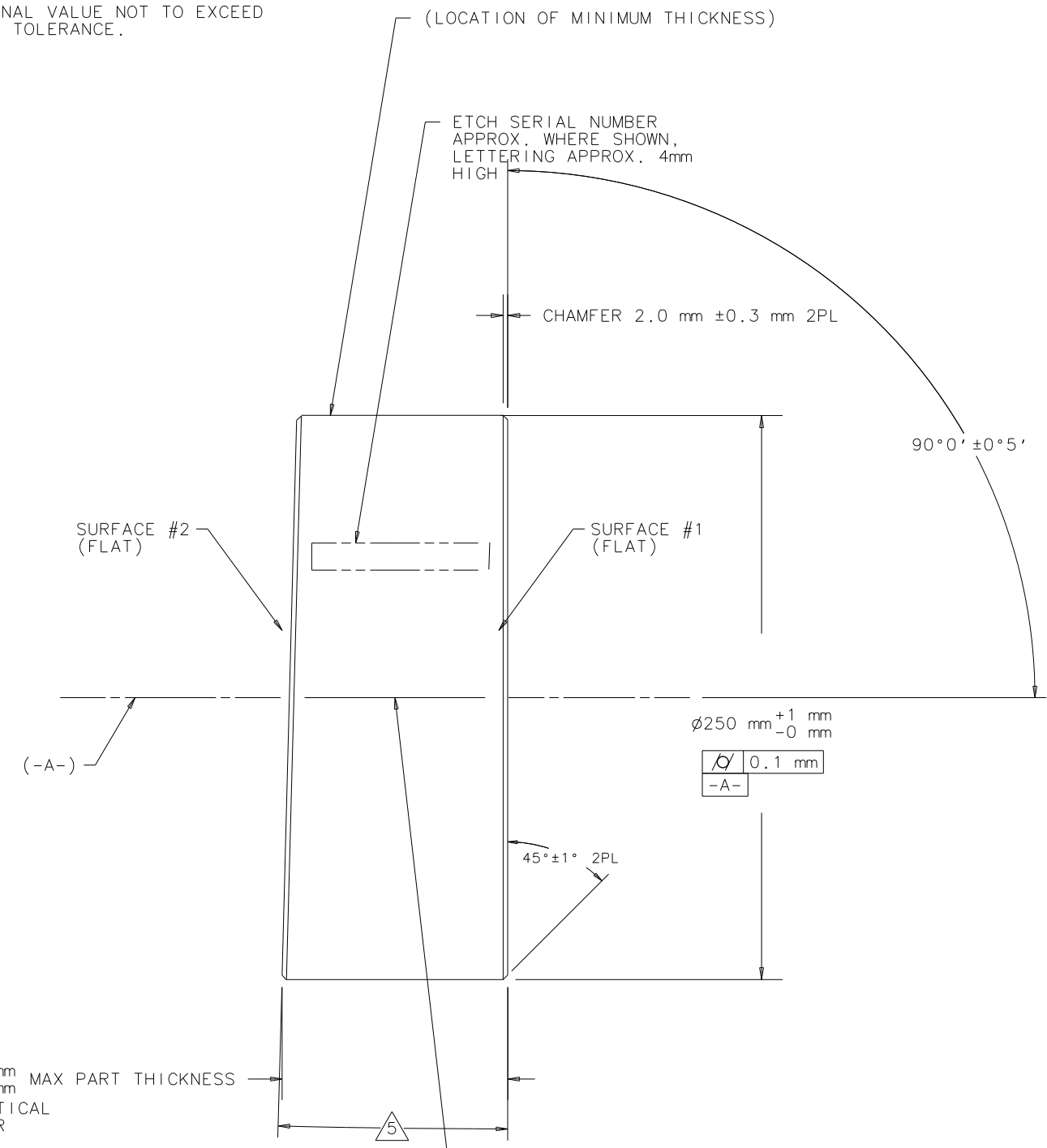
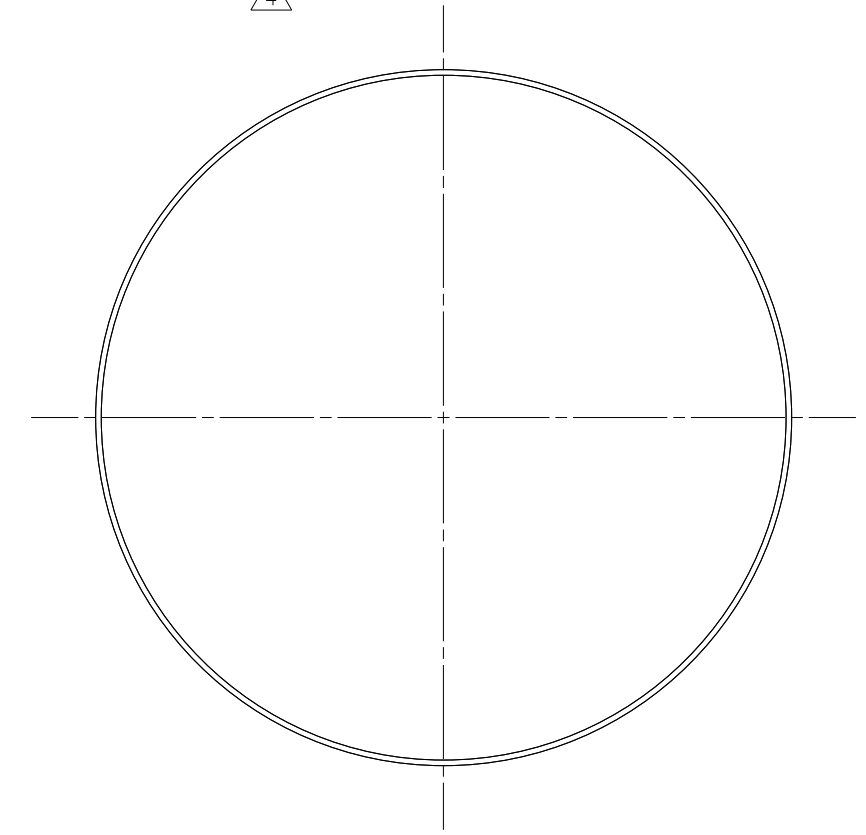


REV	DATE	DRAWN BY	CHECKED	DCC	DCN/DESCRIPTION
A	9-8-96	C CONLEY			E960113/INITIAL RELEASE

- NOTES: (UNLESS OTHERWISE SPECIFIED)
- ALL DIMENSIONS ARE IN MILLIMETERS AND DEGREE-MINUTES.
 - DRAWING TO BE INTERPRETED PER ANSI Y14.5M-1982.
 - POLISH ALL FACES, EDGES AND CHAMFERS PER SPECIFICATION LIGO-E960101-D.
 - REGISTRATION MARK IS LOCATED COINCIDENT WITH THE REGISTRATION MARK DRAWN ON THE BLANK $\pm 1\text{mm}$.
 - TBD. NOMINAL VALUE NOT TO EXCEED $2^{\circ}0'$. $\pm 5'$ TOLERANCE.



ETCH 0.25mm ± 0.05 mm WIDE X 80mm ± 5 mm LONG LINE WITH ARROW POINTING TOWARD SURFACE #1, PARALLEL TO -A- WITHIN ± 0.10 mm, CENTERED BETWEEN SURFACES #1 AND #2, AND AT LOCATION OF MINIMUM PART THICKNESS $\pm 0^{\circ}15'$.



ETCH 0.25mm ± 0.05 mm WIDE X 80mm ± 5 mm LONG 3X 90° $\pm 15'$ APART FROM LINE WITH ARROW (SEE TOP VIEW) PARALLEL TO -A- WITHIN ± 0.10 mm, CENTERED BETWEEN SURFACES #1 AND #2

DRWN	C CONLEY	DATE	9-8-96	CALIFORNIA INSTITUTE OF TECHNOLOGY MASSACHUSETTS INSTITUTE OF TECHNOLOGY		LIGO PROJECT	
CHKD				CAD FILE: D960790-A_substrate_FM.osc			
ENGR				FOLDING MIRROR SUBSTRATE			
APPD							
MATERIAL: FUSED SILICA PER LIGO-E960097-D				SCALE: NTS	SIZE	DRAWING NUMBER	SHEET
DO NOT SCALE DRAWING				B	D960790-A-D	1	OF 1