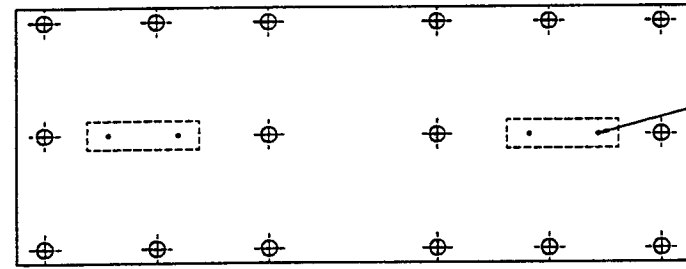
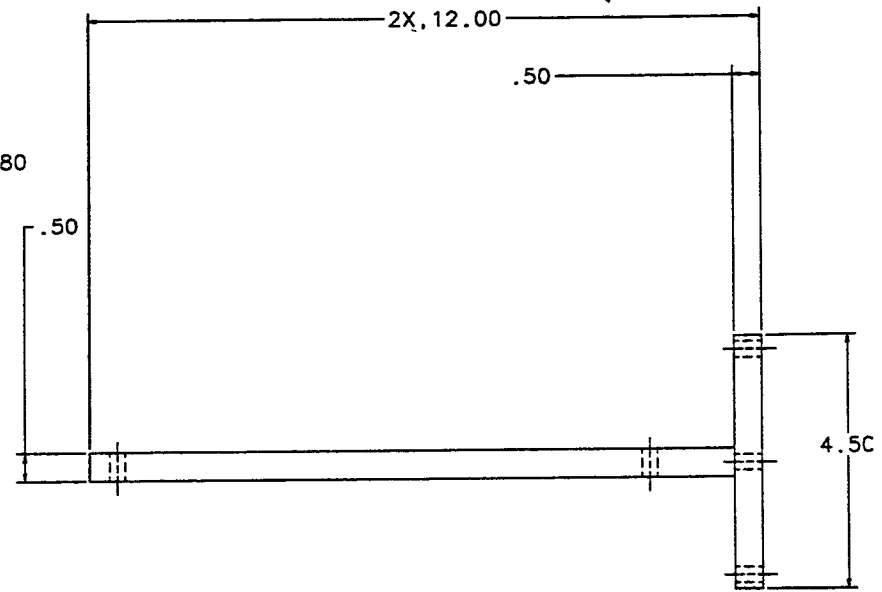
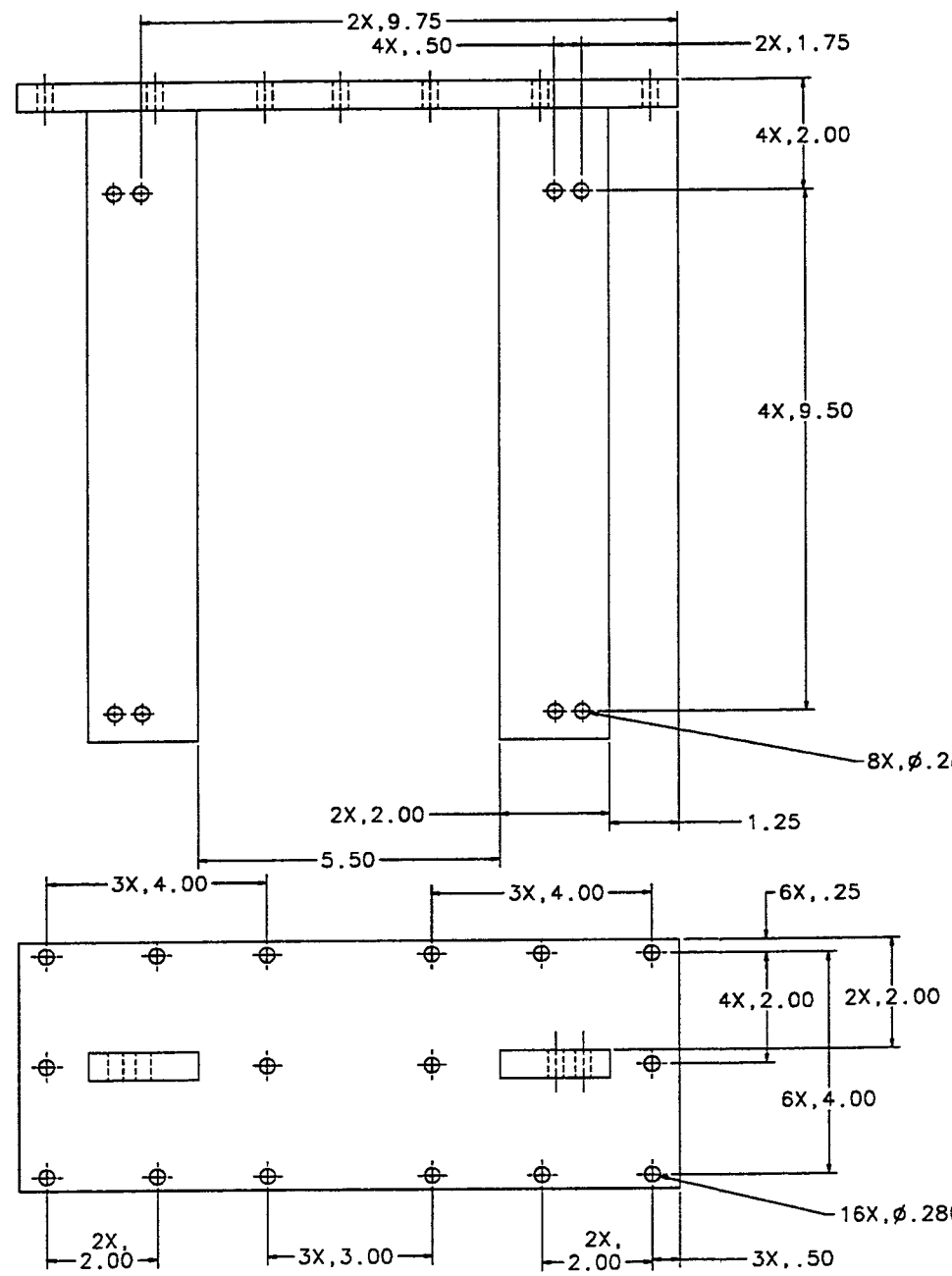


NOTES: (UNLESS OTHERWISE SPECIFIED)
 1. BREAK ALL SHARP EDGES AND CORNERS.
 2. PART MAY BE FILLET WELDED OR MACHINED. PART TO BE CLEANED WITH SOAP AND WATER BEFORE WELDING AND AFTER MACHINING. FILLET WELD CROSS SECTION SHALL HAVE A TYPICAL SIDE DIMENSION OF .13.



4X, ϕ .06/.03 VENT HOLES THROUGH BACK PLATE, FOR WELDED ASSEMBLY, APPROX WHERE SHOWN



REV		DATE		DESCRIPTION	

PARTS LIST		APPROVALS		DATE		LIGO	

LOS LIFTING FIXTURE
 D960761
 1 OF 1