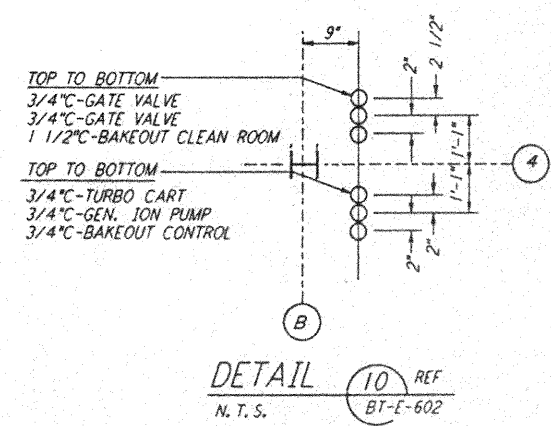
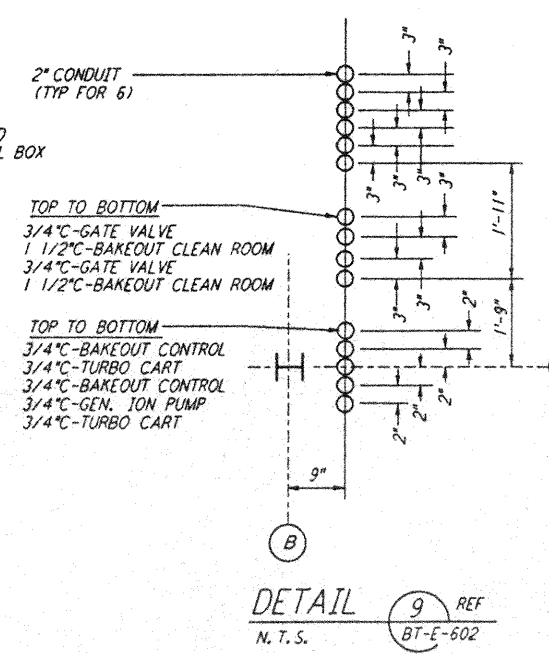
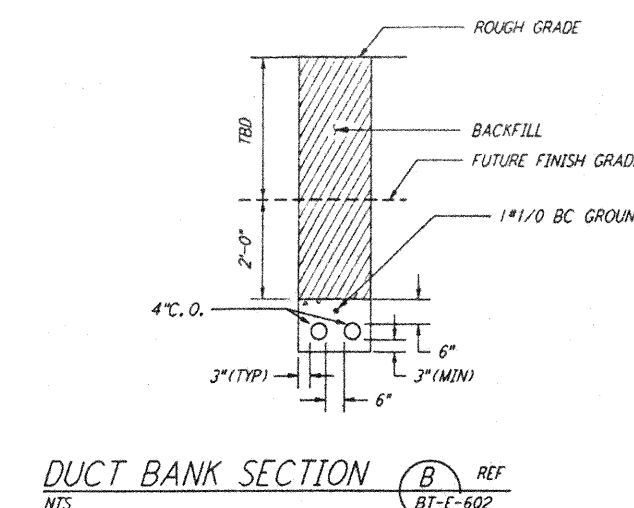
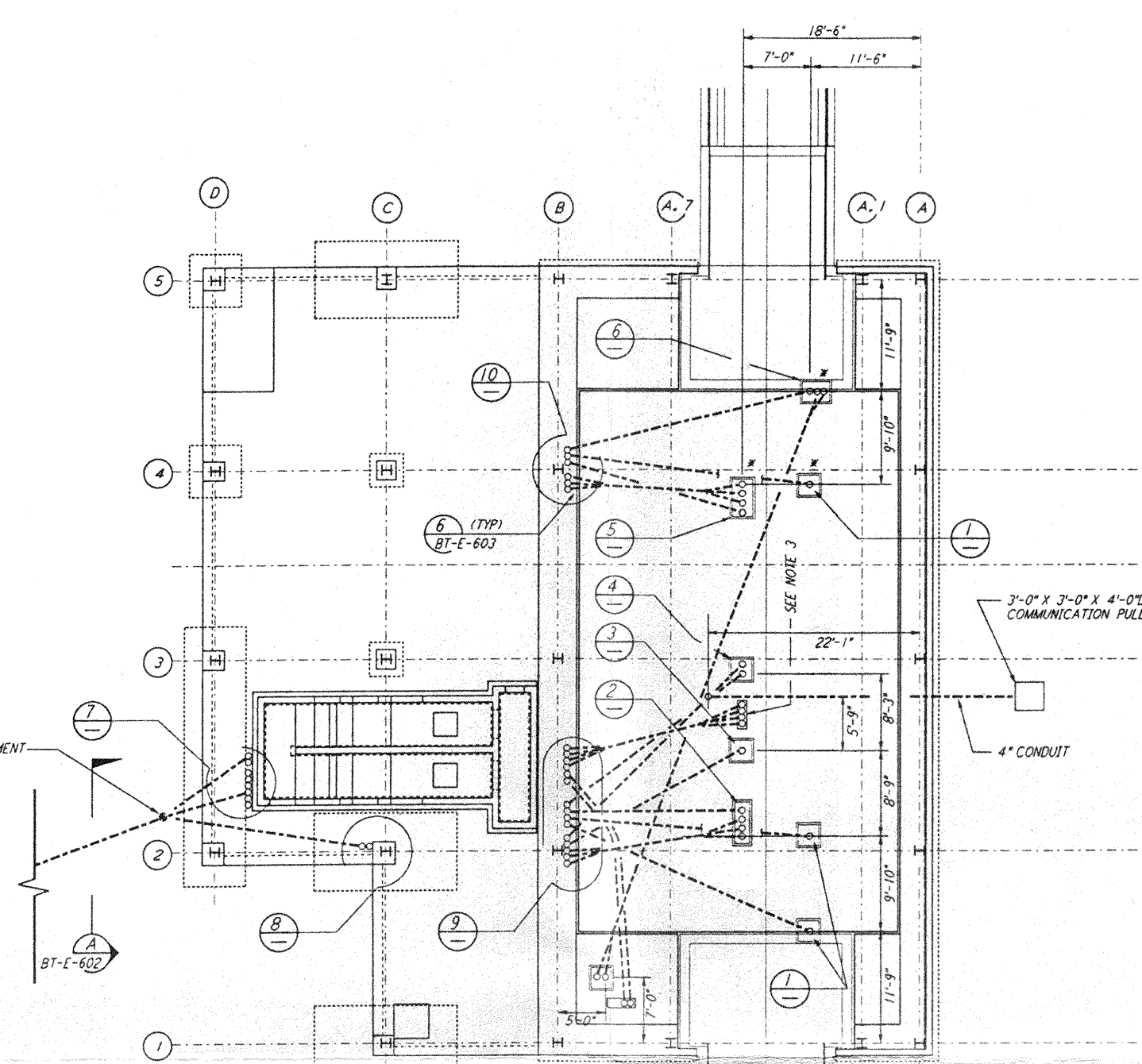
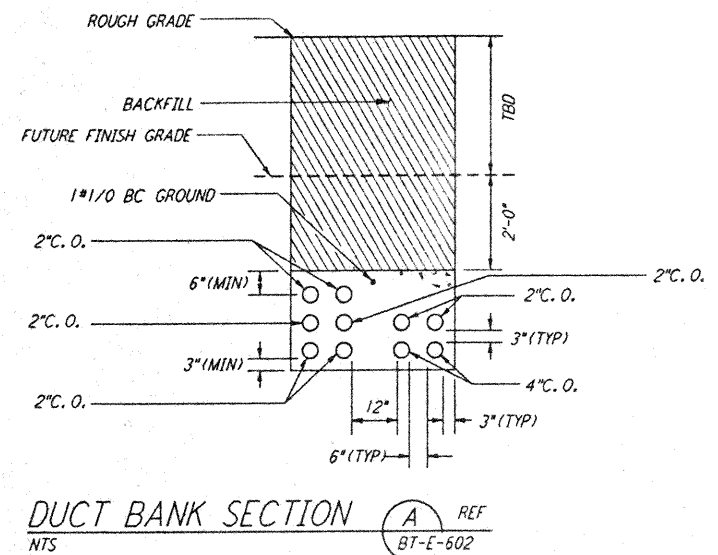
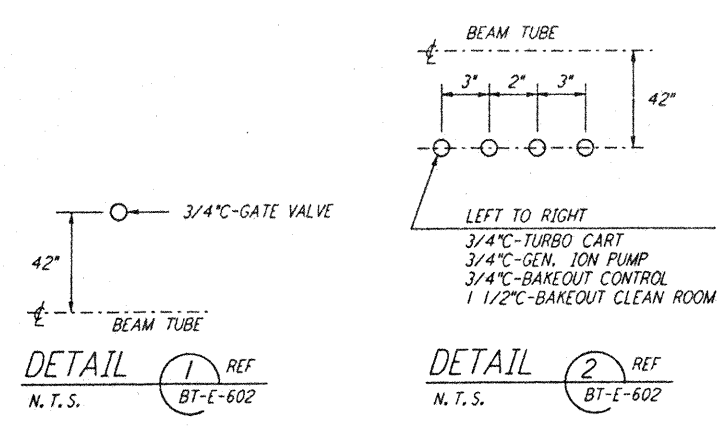
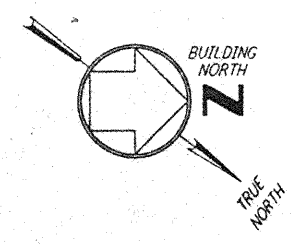
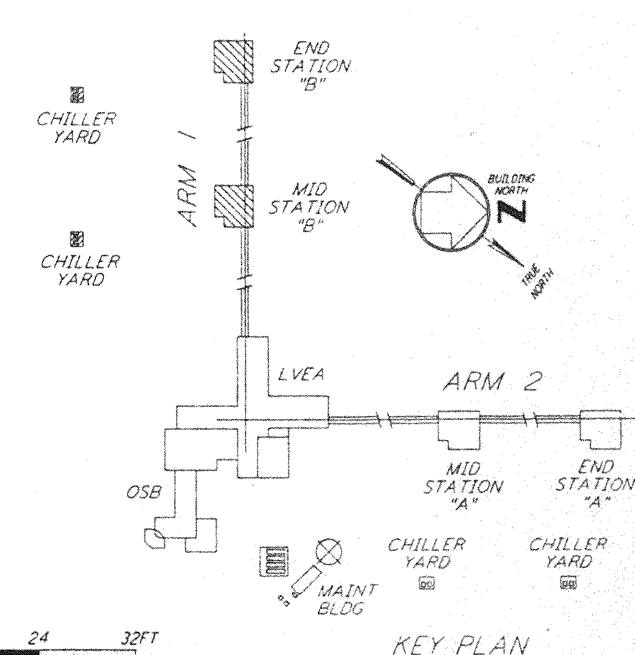
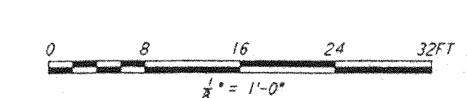
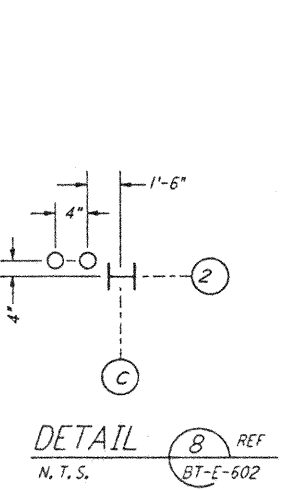
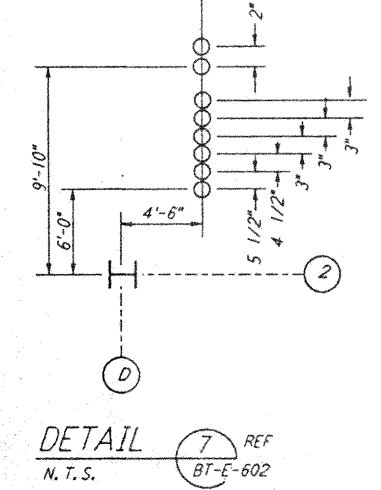
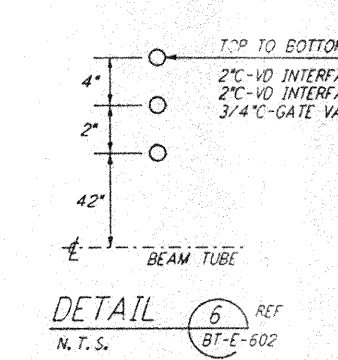
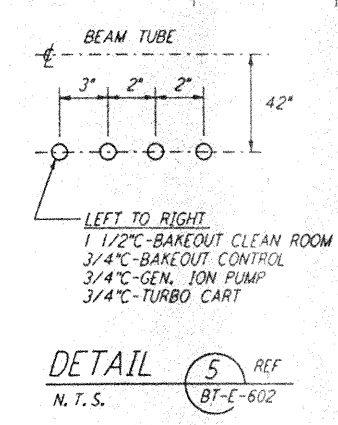
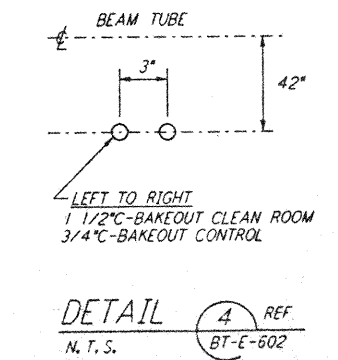
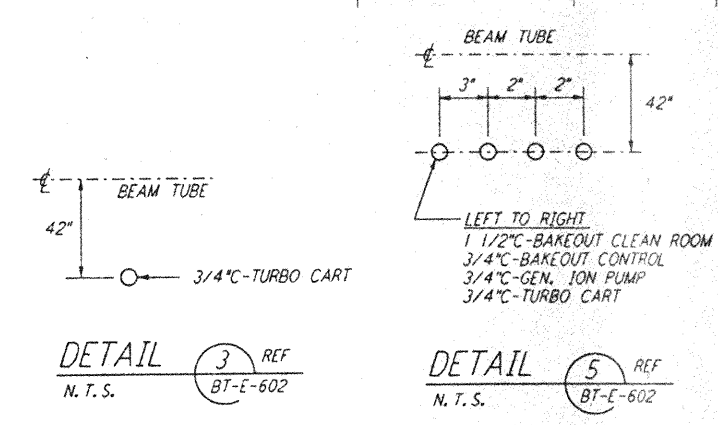
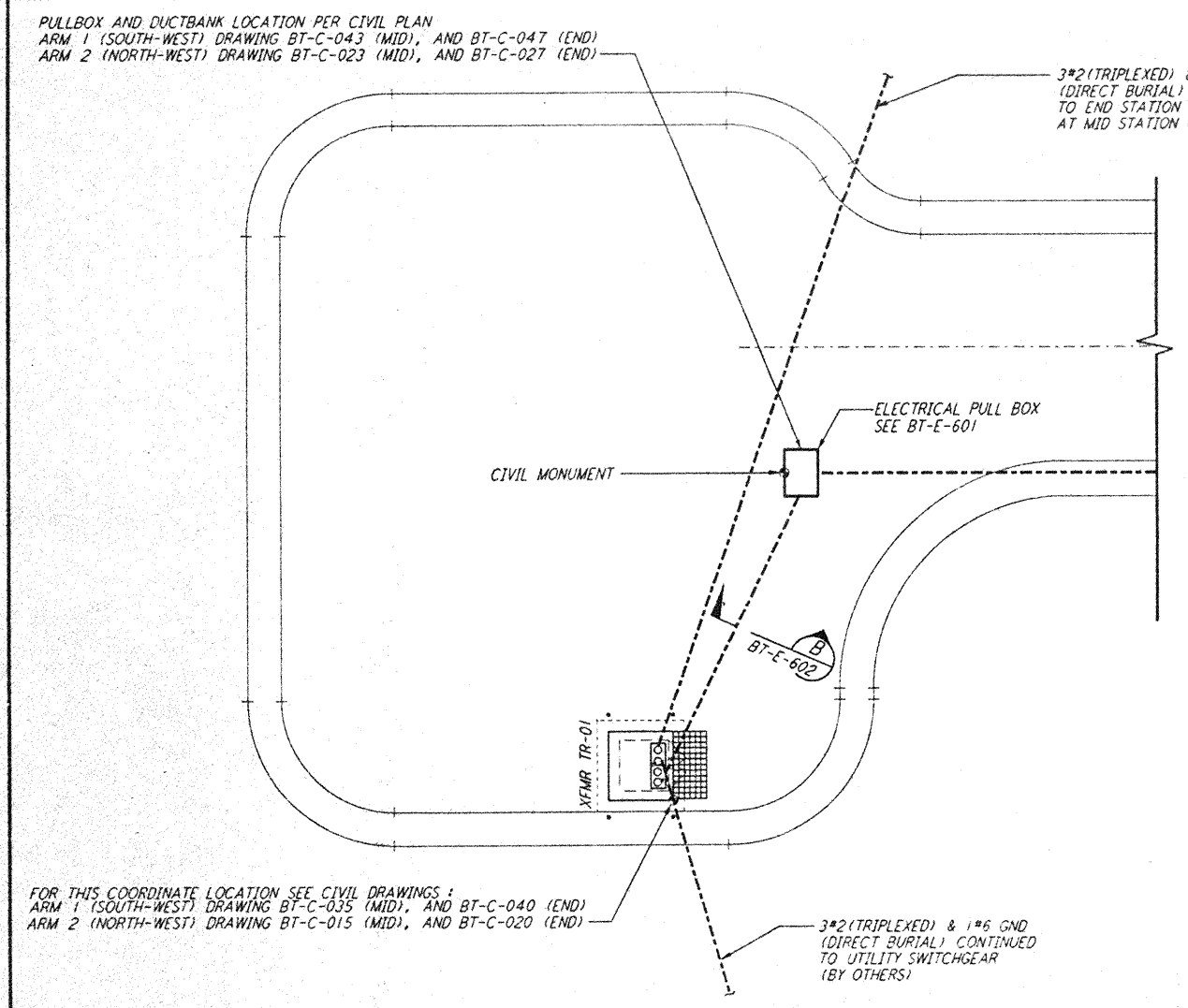


not be reproduced, copied, loaned, exhibited, or used in any other way, except by written consent from PARSONS to the borrower.

This document and the design it covers are the property of PARSONS. They are loaned only with the borrower's expressed written agreement that they will



- NOTES:**
- FOR STANDARD INSTALLATION DETAILS SEE DWG. BT-E-603 AND BT-E-604.
  - ALL RUNS ARE SHOWN DIAGRAMMATICALLY ONLY. CONTRACTOR SHALL COORDINATE INSTALLATION WITH OTHER DISCIPLINES.
  - COORDINATES OF CDS POWER CONDUIT SUB-UPS SHALL BE COORDINATED WITH THE CONSTRUCTION MANAGER.



NO.	DATE	BY	CHKD	ENGR	PROJ	CHANGE ORDER #	DESCRIPTION
A	4-15-96	LA	JL	WDM			

DRAWN	M. M.
CHECKED	
ENGINEER	
PROJ	

**PARSONS**  
100 WEST WALNUT STREET  
PASADENA, CALIFORNIA

**LIGO**  
CALIFORNIA INSTITUTE OF TECHNOLOGY  
MASSACHUSETTS INSTITUTE OF TECHNOLOGY

LASER INTERFEROMETER  
GRAVITATIONAL-WAVE OBSERVATORY  
BTE SITWORK & FABRICATION - HANFORD, WA

TITLE: ELECTRICAL  
MID & END STATIONS "B"  
UNDERGROUND  
PLAN

AS NOTED PPI50969 8094

SHEET NUMBER: **BT-E-602**  
L160-D960744-A-1