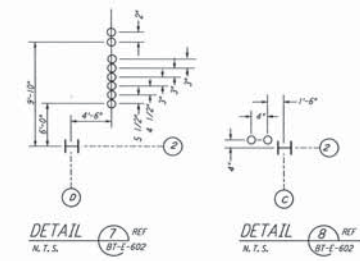
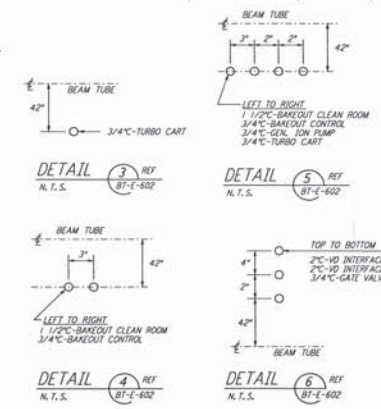
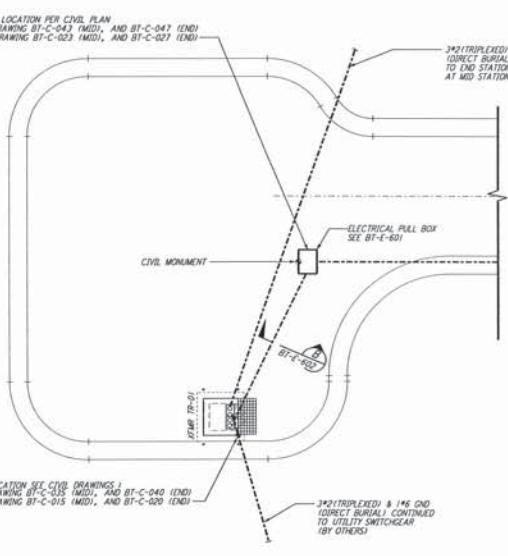
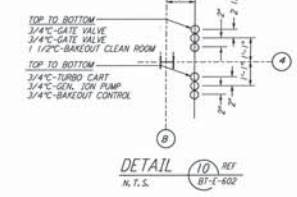
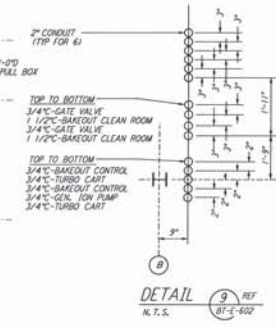
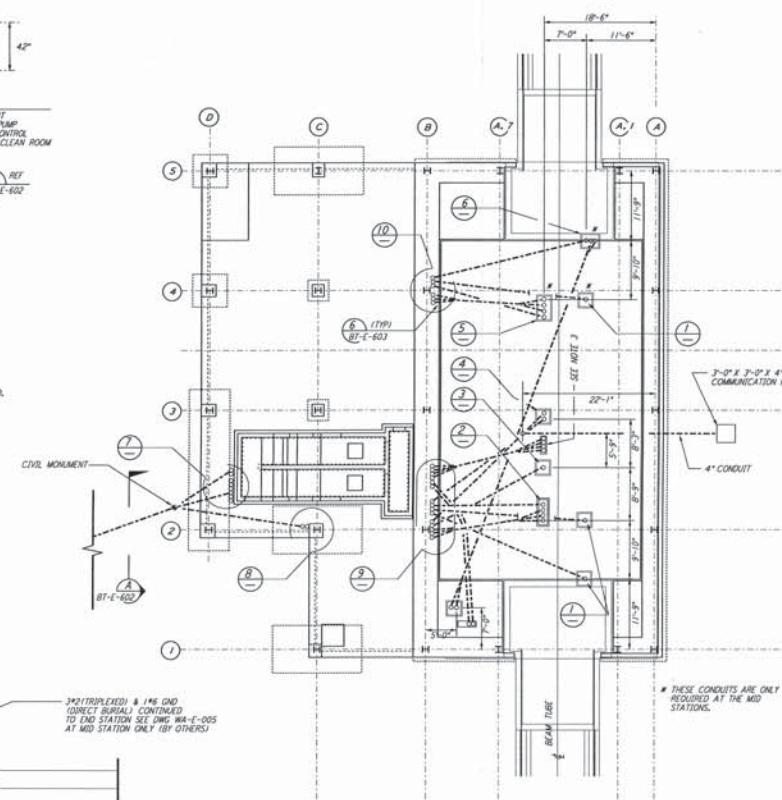
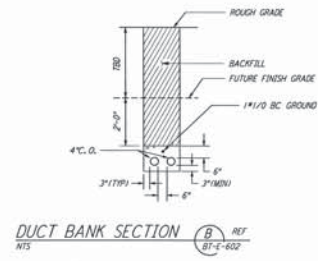
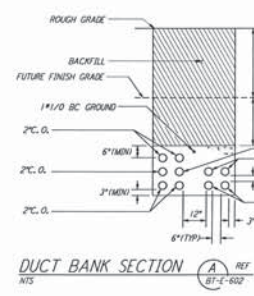
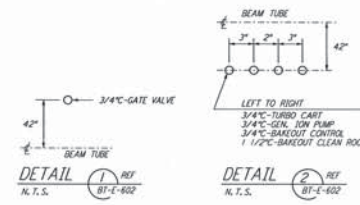
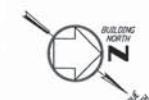


- NOTES:**
- FOR STANDARD INSTALLATION DETAILS SEE DWG. BT-E-603 AND BT-E-604.
 - ALL PLANS ARE SHOWN DIAGRAMMATICALLY ONLY. CONTRACTOR SHALL COORDINATE INSTALLATION WITH OTHER DISCIPLINES.
 - COORDINATES OF CDS POWER CONDUIT STUB-UPS SHALL BE COORDINATED WITH THE CONSTRUCTION MANAGER.



This document and the design it covers are the property of PARSONS. It is to be used only with the authority of PARSONS. No part of this document may be reproduced or transmitted in any form or by any means, except by written consent from PARSONS.

NO.	DATE	BY	CHKD	ENGR	PROJ	DESCRIPTION
Q	1-22-99	MEJ				ISSUED FOR AS BUILT
A	4-15-96	MEJ				CHANGE ORDER #4

AS-BUILT DRAWINGS

DRAWN: M. M.
 CHECKED: []
 ENGINEER: []
 PROJ: []

PARSONS
 100 WEST WALNUT STREET
 PASADENA, CALIFORNIA

LIGO
 CALIFORNIA INSTITUTE OF TECHNOLOGY
 MASSACHUSETTS INSTITUTE OF TECHNOLOGY

LASER INTERFEROMETER
 GRAVITATIONAL-WAVE OBSERVATORY
 BTE SITENWORK & FABRICATION - HANFORD, WA

ELECTRICAL
 MID & END STATIONS "B"
 UNDERGROUND
 PLAN

AS NOTED PP150969 8094
BT-E-602