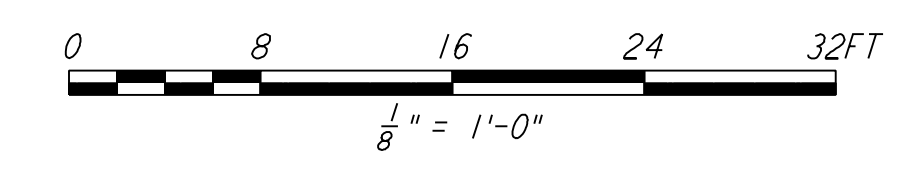
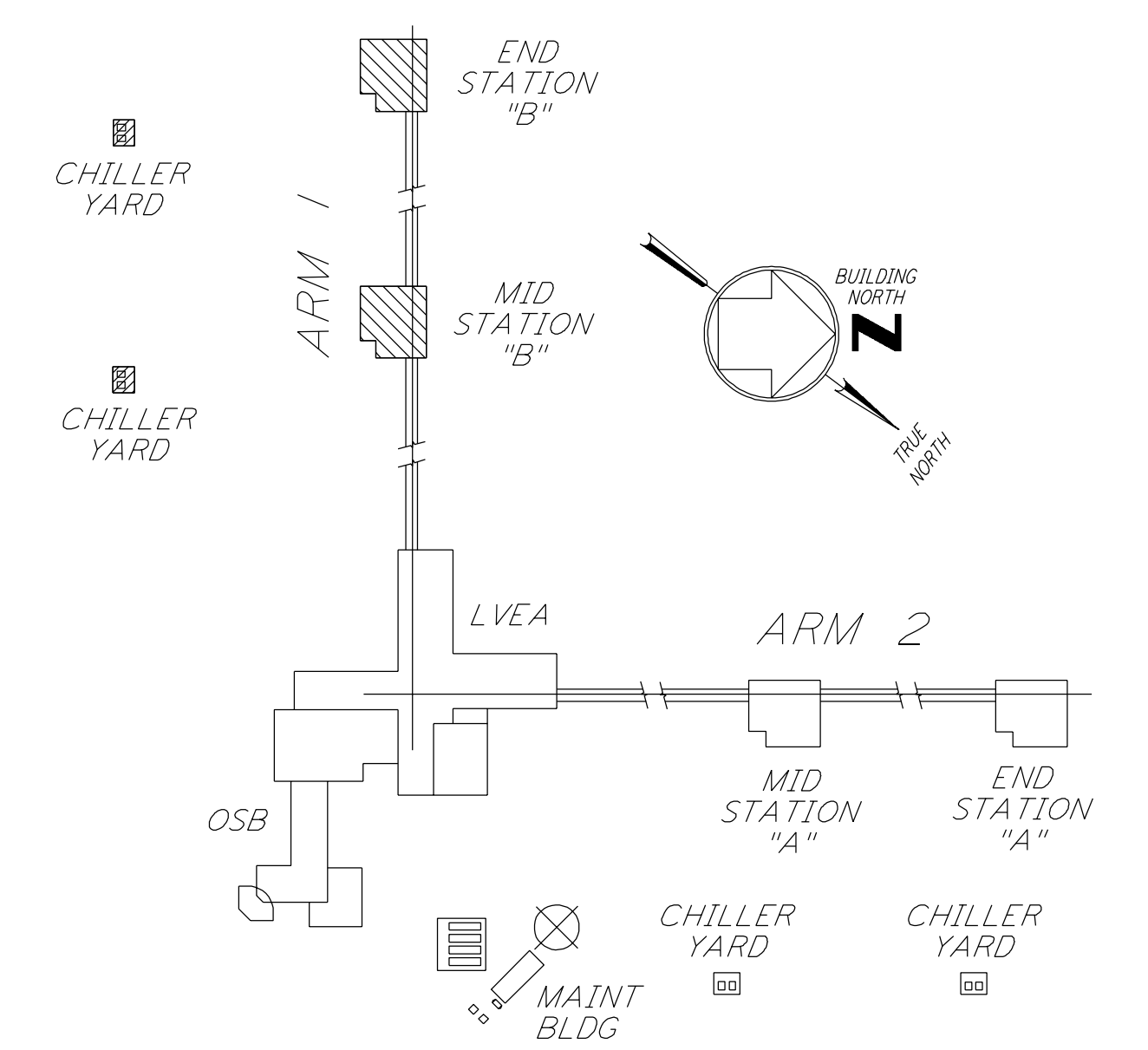
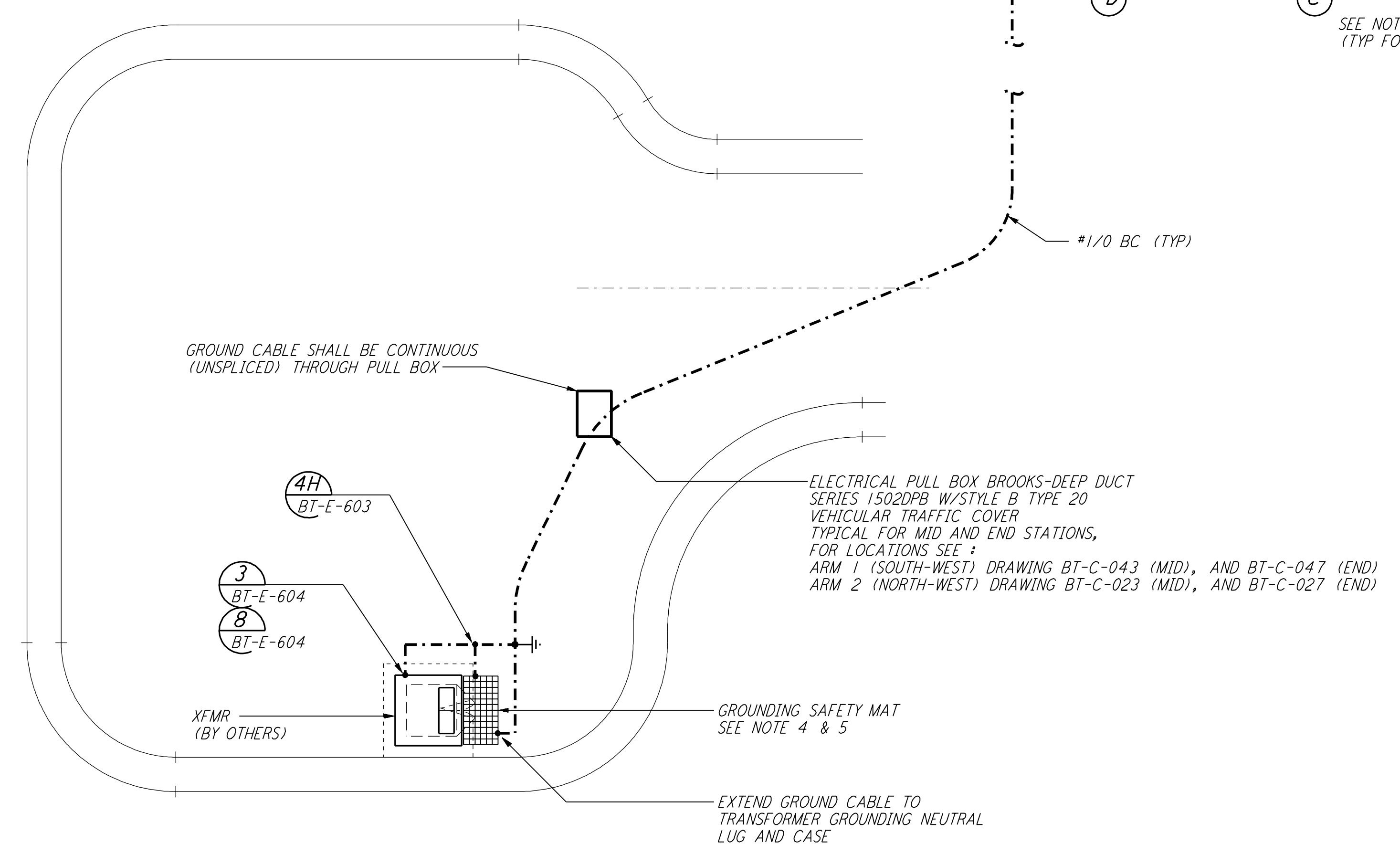
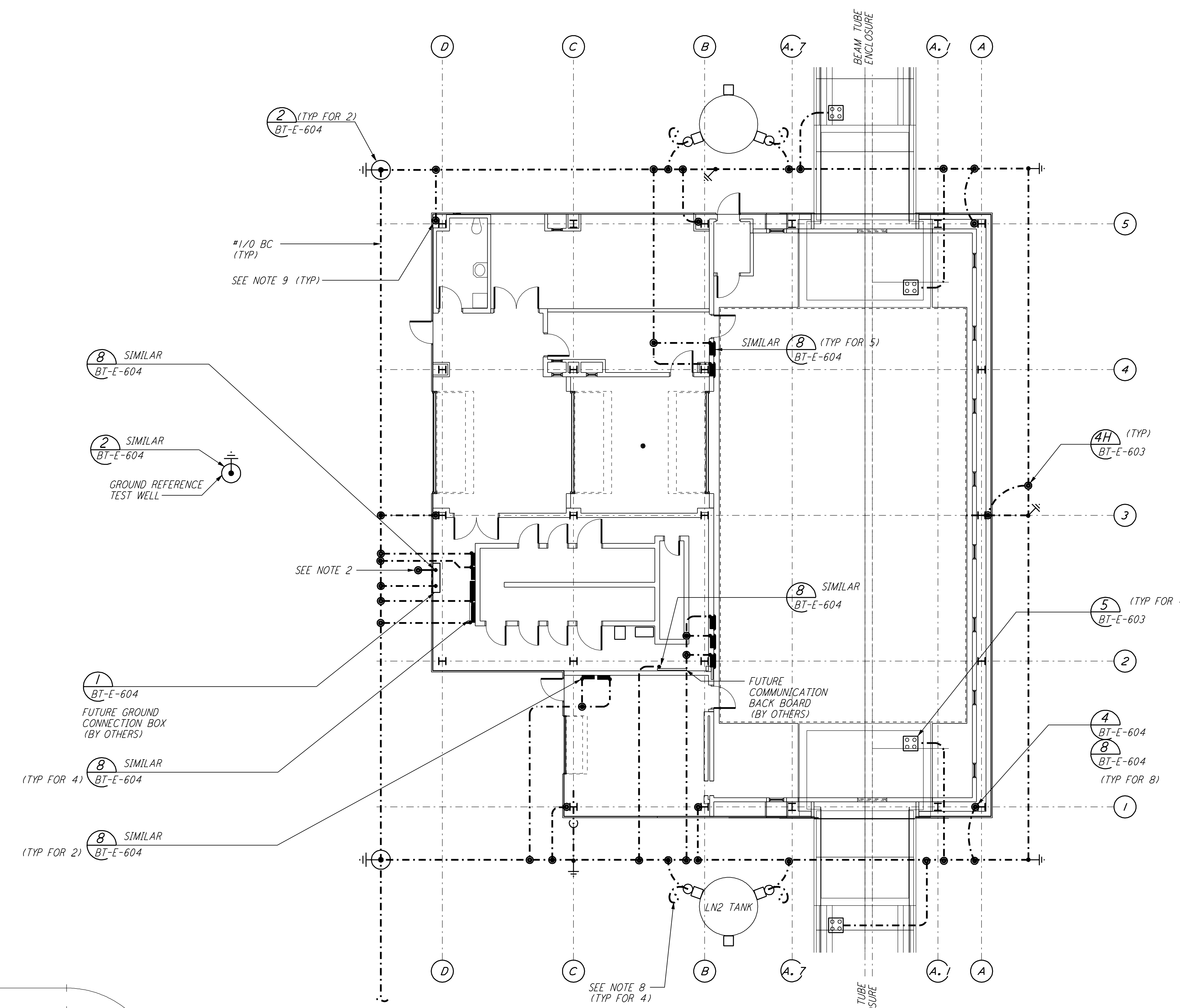
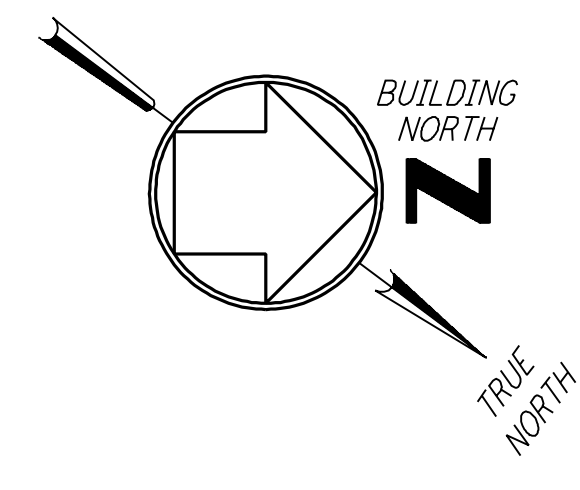


NOTES:

- SEE SPECIFICATION SECTION 16375 "ELECTRICAL DISTRIBUTION SYSTEM, UNDERGROUND" FOR DUCTBANK CONSTRUCTION SPECIFICATION.
- SEE SPECIFICATION SECTION 16455 "SECONDARY GROUNDING" FOR GROUNDING SYSTEM INSTALLATION SPECIFICATION.
- CONNECT GROUNDING CONDUCTOR TO REBAR AT BOTTOM OF FOUNDATION. REBAR SHALL BE AT LEAST 20 FEET LONG AND 1/2" DIAMETER.
- GROUNDING MAT FOR PERSONNEL PROTECTION SHALL BE A PREFABRICATED 4'-0" X 6'-0" MAT WITH A 6" X 6" GRID, 40% CONDUCTIVITY COPPERWELD, WITH CENTER WIRE # 1/0 AWG, ERICO MFR. CABLE TO MESH TYPE PT, MOLD PTC-1G2C, WELD METAL #65.
- GROUNDING MAT SHALL BE INSTALLED 12" DEEP MINIMUM AND ADJACENT TO HIGH VOLTAGE PRIMARY SIDE.
- SEE SPECIFICATION SECTION 16670 FOR LIGHTNING PROTECTION MATERIAL.
- GROUND CONNECTION TO STRUCTURAL STEEL SHALL BE EXOTHERMIC WELD TYPE, AND APPROPRIATE FOR THE CABLE AND STRUCTURAL STEEL.
- COIL AND TAPE GROUND CONDUCTOR AT TANK FOUNDATION, FOR FUTURE CONNECTION BY TANK VENDOR.
- GROUND CABLE THAT STUBS UP THROUGH THE CONCRETE SLAB SHALL BE INSTALLED IN A PROTECTIVE SLEEVE AND 5'-0" OF GROUND CABLE COILED AND TAPED FOR FUTURE CONNECTION.



This document and the design it covers are the property of PARSONS. They are loaned only with the borrower's expressed written agreement that they will not be reproduced, copied, loaned, exhibited, or used in any other way, except by written consent from PARSONS to the borrower.

NO.	DATE	BY	CHKD	ENGR	PROJ	DESCRIPTION
A	4-15-96				TDM	CHANGE ORDER #4

DRAWN	M. M.
CHECKED	
ENGINEER	
PROJ	

PARSONS
 100 WEST WALNUT STREET
 PASADENA, CALIFORNIA

LIGO
 CALIFORNIA INSTITUTE OF TECHNOLOGY
 MASSACHUSETTS INSTITUTE OF TECHNOLOGY

LASER INTERFEROMETER
 GRAVITATIONAL-WAVE OBSERVATORY
BTE SITework & FABRICATION - HANFORD, WA

TITLE: **ELECTRICAL MID & END STATIONS "B" GROUNDING PLAN**

SCALE: AS NOTED
 CONTRACT NUMBER: PP150969
 PROJECT NUMBER: 8094

SHEET NUMBER: **BT-E-601**