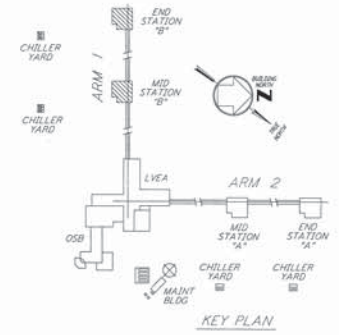
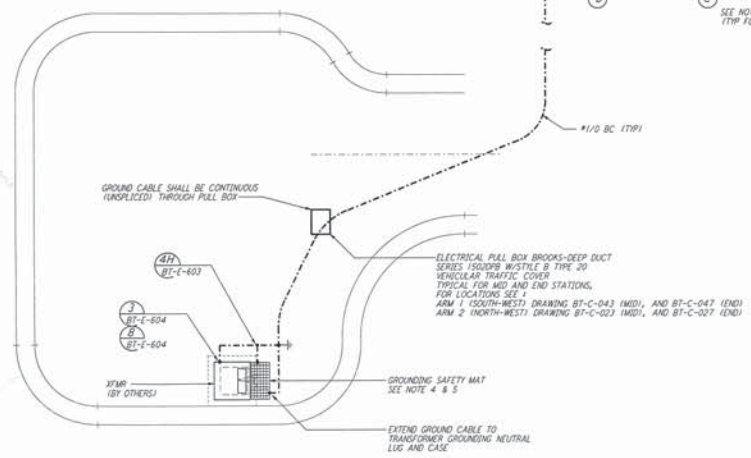
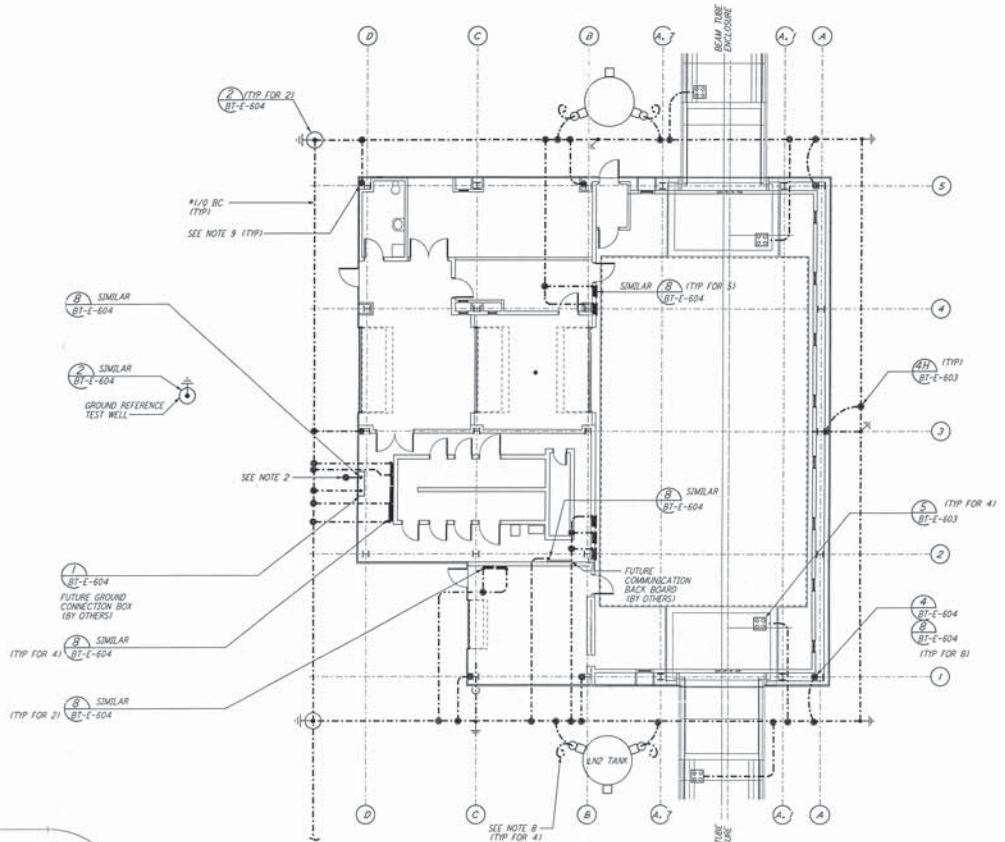
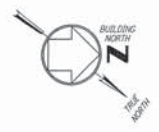


- NOTES:**
- SEE SPECIFICATION SECTION 16375 "ELECTRICAL DISTRIBUTION SYSTEM, UNDERGROUND" FOR DUCT/BANK CONSTRUCTION SPECIFICATION.
  - SEE SPECIFICATION SECTION 16455 "SECONDARY GROUNDING" FOR GROUNDING SYSTEM INSTALLATION SPECIFICATION.
  - CONNECT GROUNDING CONDUCTOR TO REBAR AT BOTTOM OF FOUNDATION. REBAR SHALL BE AT LEAST 20 FEET LONG AND 1/2" DIAMETER.
  - GROUNDING MAT FOR PERSONNEL PROTECTION SHALL BE A PREFABRICATED 4'-0" X 6'-0" MAT WITH A 6" X 6" GRID, 40G CONDUCTIVITY COPPERWELD, WITH CENTER WIRE # 1/2" AWG, EDCO MFR. CABLE TO MESH TYPE PT, WELD PTC-1054, WELD METAL MESH.
  - GROUNDING MAT SHALL BE INSTALLED 12" DEEP MINIMUM AND ADJACENT TO HIGH VOLTAGE PRIMARY SIDE.
  - SEE SPECIFICATION SECTION 16670 FOR LIGHTNING PROTECTION MATERIAL.
  - GROUND CONNECTION TO STRUCTURAL STEEL SHALL BE EXOTHERMIC WELD TYPE, AND APPROPRIATE FOR THE CABLE AND STRUCTURAL STEEL.
  - COB AND TAPE GROUND CONDUCTOR AT TANK FOUNDATION, FOR FUTURE CONNECTION BY TANK VENDOR.
  - GROUND CABLE THAT STUBS UP THROUGH THE CONCRETE SLAB SHALL BE INSTALLED IN A PROTECTIVE SLEEVE AND 5'-0" OF GROUND CABLE COILED AND TAPED FOR FUTURE CONNECTION.



This document and the design it covers are the property of PARSONS. They are loaned only with the borrower's expressed written agreement that they will not be reproduced, copied, loaned, exhibited, or used in any other way, except by written consent from PARSONS to the borrower.

NO.	DATE	BY	CHKD	ENGR	PROJ	DESCRIPTION
A	4-15-96	MM	L.A.	MM	MM	CHANGE ORDER #3

NO.	DATE	BY	CHKD	ENGR	PROJ	DESCRIPTION

DRAWN	MM, AC
CHECKED	
ENGINEER	
PROJ	

**PARSONS**

100 WEST WALNUT STREET  
 PASADENA, CALIFORNIA

**LIGO**

CALIFORNIA INSTITUTE OF TECHNOLOGY  
 MASSACHUSETTS INSTITUTE OF TECHNOLOGY

LASER INTERFEROMETER  
 GRAVITATIONAL-WAVE OBSERVATORY  
 BTE SITEWORK & FABRICATION - HANFORD, WA

TITLE: **ELECTRICAL  
 MID & END STATIONS "B"  
 GROUNDING  
 PLAN**

AS NOTED PP150969 8094

**BT-E-601**