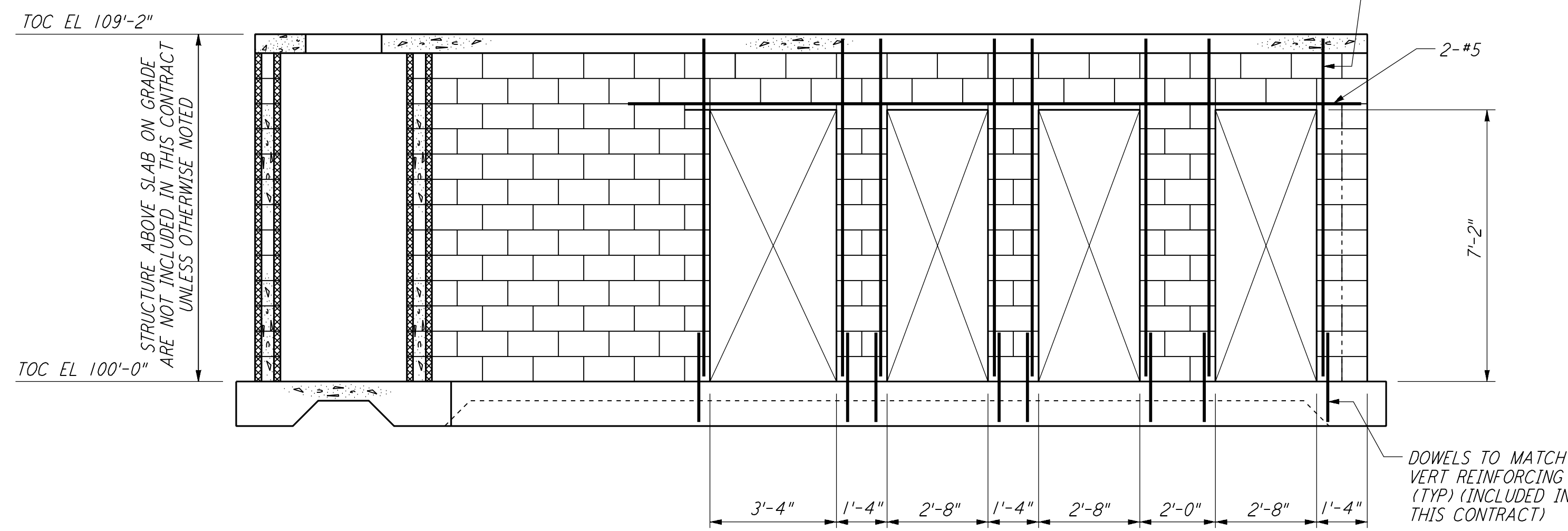
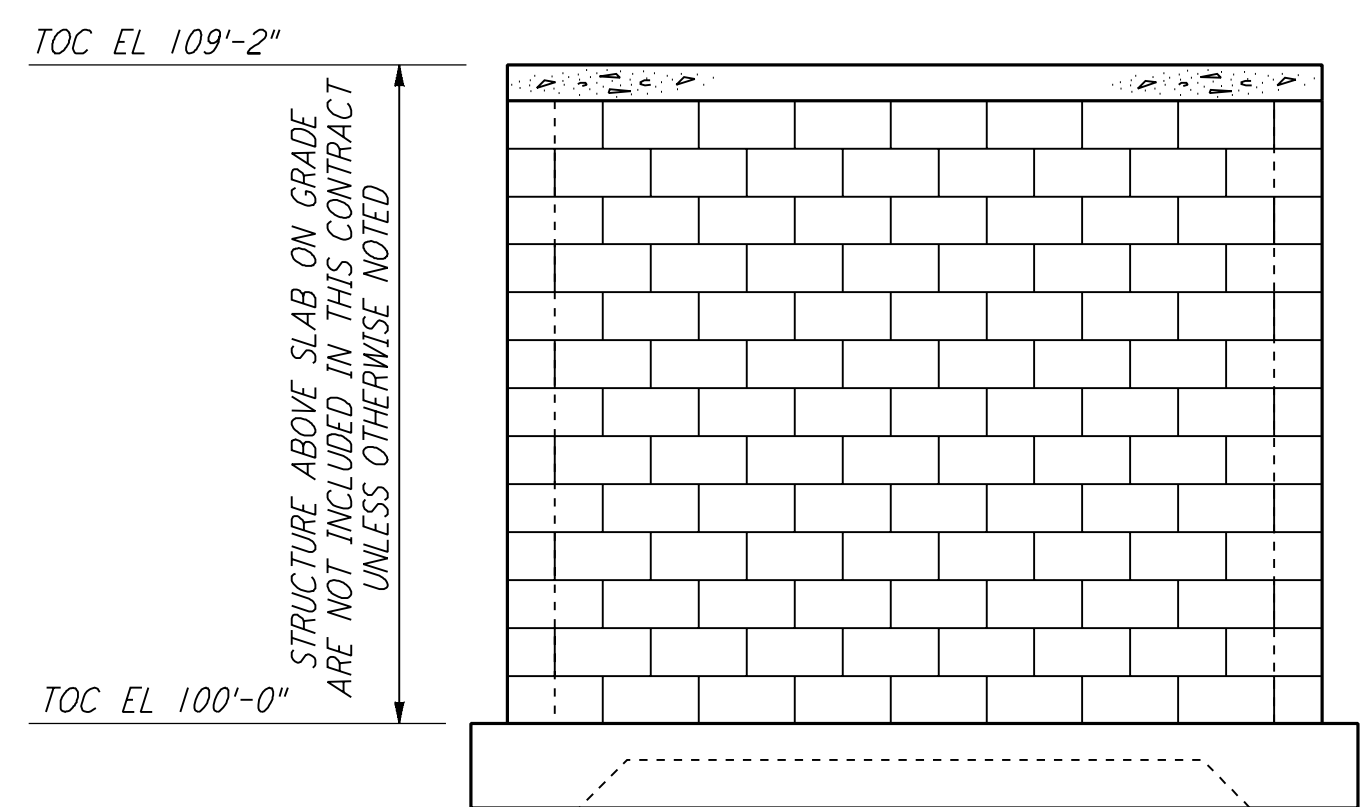


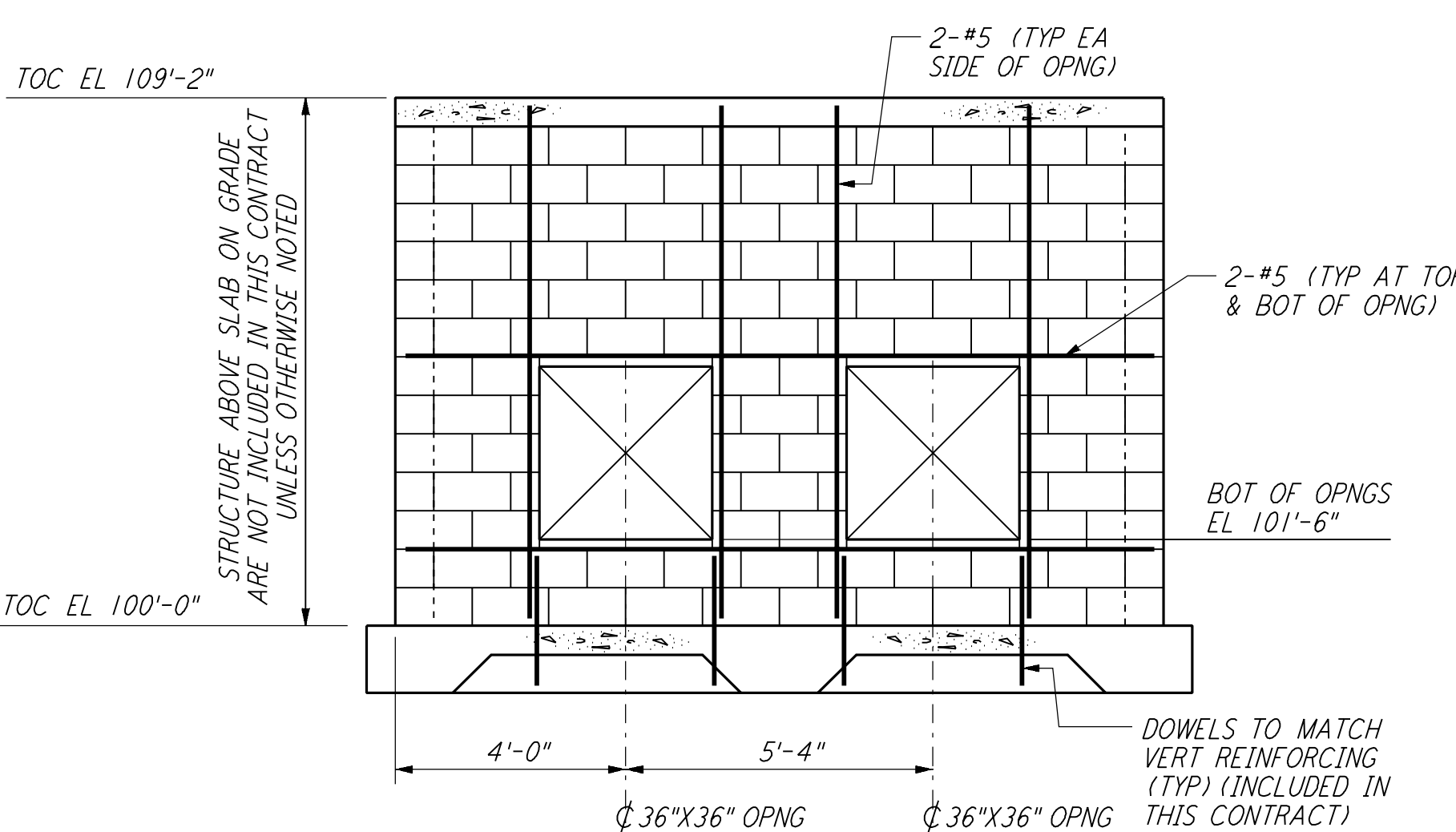
ELEVATION A REF
 $\frac{3}{8}'' = 1'-0''$
 BT-S-606 BT-S-605



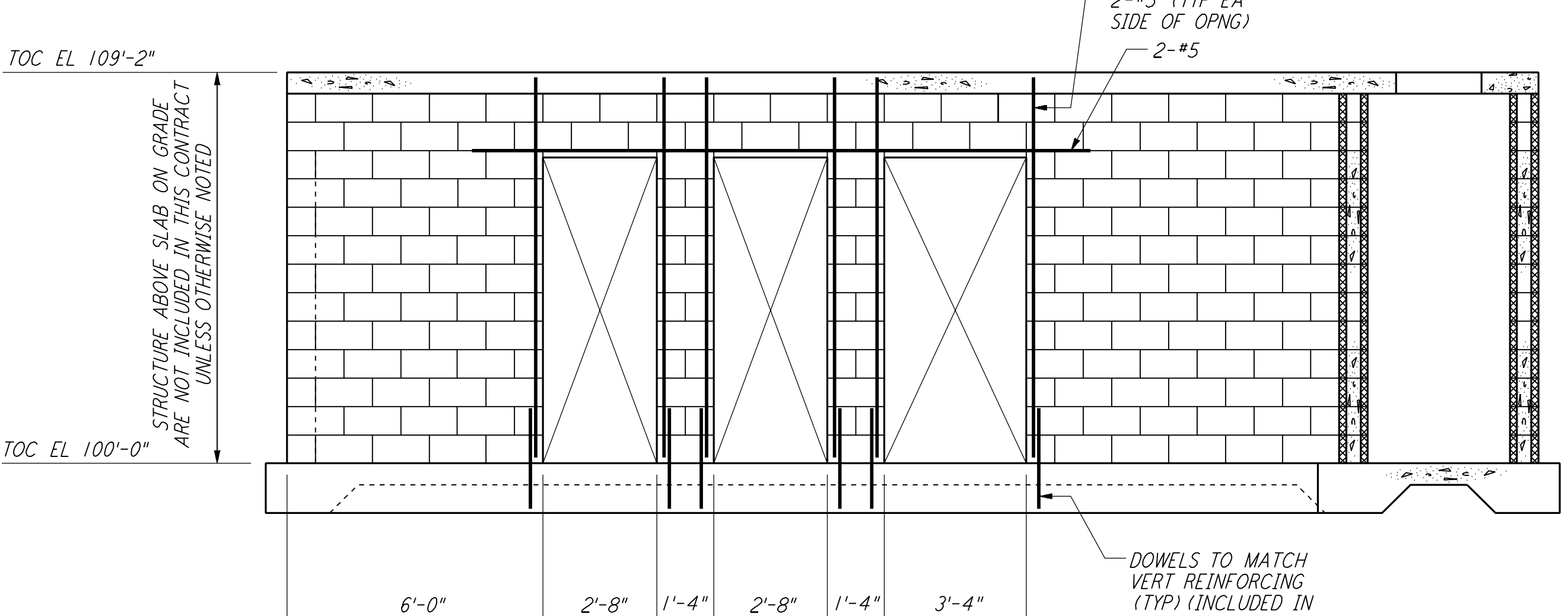
ELEVATION B REF
 $\frac{3}{8}'' = 1'-0''$
 BT-S-606 BT-S-605



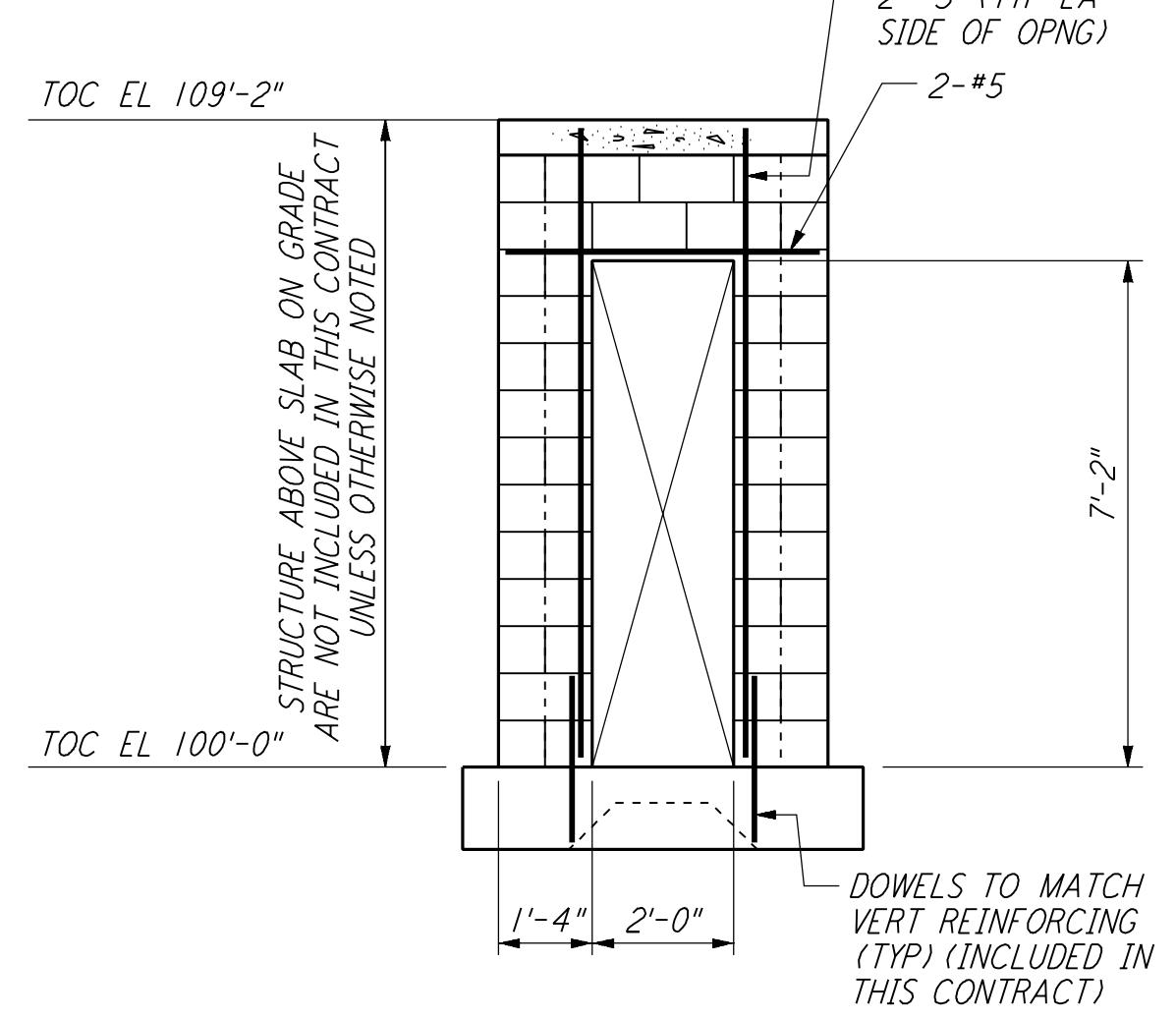
ELEVATION C REF
 $\frac{3}{8}'' = 1'-0''$
 BT-S-606 BT-S-605



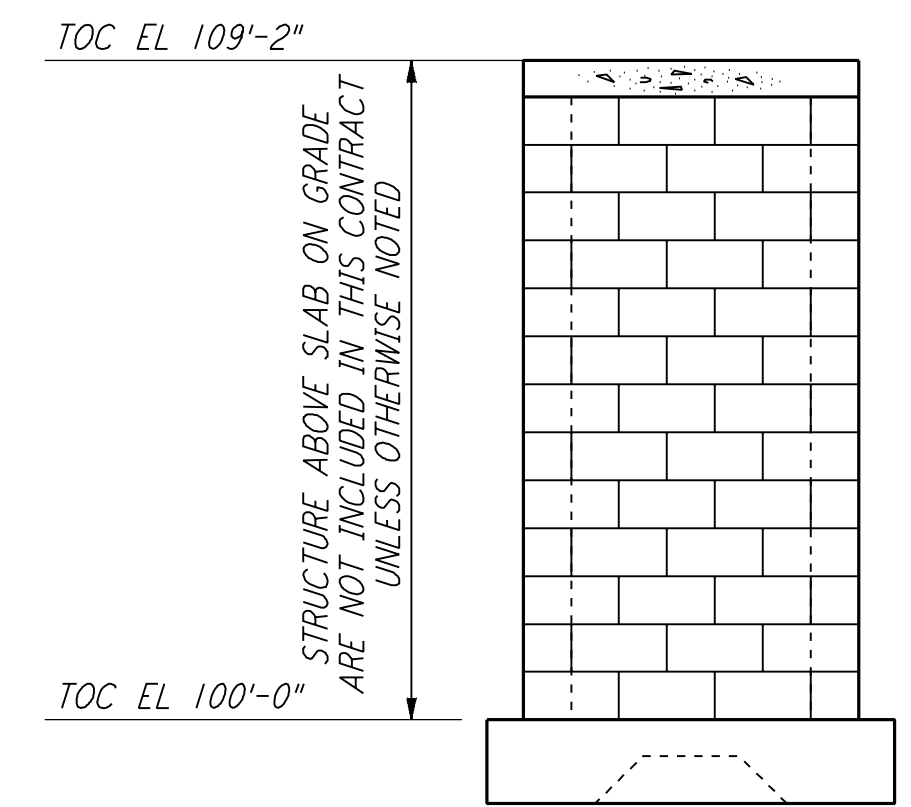
ELEVATION D REF
 $\frac{3}{8}'' = 1'-0''$
 BT-S-606 BT-S-605



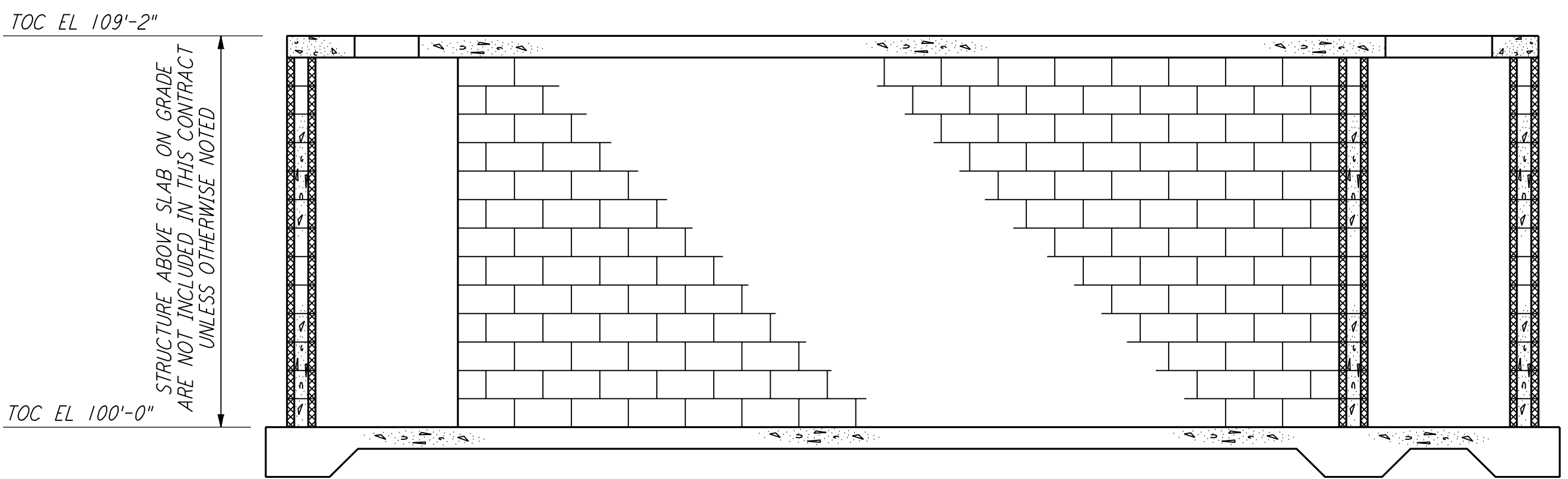
ELEVATION E REF
 $\frac{3}{8}'' = 1'-0''$
 BT-S-606 BT-S-605



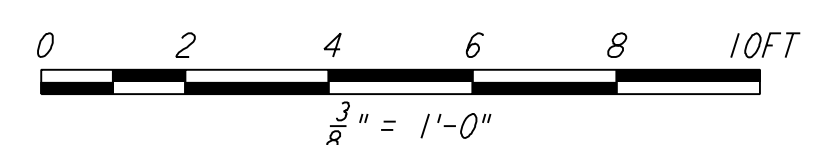
ELEVATION F REF
 $\frac{3}{8}'' = 1'-0''$
 BT-S-606 BT-S-605



ELEVATION G REF
 $\frac{3}{8}'' = 1'-0''$
 BT-S-606 BT-S-605



ELEVATION H REF
 $\frac{3}{8}'' = 1'-0''$
 BT-S-606 BT-S-605



LIGO-D960740-A-O

NO.	DATE	BY	CHKD	ENGR	PROJ	DESCRIPTION
A	4-19-96	MCS	KS	BP		CHANGE ORDER #4

DRAWN	MCS
CHECKED	
ENGINEER	
PROJ	



100 WEST WALNUT STREET
 PASADENA, CALIFORNIA



CALIFORNIA INSTITUTE OF TECHNOLOGY
 MASSACHUSETTS INSTITUTE OF TECHNOLOGY

LASER INTERFEROMETER GRAVITATIONAL-WAVE OBSERVATORY BTE SITework & FABRICATION - HANFORD, WA			
TITLE	SCALE	CONTRACT NUMBER	PROJECT NUMBER
STRUCTURAL MID & END STATIONS "B" AIR HANDLING UNIT ENCLOSURE ELEVS & SECTS	AS NOTED	PP150969	8094
SHEET NUMBER		REVISIONS	
BT-S-606		A	

This document and the design it covers are the property of PARSONS. They are loaned only with the borrower's expressed written agreement that they will not be reproduced, copied, loaned, exhibited, or used in any other way, except by written consent from PARSONS to the borrower.

This document and the design it covers are the property of PARSONS. They are loaned only with the borrower's expressed written agreement that they will not be reproduced, copied, loaned, exhibited, or used in any other way, except by written consent from PARSONS to the borrower.

F:_Sep 11 13:28:25 1998 c:\p1\st\ver\1535_38.dwg I:\D:\E:\ES\2002\ST\B06.dwg