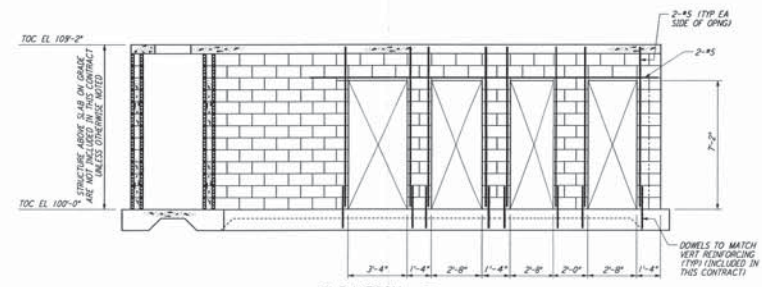
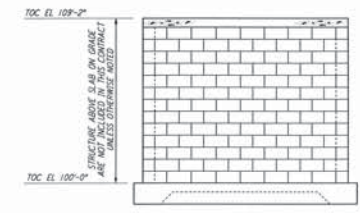


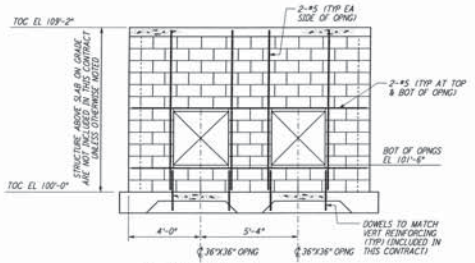
ELEVATION A REF
 7'-11'-0" BT-S-606 BT-S-605



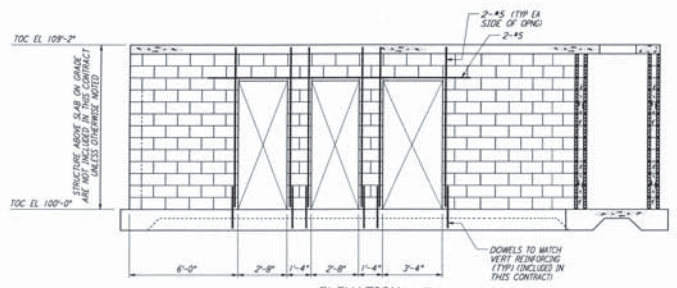
ELEVATION B REF
 7'-11'-0" BT-S-606 BT-S-605



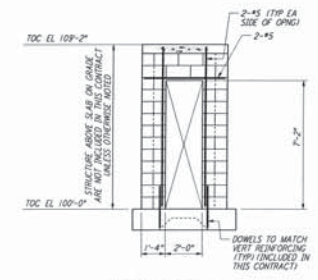
ELEVATION C REF
 7'-11'-0" BT-S-606 BT-S-605



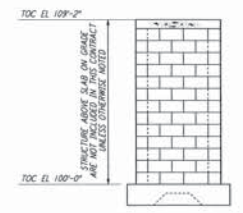
ELEVATION D REF
 7'-11'-0" BT-S-606 BT-S-605



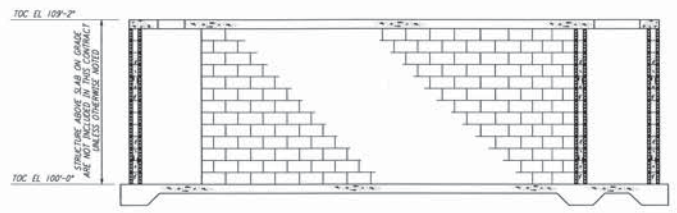
ELEVATION E REF
 7'-11'-0" BT-S-606 BT-S-605



ELEVATION F REF
 7'-11'-0" BT-S-606 BT-S-605



ELEVATION G REF
 7'-11'-0" BT-S-606 BT-S-605



ELEVATION H REF
 7'-11'-0" BT-S-606 BT-S-605

LIGO-D960740-00-0
 0 2 4 6 8 10 FT
 1/8" = 1'-0"

This document and the design it covers are the property of PARSONS and shall not be reproduced, copied, loaned, exhibited, or used in any way without the written consent from PARSONS. The design is the property of PARSONS and shall not be reproduced, copied, loaned, exhibited, or used in any way without the written consent from PARSONS.

NO.	DATE	BY	CHG	ENGR	PROJ	DESCRIPTION
G	1-22-99	MEI	--	--	MDW	ISSUED FOR AS BUILT
A	4-19-98	MCS	KS	BP		CHANGE ORDER #4

AS-BUILT DRAWINGS

DRAWN	MCS
CHECKED	
ENGINEER	
PROJ	

PARSONS
 100 WEST WALNUT STREET
 PASADENA, CALIFORNIA

LIGO
 CALIFORNIA INSTITUTE OF TECHNOLOGY
 MASSACHUSETTS INSTITUTE OF TECHNOLOGY

LASER INTERFEROMETER
 GRAVITATIONAL-WAVE OBSERVATORY
 BTE SITENWORK & FABRICATION - HANFORD, WA

STRUCTURAL
 MID & END STATIONS "B"
 AIR HANDLING UNIT
 ENCLOSURE ELEVS & SECTS

AS NOTED PP150969 8094
BT-S-606