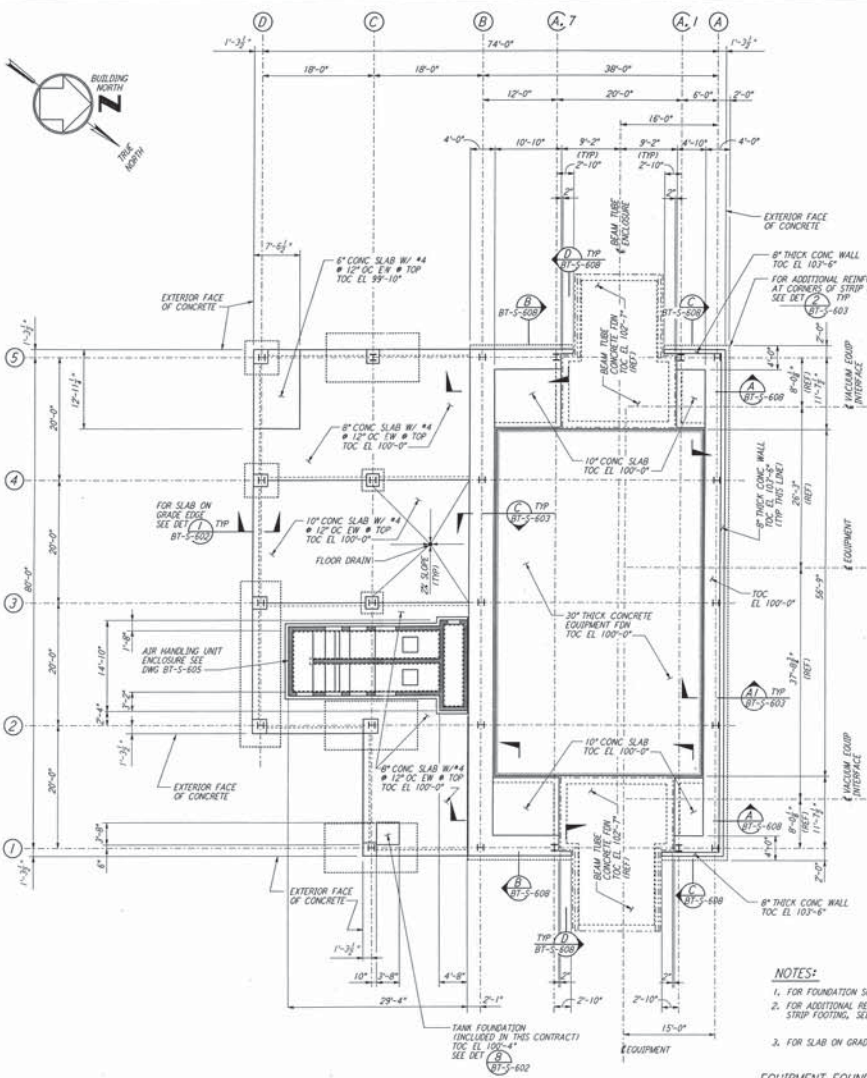


This document and the design it covers are the property of PARSONS. They are loaned only with the borrower's expressed written agreement that they will not be reproduced, copied, loaned, exhibited, or used in any other way, except by written consent from PARSONS.



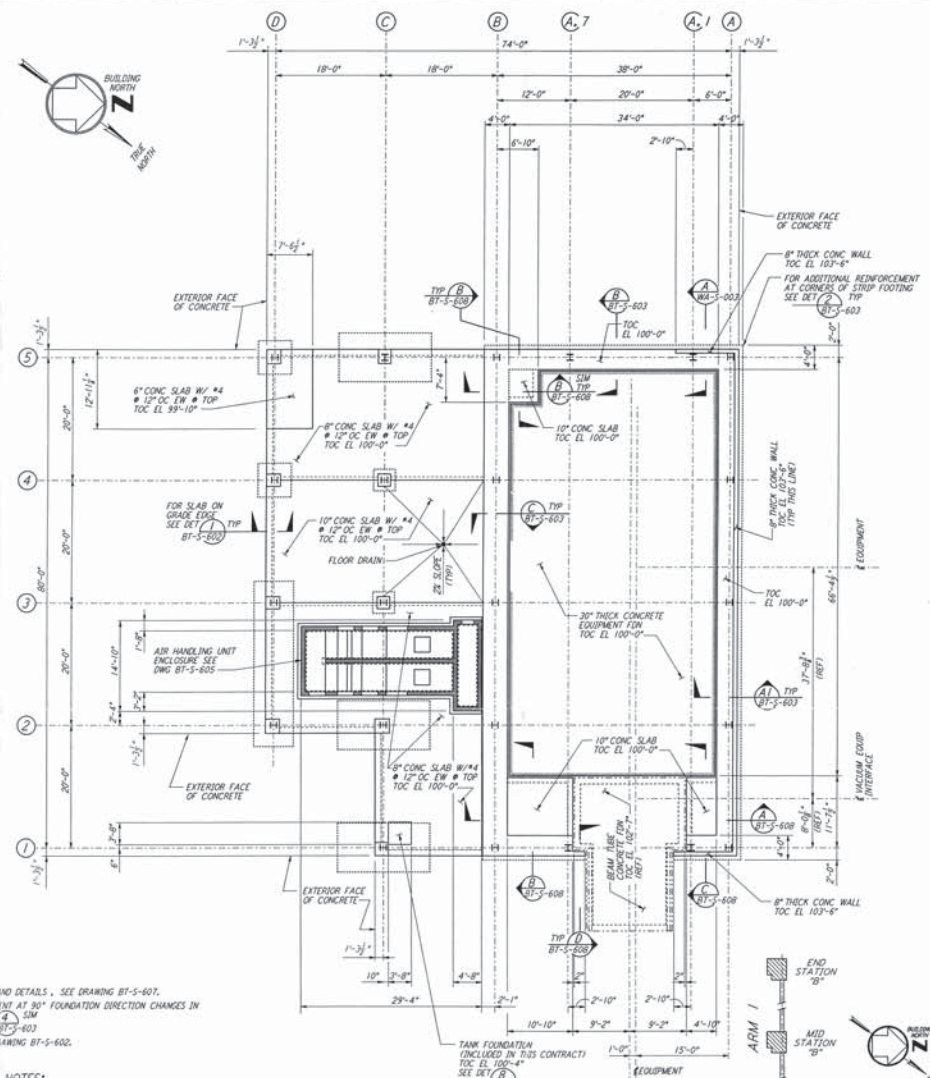
ARM 1 (SOUTHWEST ARM)
 MID STATION "B" FOUNDATION PLAN
 1/4" = 1'-0"
 DATUM POINT EL 100'-0" = EL 532.22'

NOTES:

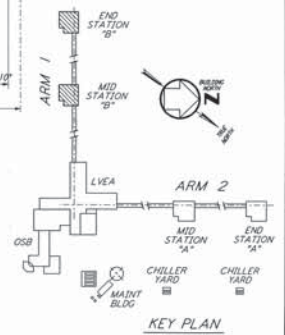
1. FOR FOUNDATION SCHEDULE AND DETAILS, SEE DRAWING BT-S-607.
2. FOR ADDITIONAL REINFORCEMENT AT 90° FOUNDATION DIRECTION CHANGES IN STRIP FOOTING, SEE DETAIL BT-S-603.
3. FOR SLAB ON GRADE, SEE DRAWING BT-S-602.

EQUIPMENT FOUNDATION NOTES:

1. CONCRETE FOR EQUIPMENT FOUNDATION SHALL BE PLACED IN MULTIPLE LIFTS OF ONE (1) FOOT OR MORE WITH A FINAL LIFT OF SIX (6) INCHES.
2. FIBERMESH FIBERS (MANUFACTURED BY FIBERMESH, CHATTANOOGA, TENNESSEE OR EQUAL) SHALL BE MIXED WITH CONCRETE FOR THE FINAL LIFT OF SIX (6) INCHES FOR THE EQUIPMENT FOUNDATION.
3. CONCRETE SURFACE SHALL BE CLEANED, RAKED AND ROUGHENED TO DEVELOPE BOND BETWEEN CONCRETE LAYERS.
4. TOP REINFORCEMENT OF EQUIPMENT FOUNDATION SHALL HAVE 1/2" CLEAR COVER. CONTRACTOR SHALL TAKE ALL THE NECESSARY PRECAUTIONS TO MAINTAIN UNIFORM COVER.
5. CONTRACTOR SHALL HAVE SPARE PUMPS TO ENSURE UNINTERRUPTED PLACEMENT OF CONCRETE.
6. EQUIPMENT FOUNDATION SHALL BE CURED BY MEMBRANE CURING METHOD AS PER SPECIFICATIONS.



ARM 1 (SOUTHWEST ARM)
 END STATION "B" FOUNDATION PLAN
 1/4" = 1'-0"
 DATUM POINT EL 100'-0" = EL 535.26'



NO.	DATE	BY	CHKD	ENGR	PROJ	CHANGE ORDER #4	DESCRIPTION
A	4-13-98	MCS	AS	JP	WJG		

DESIGNED	ACMS
CHECKED	
ENGINEER	
PROJ	

PARSONS
 100 WEST WALNUT STREET
 PASADENA, CALIFORNIA

LIGO
 CALIFORNIA INSTITUTE OF TECHNOLOGY
 MASSACHUSETTS INSTITUTE OF TECHNOLOGY

LASER INTERFEROMETER
 GRAVITATIONAL-WAVE OBSERVATORY
 BTE STEWWORK & FABRICATION - HANFORD, WA

AS NOTED PP150969 8094
BT-S-604