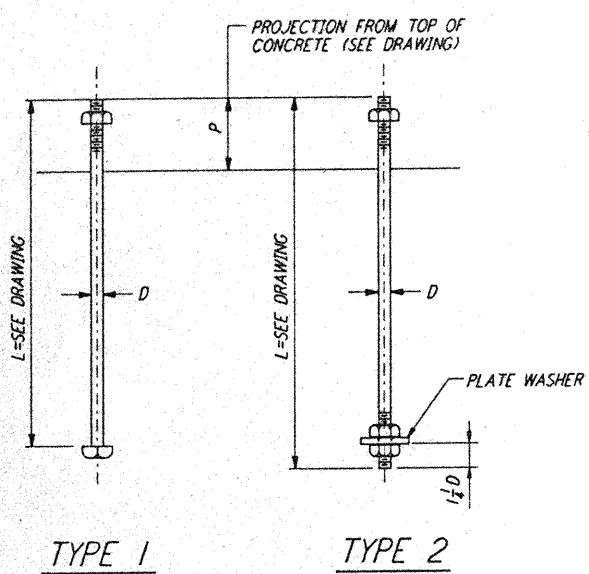


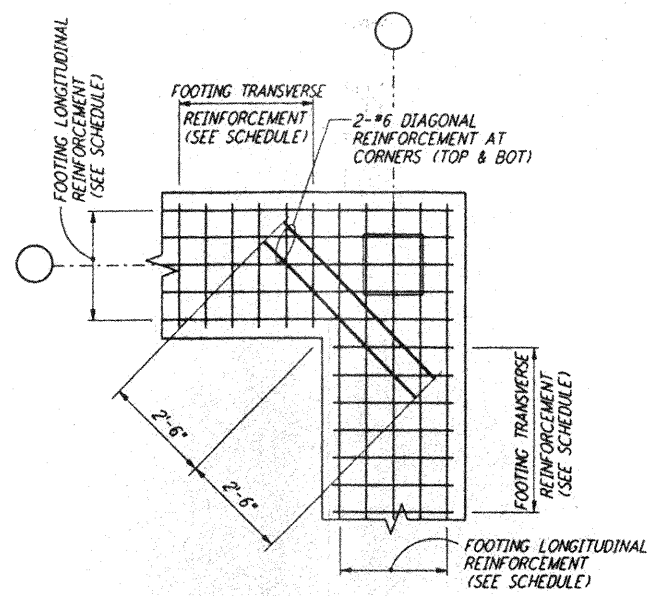
**NOTES:**

1. BOLT MATERIAL SHALL BE IN ACCORDANCE WITH ASTM A307, UNLESS OTHERWISE SPECIFIED.
2. USE UNIFIED NATIONAL COARSE THREAD, CLASS 2 FIT.
3. USE HEAVY DOUBLE CHAMFER HEX NUTS UP TO 1", AND HEAVY FLAT FACE HEX NUTS LARGER THAN 1".
4. PROVIDE 1 HEX NUT FOR EACH BOLT, UNLESS OTHERWISE NOTED ON DESIGN DRAWINGS.
5. PLATE WASHER MATERIAL SHALL BE ASTM A36, UNLESS OTHERWISE NOTED.
6. FABRICATOR SHALL BUNDLE AND TAG BOLTS BY INDIVIDUAL FOUNDATIONS OR MEMBERS. TAGS SHALL BE WEATHER RESISTANT, WITH MARKS AT LEAST 3/4" HIGH, AND FIRMLY WIRED TO BUNDLES.
7. SLEEVES SHALL NOT BE USED UNLESS SPECIFIED ON THE DESIGN DRAWINGS.

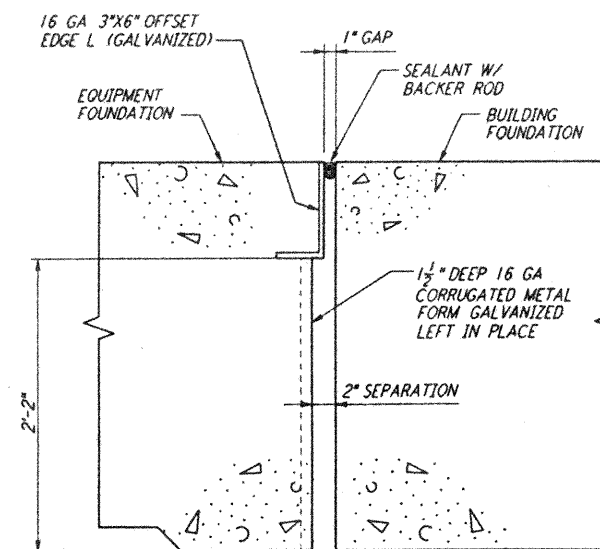


**TYPE 1**      **TYPE 2**  
**ANCHOR BOLTS DETAILS** (1)

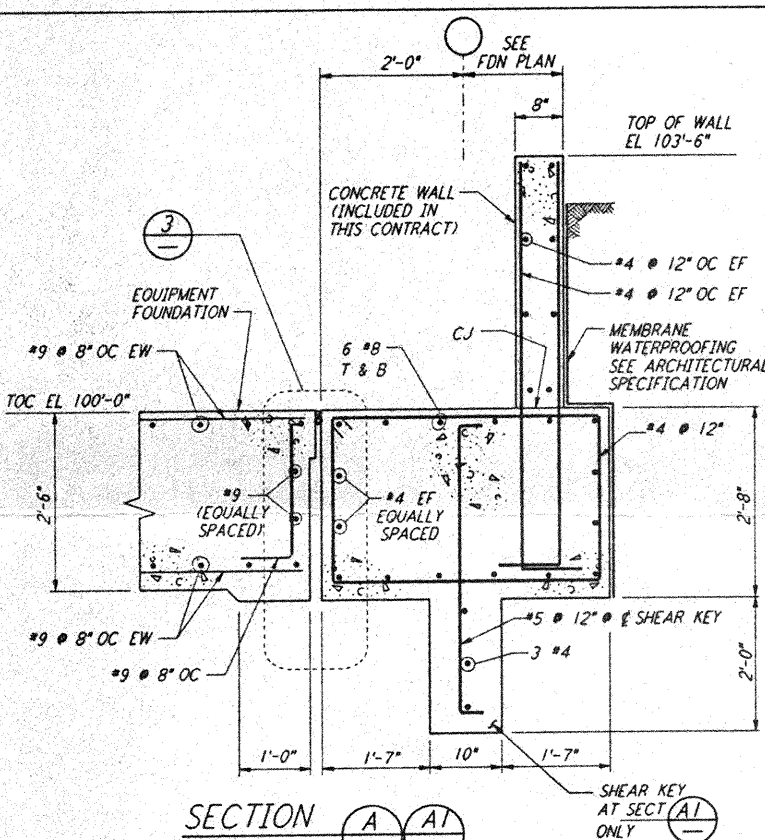
DIA D	PLATE WASHER	SLEEVE IF REQ'D		THREAD LENGTH	DIA D
		DIA	LENGTH		
1/2"		2"	5"	1 1/2"	1/2"
3/8"		2"	5"	2 1/2"	3/8"
3/4"		2"	7"	2 1/2"	3/4"
1"		2"	7"	2 1/2"	1"
1"	2 1/2" X 2 1/2" X 3/8"	3"	10"	3 1/2"	1"
1 1/8"	3" X 3" X 1/2"	3"	10"	3 3/8"	1 1/8"
1 1/4"	3 1/2" X 3 1/2" X 1/2"	3"	10"	4"	1 1/4"
1 1/2"	3 3/4" X 3 3/4" X 1/2"	4"	15"	4 1/2"	1 1/2"
1 3/4"	3 3/4" X 3 3/4" X 5/8"	4"	15"	4 1/2"	1 3/4"



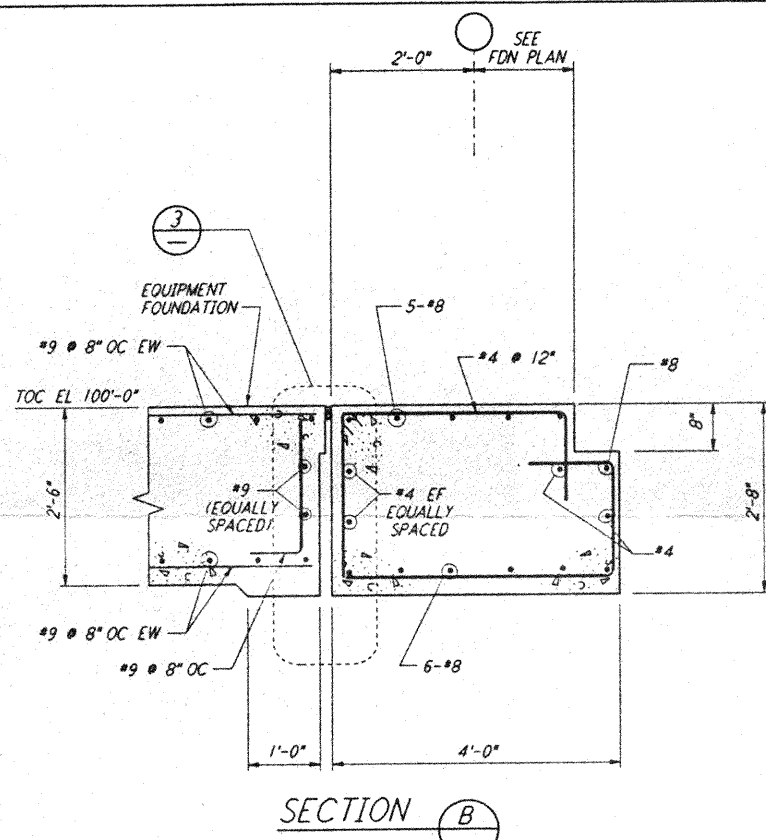
**FOOTING DIAGONAL REINFORCEMENT AT CORNERS**  
**DETAIL** (2)



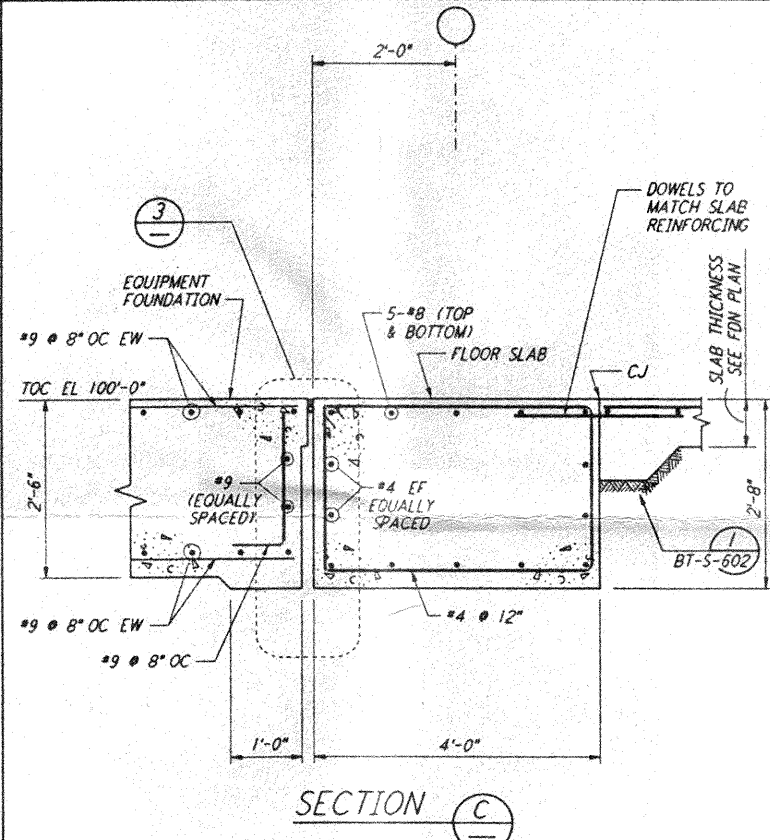
**EQUIP FDN & BLDG FDN INTERFACE**  
**DETAIL** (3)



**SECTION A-A**



**SECTION B-B**



**SECTION C-C**

**NOTES:**

1. FOR GENERAL NOTES, ABBREVIATIONS AND SYMBOLS, SEE DRAWING BT-S-601.

NO.	DATE	BY	CHKD	ENGR	PROJ	DESCRIPTION
A	4-19-96	MCS	KS	#1	MAN	CHANGE ORDER #4

DRAWN	MCS
CHECKED	
ENGINEER	
PROJ	

**PARSONS**  
100 WEST WALNUT STREET  
PASADENA, CALIFORNIA

**LIGO**  
CALIFORNIA INSTITUTE OF TECHNOLOGY  
MASSACHUSETTS INSTITUTE OF TECHNOLOGY

LASER INTERFEROMETER  
GRAVITATIONAL-WAVE OBSERVATORY  
BTE SITEWORK & FABRICATION - HANFORD, WA

SCALE	CONTRACT NUMBER	PROJECT NUMBER
NONE	PP150969	8094

STRUCTURAL STANDARD  
CONCRETE DETAILS SHEET 2  
**BT-S-603**  
160-0960137-14-0

of PARSONS. They are loaned only with the consent from any other way, except by written consent from PARSONS. They are loaned only with the borrower's expressed written agreement that they will