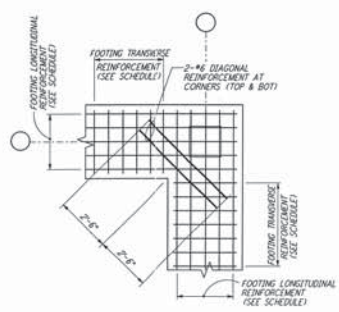


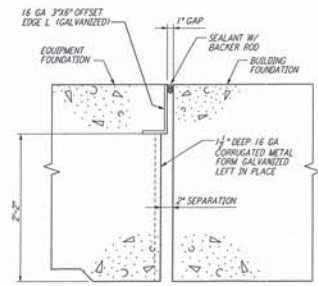
TYPE 1
 TYPE 2
 ANCHOR BOLTS DETAILS

- NOTES:**
- BOLT MATERIAL SHALL BE IN ACCORDANCE WITH ASTM A307, UNLESS OTHERWISE SPECIFIED.
 - USE UNFINISHED NATIONAL COARSE THREADS, CLASS 2 FIT.
 - USE HEAVY DOUBLE CHAMFER HEX NUTS UP TO 1", AND HEAVY FLAT FACE HEX NUTS LARGER THAN 1".
 - PROVIDE 1 HEX NUT FOR EACH BOLT, UNLESS OTHERWISE NOTED ON DESIGN DRAWINGS.
 - PLATE WASHER MATERIAL SHALL BE ASTM A36, UNLESS OTHERWISE NOTED.
 - FABRICATOR SHALL BUNDLE AND TAG BOLTS BY INDIVIDUAL FOUNDATIONS OR MEMBERS. TAGS SHALL BE WEATHER RESISTANT, WITH MARKS AT LEAST 3/4" HIGH, AND FIRMLY WROTE TO BUNDLES.
 - SLEEVES SHALL NOT BE USED UNLESS SPECIFIED ON THE DESIGN DRAWINGS.

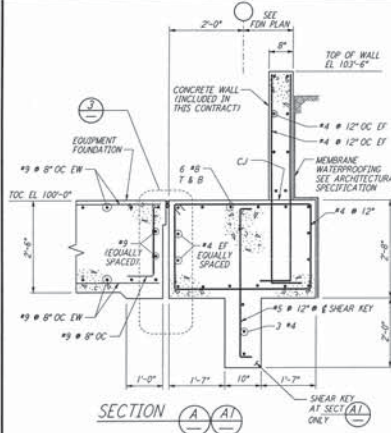
DEA D	PLATE WASHER	SLEEVE IF REQ'D		THREAD LENGTH	DEA D
		DIA	LENGTH		
3/4"		2"	5"	1 1/2"	3/4"
1"		2"	5"	2 1/2"	1"
1 1/4"		2"	7"	2 1/2"	1 1/4"
1 1/2"		2"	7"	2 1/2"	1 1/2"
1 3/4"	2 1/2" x 2 1/2" x 1/8"	3"	10"	3 1/2"	1 3/4"
2"	3" x 3" x 1/4"	3"	10"	3 1/2"	2"
2 1/4"	3 1/2" x 3 1/2" x 1/4"	3"	10"	4"	2 1/4"
2 1/2"	3 1/2" x 3 1/2" x 1/4"	4"	15"	4 1/2"	2 1/2"
2 3/4"	3 1/2" x 3 1/2" x 1/4"	4"	15"	4 1/2"	2 3/4"



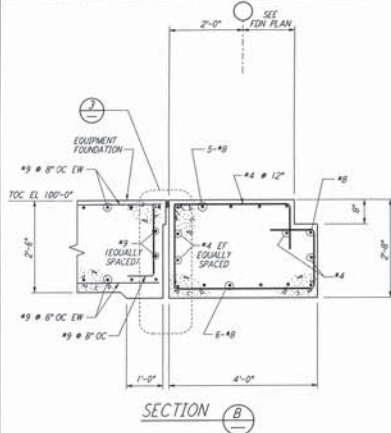
FOOTING DIAGONAL REINFORCEMENT AT CORNERS
 DETAIL



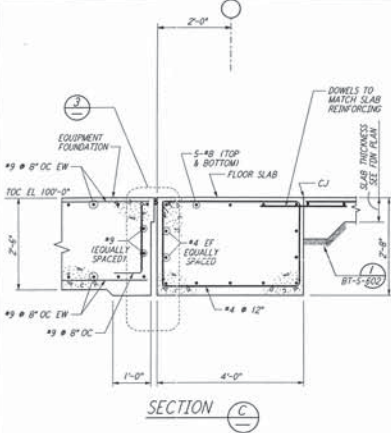
EQUIP FDN & BLDG FDN INTERFACE
 DETAIL



SECTION A-A
 SECTION A1-A1



SECTION B-B



SECTION C-C

- NOTES:**
- FOR GENERAL NOTES, ABBREVIATIONS AND SYMBOLS, SEE DRAWING BT-S-601.

This document and the design it covers are the property of PARSONS. They are loaned only with the borrower's expressed written agreement that they will not be reproduced, copied, loaned, exhibited, or used in any other way, except by written consent from PARSONS.

REV	DATE	BY	CHKD	ENGR	PROJ	DESCRIPTION
A	4-19-96	MCS	K.S.	JF		CHANGE ORDER #4

DRAWN	MCS
CHECKED	
ENGINEER	
PROJ	

PARSONS
 100 WEST WALNUT STREET
 PASADENA, CALIFORNIA

LIGO
 CALIFORNIA INSTITUTE OF TECHNOLOGY
 MASSACHUSETTS INSTITUTE OF TECHNOLOGY

LASER INTERFEROMETER
 GRAVITATIONAL-WAVE OBSERVATORY
 BTE SITEWORK & FABRICATION - HANFORD, WA

STRUCTURAL STANDARD
 CONCRETE DETAILS SHEET 2

BT-S-603