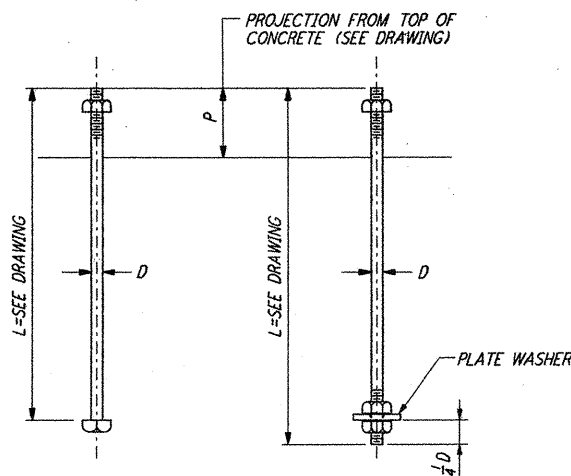


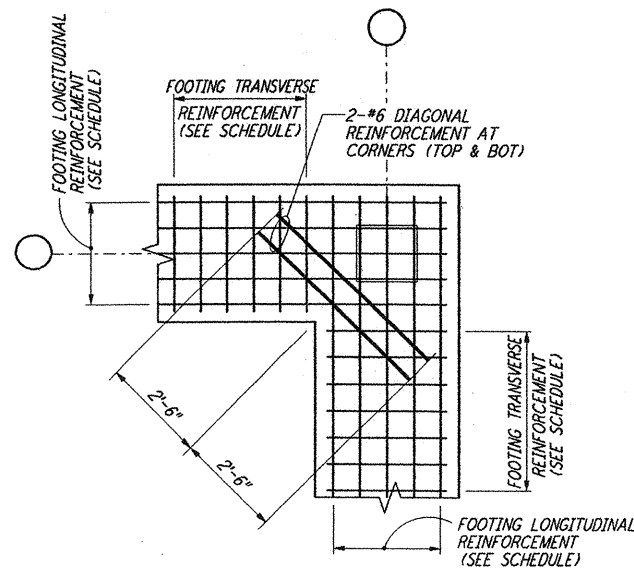
**NOTES:**

1. BOLT MATERIAL SHALL BE IN ACCORDANCE WITH ASTM A307, UNLESS OTHERWISE SPECIFIED.
2. USE UNIFIED NATIONAL COARSE THREAD, CLASS 2 FIT.
3. USE HEAVY DOUBLE CHAMFER HEX NUTS UP TO 1", AND HEAVY FLAT FACE HEX NUTS LARGER THAN 1".
4. PROVIDE 1 HEX NUT FOR EACH BOLT, UNLESS OTHERWISE NOTED ON DESIGN DRAWINGS.
5. PLATE WASHER MATERIAL SHALL BE ASTM A36, UNLESS OTHERWISE NOTED.
6. FABRICATOR SHALL BUNDLE AND TAG BOLTS BY INDIVIDUAL FOUNDATIONS OR MEMBERS. TAGS SHALL BE WEATHER RESISTANT, WITH MARKS AT LEAST 1/2" HIGH, AND FIRMLY WIRED TO BUNDLES.
7. SLEEVES SHALL NOT BE USED UNLESS SPECIFIED ON THE DESIGN DRAWINGS.

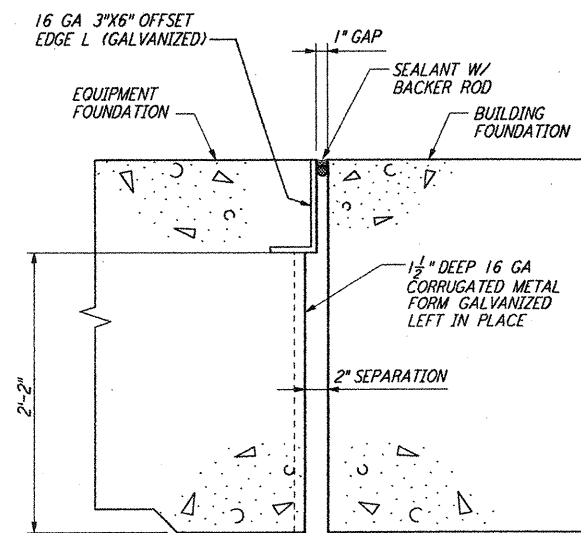
DIA D	PLATE WASHER	SLEEVE IF REQD		THREAD LENGTH	DIA D
		DIA	LENGTH		
1/2"		2"	5"	1 3/4"	1/2"
3/8"		2"	5"	2 1/2"	3/8"
3/4"		2"	7"	2 1/2"	3/4"
7/8"		2"	7"	2 1/2"	7/8"
1"	2 1/2" X 2 1/2" X 3/8"	3"	10"	3 1/2"	1"
1 1/8"	3" X 3" X 1/2"	3"	10"	3 1/2"	1 1/8"
1 1/4"	3 1/2" X 3 1/2" X 1/2"	3"	10"	4"	1 1/4"
1 3/8"	3 1/2" X 3 1/2" X 1/2"	4"	15"	4 1/2"	1 3/8"
1 1/2"	3 3/4" X 3 3/4" X 3/8"	4"	15"	4 3/4"	1 1/2"



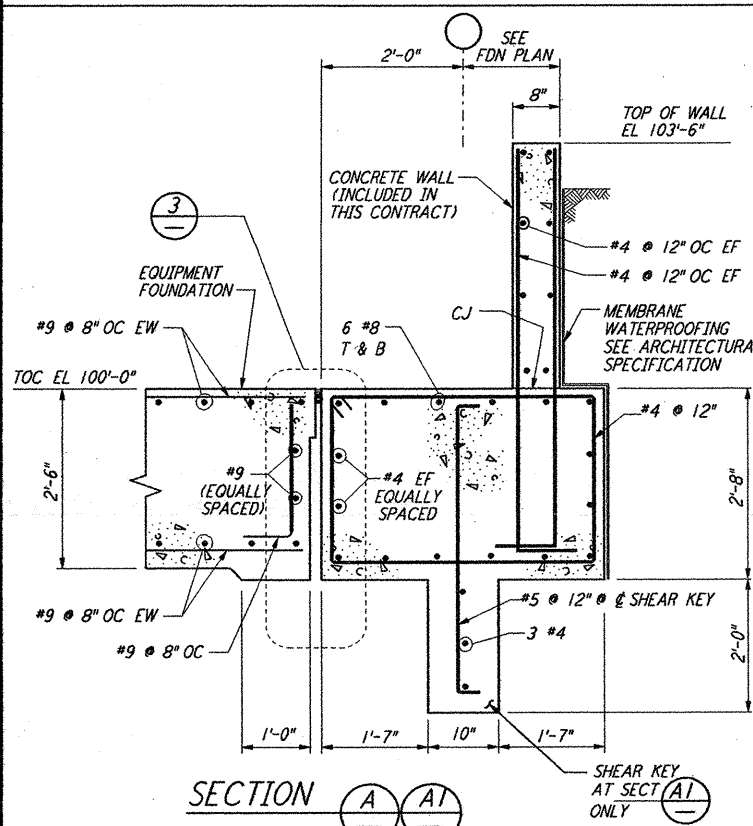
**TYPE 1 TYPE 2**  
**ANCHOR BOLTS DETAILS** (1)



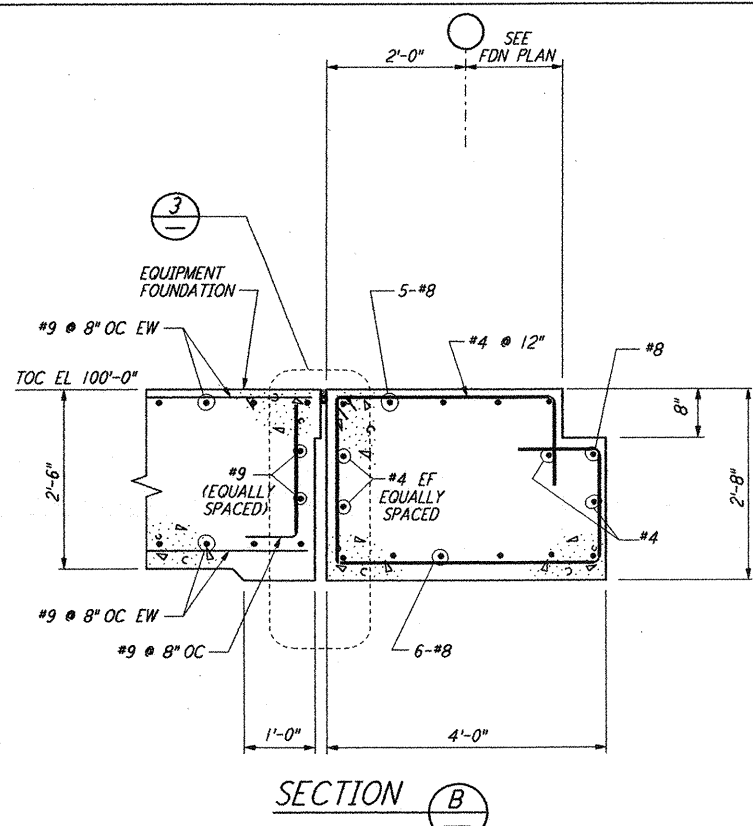
**FOOTING DIAGONAL REINFORCEMENT AT CORNERS**  
 DETAIL (2)



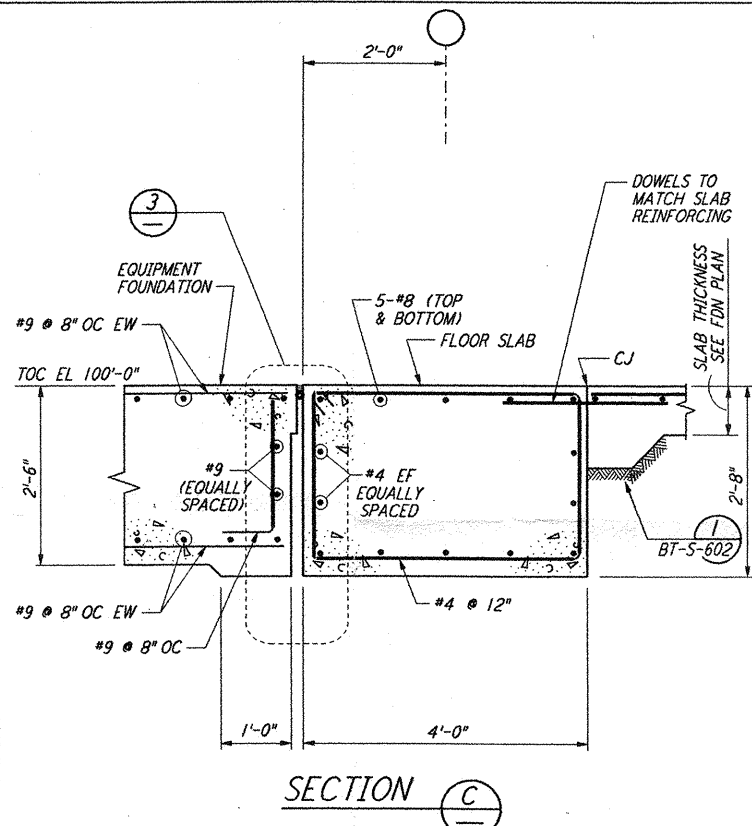
**EQUIPT FDN & BLDG FDN INTERFACE**  
 DETAIL (3)



**SECTION A-A**



**SECTION B-B**



**SECTION C-C**

- NOTES:**
1. FOR GENERAL NOTES, ABBREVIATIONS AND SYMBOLS, SEE DRAWING BT-S-601.

**LIGO-D960737-00-0**

NO.	DATE	BY	CHKD	ENGR	PROJ	DESCRIPTION
0	1-22-99	MEI	--	--	MDW	ISSUED FOR AS BUILT
A	4-19-96	MCS	KS	BP		CHANGE ORDER #4

AS-BUILT DRAWINGS

**PARSONS**  
 100 WEST WALNUT STREET  
 PASADENA, CALIFORNIA

**LIGO**  
 CALIFORNIA INSTITUTE OF TECHNOLOGY  
 MASSACHUSETTS INSTITUTE OF TECHNOLOGY

LASER INTERFEROMETER  
 GRAVITATIONAL-WAVE OBSERVATORY  
 BTE SITENWORK & FABRICATION - HANFORD, WA

STRUCTURAL STANDARD  
 CONCRETE DETAILS SHEET 2

SHEET NUMBER: NONE  
 PROJECT NUMBER: PP150969  
 REVISIONS: 8094  
**BT-S-603**

This document and the design it covers are the property of PARSONS. They are loaned only with the borrower's expressed written agreement that they will not be reproduced, copied, loaned, exhibited, or used in any other way, except by written consent from PARSONS to the borrower.

I:\GORTF.BDR  
 11/08/98 13:44:35  
 BT-S-603.dwg