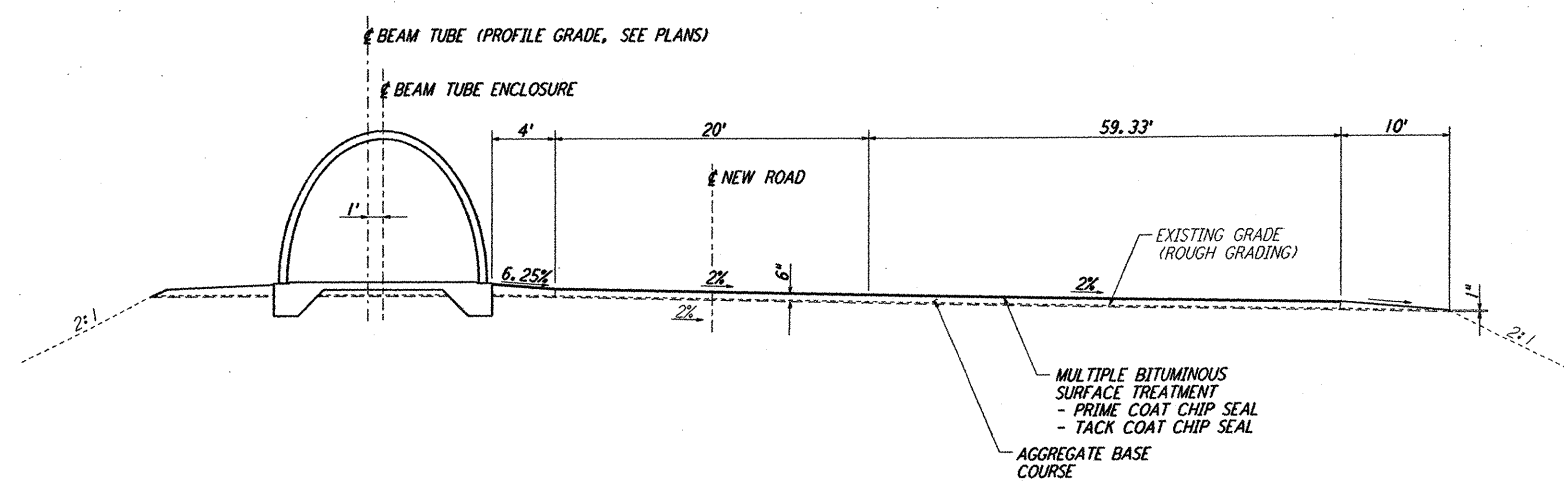
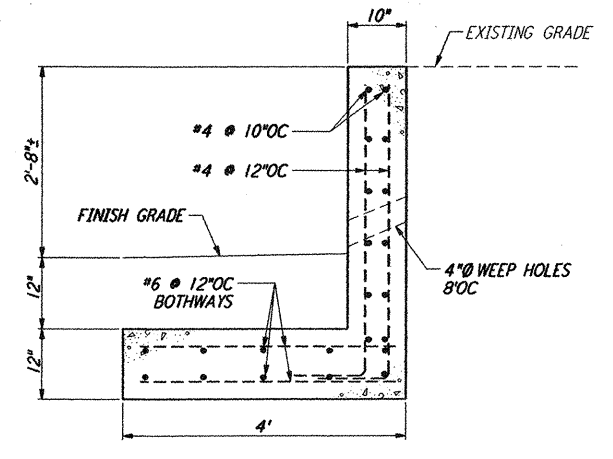


**NOTES:**  
 1. SEE SHEET BT-C-002 FOR GENERAL NOTES, LEGEND AND ABBREVIATIONS.

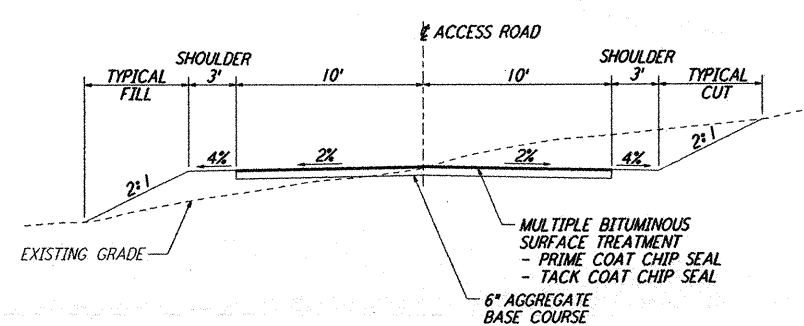


**SECTION A**  
 NOT TO SCALE  
 REF: BT-C-013, BT-C-017, BT-C-018, BT-C-033, BT-C-037, BT-C-038

(# TURNAROUNDS ALONG NORTHWEST AND SOUTHWEST ARMS)



**RETAINING WALL I**  
 NOT TO SCALE  
 REF: BT-C-052, BT-C-046



**ACCESS ROAD B**  
 NOT TO SCALE  
 REF: BT-C-021/022, BT-C-025/026, BT-C-041/042, BT-C-045/046

(ACCESS ROAD FROM MID/END STATION TO CHILLER YARD PAD)

LIGO-D960734-00-0

NO.	DATE	BY	CHKD	ENGR	PROJ	DESCRIPTION
0	1-22-99	MEI	--	--	MDW	ISSUED FOR AS BUILT
A	4-19-96	WRB	TDM	MDW	MDW	CHANGE ORDER NO. 4

AS-BUILT DRAWINGS

**PARSONS**  
 100 WEST WALNUT STREET  
 PASADENA, CALIFORNIA

**LIGO**  
 CALIFORNIA INSTITUTE OF TECHNOLOGY  
 MASSACHUSETTS INSTITUTE OF TECHNOLOGY

LASER INTERFEROMETER GRAVITATIONAL-WAVE OBSERVATORY  
 BTE SITEWORK & FABRICATION - HANFORD, WA

TITLE	SCALE	CONTRACT NUMBER	PROJECT NUMBER
CIVIL GRADING SECTIONS & DETAILS	AS NOTED	PP150969	8094
SHEET NUMBER		REVISIONS	
BT-C-052			

not be reproduced, copied, loaned, exhibited, or used in any other way, except by written consent from PARSONS to the borrower.

This document and the design it covers are the property of PARSONS. They are loaned only with the borrower's expressed written agreement that they will

Thu Jan 21 14:54:52 1999 C:\PLOT\JOB\ES\Y96B2.DWG 52885 K:\96B2\es\962.dwg