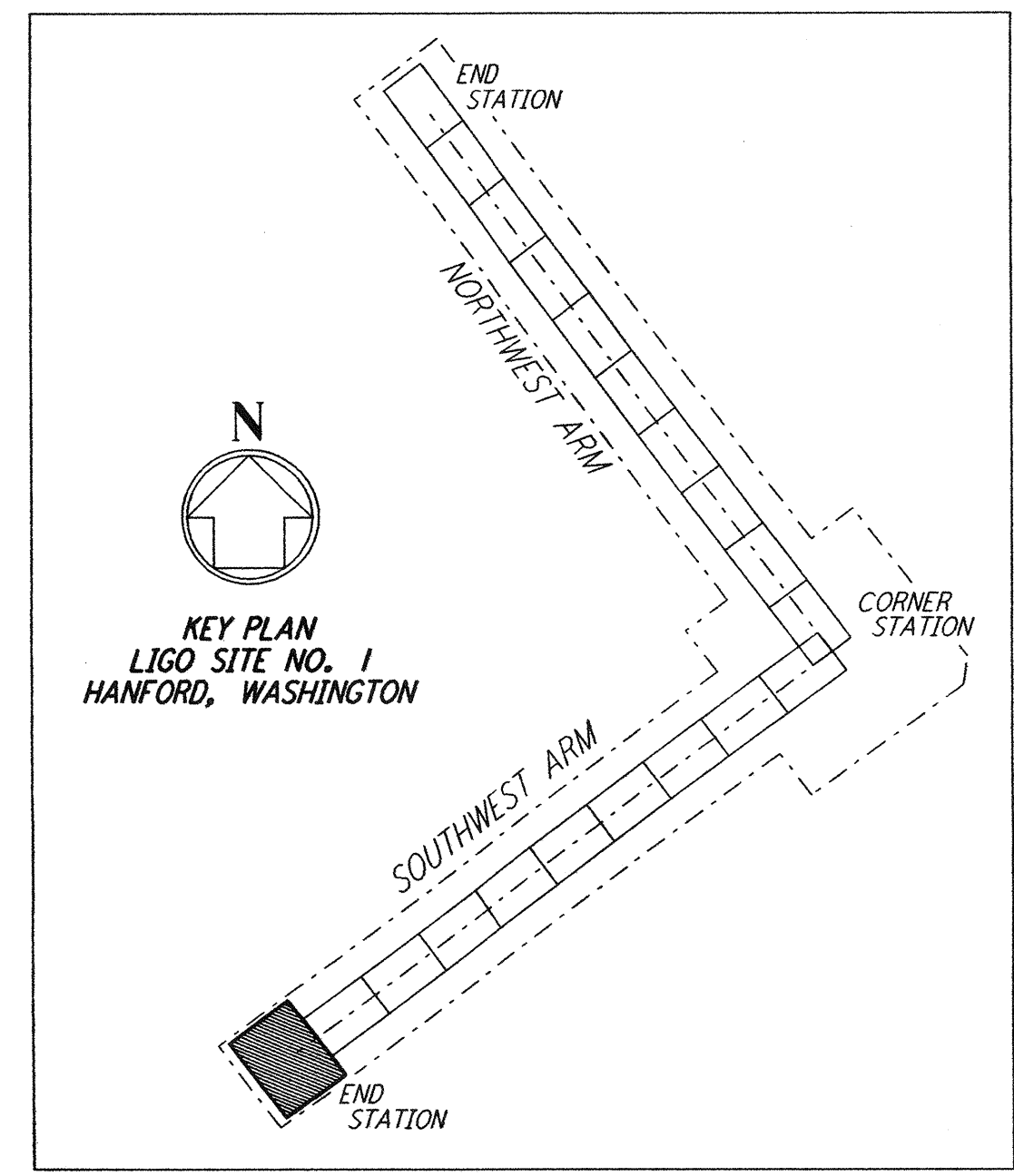
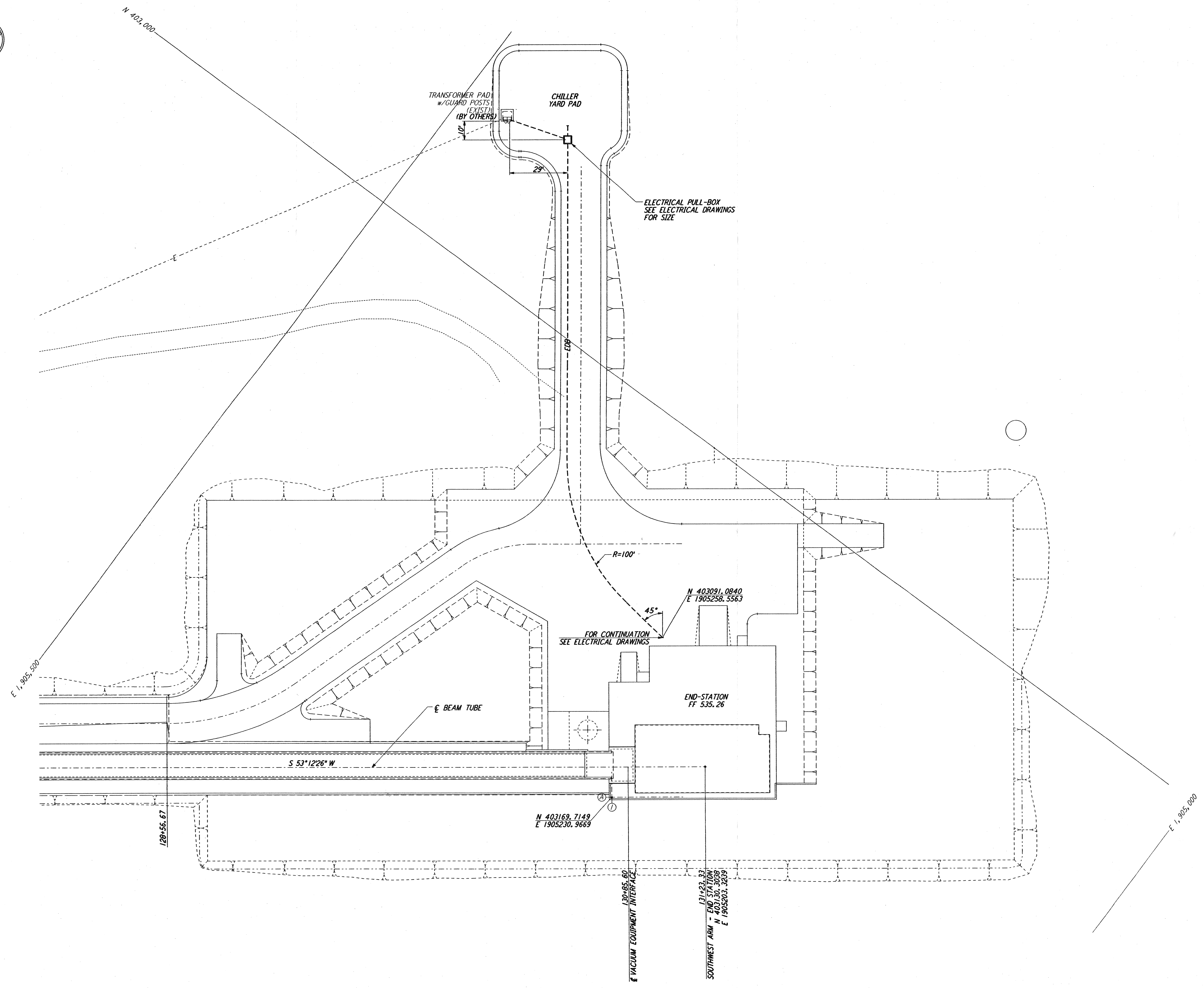
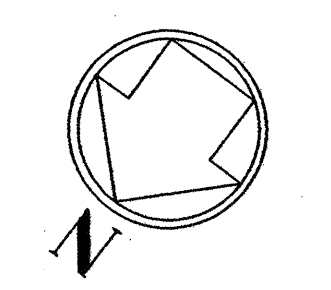


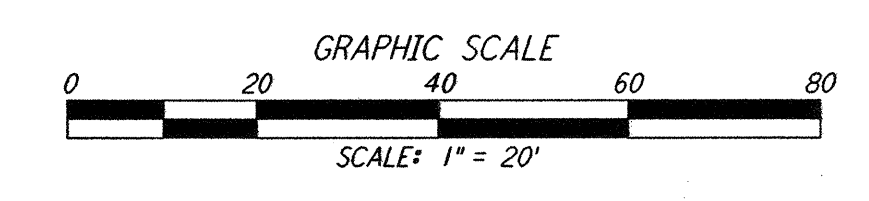
NOTES:
 1. SEE SHEET WA-C-002 FOR GENERAL NOTES, LEGEND AND ABBREVIATIONS.

This document and the design it covers are the property of PARSONS. They are loaned only with the borrower's expressed written agreement that they will not be reproduced, copied, loaned, exhibited, or used in any other way, except by written consent from PARSONS to the borrower.

This document and the design it covers are the property of PARSONS. They are loaned only with the borrower's expressed written agreement that they will not be reproduced, copied, loaned, exhibited, or used in any other way, except by written consent from PARSONS to the borrower.

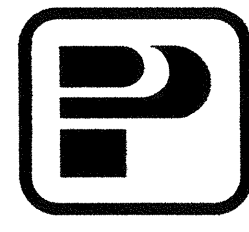



LIGO-D960732-00-0



NO.	DATE	BY	CHKD	ENGR	PROJ	DESCRIPTION
0	1-22-99	MEI	--	--	MDW	ISSUED FOR AS BUILT
A	4-19-96	WRB	TDM	MDW	MDW	CHANGE ORDER NO. 4

DRAWN WRB
 CHECKED
 ENGINEER
 PROJ
AS-BUILT DRAWINGS


PARSONS
 100 WEST WALNUT STREET
 PASADENA, CALIFORNIA


LIGO
 CALIFORNIA INSTITUTE OF TECHNOLOGY
 MASSACHUSETTS INSTITUTE OF TECHNOLOGY

LASER INTERFEROMETER
 GRAVITATIONAL-WAVE OBSERVATORY
BTE SITWORK & FABRICATION - HANFORD, WA
 TITLE: **CIVIL SOUTHWEST ARM END-STATION UTILITY PLAN**
 SCALE: 1" = 20'
 CONTRACT NUMBER: PPI50969
 PROJECT NUMBER: 8094
BT - C - 047