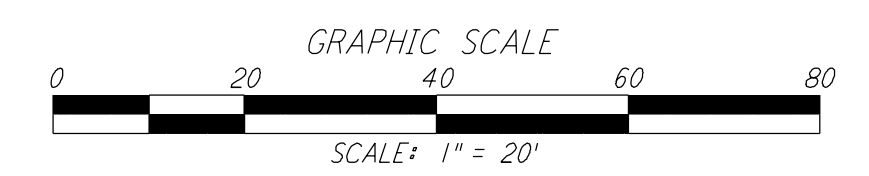
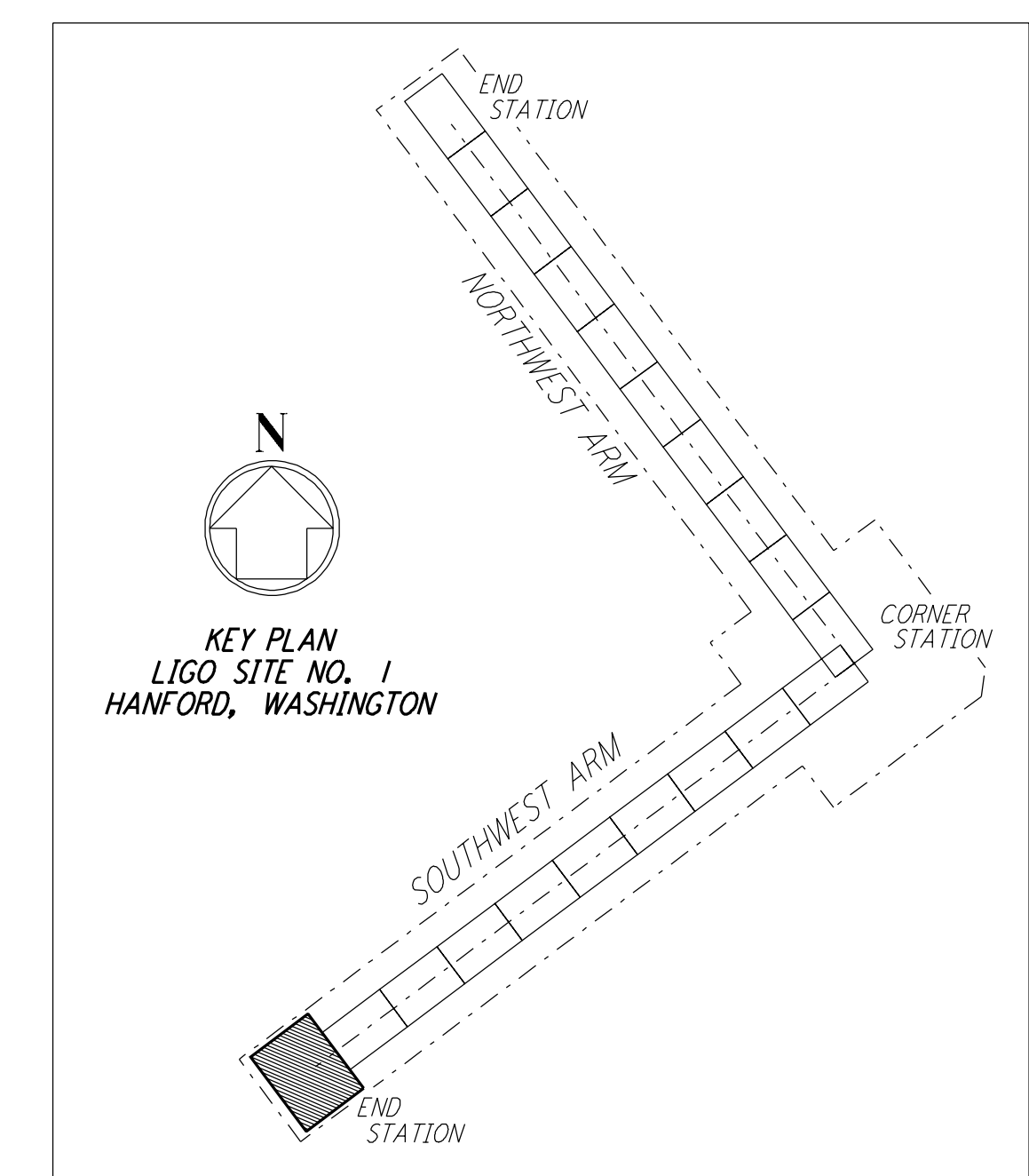


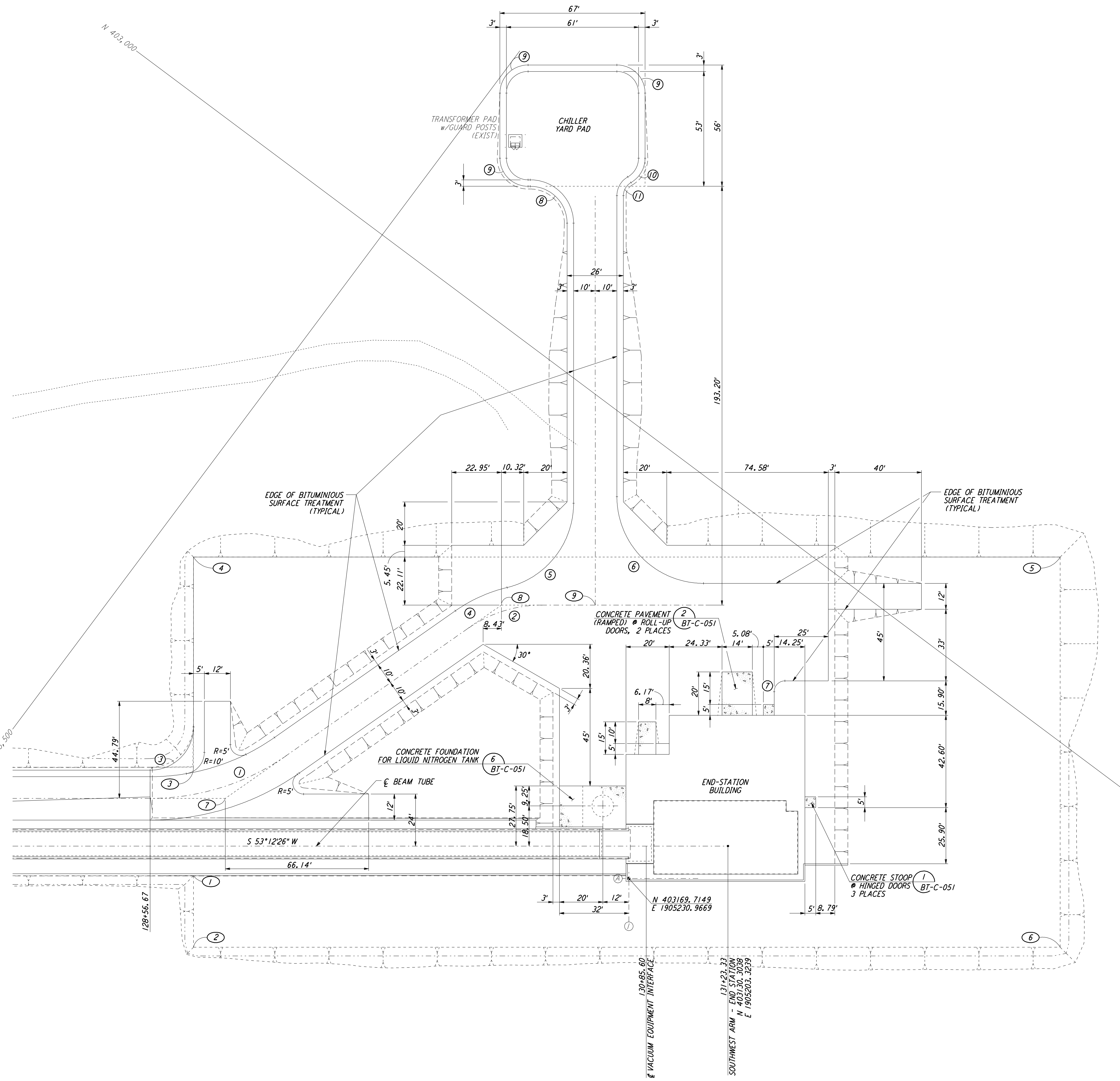
NOTES:
 1. SEE SHEET BT-C-002 FOR GENERAL NOTES, LEGEND AND ABBREVIATIONS.

| CURVE DATA | | | | | |
|------------|-----------|--------|--------|---------|---------------------|
| NO. | Δ | RADIUS | LENGTH | TANGENT | REMARK |
| 1 | 35°00'00" | 110' | 67.19' | 34.68' | ℄ ROAD |
| 2 | 35°00'00" | 60' | 36.65' | 18.92' | ℄ ROAD |
| 3 | 90°00'00" | 20' | 31.42' | 20.00' | EDGE OF PAD (EXIST) |
| 4 | 21°32'41" | 70' | 26.32' | 13.32' | |
| 5 | 76°32'48" | 40' | 53.44' | 31.56' | |
| 6 | 90°00'00" | 40' | 62.83' | 40.00' | |
| 7 | 90°00'00" | 5' | 7.85' | 5.00' | |
| 8 | 90°00'00" | 17' | 26.70' | 17.00' | |
| 9 | 90°00'00" | 13' | 20.42' | 13.00' | |
| 10 | 60°00'00" | 13' | 13.61' | 7.51' | |
| 11 | 60°00'00" | 7' | 7.33' | 4.04' | |

| COORDINATES | | | |
|-------------|-------------|--------------|------------------------|
| NO. | NORTH | EAST | REMARK |
| 1 | 403288.9810 | 1905392.6680 | PI EDGE OF PAD (EXIST) |
| 2 | 403315.4070 | 1905372.9040 | PI EDGE OF PAD (EXIST) |
| 3 | 403248.9398 | 1905422.6147 | PI EDGE OF PAD (EXIST) |
| 4 | 403171.2620 | 1905480.7100 | PI EDGE OF PAD (EXIST) |
| 5 | 402931.6922 | 1905160.3876 | PI EDGE OF PAD (EXIST) |
| 6 | 403075.8373 | 1905052.5815 | PI EDGE OF PAD (EXIST) |
| 7 | 403251.6246 | 1905402.2720 | PI ℄ ROAD |
| 8 | 403103.8631 | 1905353.6693 | PI ℄ ROAD |
| 9 | 403077.9173 | 1905318.9776 | ℄ ROAD INTERSECTION |



LIGO-D960730-A-O



This document and the design it covers are the property of PARSONS. They are loaned only with the borrower's expressed written agreement that they will not be reproduced, copied, loaned, exhibited, or used in any other way, except by written consent from PARSONS to the borrower.

This document and the design it covers are the property of PARSONS. They are loaned only with the borrower's expressed written agreement that they will not be reproduced, copied, loaned, exhibited, or used in any other way, except by written consent from PARSONS to the borrower.

| NO. | DATE | BY | CHKD | ENGR | PROJ | DESCRIPTION |
|-----|---------|-----|------|------|------|--------------------|
| A | 4-19-96 | WRB | | | | CHANGE ORDER NO. 4 |

| | |
|----------|-----|
| DRAWN | WRB |
| CHECKED | |
| ENGINEER | |
| PROJ | |

PARSONS
 100 WEST WALNUT STREET
 PASADENA, CALIFORNIA

LIGO
 CALIFORNIA INSTITUTE OF TECHNOLOGY
 MASSACHUSETTS INSTITUTE OF TECHNOLOGY

LASER INTERFEROMETER
 GRAVITATIONAL-WAVE OBSERVATORY
 BTE SITESWORK & FABRICATION - HANFORD, WA

CIVIL
 SOUTHWEST ARM
 END-STATION
 PLOT PLAN

SCALE: 1" = 20'
 CONTRACT NUMBER: PP150969
 PROJECT NUMBER: 8094
BT-C-045