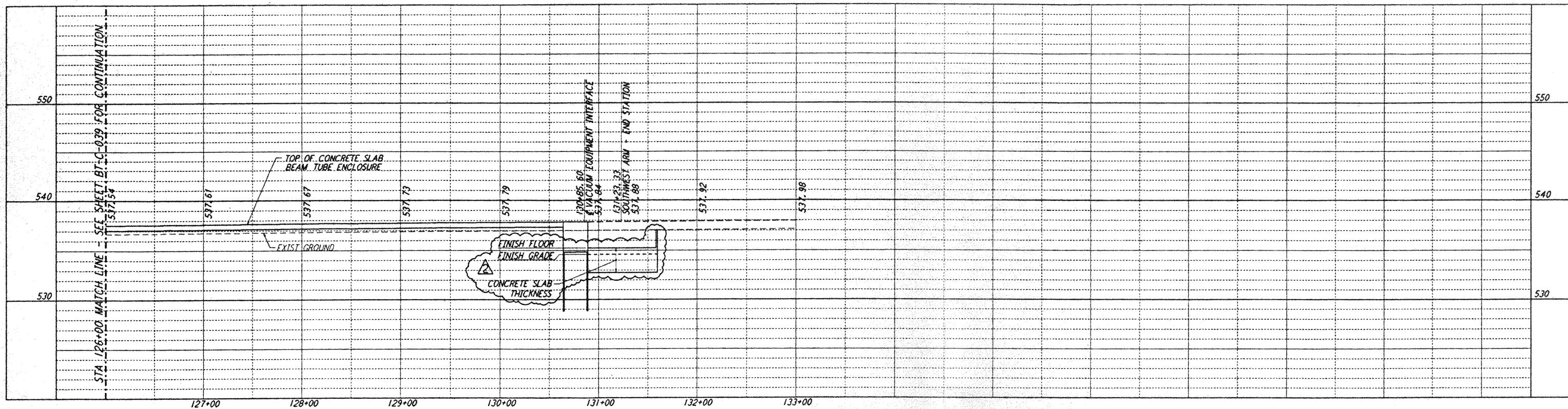
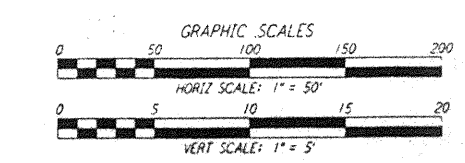
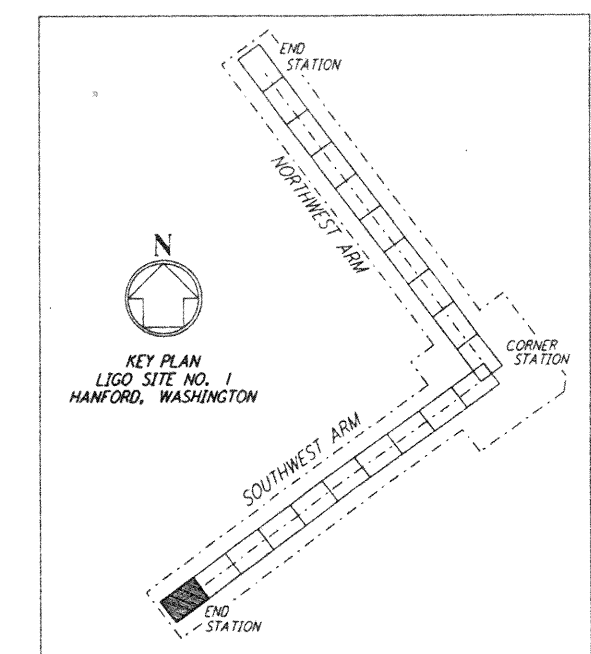
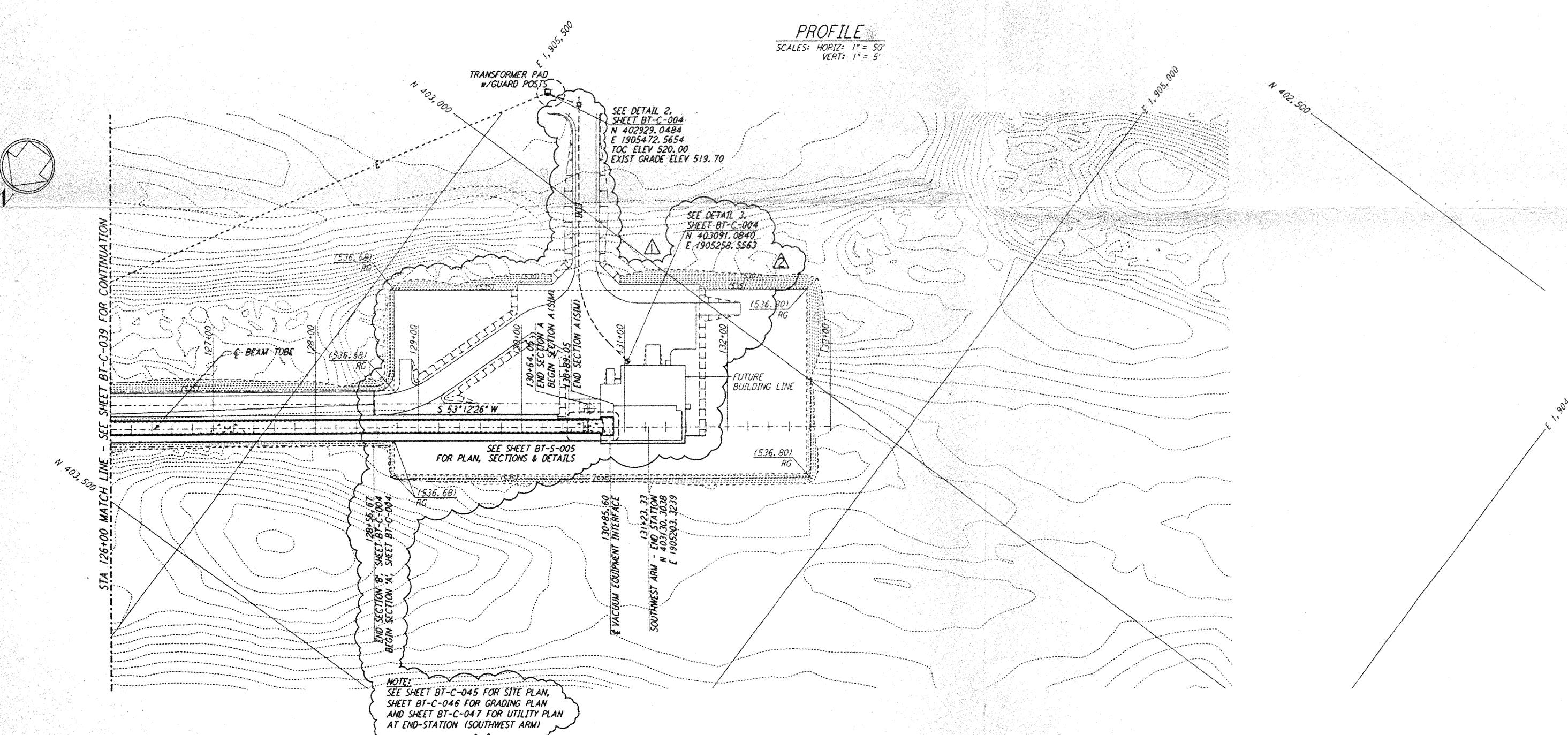


THIS DOCUMENT AND THE DESIGN IT CARRIES ARE THE PROPERTY OF PARSONS. They are loaned only with the borrower's expressed written agreement that they will not be copied, reproduced, copied, reprinted, or used in any other way, except by written consent from PARSONS to the borrower.



- NOTES:**
- SEE SHEET BT-C-002 FOR GENERAL NOTES, LEGEND AND ABBREVIATIONS.
  - SEE SHEET BT-C-004 FOR TYPICAL SECTIONS AND DETAILS.



REFERENCES		REVISIONS		ISSUED FOR CONSTRUCTION						
DRAWING NO.	DESCRIPTION	NO.	DATE	BY	CHKD	ENGR	PROJ	NO.	DATE	DESCRIPTION
		2	4-19-96	WRB	TOM	MDW				CHANGE ORDER NO. 4
		1	2-23-96	WRB	TOM	MDW				CHANGE ORDER NO. 2

DRAWN	WRB	1-19-96
CHECKED	AMP	1-19-96
ENGINEER	JB	1-19-96
PROJ	MDW	1-19-96

**PARSONS**

100 WEST WALNUT STREET  
PASADENA, CALIFORNIA

**LIGO**

CALIFORNIA INSTITUTE OF TECHNOLOGY  
MASSACHUSETTS INSTITUTE OF TECHNOLOGY

LASER INTERFEROMETER  
GRAVITATIONAL-WAVE OBSERVATORY  
BTE SITWORK & FABRICATION - HANFORD, WA

CIVIL  
SOUTHWEST ARM  
PLAN AND PROFILE  
STA 126+00 TO STA 133+00

AS NOTED PPI50969 8094

**BT-C-040**