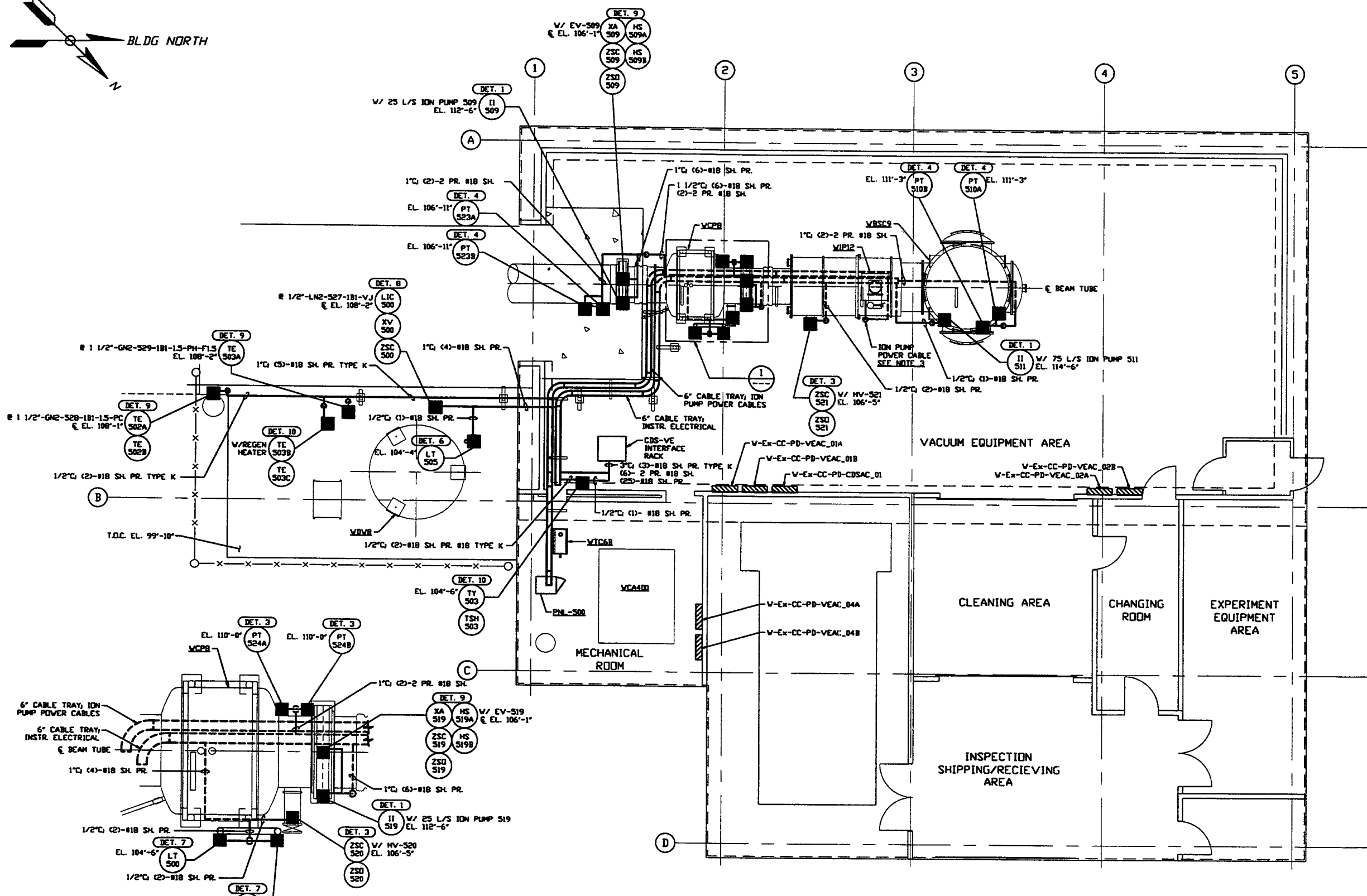
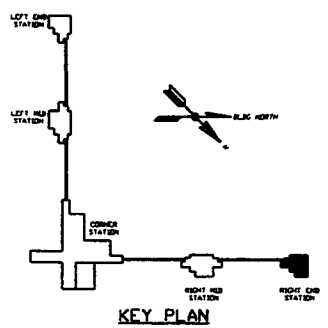


- NOTES:**
- FOR PSI DWG. LIST & LEGEND SEE PSI DWG. 8V049-3-001 SHT. 1
 - FOR LIST OF CIVIL CONTRACTOR REFERENCE DWGS. WITH CURRENT REVISIONS SEE PSI DWG. V049-3-001 SHT. 2
 - FOR INSTRUMENT ELECTRICAL INSTALLATION DETAILS SEE PSI DWG. 8V049-3-007
 - CONDUIT IS SHOWN DIAGRAMMATICALLY AND SHALL BE FIELD VERIFIED SO AS TO OPTIMIZE SUPPORTING MEANS AND TO AVOID INTERFERENCES WITH PIPING SYSTEMS.
 - ION PUMP POWER CABLES SHALL BE RUN IN 2" CABLE CHANNEL FROM ION PUMP DOWN TO 6" CABLE TRAY LOCATED UNDER BEAM TUBE.
 - AT INDOOR INSTALLATIONS, CONDUIT SHALL BE ENT. AT OUTDOOR LOCATIONS, CONDUIT SHALL BE IMC.



RIGHT END STATION PLAN @ EL. 100'-0"

DETAIL 1 REF. THIS SHT.
SCALE: 3/8" = 1' - 0"



PROPRIETARY AND CONFIDENTIAL	V049-3-501	INSTRUMENT PLAN WASHINGTON RIGHT END STATION		
	V049-3-007	INSTRUMENT ELECTRICAL INSTALLATION DETAILS		
	V049-3-002	WASHINGTON OVERALL SITE PLAN		
	V049-3-001	GENERAL NOTES & LEGEND	V049-5-005	EQUIP. ARRANGEMENT WASHINGTON RIGHT END STATION
	V049-0-017	P & I D WASHINGTON RIGHT END STATION	V049-3-508	CDS INTERFACE DIAGRAM
	V049-0-006	P & I D 80K CRYOPUMP	V049-3-507	PNL-500 WIRING DIAGRAM
DWG. NO.	DESCRIPTION	DWG. NO.	DESCRIPTION	

UNLESS OTHERWISE SPECIFIED DIMENSIONS ARE IN INCHES	
TOLERANCES: FRACTIONAL & DECIMAL	
ANGULAR: 30°-36° 30' 00" 1/2	
TWO PLACE DECIMAL & IN THREE PLACE DECIMAL & 3/16 FINISHED SURFACE AND BREAK CORNERS BY REMOVE ALL BURRS	
DO NOT SCALE THIS DRAWING	
USED ON	REV
NEXT ASS'Y.	

2	ISSUE FOR CONSTRUCTION								
1	ISSUE FOR FDR UPDATE & BID	REB	DMCV	FAB	RJV	05.12.97	0480		
0	ISSUE FOR FDR					04.26.96	0129		
REV	DESCRIPTION	CHKD	DRWN	DATE	DEDR				

PROCESS SYSTEMS INTERNATIONAL INC.
20 WALCUP DR. WESTBOROUGH, MASSACHUSETTS 01581 USA

INSTRUMENT ELECTRICAL PLAN
LIGO VACUUM EQUIPMENT
WASHINGTON SITE
RIGHT END STATION

CAD FILE: V0493503
DWG. NO.: V049-3-503
REV: 2

SCALE: 3/16" = 1' - 0"
SHEET: 1 OF 1